



The Swaffham Crier

Volume XLVIII Number 4

April 2024

Editorial



Ultrafast Broadband? Ultraslow so far! Despite the efforts of a great many villagers to find out what has been going on, aside from an increasingly weary looking notice on the Backpath by the Beeches, it has not been at all clear that anything at all has been going on! Read our article (p. 15) where at the very last minute, we found out that something is indeed about to happen (possibly! If it stops raining...)

Welcome to Siddhant Malhotra, who has taken over as the new Heating Scheme Business Development Manager (p. 10) who personally visited us last month and who has included lots of informative tables in his first article. Shades of the past! For many a year, the Heating Scheme was nothing but *tables*, but now at last it's real heat and real money they're telling us about.

Also, an advance welcome to our new Vicar-to-be, Max Osborne (p.7) who you will see has a very impressive track-record. He and his wife Angie who are both from the Health Service - Angie still working as a Practice Nurse - will be joining us in the Summer. Apparently, Max's special interest is listening to Opera and Angie's special interest is staying as far out of range as possible - we look forward to meeting them!

Aaargh! The Hustings are approaching and it may be our MP Lucy has started hers in advance (Our Reporter, p. 6) with a communication every month since Christmas, but she can't compete with rival candidate Charlotte Cane on that score. As our District Councillor, Charlotte has been bombarding us with useful advice and information, both in these pages (Letters, p. 20, p. 28) and personally by email and phone when we ask for more years than we can remember.

SID is back (see Letters) but didn't catch anybody speeding, don't forget the VILLAGE FEAST (p. 9, 19th May), have a great Easter Week and see you Quizzing!

Caroline Matheson

Cover Picture: Wicken Fen Wind Pump, watercolour by **Mike Barker**

Regulars

Letters	2
Cover Picture	2
Bon Mot	3
Our Reporter	4
Heating Scheme	12
Julie's Recipes	14
Book club	15
WI	16
Mothers' Union	18
Village Gardeners	19
CLRs Cane & Trapp	20
Bottisham Patients	21
CROSSWORD	22
PC Notes	24
Anglesey Abbey & Wicken	
Fen News	26
Freecycle	27
County Council Report	28
New Buses	29
VH News	30
Church Services	31

News, Views & Reviews

Hustings	3
International Women's Day	
Football	6
Our New Vicar	7
Ultrafast Broadband	10

What's On

Quiz Night	5
Reach Fair	8
Village Feast	9
Serenata Sings	11
Newmarket Cinema	11
Iolanthe	25

Wanted

Bria-a-brac	8
-------------	---



Letters to the Editors



Dear Editors,

On the Buses

The Combined Authority Board noted the attached appendix today. You will see it includes the proposals from the AtoB1102 Group for the route from Newmarket to Addenbrookes via Bottisham - thus re-linking our villages, including Bottisham. This is not the final decision, but it is an important step in the right direction. You will also see the proposal for a loop from Newmarket Road P&R, which could be helpful locally.

I have generally had positive feedback on the AtoB1102 proposal, although there has been some concern from Reach that they could lose the direct bus to Cambridge and from Lode that the bus to Bottisham will not go through Lode village, just the crossroads. I have fed this back to officers with the suggestion that each route should alternate between Reach and Lode (as the current No 11 does) so that both villages get the option to use each route.

Charlotte Cane

Councillor for Bottisham Ward

(Bottisham, Brinkley, Lode, Reach, Swaffham Bulbeck, Swaffham Prior and Westley Waterless)

See page 29 for the proposed new routes. Eds

Dear Editors,

Rewilding

Just a quick update on the village 'rewilding'

The CLT have successfully applied for a grant from East Cambs District Council (see below) and the Garden Team from The Prospects Trust will be out and about this spring planting bulbs 'in the green' and wildflower seeds on the verges and open spaces in the village managed by the Parish Council – this is likely to be a light touch for go and if it goes to plan we ought to be able to do more in the Autumn. All with the blessing of the PC.

Mike Barker

This Month's Cover Picture

The wind pump at Wicken Fen Nature Reserve was originally in use on Adventurers' Fen, which lies beyond Burwell. Wind pumps were once a common feature of the fen landscape, keeping the land drained for agriculture. This last surviving wooden wind pump was moved to its current site and restored by the National Trust in 1956.

Mike's work reflects his ecological background and draws on impressionist and modern artistic influences, often taking inspiration from our local landscape. He exhibits with Prior Arts Group and Cambridge Open Studios. Mike's website: www.mikebarkerart.co.uk.

Dear Editors,

The Hustings are Coming Soon

Please find the announcement for a Hustings before the General Election. Please may I request that this announcement is inserted into all months until I know the date of the Election.

Ian Woodroffe

Hustings before the General Election:

**Planning is under way to hold a Hustings in Swaffham Bulbeck
before the General Election.**

Date and Venue to be announced nearer the time.

**Each of the candidates standing in the Election will be invited when selected by
their party.**

**Questions will be collated as from April 2024, any questions can be sent
to ian@goldtraining.co.uk**

Dear Editors,

LATEST REPORT FROM SID

Our Speed Indicator Device (SID) has been in action on Mill Hill and reports:

This was a consolidated vehicle count only as I was placed where vehicles would be turning down onto Cage Hill and slowing traffic anyway, and the A2B1102 group just needed counts.

I was set up facing Burwell, and I can report that over a two week period, the weekday average number of cars was 9261, dropping to 6746 on the weekends.

As you might expect, between 7 - 9 am in the week there were an average of 1031 cars an hour passing the end of Cage Hill.

My full report with data and a pretty graph can be found on the Parish Council website <http://www.swaffham-prior.co.uk/pc/>.

Sid

With a little help from Steve Kent-Phillips. Eds

BON MOT NUMBER 148

***"Men fail in private
long before they fall in public."***

Revd. J.C.Ryle (1816 - 1900)

From our Reporter

All editors hope for a scoop to splash onto their front pages. Our Editors certainly had that in the March Crier. The Mark Lewinski-Grende letter was a bombshell. If David Greenfield had read this at the breakfast table he would have choked over his corn flakes. And no doubt he hot foot it down to Mr Lewinski-Grende to help him out.

March 2024 marks the final edition of The Phone Book. It was first published in 1880 and that is more then 140 years ago. Quite an achievement. You have been advised to hold onto this final edition and save a part of history. Always moving with the times, in 2010 it was resized to fit through letter boxes and thereby saved 2,000 tons of paper each year. Even more tons of paper will now be saved.



The big event in March was the open meeting of Lucy Frazer in the Village Hall. Many will think that she is only coming for the first time because it is Election Year. That is only partially true. In the past she has often offered to come but the PC regularly said "Thanks - but No Thanks." Many in the Village are angry with Lucy because they write to her and find she does not share their views. She is faced with questions - to take an extreme example - such as "Do you agree that your leader is a nitwit." Any politician could be asked that. And the honest answer would/should be "Get stuffed", "You must be joking", "What do you expect me to say". Instead you are likely to get a long attempted reasonable answer cooked up by some ambitious young aide. Because Lucy does not always agree with one's own views/bias we all think she is obviously being devious, dishonest, and wrong. I am as guilty as anyone else over this.

Anyway Lucy is giving herself two days of potential gyp by going to five open meetings in various local constituencies over Friday and Saturday. That is very brave and requires great stamina. She is going to get such a lot of hassle, especially with the Tory Party going a bit bananas at the moment. Unfortunately I couldn't be there. If I had I would have asked her why she had charged the BBC with bias without being able to give any examples of bias. Ofcom has reported some complaints about the BBC. But there are bound to be some complaints from the millions who watch or

listen to the BBC. How can anyone avoid all bias? What a boring world without varied opinions and debate. What is the absolute truth? It is essential we protect and save the BBC

Lucy is giving herself two days of potential gyp by going to five open meetings in various local constituencies over Friday and Saturday.

The complaint about the BBC was taken up by a "policy research bureau" called Public First which says that a "significant minority" is shunning the BBC's news coverage because of its perceived politically correct agenda. These people are turning to GB News! They say that more than half of viewers from "the lower socio-economic demographic" think the BBC News has become "too politically correct/woke." A BBC spokesperson claims that 49% of the

audience to its daily Breakfast programme come from the "lower socio-economic demographic". Who are these people? Do you know many? Are you one?

Samir Shah, the new Chairman of the BBC has thrown a little light on it. He has committed the BBC to attract working-class viewers back by reflecting "class and thought in all its diversity." Ah! Is the "lower social-economic demographic" the "working-class"? I thought we had given that up years ago. In any case with so many companies involved no single one can corner the total TV market. It is a ridiculous request.

When Michael Gove has tidied up "extremism" he can perhaps have a go at the "working-class" and the "lower social-economic demographic".

At the same time as Lucy's letter from the House of Commons came the wonderfully stylish press release from Charlotte Cane. It was terrific. That is until you read some of the "priorities". How are the Liberals going to solve the NHS problems so easily? It is hugely complex. For a start will they give the junior doctors what they want and end the strikes? Will she also support some of Wes Streeting's recent proposals. Or clear up the NHS total IT shambles by adopting the system in Estonia - or at least take a look at it. Estonia is considered to be the world's most digitally advanced nation.

Briefly returning to Lucy I would also have asked whether she thinks she is a better Secretary of State for Culture than her predecessor, the mass selling novelist Nadine Dorries, And if so, why? Also, does she support the Arts Council's assault on "elitist" values in the arts. Has she read one of Nadine's novels?

Talking of novels, on the eve of the International Women's Day I had just finished Stella Gibbons Cold Comfort Farm. What a tribute the book is to the wonder that is woman. The world should be so grateful. And the book makes one feel so young and hopeful.

Alastair Everitt

QUIZ NIGHT

Swaffham Prior Village Hall

7.30 pm Saturday 13 April

Tickets £7 each. To book a table, contact



Jenny Brand
(01638) 742161

or

Lynne Rand
(01638) 741960



Jacket Potato Supper

Bring your own drinks and glasses !!

Proceeds in aid of St. Mary's Church, Swaffham Prior

International Woman's Day Bottisham Village College Football Festival

On International Women's Day (8 March), I had the pleasure of supporting a huge celebration of women, girls and football, hosted by Forest Heath Sports Partnership and Bottisham Village College.

The event took the form of an inter-school football skills festival, where girls from Swaffham Prior Primary School, Swaffham Bulbeck Primary School, Bottisham Primary School, Ditton Lodge Primary School and Great Wilbraham Primary School were invited to join female sports leaders from Bottisham Village College for creative outdoor sessions as part of the Barclays 'Game On' programme.

Also present at the event were representatives from Cambridgeshire Football Association and the Youth Sports Trust – a charity which seeks to improve young people's education and development through the delivery of sport programmes.

In the wake of the Lionesses' successes, I had plenty of examples with which to encourage the girls, and they responded by performing with an exemplary attitude and some impressive skills!

Lucy Frazer KC MP

Member of Parliament for South East Cambridgeshire



THE ANGLESEY BENEFICE

Introducing our New Vicar

The Rev'd Max Osborne



During the Summer we are looking forward to welcoming our new Vicar Rev'd Malcolm Eric (Max) Osborne. Here is a little about his history for your information.

Prior to ordination Max's background was in Mental Health working at an Acute Admissions Unit in Norfolk as part of a multi-disciplinary Mental Health Team. After offering for Ministry in the Diocese of Norwich, Max attended St John's College of Divinity, Nottingham where he first met Revd Roger Bowen as his Missions Tutor. On leaving Theological College, he was ordained in the Diocese of St Edmundsbury & Ipswich where he served as Assistant Curate in Felixstowe, then half-time Adviser for Social Responsibility and Minister-in-Charge of a community church in Ipswich. He was appointed Vicar of All Saints Newmarket in 2002 where he served for nineteen years. Max and Angie enjoyed Newmarket as a place to settle and for their children (David and Jess) to grow up. It was during that time that Max was invited to become a Training Vicar, elected to the Church of England's General Synod, Bishop's Council member, Assistant Diocesan Director of Ordinands and a member of the national Bishop's Advisory Panels selecting clergy for the Church of England. Max was also Newmarket & District British Legion Padre, Chaplain to Newmarket Town Football Club and, for two years, Rural Dean of Mildenhall. Angie works as a Practice Nurse in a nearby surgery, Jess is a Staff Nurse at Royal Papworth (Addenbrookes), and David is a lorry driver. They have a grandson, Noah (8yrs) who lives at home with them. Max and Angie are delighted to be moving to Bottisham and joining the Anglesey Group of Churches: "In some ways it feels like 'coming home.' It is such a lovely area to live and work, and we have so many friends in the area". Max and Angie enjoy walking, and spending time with family. Max's special interest is listening to Opera and Angie's special interest is staying as far out of range as possible!



Rev Max Osborne, receiving a British Legion standard in 2022 at St Leonard's Church, near Bury St Edmunds

Dee Noyes



Monday 6 May 2024

12 noon to 5pm

**Fairground, Village Fair, Maypole Dancing,
Morris Men, Craft Stalls, Live Entertainment and more**

**Entrance Free. Parking £10 per vehicle;
£5 Blue Badge Holders and motorbikes.**

**www.reachfair.org.uk
Fair Green, Reach CB25 0JD**

Bric-a-brac donations wanted! Calling all Springcleaners!

St Mary's Church, Swaffham Prior, is running a bric-a-brac stall at the Swaffham Prior Village
Feast on Saturday 18th May 2024

We are currently collecting donations for the stall – small, clean, preloved items in good
condition.

If you have any items to donate, please get in touch with Kate Muscroft (07752011308/
katemuscroft@gmail.com) and she will happily collect your items within the Swaffham Prior
area.



ANNUAL VILLAGE FEAST

• SWAFFHAM PRIOR VILLAGE HALL

SATURDAY 18TH MAY 12.30PM - 4.00PM



EVENTS - STALLS - BAR & REFRESHMENTS

PUNCH & JUDY— CIRCUS SKILLS — FALCONRY DISPLAY

• MAYPOLE — CAR & MOTORCYCLE EXHIBITION •

BARBEQUE - RAFFLE - MUSIC

BRIC-A-BRAC - PLANTS - ICE CREAMS - GURNING - LUCKY DIP
BOWLING - WI STALL - TOMBOLA - FOOTBALL - CAKES - BOOKS
• JIGSAWS & TOYS, CAN SHY, CREAM TEAS - FACE PAINTING •

ANNUAL EGG-THROWING CONTEST AT 4.00PM



COME AND RELAX IN THE PUB GARDEN AND ENJOY
A HOG ROAST FROM 5PM AND LIVE DUO
FROM 5.30PM TO 8.00PM

Broadband coming to Swaffham Prior UltraFast but Slowly?

I was wondered about making this an April Fool's article saying that everyone in the village would have ultrafast broadband by the time the May Crier comes out but that's maybe too much for anyone to believe. But things are actually looking up a fair bit in these last 24 hours before the copy goes to the Print Centre tomorrow: I've managed to establish contact with GigaClear, one of the companies mentioned in previous Crier articles, and to sign up for their "online community drop-in" session this morning. We'll carry a report on that next time.

Community Engagement Manager for GigaClear's build, Roisin McGettigan, said "we are excited to extend our network to Swaffham Prior and although our plans do still currently include the village, some-

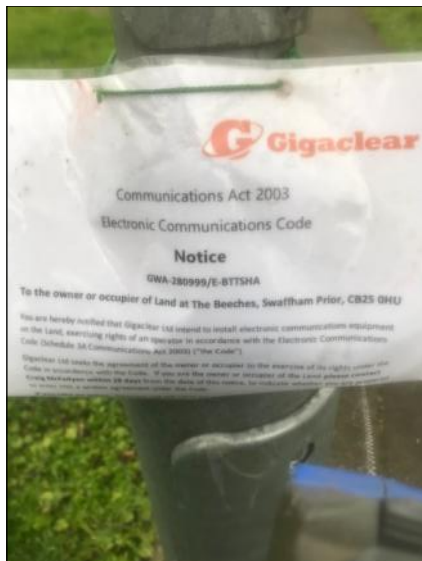
Although our plans do still currently include the village, sometimes there are extenuating circumstances...

times there are extenuating circumstances that means we do not get to you as quickly as we would have liked. We are connecting customers in surrounding villages and are hopeful that you will see gangs from our contract partners in the late summer". The extenuating circumstances to which she refers are that their projects in Bottisham and Swaffham Bulbeck have been held up by abnormal amounts of rain in the last few months, and a lot of emergency works, such as water, round here since Christmas.

GigaClear are aware of rumours of other potential suppliers having an active interest in Swaffham Prior but they haven't come across any evidence of any enabling works other than their own taking place round here. Back in October, in the Crier's last article on Broadband, County Broadband appeared to be on track to fulfil their estimate of delivering by around now but the complete lack of communication from them since then looks to rule this out. We have attempted to contact them for an update for this article but we have not received any reply other than an auto-acknowledgement of our query sent over a week ago.

James Matheson

Stop-press: It looks like GigaClear's installation schedule for us will be very similar to that for Swaffham Bulbeck, i.e. 80% complete by the end of the summer.



'Why We Sing' - A celebration of Song

Serenata sings at St Mary's Swaffham Prior

on Sunday April 14th at 4.00 pm

**Adults £15.00, Children £5, Family ticket £32 on the door or in advance
from 01223 892001**

Come and hear us sing in this lovely church!



Newmarket Cinema

Please find below details of our film shows for January - March 2024 at The Stable, High Street, Newmarket. NB. we are still only having a showing on Monday.

April 15th - The Unlikely Pilgrimage of Harold Fry (12A)

May 20th - Easy Virtue (2008) (PG)

June 17th - The Great Escaper (12A)

Doors open at 6.30pm with the film starting at 7.30pm. Admission is £6 which includes free refreshments. If you would like to reserve seats, please ring 07756 853714.

Richard Penney

Competition to design artwork for new waste lorries

Young people across East Cambridgeshire are being given the opportunity to design artwork for our new fleet of waste and recycling lorries. Nine designs will be shortlisted and transformed into artwork which will be pasted onto the sides of the nine lorries. Run by ECDC, the competition is open to all under-18s and the deadline is May 3rd. Email comms@eastcambs.gov.uk for more details.





A Message from Siddhant Malhotra

Energy Business Development Manager

It brings me great excitement to introduce myself as the new Business Development Manager for the Swaffham Prior Heat Network project. This revolutionary initiative is paving the way for sustainable village living, and I feel privileged to play a part in its continued expansion.

My role is to actively engage with residents, address enquiries and ensure a smooth process for those looking to transition their homes to eco-friendly heating and hot water. I am here as a dedicated resource to support you through each step of connecting to our renewable energy network.

Please feel free to reach out to me directly with any questions. I am happy to set up virtual meetings or arrange in-person consultations to review your specific needs. I am absolutely committed to supporting you and making this process as easy as possible. Energy sustainability is a team effort, and I cannot wait to collaborate with all of you as we forge ahead toward a cleaner, greener future for Swaffham Prior and set an example for other communities.

Siddhant Malhotra

Energy Business Development Manager

Siddhant.malhotra@cambridgeshire.gov.uk

Mob: +44 7393146945

Your Feedback Powers Our Progress

In March, we sent out customer satisfaction surveys to all existing heat network customers. If you have not yet completed yours, please take a few moments to provide this valuable feedback. Your input regarding the experience you have had with the heat network is extremely important to us. It allows us to identify areas of strength and opportunities for improvement as we connect more homes to the system. For prospective new customers, these surveys also offer transparency into the quality of service you can expect. We are committed to continuously improving our customer experience with the heat network, and your responses will directly guide our efforts. Please submit your completed survey at your earliest convenience. Together, we can optimize sustainable heating for Swaffham Prior!

What Are Existing Customers Paying?

As interest grows in joining the heat network, we wanted to highlight what existing customers are paying. The table opposite shows the average variable charges paid by current customers over the last 6 months from July-December 2023, categorized by property size bandings.

For the new tariffs from January 2024, please visit our website on <https://www.cambridgeshire.gov.uk/swaffhampriorheatnetwork>

Delivering Reliable Heat

Our Energy Centre consistently maintains output temperatures to the heat network that allow for optimal warmth in connected homes. The chart opposite shows actual supply temperatures for the month of February where we maintained the tempera-

Month	Band 1 (50 - 99 Sq. m)	Band 2 (100 - 149 Sq. m)	Band 3 (150 - 199 Sq. m)	Band 4 (199+ Sq. m)
July	£12.14	£20.30	£29.74	£29.51
August	£13.52	£19.48	£32.04	£29.41
September	£16.90	£21.28	£32.94	£25.58
October	£52.70	£68.46	£69.03	£96.32
November	£103.85	£150.37	£170.18	£220.22
December	£110.68	£177.53	£199.26	£256.01
6 Months Average	£51.63	£76.24	£88.87	£109.51

Note: 5% VAT Additional

Band	Band Size	Standing Charge Per Day	Per Year
1	50 - 99 Sq. m	£0.75 + 5% VAT	£289 (275+5%VAT)
2	100 - 149 Sq. m	£0.94 + 5% VAT	£359 (342 + 5% VAT)
3	150 - 199 Sq. m	£1.13 + 5% VAT	£435 (414 + 5% VAT)
4	199 + Sq. m	£1.33 + 5% VAT	£511 (487 + 5% VAT)

tures of 72 Degrees and higher, demonstrating our commitment to effective service.

How to Get Connected

Don't miss out on this free connection opportunity to save on your upfront connection expenses! Contact us today to take advantage of connecting to the heat network. Joining the heat network is easy!

Simply register interest through our online form

<https://forms.office.com/e/8mg3xtEpnY> scanning the QR code

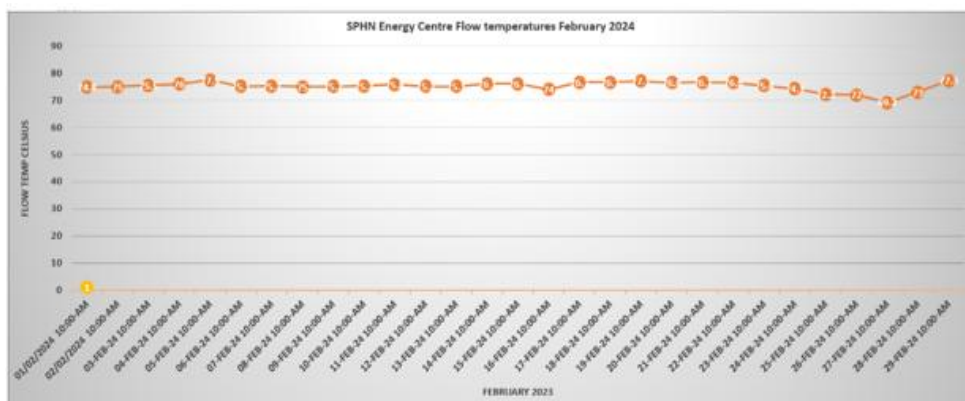
which will direct you to the link, Email us at

heatingswaffhamprior@cambridgeshire.gov.uk, or

Call our customer service line at 0345 0455210

We will then guide you through the process of booking a home survey and establishing your connection timeline.

The path to sustainable village heating is here. I encourage you to get in touch to start your renewable energy journey today!



Julie's Spanish recipes

(Julie has just returned from a holiday in Spain...)

Valencian Paella

500g chicken chunks
500g rabbit chunks or sliced chorizo
60ml extra virgin oil
1 ripe tomato
200g green beans
200g lima beans
500g Bomba rice
1.5 litres of chicken stock
Sprig of fresh rosemary
Chopped flat leaf parsley
Saffron
Salt
10 pre-boiled snails (optional)

Heat the oil in a large Paella dish and add the chicken, rabbit or chorizo, saute it over a low heat until the meat is sealed and golden.

Next add the tomatoes, peeled and chopped, the lima and green beans, maintaining the same heat.

Once everything is well fried, add the stock, a sprig of rosemary and retain the heat. Just when it begins to boil, add the rice, the snails, salt and saffron and remove the rosemary.

When the rice has cooked for 10 mins, decrease the heat gradually and cook for a further 10 minutes.

Once the paella is done and the liquid has evaporated, let it stand for a couple of minutes to let it form a light crusty bottom.

Finally sprinkle with chopped parsley and serve with a wedge of lemon.

Serves 4

Spanish tortilla

1 large white onion, sliced
4 tbsp olive oil
25g butter
400g waxy potatoes, peeled, quartered and finely sliced
2 garlic cloves
8 eggs, beaten
Handful flat leaf parsley
Salt and pepper

1. In a large non stick frying pan, slowly cook the onion in the oil and butter until soft, add the potatoes to the pan and cover and cook for 15 mins until they are also soft. Add 2 crushed garlic cloves and stir in, followed by the beaten eggs and seasoning.

2. Put the lid back on and cover and cook for 15-20 minutes, until the edges and base are golden, the top set, but the middle still a bit wobbly. To turn it over, slide it onto a plate and put another plate on top to turn and return to pan to finish cooking.

Cut into portions and serve with chopped parsley

Serves 4



Here's Julie about to partake of the real McCoy in Spain. We're relieved the pre-boiled snails are only optional in her English version....

The Reading Group Read...

Demon Copperhead

by Barbara Kingsolver

...And you'll hear all about it when our correspondent gets back next month! This month's book is *Still Life* by Sarah Winman, 6pm, Wednesday, April 3rd at the Hollingsworth's, Lower End.

Caroline Matheson



The Swaffhams' WI

Where has the last year gone? It only seems like yesterday since our last AGM but the March meeting of the Swaffhams' WI brought with it once again our 2023/2024 AGM celebrating all of our amazing speakers and exciting events from the last 12 months. Below is a précis of the report given by our wonderful secretary, Hilary, summing up the year's events:

Clare Kenward...had some particularly stunning caramel-coloured roses with her, particularly popular with brides!

We started in April with a visit from Gabriel and his two assistants from the East Anglian Air Ambulance, who gave us a clear and hands on demonstration of compressions for cardiac arrest and the use of the defibrillator. This was followed in May with an excellent talk on William Morris by Fiona Rose. During May we also had a Treasure hunt stall at the Swaffham Prior Feast thanks to Shirley and volunteers and prepared jars for our stall in June at Swaffham Bulbeck, which was also a great success. June saw our annual Garden Party at Rose Cottage, where the weather was perfect and the food delicious. This month also saw the Group Meeting in Burwell where we stole the show with our tableau from Les Miserables thanks to Kaye and her marvellous choreography. July saw a competitive evening of bingo followed in August by a very well attended visit to Snakehall Farm. September saw a visit from Clare Kenward with her flower arrangements. She gave us some great tips about conditioning and presenting flowers, and had some particularly stunning caramel-coloured roses with her, currently popular with brides! October's speaker was Helen Ackroyd from Anglesey Abbey who gave us a



wonderful description of the house, its history and the Fairhaven family. In November we were visited by Ellie from Arthur Rank Hospice who gave us an excellent overview of the services and atmosphere at what is obviously a wonderful environment for the patients, family and staff. The Christmas party followed in December with games and another delicious buffet. Our very own Dr Giles Yeo richly entertained us in January with an overview of his genetic research on obesity at the Cambridge



Biomedical Campus, including a visual aid of a knitted digestive tract including yards of intestines! This was followed in February, again with a speaker who lives in Swaffham Prior, by Julian Luttrell on family history.

Throughout the year there have been so many people working hard to make the Swaffhams' WI such a great success. Members of the WI take turns to provide the delicious refreshments at each meeting, the book stall is organised by Judi and Jean has always provided an excellent raffle. Jutta keeps us up to date with helping to celebrate the birthdays. Thank you to everyone for your continued support. Jean has now handed over the reins of the raffle to Shirley – thank you so much Shirley for taking this on.

In March 2019 Margaret took over officially as president of the Swaffhams' WI and we are sad to see Margaret retire from her post this year and thank her for all of her hard work (and the beautiful posy of flowers she brings to each meeting). We are however delighted that Margaret is staying on the committee and will be helping to organise our future speakers and events. Our highly efficient treasurer, Lynda, is also stepping down from her post and huge thanks goes to Lynda for her efficiency with the books. Once again we are thrilled that Lynda is staying on the committee. We warmly welcome Lesley as our new treasurer. Hilary remains as our super-efficient secretary and Gill continues to organise superbly the rota for the refreshments. Kaye and I will be sharing the role of president and we are excited about following in Margaret's footsteps with the support of such an excellent committee!

Our next meeting is on Monday 15th April 2024 at 7:30pm in Swaffham Prior Village Hall. Our April talk is on 'Growing up rural' and as always there will be refreshments including delicious cakes! We would love to welcome new members and visitors – do please come along in April to get a feel for what we are about.

Kate Muscroft



Mothers' Union

In February, our guest speaker Liz Butler, gave a talk, with PowerPoint photographs on the Christian Mission trip her and husband Alun made to India in November 2009. Liz described the mission as both challenging and encouraging, in a country with lots of bugs, very foreign and extremely hot. There were four other companions in the mission group. A good friend of Liz's daughter, her mother and two ladies from the Netherlands. The month-long mission was to the GEMS (Gospel Echoing Mission Society) compound in Dehri, Bihar in northern India.

Liz explained how horrendous, and nerve-racking travelling conditions were as they made their way from Delhi airport to Dehri, by taxi and train. Very little English is spoken, and their train compartment shared with an Indian family was very basic. Parts of which were covered in nasty looking black bugs. The journey took over nine hours and with no signs on the train stations, to Liz's relief an English-speaking man came to their rescue and let them know when the train arrived in Dehri. Although,

The main income in the area is from prostitution, involving children from the age of nine.

the kind man was rather perplexed as to why Liz and Alun were visiting one of the poorest and lawless areas in India. In 1970 Rev. D. Augustine Jebakumar felt a specific call from God, and began setting up the compound in Bihar in October 1972. The activities of this Society are primarily church planting and evangelism. Later educational services, medical services with hospitals for cataract operations and the victims of Polio and social services were added in order to cater to the needs of people. There were

30,000 children in GEMS schools in 2009. Giving educational skills for independence in adult life, and appropriate learning for children who have disfigurement having suffered Polio. The main income in the area is from prostitution, involving children from the age of nine. In 2009 there was a hostel of safety for 115 children and for many more today. A third of children are HIV positive, and those cared for and taught within the GEMS compound finding the deep experience of Jesus Christ share this with their mothers. Pupils from GEMS schools connect with children in surrounding villages perhaps once a week, as there are so many children who lose their parents and have so very little to sustain them. There are fee paying schools which help finance the GEMS Missionary schools. During their time at the Mission, Liz and Alun did some English teaching, helped with crafts, games and told Bible stories. They were amazed by the enthusiasm the pupils had to learn especially the highly disfigured Polio sufferers who could only crawl on their disfigured limbs. One little boy wanted to show Liz and Alun his treasures, which were meagre pieces of paper and pencils, but they meant the world to that little boy!

Everything revolved around the church, and a typical day began with a very loud 6am worship service. Which Liz found quite disturbing especially if she had suffered a bad night having become the victim of mosquito bites and feeling

uncomfortable. Unfortunately, due to the style of beds there was nowhere for mosquito nets. The Sunday church service lasted for four hours. Men and women sat separately crossed legged on the floor. Some of the service was in English for the benefit of Liz, Alun and their fellow mission companions. Liz reflected that prayer permeates everything they do, and it was so encouraging how powerful the gospel is there. When the time came for Liz and Alun to leave it was the festival of Diwali, and as they left Dehri there was one church with a golden cross lit up. This being the church Augustine first built when setting up the compound. Liz found GEMS both inspiring and heartbreaking, an experience that changed her life.

Our meetings usually take place on the third Thursday of each month at 2.30pm in Fassage Hall, Lode. On Thursday 18th April, our guest speaker will be Angie Stewart – CEO, Cambridge Women’s Aid. You are most welcome to join us.

Ann Langran



THE VILLAGE GARDENERS

At our March meeting of the Village Gardeners, we had an expert talk on ‘How to Grow Your Own Fruit & Vegetables’ by Peter Jackson. Peter is a local, horticultural guru having worked for 50 years for Scotsdale Garden Centre. Over the years, the average size of a domestic garden has shrunk considerably, but plant research & development has provided us with fruit & vegetables that will happily grow in reduced spaces. When choosing the fruit & vegetables to grow ourselves, Peter’s take-home messages were 1. Grow fruit & vegetables that you like and use regularly; 2. Grow some rarer varieties that you like but can’t buy in the shops, but which will grow well in your garden; 3. For ease, don’t be afraid to start with small plants rather than sowing seeds; and 4. Choose varieties that work for you. - the options here are endless; dwarf plants to fit small spaces & for easier harvesting; plants for patio pots, hanging baskets & raised beds; disease and drought resistant plants; thorn-less plants and so on.

Peter gave us some handy growing tips: for fruit & vegetables grown in pots, preferably use a soil-based compost rather than general potting compost - it has more substance and won’t dry out so easily. Less watering means that fewer nutrients are washed away. Grow plants that dislike our local, alkaline soil conditions in pots in an acidic, ericaceous potting compost and water using rain water only, not tap water. Chalky soil is likely to be deficient in magnesium, so consider using an appropriate supplemental feed. Finally, to reduce pest and disease problems, apply annual crop-rotation if you have space to do so.

The next meeting of the Village Gardeners will be held on Tuesday 16th April at 8 to 9.30pm (doors 7.45pm) in Swaffham Prior Village Hall, when Dr Gwenda Kyd will be giving a talk on ‘Incredible Edible (and drinkable) Plants’. Gwenda’s talk will explore our use of plants as a source of food and flavour, including their benefits, nutritional and medical value. Attendance is free for members or £4 for visitors, and tea, coffee and homemade cakes will be available to purchase after the talk. We hope that you can join us.

Fiona Geraghty

Happy Easter!

Your bins will be collected a day later than normal in the first week of April because of Easter Bank Holidays. They will also be collected a day later than normal in the first and last full weeks of May.

The Administration's budget, including spending £9 million of Community Infrastructure Levy money on the crematorium at Mepal, was approved by a majority.

We supported an amendment which would have: removed all budget lines relating to the crematorium, returning millions of pounds to be spent on projects in local communities; added the costs to establish Civil Parking Enforcement in the district, paid for mostly from reserves; doubled the Council's Environment fund to increase the council's activity on decarbonisation and biodiversity; added an officer to support local communities making grant applications, and a sum for matched funding for bids.

This would have been funded from savings in staff costs from posts that are left vacant during the year. But the amendment was lost. Both the motion and the amendment proposed a council tax freeze.

Council unanimously accepted changes in Councillor allowances put forward by the Independent Remuneration Panel. These included an increase in costs claimable by Councillors to cover their caring responsibilities when attending Council duties. This should help make Councillors more representative of the residents of the district. The proposals also include an increase in allowances for Planning Committee members, who meet more frequently and for longer than other Councillors.

Council approved a further £200,000 fee to ECSS for 2023/24, because they are overspending again although still not delivering the agreed level of service. We tried to get an external review of ECSS financial management and governance because this is the second year in a row that they have asked for large sums of extra money just before the year end. But the Administration voted against that. The fee for 2024/25 was increased by 26%, part of this was claimed to be for the extra costs of using HVO fuel, although this had already been included in the fee for 2023/24.

The Council also, with a majority rather than unanimously, agreed changes to



its constitution. We opposed these on the grounds that while there were some sensible and welcome changes, some of the proposals were not acceptable. In particular, we wanted to establish an Audit Committee capable of functioning effectively and doing its job, which the agreed changes do not; and we wanted to establish an additional policy committee to tackle the weighty planning and environmental challenges facing East Cambridgeshire. These will instead be moved into the Council's Finance & Assets Committee, which has enough significant business already.

Some agencies are not always accessible for residents to request foodbank Vouchers. But the Housing & Community Advice team at ECDC can issue food bank vouchers to ALL residents within East Cambs. Residents do not need to come into the offices, they can contact the team on 01353 665555 and the code can be issued by phone, text or email.

Our next Councillors' surgery is on Wednesday 24 April in the small meeting room at the Bottisham Sports & Social Club.

News from Bottisham Medical Practice Patients' Participation Group

AGM: This will take place in the Surgery Waiting Room at 6.30pm on Thursday 18th April. Please join us to hear Dr Shackleton speak about "Changes in GP Practices".

Social Prescriber: We now have a lady in post, Maria Reynolds. You can book an appointment through reception. Social prescribers can help with applications for "blue badges", advice on how to arrange some home help and carers, signpost you to support agencies you may not be aware of and be a useful point of contact if you are struggling with any aspect of life which doesn't specifically need a GP to help with.

Physiotherapists: We have 2 physiotherapists in post you have appointments on Monday and Wednesday. They are highly skilled and usually have less than one week wait for an appointment.

The Patient Participation Group: We are happy to have new members to join the committee, all patients of this Practice are eligible. Please contact our chairman as below to find out more information and how you can be involved

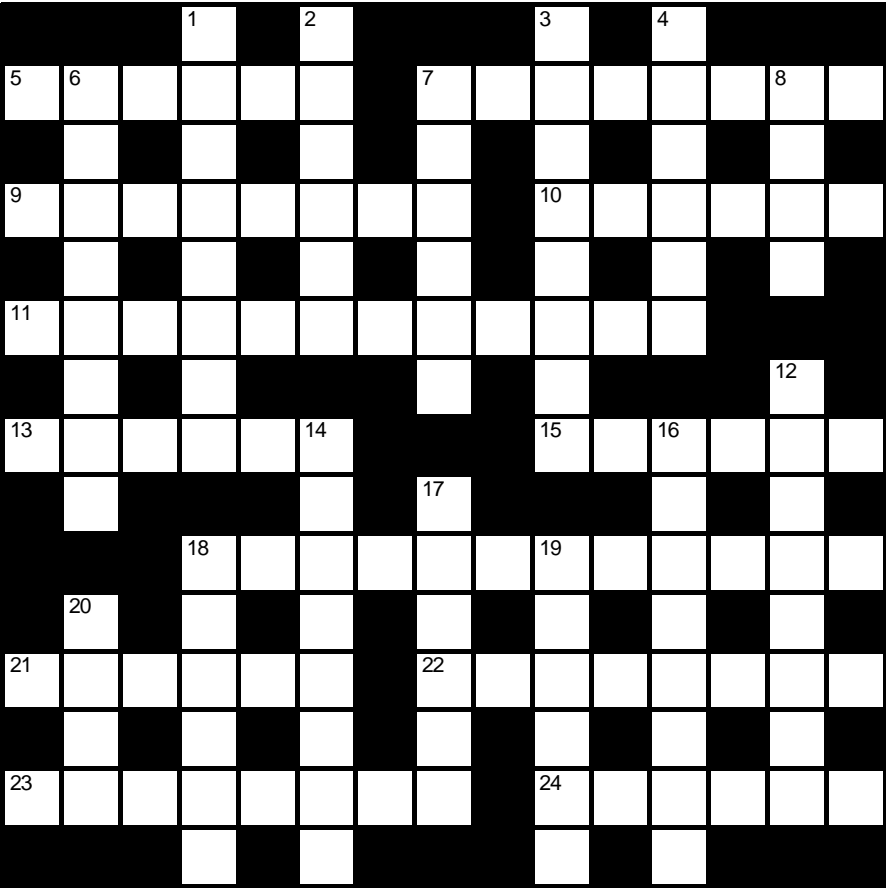
Next Meeting: Is the AGM as above and next regular meeting will be at 6.30pm Thursday June 27 in the Surgery waiting room. If you wish to join our meetings, please email our chairman s.j.gilson@btinternet.com. Or speak to reception.

Bottisham Medical Practice Patients Participation Group

Crossword Number 215

Compiled by **CALVIN**

This month’s puzzle is a simple cryptic crossword. Send your answers to the editors by 18th April 2024. The sender of the first correct solution out of the hat will win a free Sunday Lunch at *The Red Lion*—See the pub manager for full details. Emailed solutions are acceptable but please include “CROSSWORD” and the crossword number in the header.



Name:.....

Address:.....

.....Tel:.....

Across

- 5 Woman holds rubbish figurine (6)
- 7 Short animal with mice running about might lead to global plague? (8)
- 9 Playing piece finally captured by popular realm (8)
- 10 Scares a red kite by holding inverted rubber (6)
- 11 One of the Beatles, with detector kit I smashed (6,2,4)
- 13 Tom, perhaps, to bite herb (6)
- 15 Home for insects - camp even, disarray oddly missing (6)
- 18 Those who come after missing men, followed by Conservative victor (7,5)
- 21 Cost initially depends on a wizard (6)
- 22 Fit hospital department for American rat (8)
- 23 Uneasy and unsettled, stress about the French (8)
- 24 10 and 20 needing water, having lost the start of something (6)

Down

- 1 Distaught due to prank with drug in tin (8)
- 2 Express to remove native Scots? (6)
- 3 Heavenly area for crystalising plant (8)
- 4 Holding back, get a reason to supply with oxygen (6)
- 6 Current flows around river, hot and humid (8)

- 7 Flag that peasant is grasping a couple of points (6)
- 8 A couple's thing? (4)
- 12 Nosy, after riper nut flourished (8)
- 14 Mining tool with reel, adapted for fish (8)
- 16 Mingle - not during school holidays - with number 9 (8)
- 17 EU sign off on intellectual (6)
- 18 Gutless, silently holding tongue in secret, barely (6)
- 19 Vault empty, thereby achieving security (6)
- 20 Destroy missing edges of 10, we heard (4)

Solution to crossword no. 214

E	N	C	A	M	P		D	I	S	B	U	R	S	E
	A	N		O		R		A		L		H		
S	T	I	N	G	R	A	Y		T	A	T	T	O	O
	A	O		T		N		A		I		O		
C	L	A	Y	P	I	G	E	O	N		M	U	T	T
					C	S		I		A		D		
G	U	M	B	O	O	T	S		C	I	T	R	O	N
	K		L							U		W		
T	R	U	A	N	T			V	E	H	E	M	E	N
	A		C		W			A		O				
L	I	N	K			I	M	M	A	T	E	R	I	A
	N		B		N		P		S		U		N	
D	I	R	E	C	T		I	N	H	A	L	A	N	T
	A		L		U		R		O		E		U	
U	N	S	T	A	B	L	E		T	H	R	I	L	L

We congratulate Richard Wilkins, the winners of last month's competition, who will receive a prize certificate from the editors. Honourable mentions go to Colin Dailly, Sue Jackson, Robert Nunn and Dainin O'Dowd.

Notes from the Parish Council March Meeting

Cllr Covill chaired a meeting of the Parish Council on Thursday 14th March, attended by 6 parish councillors and 1 member of the public.

Planning applications.

23/01330/LBC and 23/01329/FUL Amended plan/additional information.

Changes to approved garage conversion. Changes include, internal layout, external window and door fenestration, addition of rear timber decking, changes to the existing glazed link roofs – retrospective.

The Smock Tower Mill, Mill Hill Swaffham Prior Cambridge CB25 0JZ

The PC's agreed response to the application was as follows: the PC is still disappointed that the application is retrospective only and agree with the neighbour's response to the changes made. The PC want the reinstatement of the garage doors, the removal of the velux roof lights and the pantiles put back in line with the Mill's Grade II listed status. The PC remain extremely concerned regarding the blatant ignoring of the planning process.

Repair of the horse fence.

The quote received for repairs to the horse fence were felt to be too great an expense at present. The condition of the fence is to be monitored over the coming month and the quote kept on file.

Coopers Green.

A quote from Eastern Tree Surgery to clear the self-set vegetation and cut back overhanging trees at the back of Cooper's Green was accepted – to take place as soon as possible.

Temporary Traffic Regulation Orders for the weekend of 15th-18th March.

As Highways had already contacted Cllr Cane, declining to delay any Temporary Traffic Regulation Orders for either Burwell Road, Reach or the B1102 at Devils Dyke for the coming weekend, it was felt to be too late for the PC's writing to Highways to be effective. The contents of the emails and efforts of Cllr Cane were noted.

Survey for weed-killing operations for Highways.

The PC agreed to chemical weed control for the Parish on the pavements and curbs only and noted via the Highways Survey that there were no volunteer groups to undertake alternative weed control methods.

Policies.

A revision to the Memorial Management Policy was agreed. The revised policy will be available on the PC website.

Official PC portrait of King Charles III.

A free copy of an official portrait of the monarch is available to all parish councils. The PC had no objection to applying for the official portrait providing it could be suitably accommodated. The Clerk is to check if the Village Hall would agree to house it.

Heating Scheme

Nothing to report this month.

Clerk's Report

The Clerk noted a question had been raised over the type of memorial the PC allowed for cremation plots. After discussion, it was agreed that the Clerk will amend the Cemetery Regulations to make it clear that only flatstone memorials will be accepted on cremation plots – to be ratified in April.

Parish Councillors' Reports

Cllr Kent-Phillips noted that the Clerk had completed her in-house finance training.

Cllr Greenfield reported via email. The CPCA (Cambridge & Peterborough Combined Authority) are intending to improve interconnections along the B1102 to access different parts of Cambridge other than just Drummer Street. They approached the A to B1102 group to expand that idea, using the survey responses to provide detail and evidence of the wants / needs along the corridor. The Group recommended an updated No 11 service running from Soham Train Station through Soham, Fordham and then direct from Burwell and into Cambridge along the B1102. The old No11 then, when it arrives at Burwell from Newmarket, serves the villages acting as an interconnect with the new No11 direct route, before going from Lode through to Bottisham and on to the Wilbrahams, Fulbourn and into the Addenbrookes / Long Road area, terminating at Cambridge South Rail Station (when built). This offers solutions to numerous problems, not least in providing a fast route into Cambridge and also creates a viable new route serving the hospital, colleges, work and commuter traffic to London & beyond. None of the villages lose out in these proposals and most gain something significant.

The proposals will be circulated shortly by email and an agenda item at the April Meeting would allow discussion and enable a response to the Group from the Parish Council

Cllr Covill noted that the potholes in the local roads are now horrendous.

Open Question Time.

A member of the public asked if there had been any response to the proposed increase in the 2024-5 precept for the PC? Cllr Kent-Phillips replied none so far.

Produced from unapproved minutes and may contain errors; approved minutes can be found at <http://www.swaffham-prior.co.uk/pc/minutes.html>. If anyone would like any further information on any of the above items, please contact the Clerk.

The next monthly Parish Council meeting will be on Thursday, 11th April 2024 starting at 7.30pm at the Village Hall. All are welcome to attend.



CAMBRIDGE & PETERBOROUGH
LIGHT OPERA GROUP
Presents
Gilbert & Sullivan's
Iolanthe

Wed 19th - Sat 22nd JUNE 2024 7.30pm and 2.30pm Sat
Gardiner Memorial Hall, High St, Burwell, Cambridge CB25 0TF

Tickets: £12 Wed, £15 Thu- Sat eve; and £12 Sat matinee
From <https://cambridgeahighlightoperagroup.org.uk/>
<https://www.ticketsource.co.uk/aloc> (booking opening from 1st April),
or Telephone: 07706 577570

Parking, disabled access and licensed bar

NATIONAL TRUST NEWS FOR APRIL

Anglesey Abbey

The gardens at Anglesey Abbey are bursting with colour and our specialist daffodil tours are well underway, continuing until 21 April. You're welcome to come and join one of our knowledgeable garden guides if you'd like to find out more about the 40+ varieties across the estate. Among the swathes of daffodils, we've been treated to a delightful display of hellebores, hyacinths, scillas and now tulips so far this spring.

We're super excited about Easter at Anglesey Abbey this year and are delighted to be hosting free face-painting, bubble performances and volunteer-led art and craft activities as well as our fun-packed Easter Adventures trail for all the family. The trail runs from **29 March to 14 April** and includes welly wanging, egg & spoon races, a GIANT bird box, lots of interactive stations and a chocolate egg at the end. And as usual, little legs can enjoy climbing the treehouse and exploring the new den building area and play equipment. Please head to our website for more details and timings for the other activities which will be on different days throughout the school holidays.



And don't forget to look out for the beautiful blossom when you're next visiting us. The heritage orchard, planted in 2018 with 16 heritage varieties of plum, apple, pear and gages will come into blossom during April, surrounding an 80-year-old Bramley seedling apple tree. We will be celebrating the Festival of Blossom with some blossom-inspired poetry, music and even an origami making tent making an appearance **from 20 to 27 April** – do drop by to engage with nature this springtime.

We're also delighted to announce that **The Lord Chamberlain's Men** are coming to Anglesey Abbey this summer to perform Shakespeare's **HAMLET**. Join us for an evening of outdoor theatre on **Saturday 17 August**. Tickets are on sale now, please visit our website.

Wicken Fen

With the arrival of spring, we're enjoying being greeted by blossom and daffodils on the walk down the lane to Wicken Fen. The first few brimstone butterflies have been spotted and despite the rainy weather, March has brought lots of joy with the birth of new Konik foals. Fen Cottage is now open, and our cycle hire is open daily from 10am. If you'd like to enjoy a peaceful boat trip along Wicken Lode, please call us in advance on 01353 720274 to book your space on the Mayfly. On 3 March, we enjoyed welcoming members of the community to an archaeology drop-in day at Wicken Fen where we washed recent finds from test pits at Reach 24. We were joined by archaeologists from the National Trust and Oxford Archaeology as well as our community archaeology volunteers. This was the final public event in our 3-year Footprints community project funded by The National Lottery Heritage Fund and supported by National Lottery players.

Thank you to everyone who has attended Footprints events over the last three years – from Arty Fen photography and drama workshops for teens to guided walks with volunteer rangers and local fairs and festivals – we’ve thoroughly enjoyed seeing more people engage with and enjoy the space we care for at Wicken Fen. Of course, our community work doesn’t stop here – far from it! We look forward to running more community events, walks and workshops at Wicken Fen throughout the year.



Next up, it’s time for **Easter at Wicken Fen**. We’ll have our Easter Adventures trail along the boardwalk with lots of fun for all the family from **23 March to 14 April**. We’re also running some art and craft workshops that you can book for both children and adults: a mixed media Highland Cow workshop on 3 and 11 April as well as a watercolour workshop on Friday 5 April called Painting the Fens.

And finally, we are looking forward to celebrating our **125th anniversary at Wicken Fen** as well as 25 years of the Wicken Fen Vision Project. You are warmly invited to join us on **Saturday 4 May** for a community day. There will be a butterfly, birdsong and deep listening walk, some pond-dipping, pizza in the evening and the opportunity to meet some bird ringers and local moth recorders. Please head to our website nearer the time for more event details and timings. We hope to see you there!

Issy Vetoshkina (Photos: Issy Vetoshkina and Mike Selby)

FREECYCLE

Everything is free and nothing is expected in return.

If you have any offers or wants, please contact me by the 14th of each month by phone (01223 813362/07980 423210), e-mail (junthompson44@gmail.com) or drop a note through the letter box (23 Longmeadow).

Please let me know if you would like anything repeating in subsequent issues.

Offers

Woman's bicycle. Sturdy but needs attention. David 01223 811105

McAfee Total Protection (1-year subscription for 5 devices) and Microsoft 365 Personal 12-Month subscription. Received in a bundle when purchasing a laptop, which I already have these subscriptions for. Jun 07980 423210.

Wants:

500, 500XL and 1000 piece adult jigsaws for charity fundraiser; Also, adult paperback novels in good condition, please. Would collect or please bring to 2 Station Road, Swaffham Bulbeck, CB25 0NB. Judith and Chris Rice 01223 812085, 07745 286113

Exercise bicycle; glass fish tank Robin 01223811632



COUNTY COUNCIL MONTHLY REPORT MARCH 2024

Budget

The council agreed its budget on Tuesday 13 February, prioritising funding to improve the condition of roads and footpaths, social care, and support for vulnerable communities.

The county council had to close a gap of £37.4M, with 75 per cent of the Council's net spending now being funded from Council Tax. Councillors have prioritised a number of key areas, based on residents' feedback from last summer's Quality of Life survey.

The council agreed a Council Tax rise of 4.99 per cent—2 per cent for Adult Social Services, and 2.99 per cent for general services—raising £17.5M of local income to help maintain and protect critical services for the most vulnerable communities. For the majority of residents in Band A-D properties that will mean an extra 99p to £1.48 a week.

A balanced council budget for the coming year is no mean feat after over ten years of national underfunding, when so many county and unitary authorities are struggling. Some additional money from Government came in late, well after most councils had set their budget. But this one-year funding does not address the long term need for a Fair Funding Settlement in Cambridgeshire.

The council also expected the government's Household Support Fund to cease from the end of March. This is why the council's budget includes £3M to continue providing holiday supermarket vouchers for those most in need. Without this financial commitment from the council, this scheme would have had to stop when Government funding ended.

Shire Hall back on the market

Bids are invited for the lease or purchase of part of the Shire Hall site in Cambridge, after the previous preferred bidder was unable to continue their interest. The council has applied to give part of the lawn between the front of Shire Hall and the Mound the legal protection of 'Town Green' status, and has also invested in new interpretation boards and increased litter bins and maintenance to improve the visitor experience. These areas are not included in the disposal.

Have your say on creating Healthy Places

Work is currently under way to develop the Healthy Places Joint Strategic Needs Assessment for Cambridgeshire and Peterborough. To inform this, the team has launched a survey asking for views on access to healthcare services, inclusive and accessible green spaces, opportunities for active travel and healthy play and leisure, and the provision of affordable healthy food options.

The survey is at <https://www.smartsurvey.co.uk/s/WNC1CB/> and is open until Monday 15 April at 5:00PM. It will take around 10-15 minutes to fill in and may be completed on behalf of yourself or someone you care for. If you would prefer to complete a paper copy, you can pick one up from your local library.

Free data SIM cards for low income households

Cambridgeshire Libraries are part of Good Things Foundation's National

Databank, O2 and Vodafone scheme, which makes free data SIM cards or vouchers available to anyone aged 18+ from a low-income household. Recipients can self-declare as eligible, and the support is available for a maximum period of twelve months. The data can be used with any SIM-enabled device.

This offer is available at a range of libraries including Ely. Ask library staff for more details.

Reporting flooding

If you are in Cambridgeshire and have experienced flooding, please do report it.

In the event of a flood, if there is a threat to life call 999. To report a non-life threatening flood emergency to the police, please call 101. Outside of those events, the County Council’s flood reporting page <https://www.cambridgeshire.gov.uk/residents/travel-roads-and-parking/roads-and-pathways/report-a-flood>

Gully clearing

The council’s Joint Administration has reinstated the programme of regular, cyclical gully clearing that the previous Conservative administration ceased—a decision which had contributed to many local flooding problems.

Many thanks to Charlotte Cane for this. Eds

New Proposed Bus Services (See Letters)

Reference (linked to position in precept suggestion list from January board paper)	Start / Finish Points	Main points served	Characteristics/ Market Served	Service Category	Population in Catchment	Public Transport Trips within Catchment¹	Expected single journey²	Round trip time (incl. layover)	Headway (frequency)
8, 9 Revised Service 11 - Blue	Cambridge – Soham	Burwell, Saffron Prior, Saffron Bulbeck, Lode, Stow cum Quy	Direct service linking main points to Cambridge and Soham	New	16,615	448,605	0:56	2:00	60
8, 9 New Service - Orange	Newmarket – Addenbrookes Hospital	Burwell, Reach, Saffron Prior, Saffron Bulbeck, Bottisham & Wilbraham, Fulbourn	Largely rural – Linking villages to main centres	Contract	7,008	189,216	1:16	2:43	60
8, 9 Revised Service 11 - Blue	Cambridge – Soham	Burwell, Saffron Prior, Saffron Bulbeck, Lode, Stow cum Quy	Direct service linking main points to Cambridge and Soham	New	16,615	448,605	0:56	2:00	60
8, 9 New Service - Orange	Newmarket – Addenbrookes Hospital	Burwell, Reach, Saffron Prior, Saffron Bulbeck, Bottisham & Wilbraham, Fulbourn	Largely rural – Linking villages to main centres	Contract	7,008	189,216	1:16	2:43	60

Swaffham Prior Village Hall

April 2024

If you've ever visited Swaffham Prior village hall – perhaps for a village event, a regular class, a wedding reception or party then you'll know what an important local asset it is for people to meet and come together. Many hundreds rely on it every month and appreciate it being well presented and accessible.

Making this happen is a small group of volunteers, some working through a committee and steering its direction and some in a more hands-on capacity and both are invaluable. For this to continue we need help so if you have a few hours to spare, even on an occasional basis we would love to hear from you.

If you would like to find out more, please contact Philip Blackburn on 07501230256 or join us for our AGM which is on Wednesday 10th April at 7:30pm

These are just some of the regular activities happening throughout the month.
A full list can be seen on www.swaffhampriorvillagehall.co.uk

WI Meeting	3 rd Monday of each month 19:30 – 21:30	Contact Margaret on 01683 744390
SF-Fit Pilates	Each Tuesday 17:00 – 20:00	Contact Sarah on 075999072008
SF-Fit Pilates	Each Wednesday 10:30 – 11:30	Contact Sarah on 075999072008
PhysiOptima Pilates	Each Wednesday 09:00 – 09:50	Contact Kristin on 07799323867
Walking in your shoes – Dementia Care	Each Thursday 10:00 – 16:00	Contact Mike on 07884042590
Slimming World	Each Thursday 17:30 – 19:00 & 19:00 – 20:00	Contact Sharon on 077601925638
Tai Chi Life Academy	Each Friday 10:00 – 12:00	Contact Sharyn on 0774017917
Lok Hup	Each Friday 12:00- 13:00	Contact Sharyn on 0774017917
SF-Fit Yoga	Each Friday 17:00 – 18:00	Contact Sarah on 075999072008
SPVH - AGM	Wednesday 10 th April 19:30	Contact Philip 07501230256

If you're looking to hire the village hall, go to our website www.swaffhampriorvillagehall.co.uk for availability, bookings & prices.
For anything else contact Philip Blackburn on 07501230256

Anglesey Benefice Church Services for April

Wednesday 3 April

8pm CbyC, a contemplative service, online on Zoom

Sunday 7 April – Second Sunday of Easter

9am Online service on Zoom
10.30am Holy Communion, Bottisham
4pm Village Worship, Quy Village Hall

Sunday 14 April – Third Sunday of Easter

9am Online service on Zoom
Holy Communion, Quy
10.30am Family Worship, Swaffham Prior

Sunday 21 April – Fourth Sunday of Easter

9am Online service on Zoom
Morning Prayer, Quy
10.30am Holy Communion, Swaffham Bulbeck
Morning Prayer, Bottisham

Sunday 28 April – Fifth Sunday of Easter

9am Online service on Zoom
10.30am Holy Communion, Swaffham Prior

Each Thursday

10.30am Holy Communion, Lode

While the Benefice is in vacancy, please contact your churchwarden as follows:

Bottisham: bottisham@angleseygroupparishes.co.uk; 01223 604019

Lode: lode@angleseygroupparishes.co.uk; 01223 811222

Quy: quy@angleseygroupparishes.co.uk; 01223 812652

Swaffham Bulbeck: bulbeck@angleseygroupparishes.co.uk; 01223 812525; 01223 811501

Swaffham Prior: prior@angleseygroupparishes.co.uk; 01638 743937

For general enquiries: admin@angleseygroupparishes.co.uk; churchwards@angleseygroupparishes.co.uk

Facebook: www.facebook.com/angleseychurches;

A Church Near You: <https://www.achurchnearyou.com/church/7380/benefice>



Dates for Your Diary April 2024

Mon	1	Easter Monday Events at Anglesey Abbey and Wicken Fen continue to 14th [26,27]
Wed	3	Bookclub, 6pm, The Hollingsworth's, Lower End [15]
Wed	10	Village Hall AGM, VH, 7.30pm [30]
Thu	11	PC Meeting, VH, 7.30pm [25]
Sat	13	Quiz Night, VH, 7.30pm [5]
Sun	14	Serenata Sings, St Mary's, 4pm [11]
Mon	15	WI, VH, 7.30pm [17] Newmarket Cinema, The Stable, High St, Newmarket, 6.30pm [11]
Tue	16	Village Gardeners, VH, 8pm [19]
Thu	18	Mothers' Union, Fassage Hall, Lode, 2.30pm [19] Bottisham Medical Practice Patients Participation Group, 6.30pm [21]
Sat	20	Festival of Blossom week starts, Anglesey Abbey [26]
Mon	22	Crier Copy Deadline
Wed	24	Councillors' Surgery, Bottisham Sports & Social Club [21]
		May
Mon	6	Reach Fair, Fair Green, Reach 12 noon [8]

Numbers in square brackets indicate page number of an accompanying article

Club	Contact	Tel.	Date	Time	Place
FOSPS	Becky Wilkes	07827 318351	2 nd Mon of Term	8pm	Village School
Beavers, Cubs and Scouts	Tim Doe	01223 861083	Variable		
Reading Group	Brenda Wilson	743937	1 st Weds of month	8:00pm	Kent House
Village Gardeners	Fiona Geraghty	741712	3 rd Tues of month	8:00pm	Village Hall
WI	Margaret Joyce	744390	3 rd Mon of month	7.30 pm	Village Hall