



# The Swaffham Crier

Volume XLVII Number 10

October 2023



## Editorial

What a heat-wave! And just to coincide with our Harvest Show. Wholly understandably, the Dog Show had to be cancelled (see Letters) — it was too hot to even sit in the sun let alone scamper about — but the produce show went ahead and by all accounts was a great success. If, like us, you missed it we have some great pictures in this edition (many thanks to Andrew Noyes for these) EXCEPT there was a fantastic scarecrow so we're told, and unless he/she was quite lifelike, we don't think we have a picture at all. If anyone has a scarecrow photo, please send it in for next month.

Meanwhile, a new problem with the Heating Scheme. Having been compared in looks with a petrochemicals plant, it is indeed not much in keeping with its rural setting and what is more, it has glaring prison-camp style lights burning all night. This is not very fair to the people who live next door who incidentally cannot even benefit from the scheme

because they live in the wrong direction. Read all about it in Letters, the Heating Scheme News (p. 11) and from James (p. 12) and well done to Chris and Mike Carrington who are actively pursuing these and other problems with the Heating Scheme.

Keith Carter is back in this month's edition in hot pursuit of people who go around "verbing" nouns — he is *rubbishing* them in fact — see what you think!

See you at the Harvest Supper and the Open Tower day.



Anyone for squash?

Cover Picture: *White Fen*, oil painting by **Karen Fisher**

### Regulars

Letters	2-5
Our Reporter	6
This Month's Cover	5
Heating Scheme	11, 2, 12
Julie's Recipes	13
Book Group	15
CROSSWORD	20
WI	22
Mothers' Union	23
Cllrs Cane and Trapp	25-27
EAAA	27
PC Notes	28-31
Bon Mot	29
Wicken Fen	32
Village Hall Events	34
Church Services	35
Diary & Clubs	36

### News, Views & Reviews

Broadband News Update	7
Sprucing up St Mary's	8
Noun verbing!	14
Harvest Show	16-19

### What's On

Arthur Rank Firewalk	8
Harvest Supper	9
Tower Open Day	10
Care Home Play Sessions	33

**Caroline Matheson**



## Letters to the Editors



Dear Editors,

### Cancelled Dog Show

It was a great shame to have to cancel the Dog Show at such short notice, but the weather really didn't leave us any option. We would have been totally irresponsible to go ahead in such heat. We would however very much like to say a huge thank you to our most generous sponsor, Emma, from Chapel Farm Feeds at Upware, for the amazing prizes she had donated and only hope that we can prevail on her good nature to be a part of everything next year. Thank you also to Anne Clayton who was to be judging the classes but most of all to all of you who were ready to turn up on the day and join in the fun. We were certainly looking forward to seeing all the fancy dress entries.

*Janet Willmott and Mandy Kingsmill*

---

Dear Editors,

### Visual Impact of Heating Centre

*On 27 June this year I sent the following email to Heating Swaffham Prior:*

"Dear Sir,

When the Heating Scheme was initially proposed, we were told that the Heat Centre would be housed in a building of similar proportions and appearance to the existing (admittedly, rather ugly) barn in order to fit in with the rural surroundings. However, in reality the view is far from 'rural'.

By day, from our house the 'barn' is almost completely hidden by what looks like a small refinery or chemical works in gleaming white and silver.

By night, bright spotlights glare across the field, infinitely increasing light pollution as Heath Road is unlit. I can see no point in these lights, as except in the very depth of winter, they do not come on until well after the workmen have left.

In addition, they are on every night, weekends and holidays included, wasting energy, which is hardly 'green'. If they are meant for security, it would surely make more sense to have motion-sensitive lights. Currently, they merely provide illumination for would-be burglars and vandals.

I should explain that our vantage point is from further down Heath Road, the next building after the Heat Centre, on the side away from the village. We are not customers of the Heating Initiative, as none of the pipework extends in this direction, but that is not an issue, as the Heating Scheme gave us the idea of installing our own Air Source Heat Pumps, with which we are very satisfied.

Please can you assure me:

That trees will be planted on the Southwest border of the Heat Centre to at least partially mask the huge silver cylinders?

That the incredibly bright spotlights will be removed/turned off/modified to be motion-sensitive?"



*On 6 July, I received this message:*

“Apologies for the delay, we are still waiting feedback from our contractor.”

*This was followed 3 weeks later (28 July) by:*

“Apologies for the delay in getting back to you on this. The Contractor was developing a solution and we are pleased to say that they have installed motion detection lighting and also downlighters. They are currently replacing the lights, they have done 2 so far.

We hope this resolves the issue and if there is anything else that you would like to contact us about please do not hesitate.”

*In fact, I did not hesitate, but replied the same day:*

“Thank you for the response to my second question. I look forward to nights without the glaring lights. However, my first question remains unanswered.

Will trees be planted on the Southwest border of the Heat Centre to at least partially mask the huge silver cylinders?”

*On 3 August Heating Swaffham Prior responded:*

“Apologies for the delayed reply and not providing a response to the question below. There are no plans to plant tress [*sic*] but there will be a new hedgerow on the northern eastern side of the Energy Centre. This has not been done yet.”

*This time I waited for a week (in the hope of seeing some action on the lights) before replying on 10 August:*

“I had hoped to receive a more positive response to my queries.

With regard to screening: I refer you to document CCC\_21\_112\_VAR-PROPOSED\_SITE\_PLAN-46702 in which TWO rows of planting are proposed for the Southern side of the Energy Centre, i.e. the side away from the village, the side that is visible from Heath Road and Devil’s Dyke, etc. The approval of the scheme (and lack of local opposition) was based in large part on these plans, which you now imply will be ignored. Given the multi-million-pound investment in the Heating Scheme, it does not seem unreasonable to ask that a few hundred or even thousand pounds be used to mitigate the negative effects of the Centre on those of us in

the Community who, having paid the same rates as everyone else, have to see the ugly Centre every day without being able to gain any benefit at all from the Heating Scheme per se.

With regard to the obtrusive lights: Two weeks have elapsed since the assurance that the blinding lights would be replaced but no action appears to have been taken as they continue to glare across the field all night, every night. In this regard, I refer you to Section 9 of document CCC\_21\_112\_VAR-CONSTRUCTION\_ENVIRONMENTAL\_MANAGEMENT\_PLAN-43180 in which it is stated that “lighting levels should be as low as permissible” to “ensure light-sensitive species, such as bats, are not adversely affected”. That “sodium rather than mercury or metal halide” lights should be used, light spill should be minimised, and “the lowest permissible density, height and intensity” should be used on the site.

These commitments have also been ignored. One can only wonder what other ‘shortcuts’ have been taken. Please note that I will be raising this issue with my County Councillor.”

*(I forwarded the correspondence to Joshua Schumann on 10 August but have yet to receive any response or acknowledgement from him). On 15 August I received the following response from HSP:*

“Thank you for your email and we are currently making further enquiries. We will get back to you as soon as we can.”

*As almost a month had passed with no further response from Heating Swaffham Prior, and the lights were still blazing all night, every night, I forwarded the correspondence to the Parish Council in the hope of gaining support for ensuring that the visual impact of the Heat Centre (from Heath Road and Devil’s Dyke) and its biological impact are minimised, as was promised in the planning documents.*

*At the Parish Council meeting on 14<sup>th</sup> September, I learned that I was not the only parishioner to complain about light pollution, and that complaints had also been received about damage to the verge, noise pollution and the constant running of a diesel generator. David Greenfield assured us that anything promised in the planning documents would be delivered. He also promised to push HSP for more prompt responses to queries. In this, he was successful as I received the following less than 24 hours later:*

Our sincere apologies for the delayed reply regarding your enquiries below.

**Lighting** Our Contractor is looking to replace the lights in two-three weeks. These replacement lights will be downlighters and will be PIR and daylight sensor linked so will only be able to come on after dark and if movement is sensed. Once these are replaced there will not be light visible across the fields from the energy centre. If anything sets the PIRs off, these will be on a timer so will only be on for a short period of time until the movement stops. And the lights are downlighters so there will be very little light pollution horizontally if the lights do come on via movement sensing.

The contractor is awaiting the delivery of the fittings which should arrive in ap-

proximately 2 weeks time. Once they arrive these will be installed. Until then we are unable to turn off the lights at the Energy Centre because it would represent a security risk, due to the continued storage of valuable equipment within the energy centre.

Please be assured we committed to rectify at the earliest opportunity and apologise for any inconvenience this has caused.

**Planting and soft landscaping** Please be assured we will be providing the requirements of the Planning Conditions for the landscaping. The timing depends on the continued works that is required on site at the Energy Centre and there is a risk if the soft landscaping was carried out now it would be damaged at a later date. The works are also seasonal and the timing needs to be selective to allow appropriate taking of the planting. In this case, we are unable to complete the planting and soft landscaping at this time, however, we remain committed to carrying out all landscaping as outlined in the plans and our Rural Estates team will be working closely with our contractor.

*This all sounds very promising. We will just have to wait and see if the promises are fulfilled. It seems that, until complaints were made, visible and audible planning conditions were (and/or were apparently going to be) ignored. It makes me wonder if any other 'invisible' changes have been made to the submitted plans.*

**Chris Carrington**

---

Dear Editors

### **Flies and Midges**

It is all very well for Mr Everitt to bemoan the fate of flying insects but that is not something we suffer in the West Highlands. This year at one point there were **180,750 trillion** midges (*Culicoides impunctatus*). They hunt in packs of many thousands. They swarm round a person, getting into clothing, the throat - and they bite. That's why in the West Highlands they try to keep walking, wear bright coloured kilts which the midges don't like, put on face veils and try to find more wind.

**Robert McTavish**

### **This Month's Cover Picture**

White Fen can be explored a mile or so down Station Road by turning towards Lode along the cycleway. It is one of the local landscapes that inspires Karen's work. She writes:

*I'm a self taught artist, living in Swaffham Prior. I use traditional techniques to create oil paintings on canvas or panels. I am next exhibiting at the Cambridge Open Art Exhibition at Swavesey Village College on Sat October 14th from 10-5pm and Sun 15th from 10-4pm and in November with the Prior Arts Group in the Village Hall over the weekend of 25-26th.*

*Instagram : painting by karenfisher , Email [kfpaintingsuk@gmail.com](mailto:kfpaintingsuk@gmail.com)*

## From our Reporter

September. What a month. A heatwave. Our Dog Show was cancelled because of it. The number of dogs in the village has doubled or trebled in the last decade. Now we have them in all shapes, sizes and colours. What a jolly bunch most of them are with eyes that say “I will love you if you will me.” It would have been a bumper show. Something to look forward to next year now.

September was also the anniversary of Liz Truss’s 49 days. How easily we can forget. Few regret her departure though she still has her supporters such as Jacob Rees-Mogg, etc, waiting in the wings. Perhaps one day it will be the subject of Laura Kuenssberg’s *State of Chaos* on BBC2.



**Heating Scheme:  
some people have  
reported that the  
generator is going  
24/7, and that  
there is a  
constant whiff of  
diesel...**

RAAC came onto the scene. Who would want to be in government? The full exposure could have occurred at any time over the last 15 years or so. Why couldn’t it have waited for a few more years. Now they have even started looking into some of the buildings within the Houses of Parliament. That is a really hot potato. Pondered over and delayed by successive governments the latest full-scale restoration costs have risen to £22 billion. It is a potential fire risk. I fear there could be no action until the whole thing goes up in flames. And then the usual public enquiry and finger pointing.

Perhaps for some, more disappointing was the delayed publication of Nadine Dorries’s *The Plot; The Political Assassination of Boris Johnson*. It is possibly a brilliant pre-publication campaign by HarperCollins. Whether interested in politics, or not, very many people will certainly have an interest in such a colourful and remarkably outspoken person as Nadine. She is also a successful novelist with her next three novels already signed up for a very reasonable advance. In her book on Boris she promises that the “political dark arts will be revealed” and that the perpetrators will be “named and shamed” and that all will be “quite alarming for the conservative membership.” No holds will be barred as she defends her wondrous Boris and exposes all the villains who doubted Boris’s integrity which she thinks often bordered on genius. Publication has been delayed from September until November to “allow time for the required legal process.” I wonder how much will be changed or cut. Or, maybe Nadine is waiting for the results of the three October bye-elections to prove her point.

The Heat Scheme is currently not using ground source heating energy. We all know that. But some people have reported that the generator is going 24/7, and that there is a constant whiff of diesel. Surely this cannot be correct? Will David Greenfield post a notice in the *Crier* denying this vile calumny and say exactly what is driving the generator? We don’t want Just Stop Oil hearing the rumour and perhaps blocking Heath Road

Locally, people enjoyed the Harvest Show, Macmillan Coffee Morning, the

Book Club, Quiz Night, and the Harvest Supper. All leading up to the momentous Sunday 1<sup>st</sup> October.

On this day is the Prior Fen Chapel Harvest Festival in the tiny Chapel down the Fen. It really is a unique experience, and a chance to sing “Bringing in the Sheaves” etc. Quite unforgettable. Right on your door step. Even more important it is the International Day of Older Persons. This was initiated in 1990 by the United Nations to “honour the efforts of the elderly and the value they bring to society.” The 2023 definition of elderly is that those 65-74 are referred to as “early elderly” and those over 75 as “late elderly”. “Late” unfortunately also has a more ominous meaning. It is recommended that you celebrate the day by giving the elderly treats, perhaps asking to do them a favour, or even sitting down and asking them to tell you a story, important moments in their lives, or any thing else.

This could replace “What did you do in the war Daddy?” with “What did you do for the Elderly on 1<sup>st</sup> October?”

*Alastair Everitt*

---

## **Broadband Networks – An Update**

In my report in the August/September Crier I mixed up two different fast fibre broadband suppliers: County Broadband (<https://countybroadband.co.uk/>) who are planning to offer a service starting here early next year; and Gigaclear who have already started work in Bottisham and parts of Swaffham Bulbeck but do not appear to be planning to include Swaffham Prior. We’re waiting for an update from County Broadband but, as far as I know, they are still planning to start work here around Easter 2024.

Meanwhile Voneus, who took over the wireless broadband network from Air-Broadband who had in turn taken this over from the volunteer-run Reach and Swaffham Prior Community Broadband project (R&SP), have announced a higher speed offering, albeit only to 30Mb/s bidirectionally compared to options 10-30 times this which County Broadband’s all fibre network will provide. The other suppliers, who unlike these three rely on BT OpenReach cabling, can typically provide around 30MB/s incoming but only at best a third of this outgoing.

At the moment Voneus have been having some problems with reliability including our connection, and this has affected the Crier’s mail and its web site. We thought we’d fixed the Crier email problem about a year ago by moving its email to another supplier but there was still a small dependency on the Voneus network which the latest problems showed up – we’ve now moved that bit too. Apologies if you’ve been affected by any of this but we’re at last confident that the Crier email and web site no longer depend on the Voneus network (famous last words?).

We’ve also learnt that a quirk of reporting faults to Voneus by email is that, if they close the ticket (and you don’t necessarily get told when they do), any follow-up reply emails will probably not be noticed so you need to start afresh with a new message. And [helpdesk@voneus.com](mailto:helpdesk@voneus.com) appears to be the best contact rather than [broadband@voneus.com](mailto:broadband@voneus.com) which is what they advertise on their web site.

*James Matheson*

## Sprucing up St Mary's Church

We have a church to be proud of in Swaffham Prior. People visit from all over the world – especially to see the War Memorial Windows. Being one of two churches in the same churchyard also attracts tourists. Can you help maintain this lovely building by offering an hour every two months or so to do a bit of dusting, polishing or hoovering?

We are looking for volunteers to join the cleaning rota.

Men or women, old or young, work with a friend

or in the tranquil space on your own.

Please be in touch with Kate on [catherine.child.prior@gmail.com](mailto:catherine.child.prior@gmail.com)

to find out more about what is involved.

This may be suitable for DofE candidates – please enquire.

If only able to help occasionally we would also love to hear from you... we are hoping to have an autumn clean up session before too long.

Many thanks.

*Dee Noyes*

---

## Experience the Thrill!

### Join Arthur Rank Hospice Charity's Firewalk

Ready to step out of your comfort zone? This extraordinary event will test your limits as you walk barefoot across scorching coals. Arthur Rank Hospice Charity invites you to participate in their exhilarating Firewalk event on 18 November 2023. Be part of an incredible evening filled with self-discovery, courage, camaraderie, and the opportunity to make a meaningful difference in the lives of others. For just £35, secure your spot and get ready to ignite the night. But that's not all – as a participant, you'll be committing to raising £150 in support of the Charity. Every pound you raise will directly benefit patients and their families, providing dignity, comfort, and compassion during difficult times. Register today at [arhc.org.uk/firewalk/](http://arhc.org.uk/firewalk/) or email [fundraising@arhc.org.uk](mailto:fundraising@arhc.org.uk) or telephone 01223 675888



The image is a promotional graphic for the Firewalk event. On the left, a black rectangular box contains white and red text. At the top is the Arthur Rank Hospice Charity logo, which includes a stylized tree and the text 'Arthur Rank Hospice Charity' and 'making every moment count'. Below this, the word 'Firewalk' is written in large, bold, white letters with a red outline. Underneath, the text 'Will you brave the heat?' is in white. The date and time '5:30pm, 18 November 2023' are in red, followed by the location 'Arthur Rank Hospice, Shelford Bottom' in red. At the bottom left, it says 'Visit: [arhc.org.uk/firewalk](http://arhc.org.uk/firewalk) or scan this QR code:' next to a QR code. On the right side of the graphic is a photograph of a woman with curly hair, wearing a black t-shirt and patterned leggings, running barefoot across a field of glowing coals with her arms raised in a celebratory gesture. Other people are visible in the background of the photo.



# VILLAGE HARVEST SUPPER

## SATURDAY 7 OCTOBER

6pm, Swaffham Prior Village Hall

In aid of St Mary's Church, Swaffham Prior  
and Projects in Mara, Tanzania



Order forms now available for  
substantial salad supper  
with scrumptious puddings  
Bar serving wine and soft drinks  
Entertainment

Raffle draw for our famous Fair Trade hampers!

We would love to encourage everyone who would  
like to attend to come along, so this year ask that you

**“pay what you can afford”**

Previously, tickets cost: Adult £8.50; over 65/under 16 - £7.50; under 11 - £5

Please email for an order form  
[admin@angleseygroupparishes.co.uk](mailto:admin@angleseygroupparishes.co.uk);  
or collect a form from St Mary's Church

- ❖ Advance ordering essential; please book by 1 October
- ❖ Please advise of allergies when booking;  
we hope to be able to accommodate special diets
- ❖ Newcomers to the village/benefice especially welcome!

---

# TOWER OPEN DAY

---

FRIDAY 6TH OCTOBER 10.30-13.30

---



**Handbells**



**Talks & Tours**  
Last tour at 12.30

**Tea & Coffee**



**Have a go  
on the  
model bell**



---

## SWAFFHAM PRIOR

---

**FREE**

**No Booking Required**

In conjunction with the  
Churches Conservation Trust  
Volunteers' Open Day



**swaffhampriorbells@gmail.com**

---

*At St Cyriac's Church Tower*

## Message from the Heating Swaffham Prior Team – September 2023

### One year anniversary

The 13<sup>th</sup> October marks one year of the Renewable Heat Network! It was on this date last year when we turned heat on at our first property in Swaffham Prior. This is a significant milestone for the project and a fantastic achievement for the village.

We really have come a long way:

- We now have 100 external connections completed
- By November we'll have 65 properties fully connected to the heat network

To celebrate our one year anniversary we will be holding an event in the village hall on 18 October and the event will be open to all those whether or not they are connected to the network. Detail will be circulated.

### New Customers in Phase 2 Spring 2024

We have several new customers who would like to sign up to the heat network and over the next few months we will be in the village to talk to residents about what works best for the most people in terms of connections.

We are keen to complete the next phase of connections in batches across the different locations in the village. This helps ensure works are carried out effectively and efficiently and minimises disruption to the village during the external pipework installations. Resuming connections next spring, when (hopefully!) the weather will be improving, will give us the opportunity to carry out further testing of the heat network during the winter. We will be using this testing to optimise the system for everyone's benefit.

### Energy Centre landscaping and lighting concerns

We understand that there have been concerns raised about aspects of the Energy Centre site. We want to assure the village community that we are committed to carrying out all landscaping, as outlined in the planning conditions for the site. These works which include fencing and planting will be undertaken once access for equipment is no longer needed. We are keen to ensure planting is carried out at the most appropriate time of the year and incorporates a range of suitable species to enhance the biodiversity of this area. Our contractor is also looking to replace the lighting on site and a delivery of new lights will arrive by the end of September and will be installed at the earliest opportunity.

### Heat levels being delivered to homes

We have been monitoring heat levels delivered to homes across the network and levels have been well above our committed level of 62°C at the customer's side. The heat sensors inside the Heat Interface Unit provide an accurate reading of the temperatures coming into the unit and coming out of the unit.

## Snippets from the Heating Project

This month's article from the Heating Project (p. 11) contains partial answers to questions which Chris Carrington (see *Letters*) and I (see previous *Crier*) have put to them plus another numerical puzzle: they say "We now have 100 external connections completed - by November we'll have 65 properties fully connected to the heat network" whereas the PC Minutes record "Phase 1 is due to end at the end of September 2023, when 100 external connections will be complete; full connection for these will be completed by the end of November 2023". If both are right, 35 internal connections in a couple of months looks like a record.

The article implies that all the points Chris raises have been satisfactorily dealt with but Chris herself notes a number of places where their answers don't fully address the issues and their reply to her contains a phrase with which I've become all too familiar: "Apologies for the delay, we are still waiting feedback from our contractor."! There seem to be two points in particular on which greater clarity would be helpful. Firstly a hedge and trees were promised to shield the view but their reply to her only mentioned the hedge, and the article talks about fencing and unspecified planting. It is fair enough that there should be a delay until a suitable time for planting but we do need to be sure that what is then planted is adequate. Second we were all led to believe that the plant would blend into its rural surroundings whereas much of it would blend better into a petrochemicals plant.

I have been in continuing email contact with them over the summer over the point that I raised last time about supply temperatures sometimes being as low as the mid-50s Centigrade to which the response in the article is that temperatures "have been well above our committed level of 62C at the customer's side". Whilst it is true that the temperatures have at times been above 62C, my readings indicate that this is by no means the case all the time. Their replies have mainly focused on questioning the accuracy of my measurements but despite my repeatedly asking, they have yet to provide more than the one measurement that we can compare. This makes useful comparison difficult because the readings are only meaningful when there is flow through the HIU. The article does however contain the helpful assurance that "The heat sensors inside the Heat Interface Unit provide an accurate reading of the temperatures coming into the unit and coming out of the unit.". Assuming that by heat sensors they mean temperature dials visible in the HIU, since these are their only readings available to us, then for comparison I've attached photographs of these at 20:18 this evening (29 Sept) when my measurements were 63.8C in and 60.8C out (i.e. both higher!), and the outside temperature was 14.1C. According to the Heat Supply Agreement, this outside temperature should guarantee a supply temperature of around 65C.



I'm sorry to find myself again writing negatively about the Heating Project, especially as it is now beginning to deliver a useful service, but the way in which

throughout they've been reluctant to provide clear and accurate information and to work with and trust the village is frustrating and cannot help but give the impression that they have something to hide.

*James Matheson*

---

## **Julie's Halloween recipes**

### **Witches brew (pea & bacon chowder)**

1 tbsp olive oil  
1 onion, finely chopped  
1 garlic clove, crushed  
650g frozen petits Pois  
750ml vegetable stock  
6 rashers of streaky bacon  
1 tbsp butter

1.Heat the oil in a saucepan, add the onion and cook until softened. Add the garlic and cook a further minute. Stir in  $\frac{3}{4}$  of the petits pois and then pour in the stock. Bring to the boil for 10-12 minutes. Meanwhile grill the bacon until crisp.

2.Allow to cool for a few mins, then carefully transfer to a food processor and whizz until smooth.

3.Return the soup to the pan and add the remaining peas, bring to the boil again until the whole peas are tender, season to taste and stir in the butter. Break the bacon into pieces and scatter over bowls of soup.

Serves 4-6

### **Pumpkin bread**

175g butter, melted  
140g clear honey  
1 large egg, beaten  
250g raw peeled pumpkin or butternut squash, coarsely grated, about 500g pre peeled weight  
100g light muscovado sugar  
350g self-raising flour  
1 tbsp ground ginger  
2 tbsp demerara sugar

1.Pre-heat the oven to 180c. Butter and line a 1.5kg loaf tin with baking paper.

2.Mix the butter. Honey and egg and stir in the pumpkin or squash, then mix in the muscovado sugar, flour and ginger.

3.Pour into the prepared tin and sprinkle the top with the demerara sugar. Bake for 50-60 minutes, until risen and golden brown.

4.Leave in the tin for 5 minutes, then turn out and cool on a wire rack, serve thickly sliced and buttered.



## Did Harold Shipman sceptic many people?

It amuses me that the word ‘verb’ is a noun. I am not amused (in the Victorian sense) by the verbing of nouns. Oops. I mean the creation of verbs out of nouns.

Early in my career I had a boss who liked to ask people to ‘memorialize’ (write a memo), ‘diarize’ (create a diary entry) and ‘pencil’ things in. Americanising our cherished English language! I once overheard him threatening to ‘Emmanuel Kant’ someone, but this was the 1980s so the verbing might have been the least of the problem.

I Googled it and this annoying linguistic trend is a subset of anthimeria, which sounds quite respectable. This hot topic of vital current interest was what this Crier piece was supposed to bookmark, in the certain hope that in this well-schooled village several readers, considering themselves modern, would find this resistance to change objectionable. I mean, it’s not going to trigger people as did the matter of that evil, pernicious weed, ivy, but that some would be incentivised to keyboard a salty response seemed a good bet. Our dear editors are known to green-light lively discussion.

Then Alistair (of this parish) heard that as a boy I had been doctored by Harold Shipman. No, I mean Shipman was my GP. Alistair suggested – in that persuasive way of his – that I pen an article headlined ‘How I survived Dr Harold Shipman’. However, interesting though this sounds, the facts are too insubstantial to ground-work an article in this weighty publication: I was simply never sick enough to merit Dr Shipman’s attention. Plus, I was not an old lady, unlike our next-door neighbours the Misses Wolstencroft, both retired headmistresses. My mother once observed Dr Shipman leaving their house ‘stuffing fivers into his jacket pocket’. Pocketing their pensions. We never trusted him after that. Maybe Mum should have reported him...

Back then, doctors vanguarded the figures we all respected in the community, a group also membered with policemen, MPs, clergymen, solicitors etc.

OK, maybe Members of Parliament never membered this group.

Did Harold Shipman spearhead my loss of confidence in authority figures? Did he sceptic me at so early an age? Something must foundation-stone a frankly troublesome unwillingness to accept what the experts say. Something red-pilled me into 360° Fully Automated Luxury Scepticism on everything from a 97% consensus to a little man with an unwieldy Excel spreadsheet of virological doom. From a mistrust of supra-national entities to an unwillingness to abandon rudimentary biology. It’s exhausting. I culprit Shipman.



Illustration by DALL-E AI

**Keith Carter**

## The Reading Group Reads...

### Brother of the More Famous Jack by Barbara Trapido

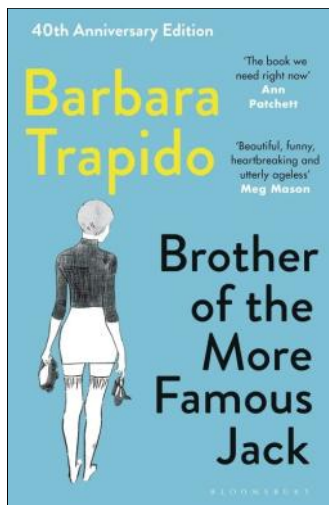
I have been a fan of Barbara Trapido's novels since I first read them in the early 1990's and this book is the first she wrote.

This book is a coming-of-age tale of a suburban eighteen year old girl who is now about to start university. Meeting one of her university teachers, Jacob Goldman, she becomes caught up in the chaotic bohemian life of his large eccentric family. There she becomes friends with his wife, a matriarch, and meets the beautiful, self-absorbed Roger and his brother Jonathan. Heartbroken following her affair with Roger, a man who wants a conventional wife, she flees to Rome to an arranged job and to a new lover. Again, she is unable to live as she wants, with family and career, and following her abandonment by the lover and the death of her child, she returns ten years later to find the Goldmans again, and Jonathan.

So many issues of the 70s are addressed in this book – for example, could women actually get a career and be a 'proper' wife and have a family? And it provided food for thought and a good discussion in our group.

Some of us will read more by her; Noah's Ark uses some of the same characters.

*Roz Chalmers*



**Exhibits from the  
Harvest Show—  
see centre pages**



## Autumn Show September 2023

Thanks to everyone who entered and supported the Show despite the overpowering heat.

Thanks to John Chalmers for brilliant Auctioneering.

And the amazing Scarecrow was made by Hugo and Ralph Cooper.

**Overall winner of Autumn Show Shield: Julian Luttrell.**



*Jenny Brand*

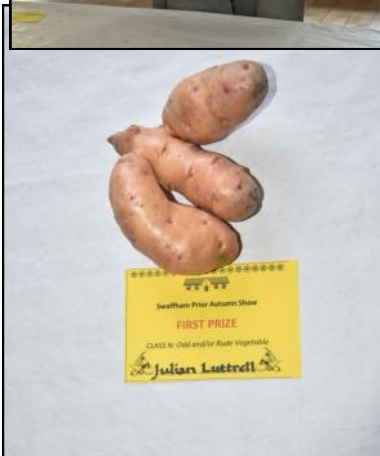




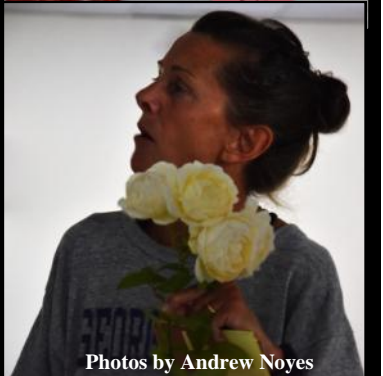
# The Winners

	1 <sup>st</sup>	2 <sup>nd</sup>	3 <sup>rd</sup>
French beans.	Julian Luttrell		
Runner beans.	Emily Thomas		
Onions.	Julian Luttrell		
Shallots.	Julian Luttrell		
Potatoes.	Julian Luttrell		
Cherry tomatoes.	Ruth Scovil	Linda Kirby,	Emily Thomas
Squash or Marrow.	Sarah Cooper		
Cucumber.	Andrew Noyes	Julian Luttrell	
Any other veg.	Linda Kirby	Julian Luttrell	
Odd veg.	Julian Luttrell		
Mixed Herbs.	Mabel Mercer		
True mixed Veg.	Mabel Mercer		
Desert Apples.	Anne Clayton		
Pears.	Judy Dean.	Julian Luttrell	
Plums.	Margaret Joyce,	Chris Brand,	Matilda Brand
Soft fruit.	Julian Luttrell	Chris Brand	
Roses.	Margaret Joyce,	Anne Clayton	Dan Spencer
Other flowers.	Philip Blackburn	Margaret Joyce	
Dahlias.	Jane Blackburn,	Philip Blackburn	Dan Spencer
Flower Arrangement.	Sophie Soares	Mabel Mercer	
Mini arrangement.	Jenny Brand	Margaret Joyce	Sophie Soares
Pot plant.	Chris Carrington	Jenny Brand	
Jam or jelly.	Ruth Scovil,	Hilary Grant	
Pickle.	Julian Luttrell		
Marmalade.	Ruth Scovil.	Margaret Joyce	
Other preserve.	Margaret Joyce		
Homemade wine.	Sarah Cooper		
Eggs.	Sarah Cooper,	Wilf Lambert	
Victoria Sandwich.	Dan Spencer,	Ruth Scovil	
Other cake.	Dan Spencer		
Hand made bread.	Julian Luttrell	Dan Spencer	
Miniature Garden.	Fiona Wright		
Veg Animal.	Wilf Lambert		
Decorated Cakes.	Wilf Lambert	Nama Soares	
Photography.	Andrew Noyes	Julian Luttrell	Chris Carrington

# Harvest 2023



# t Show 23



Photos by Andrew Noyes

Crossword Number 209

Compiled by BYWELL

\*clues contain no definition. Answers are of a kind, as espoused in my theory here.  
Send your answers to the editors by 18th October 2023. The sender of the first correct solution out of the hat will be awarded a *Winner's Certificate*. Emailed solutions are acceptable but please include "CROSSWORD" and the crossword number in the header.

1		2		3			4	5		6		7		8
9							10							
11							12							
						13								
14					15				16					
				17						18		19		20
									21					
22		23		24		25								
26									27					
28									29					
30									31					

Name:.....

Address:.....

.....Tel:.....

## Across

- 1 Member of Society: Is it me following uneven trash? (6)
- 4 Seek holy reform to help open doors (8)
- 9 \* Drill-like (6)
- 10 Personality in a crash? I'm not certain (8)
- 11 Sponge for washing halo of revolutionary (6)
- 12 \* Each silo is presented differently (8)
- 13 This thing's in the middle of Whitsun (3)
- 14 \* Musical interval that has no echo (6)
- 17 This means the same: nearly all bishops gathering before the city mass (7)
- 21 \* Put on airs, unhappily after releasing a bit of wind (6)
- 25 \* Ultimately take no chances (3)
- 26 Arm-wrestle without me fumbling with catches sometimes (8)
- 27 Pink sprays from Persia, after its revolution (6)
- 28 Here might be contempt expressed back in a rebuilt Dubai (3,5)
- 29 \* Hear me properly (6)
- 30 \* Atlas has another work-out (8)
- 31 Fly back east without a shirt; it's 135 degrees! (6)
- 6 \* Embroided in another mess (6)
- 7 Port is good in France; and here you would think! (6)
- 8 Thinly spread, overbearing set of shops (6)
- 12 \* With regard to having a PT exchange (7)
- 15 \* Integrated components in Sony Xperia (3)
- 16 It hurts: the doctor comes round finally, in the end (3)
- 18 \* Rioter leaves mother superior in distress (8)
- 19 Least forgiving ways to trap an eagle (8)
- 20 Step up from Milanese house in complete closure (8)
- 22 The cobbler's place, finally (2,4)
- 23 Missing part from lake in France and one in Italy (6)
- 24 \* I'm leaving hate mail, which then erupts (6)
- 25 \* Can be rewritten, to be sure (6)

## Down

- 1 Set out regularly playing the tuba but not keeping time (8)
- 2 \* Injury on Great North Road travelling up (8)
- 3 \* Santa gets hot, and bothered (8)
- 5 Itches to develop moral values (6)

## Solution to crossword no. 208



We congratulate Robert Nunn, the winner of last month's competition, who will receive his prize certificate from the editors. Honourable mentions go to Sue Jackson and Trish Whitehead.



## The Swaffhams' WI—August

In August we had a most enjoyable morning, very close to home. We visited the Prospect Trust's Snake Hall Farm, on a brilliantly sunny morning. I think we were all very surprised, apart from a few members who remembered it as children, to find so many acres behind the shop and farm gate. All this is given over to the growing of organic plants, fruit and vegetables, which supplies, amongst other shops, Arjuna in Cambridge and the Lighthouse green grocery and cafe in Ely. Several of the co-workers, we were told, are a dab hand at making cakes and buns.

The Prospect Trust was set up in 1989, as a charity that provided care placements, offering work experience and skills training for people with additional learning needs, learning disabilities and Autism. On the 18 acre site, a salaried team, currently supports 70 co-workers, along with volunteers.

**The Prospect Trust.....on the 18 acre site, a salaried team, currently supports 70 co-workers, along with volunteers.**

The ethos of support, encouragement as well as training, is central to their work and it was made clear to us how important this is. Everyone can do something in this hive of activity - weeding, sowing, planting, digging, weighing, sorting, bagging up and baking.

We didn't meet any co-workers as it was a weekend, but we were shown round by Mark and a member of his team. Several volunteers were busy amongst the amazing variety of produce they grow - in large beds, raised beds, orchards and poly tunnels.

Like similar enterprises, they are always looking for fundraising ideas and volunteers who can offer a couple of hours or a couple of days a week. Nota Bene.

Our next meeting is on October 16th-7.30pm at the village hall, when the speaker will be Helen Ackroyd, tallying about the history of Anglesey Abbey.

All are very welcome.

*Margaret Joyce*

## ... And from September

As I sit in my kitchen writing this report, I can hear the wind blowing a gale outside bending the trees and already blowing the leaves across the garden. The end of summer is finally on its way and autumn is making herself known. The strength and beauty of nature were reflected perfectly by our guest speaker at our WI meeting on Monday 18 September. Clare Kenwood, who runs a stunning flower studio in Cambridge, returned to talk to us about how to make the best of arranging our flowers and foliage whether they are from the garden or bought locally. Clare is a strong advocate for





healthy, how to cut them to size depending on the vase and how to arrange the flowers based on a three-point triangular image. Clare was an inspiration to us all; not only a very entertaining speaker but also an ambassador for sustainability within the floristry industry. A huge thank you to Clare from us all for sharing her wisdom and bringing the most stunning flowers to the meeting.

Our next meeting is on Monday 16 October in Swaffham Prior Village Hall at 7:30pm where Helen Ackroyd will be giving a talk on Anglesey Abbey House. Do please come along and join our vibrant and friendly group.

*Kate Muscroft*



## Mothers' Union—August

In June members had an outing to Ely Cathedral for the 'Threads through Creation' Exhibition. The amazing display of twelve huge embroidered panels retelling the story of creation, inspired by Genesis the first book of the bible. The amazingly colourful and wonderfully worked silk panels are by textile artist Jacqui Parkinson. They begin with illustrations of the first days of creation, then gradually become more complex as the story takes you into the Garden of Eden. The coolness of the cathedral was most welcome on a hot sunny afternoon, and following the exhibition we all enjoyed a cream tea at The Almonry Tea Rooms.

Revd. Valerie Kilner was our guest speaker in July, giving a presentation on the MU theme for this year 'Transformation'. Valerie gave us a light hearted, and thought-provoking talk on the various interpretations of transformation, beginning with the

ashes used for signing the cross on Ash Wednesday. Transforming Palm Crosses from the previous Palm Sunday to ashes by burning them. Moving on briefly to God forming man from the dust of the ground and the transformations that took place in the creation. We then concentrated on the Bible's numerous references to potters and the clay, and how the block of clay, by the potter's hand, can be made into a beautiful item. The Bible refers to potters and clay in both the Old and New Testaments. Valerie put this into context with our trust in God especially when we are troubled, we find our strengths through our faith and his love to transform and restore us. A pot that is cracked or broken can let light through, and a broken pot can be repaired and become a transformed pot of beauty. Valerie gave the example of Kintsukuroi ("golden mend") the Japanese art of mending broken pottery using lacquer resin with gold or silver. This form of repair has a deeper philosophical significance. The mended flaws become part of the object's design and some people believe the pottery to be even more beautiful having gone through the process of being broken and repaired. Transforming the artefact into something new, making it more rare, beautiful, and storied than the original. Throughout the session Valerie used bible passages, quotations, a musical composition, and small clay items she had made herself, which complimented her presentation, and gave us all a most pleasurable afternoon.

At the time of writing 19 ladies have enjoyed an August afternoon tea party at Station Farm. Sincere thanks to Julie Sale for providing the venue for this event.

## **...And from September**

Donations gratefully received at our Summer Afternoon Tea Party, raised £88 for the Mothers' Union Summer of Hope Appeal. This appeal provides help to parents and children who need support.

Our normal Thursday afternoon meetings resumed on 21<sup>st</sup> September, 2.30pm in Fassage Hall, Lode. Wendy Bowen spoke about: 'The transformation of women's lives at the Jungle Doctor Hospital in Tanzania'.

The Mothers' Union Diocesan Autumn Meeting will take place on Saturday 14<sup>th</sup> October in Waterbeach Church Hall at 10am. Revd. Matthew Bradbury will be speaking on the topic of 'Modern Slavery'.

Our branch meetings usually take place on the third Thursday afternoon of each month in Fassage Hall, Lode at 2.30pm. We will be holding our Autumn Social and Bring and Buy Stall on the 19<sup>th</sup> October. You are most welcome to come and join us.

***Ann Langran***







East  
Cambridgeshire  
District Council  
[www.eastcambs.gov.uk](http://www.eastcambs.gov.uk)

From our District Councillors  
Charlotte Cane &  
John Trapp

### From August:

This Council's Youth Engagement strategy was discussed at the Operational Services Committee in June. As part of that strategy a Youth Fusion Event was held at Bottisham Sports Centre, showcasing opportunities and support for young people across the District. Two other events were held in Littleport and Soham. It is hoped that similar events will be held across the District in future. Those who missed the events can find out more about services for Young people at - <https://www.eastcambs.gov.uk/youth-pages/welcome-ecdc-youth-webpages> . We



also agreed the updated Environment Plan with the actions for the current year. The plan commits East Cambs to reducing the carbon from its operations by at least 80% by 2030. This is a welcome, but challenging target and there was no clear plan to achieve it, so we supported an amendment calling for officers to draft a plan for achieving the target. The meeting reviewed the finance report for the Committee's areas of responsibility and noted a revenue overspend of £742,000 – 13% of budget. Just under £500,000 of this overspend was the increased fee to ECSS for waste collections. There was an almost £3million underspend on capital, due to delays in programmes – notably the Disabled Facilities programme. In response to her question Charlotte was assured that the Council were taking actions to try to get this programme back on schedule, so that people with disabilities can have the necessary adaptations to their homes.

We also had a very interesting presentation from Voluntary and Community Action East Cambs. Although they are based in Ely, they are happy to help around the District – they offer a community transport scheme and a gardening scheme for people who need help with their gardens. If you need help with transport, and the village schemes cannot assist then contact 01353 666 553 or email [car-scheme@vcaec.org.uk](mailto:car-scheme@vcaec.org.uk). If you need help with your garden contact 01353 666 556 or email [gardening@vcaec.org.uk](mailto:gardening@vcaec.org.uk).

Finance & Assets Committee in July noted that the Council as a whole had a revenue underspend of almost £2million and a capital underspend of almost £2million. The Committee appointed people to outside bodies and John was appointed to the Swaffham Internal Drainage Board.

Full Council in July approved the Corporate Plan for 2003-7 and the actions for 2003-4. At the meeting we made the point that the street improvement actions should not be limited to towns and Ely City and that streets needed to be well kept in villages too. We welcome the recognition in the Plan that the Planning Service,

waste collection and street cleaning need to be improved. We are also pleased to see that after refusing our proposals to start the new Local Plan process, as recently as February this year, they are finally starting the process with preliminary work on a new Climate Chapter and budgeting for work to start on a new local plan from 2024/25.

Audit Committee approved the Statement of Accounts for the year ended 31 March 2022, and these have now been published. The External Auditors were unable to present their plan for auditing the Accounts for the year ended 31 March 2023, or even give a timetable, because of the significant backlog in auditing Local Authority Accounts across the country.

The Combined Authority's Overview and Scrutiny Committee met in June and elected Charlotte as their Chair. The Committee had the opportunity to question the Mayor and his teams about their plans for Cambridgeshire. There is a new senior management team and they are planning to move initiatives forward, including supporting skills training and better public transport.

Charlotte is meeting with the Mayor and his Director of Transport after this article goes to press to discuss the problems caused now that the number 11 bus no longer stops at Bottisham. She will report back on the outcome next month. The government gave the Mayor an extra £2.3m for buses this year, which sounds a lot until you realise that the budget for subsidising the buses across the County – including the number 11 bus – is £7m each year. Under the current system bus operators choose which routes to run commercially, and keep all the profits from those routes, and local authorities have to subsidise any non-profitable routes which they feel should be kept running. The Mayor is considering franchising buses where the Combined Authority would be responsible for all routes and would pay companies to run them, keeping the profits to help off-set the subsidies.

### **... and from September**

August was a quiet month on the District Council, but the regular meeting cycle has started up again.

We continue to receive complaints about how Sanctuary Housing are managing their properties – serious problems with damp and mould, long delays in completing repairs, properties remaining empty for months or even years, anti-social behaviour by and towards tenants. We take these up individually but have also asked for a meeting with the local manager to discuss the issues more generally.

After John had arranged meetings with the GCP Greenways project managers and consultants to discuss local concerns with the Greenway projects in Swaffham Bubeck and Bottisham, meetings were also held in Swaffham Prior and Lode. The Greenways schemes aim to deliver safe cycle routes through to Cambridge, but the initial local consultation was carried out before the Covid lockdowns.

Charlotte was joined by Jonathan Cook from the AtoB1102 group when she met with the Mayor and his transport team in mid-August to discuss the number 11 bus route, and other local bus issues. It was a very positive meeting, and discussions are continuing. The Combined Authority is reviewing the subsidised bus network to

ensure that it is getting value for money from the £7.5m which it spends on buses each year. The review has recommended that the 11 between Newmarket, Burwell and Cambridge and the 904 between Newmarket, Dullingham and Brinkley be continued with no further review, along with many other services. They will also be looking to trial a demand responsive bus service in East Cambridgeshire.

Our next meet your Councillors will be on Tuesday 24 October 6.30-7.30pm in Reach Village Hall. You are always welcome to contact both of us directly – [john.trapp@eastcambs.gov.uk](mailto:john.trapp@eastcambs.gov.uk), [charlotte.cane@eastcambs.gov.uk](mailto:charlotte.cane@eastcambs.gov.uk)

---

## East Anglian Air Ambulance

Firstly ( another ) HUGE thank you to everyone who supports EAAA, by whatever means. What you are doing is working but this is no reason to rest on our laurels – our target to cover all our costs continues high – about £17m in fact ! So, when



you see that little red collection box ‘winking’ at you by the till, please respond with a few coins, some coins, Lots of coins ! Purchasing methodology is changing, rapidly, so please carry real money even though you often use ‘plastic’ to pay.

There are, however, many other ways through which you can support us and help make a difference. 2022 saw EAAA tasked with over 2500 missions, attending 443 cardiac arrests, 386 road traffic collisions, 268 falls, 354 other medical emergencies and, would you believe, 60 assaults !

Unfortunately, where cardiac arrests are concerned, survival rates for patients who do not receive early bystander CPR or defibrillation are incredibly low, so we know anytime the bells ring for a cardiac arrest mission, time is essential. The wife of one such patient, Chris, was able to give CPR followed by the crew’s assessment, critical care on scene and subsequent treatment at Norfolk and Norwich University Hospital. Recovery has not been straightforward, Chris having suffered two strokes, a bleed on his brain and another cardiac arrest. He spent four weeks in a coma, six in critical care plus another week on a ward. Nearly a year on, Chris is recovering well and reflects how crucially important to his survival had been his wife’s CPR, EAAA critical care and the whole sequence of support.

To get involved and to give more patients like Chris a chance of survival please volunteer to support our hugely worthwhile charity. Our ‘Trek 24’ walks are back in Suffolk and Norfolk – why not join in, have a great day in the countryside and support EAAA in the process. Or just volunteer at an event not too far from you - do please get in touch via [info@eaaa.org.uk](mailto:info@eaaa.org.uk)

Help EAAA save lives in East Anglia – ‘together we save lives’.

***Michael White***

## **Notes from the August Parish Council meeting**

Cllr Covill chaired a meeting of the Parish Council on Thursday 10th August, attended by 9 parish councillors and 2 members of the public.

### **Reports**

East Cambridgeshire District Council – report circulated by email prior to the meeting. Cllr Charlotte Cane attended as representative.

Cllr Cane noted that:

The Finance and Assets Committee's Statement of Community Involvement sets out how the committee will interact with the PCs;

The Cleaner, Greener East Cambridgeshire initiative was focused almost wholly on towns, but that villages needed to be taken into consideration;

In 2024, it was intended that ECDC review the 2015 Local Plan

Cllr Cane has scheduled a meeting with Mayor Nik Johnson to discuss the bus routes, with particular emphasis on whether to reintroduce a stop at Bottisham for the number 11.

Cllr Kent-Phillips noted that his query regarding the final cost of the Heating Scheme was still unanswered (CC agreed to look at it again) and that the information regarding the Pride of Place grants and the template for a Nature Recovery Plan for PCs had been passed on to Mike Barker, who will report to the PC in September.

### **Planning applications received:**

23/00760/LBC and 23/00759/FUL Contamination remedial works. 17-19 High Street, Swaffham Prior, Cambridge, CB25 0LD.

No objections or comments made.

### **Policies etc.**

The PC adopted and/or agreed updates to the following:

Press and Social Media Policy

Grant Giving Policy

Publication Scheme

Activities Plan

All documents will be made available on the PC website.

### **Letter from several PC's regarding CCC representation to the parishes.**

After some discussion, it was agreed that the Chair of Swaffham Prior PC should sign the letter drafted by Chippenham PC on Swaffham Prior PC's behalf.

### **Report on Greenways Scheme meeting 2<sup>nd</sup> August & slip road survey.**

Cllr Greenfield reported. A meeting took place involving 2 GCP representatives, 2 representatives of the designers, a representative of Lucy Frazer MP, Cllr Anna Bailey, Cllr John Trapp, DG and PL. The meeting resulted in a commitment for the GCP and designers to look at the proposal again. PL had pointed out the further reduction of the width of the road was unsupportable and the request was made that the current access and egress of the cycleway on the sliproad be redesigned; the GCP expressed reluctance to do this due to concerns of cyclist safety.

It was agreed that the Clerk will write thanking all for their time and attendance

and looking forward to seeing the revised plans for further consideration by the Parish Council.

Cllr Latchford noted that the PC response to Burwell PC's request for support for continuing the Greenway to Burwell will be affected by the outcome of the scheme through Swaffham Prior.

Cllr Kent-Phillips noted that he had obtained two quotes (from approaching 5 different companies) to monitor the speed of traffic as it leaves the sliproad – to be kept on file.

### **Report on Heating Scheme**

Cllr Greenfield reporting. All internal and external surveys have been completed for existing customers.

89 external connections are complete. 42 properties are fully connected. 32 additional customers have applied to join the scheme, to be surveyed in the autumn and connected to the scheme in the spring. The ground source and air source heating have been fully commissioned and the Scheme has gained Accreditation.

Cllr Hart asked about the overgrown footpath around the Heating Scheme field, which belongs to CCC but should have been fully re-instated by the Heating Scheme. Cllr Greenfield to pass on the need for the path to be made usable.

Cllr Latchford asked if the Heating Scheme had been contacted by Anglia Water regarding a leak at the church end of the village; Cllr Greenfield said he wasn't aware if they had.

### **Parish Councillors' Reports**

Cllr Muscroft introduced herself as the newest member of the PC.

If anyone would like any further information on any of the above items, please contact the Clerk.

The next monthly Parish Council meeting will be on Thursday, 14th September 2023 starting at 7.30pm at the Village Hall. All are welcome to attend.

Jude Griffiths – Clerk to the Parish Council. Email [swaffhamprior-clerk@gmail.com](mailto:swaffhamprior-clerk@gmail.com)

## **BON MOT NUMBER 142**

“Steam engines are like women.

You have to treat them right.

If you don't treat them right  
they let you down.”

*An old steam engine driver.*

## **Notes from the September Parish Council meeting**

Cllr Covill chaired a meeting of the Parish Council on Thursday 14th September, attended by 8 parish councillors and 7 members of the public.

### **Reports**

East Cambridgeshire District Council – report circulated by email before the meeting. Cllr John Trapp attended.

Cllr Trapp noted that a meeting was scheduled for the next day between the District Councillors and Sanctuary Housing to discuss issues regarding repairs, renovations, deterioration of housing and the length of time some properties are remaining empty.

Cllr Trapp noted that discussions whether to re-instate the Bottisham bus stops on the number 11 route are taking place, with arguments both for and against. A trial Fulbourn to Lode route had been suggested, providing ‘cross routes’ rather than many stops on one route. Cllr Latchford asked if Sunday buses were under discussion as there are none at present. Cllr Trapp said it was a question of finance. Stephensons is subsidised and at present the no. 11 route should continue after October 2023. Cllr Trapp would like franchising of bus services, so that profitable routes can subsidise less popular ones.

### **Correspondence.**

A request for a PC contribution to the costs of repainting of wooden sign at the bottom of Rogers Road. Clerk to ask for figures and a quote.

A letter from CCC regarding their weed-spraying policy and an email from Cllr Steve Count with a petition regarding the weedkilling of footpaths and cycle paths. To be discussed at the October meeting.

### **Planning applications.**

23/00942/FUL Two levels of raised decking to the rear – retrospective. 10 Green Head Road, Swaffham Prior, Cambridge, CB25 0JT.

The PC agreed to comment that the decking should have been built to planning standards and recommend that the Planning Department advise on this and on the privacy concerns.

### **New Policies.**

The PC adopted a Training and Development Policy and a General Risk Assessment document, both of which can be viewed on the PC website.

### **Parish Nature Recovery Plan.**

Mike Barker reported on a CCC/ECDC arranged event looking at rewilding and improving green spaces. After discussion, it was agreed that Mike Barker could draw up a plan with basic costings for Swaffham Prior, to be discussed at the next available Parish Council meeting.

### **Maintenance of the cemetery.**

The PC agreed to get quotes for putting in metal path edges, with the intention to get the path resingled once the edges have been repaired/replaced.

Cllr Durrant suggested that the long grass at the front left of the cemetery be cut down, to uncover the wild primroses and that the area on the right, with very few

grave markers would be more suitable for rewilding.

Cllr Greenfield to check that CGM are mowing all the areas of the cemetery that should be.

### **Preparation of the new allotment plots ground.**

The PC accepted a quote from Meads Construction for the work.

### **The Heating Scheme**

Cllr Greenfield reported. The total cost of the heating Scheme was £9.4 million; £5.9 million for the Energy Centre and £3.5 million for the heating network, of which £2.9million was a capital grant.

Phase 1 is due to end at the end of September 2023, when 100 external connections will be complete; full connection for these will be completed by the end of November 2023.

Phase 2 will start in Spring 2023. Households in addition to the first wave of sign-ups will be joined to the network and there will be a push for more customers. Planning of installations will be better managed for this phase.

Cllr Hart asked if the network cost included the cost of connections; Cllr Kent-Phillips asked the cost of the cable connecting the energy centre to Burwell Solar Farm. Cllr Greenfield did not have the answer to these questions.

### **Clerk's Report**

The Clerk noted that Wicksteeds had given a date of 18<sup>th</sup> September to begin installing the new play equipment.

### **Parish Councillors' Reports**

Cllr Greenfield had been contacted by 2 parishioners regarding the following concerns related to the Energy Centre:

Damage to the verge at the entrance. This is to be fully re-instated.

Light pollution. Mitigation is in progress.

Noise pollution. Mitigation for the cooling system noise (particularly in hot weather) is in hand.

The onsite generator that is on constantly. This will go with the temporary cabins when the site is cleared.

Tree and hedge planting. This will be as planned and the window for planting is approaching.

Cllr Hart noted that the footpath beside the Energy Centre has a 5mm cable trip hazard across it near the hedge to the next field – Cllrs Greenfield and Lambert will alert CCC as the landowners.

Cllr Covill noted that the harvest festival will be taking place in the Little Chapel in the Fen on 1<sup>st</sup> October and that more potholes had been marked for repair on the Fen roads.

If anyone would like any further information on any of the above items, please contact the Clerk.

The next monthly Parish Council meeting will be on Thursday, 12th October 2023 starting at 7.30pm at the Village Hall. All are welcome to attend.

***Jude Griffiths – Clerk to the Parish Council. Email  
swaffhampriorclerk@gmail.com***

## News from Wicken Fen Nature Reserve

The autumn colours of the Fen are starting to show, as the purples and red of berries and golden hues of reeds emerge. Migrant birds will be arriving over the next few weeks, so look out for fieldfare and redwing, and wildfowl such as wigeon on the areas of open water.

### Community ceramics workshops

We'd like to say a big 'thank you' to everyone who participated in our recent ceramics workshops. This activity is part of an Arts Council research and development project to help us put together an application for a creative programme for our 125<sup>th</sup> anniversary next year. Keep an eye out for the next magazine when we will have details of the exhibition of the ceramic artefacts created as part of the project, and collection of the fired pieces.



### Wicken Fen's 125<sup>th</sup> Anniversary 2024

We're going to be celebrating our 125<sup>th</sup> anniversary next year, and we're looking for old photos of the Fen or of people enjoying a visit to/walk at the reserve. If you have any that we could use, please contact Isabel Sedgwick email

[isabel.sedgwick@nationaltrust.org.uk](mailto:isabel.sedgwick@nationaltrust.org.uk)

### Archaeology at Reach 24 - Saturday 14 and Sunday 15 October

There will be excavation of some test pits at Reach 24 in October as part of Footprints; our NLHF project. We'd like to invite people from the surrounding communities to come along to see what we're doing and try excavating using a trowel and sieving soil at our community test pit. Come along between 1 and 3pm on Saturday 14 October, or 10am and 12pm on Sunday 15 October. See the events section of our website for more details (URL below).

### October half term – family fun

Join our family trail to find out what animals do in the winter, make a bird box or create a street of wooden houses at our workshops – find out more on our website including booking details.

### Mother and Father Christmas at the Fen

Mother and Father Christmas will be visiting Fen Cottage again this year. Tickets are now available on our website for our popular festive event and are selling fast. Check our website for information.

### Christmas Wreath Making Saturday 25 November

Come along to the Fen and make your own wreath, using natural materials collected locally. We'll provide everything you need and some handy tips to get you started. Booking essential via our website.

For the latest reserve information, please visit our website [www.nationaltrust.org.uk/wicken-fen](http://www.nationaltrust.org.uk/wicken-fen). Details of our events can be found on our website at <https://www.nationaltrust.org.uk/wicken-fen-nature-reserve/whats-on>.



# Stay and play session

at Oaklands care home

Every other Thursday 9:15-11am

Join us for a morning of play, singing and stories in our baby and toddler group. The group is free to attend and there will be refreshments and snacks provided.

Dates 24th August, 7th September, 21st September, 5th October

Please contact us below for more information, we hope to see you there!



Oaklands Care Home

Bottisham, Cambridge, CB25 9BX

Tel: 01223 811256 • [www.barchester.com](http://www.barchester.com)



Nursing Care • Dementia Care • Respite Breaks

## FREECYCLE

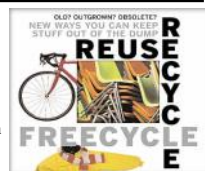
Everything is free and nothing is expected in return.

If you have any offers or wants, please contact me by the 14<sup>th</sup> of each month by phone (01223 813362/07980 423210), e-mail ([junthompson44@gmail.com](mailto:junthompson44@gmail.com)) or drop a note through the letter box (23 Longmeadow).

Please let me know if you would like anything repeating in subsequent issues.

### Offers

Wooden stilts for children, 6 A4 binders, Old children scooter in need of TLC, Panasonic 36" LCD TV still watchable, Old leisure wise pro-fitness exercise bike in need of TLC. Luisa 01223 813793.



# Swaffham Prior Village Hall—October

Monday	Tuesday	Wednesday	Thursday	Friday
AM	AM	AM	AM	AM
		<u>PhysiOptima Pilates</u>	<u>Walking in your shoes</u>	<u>Eastern Counties T'ai Chi for All</u>
		09:00 - 09:50	Dementia care & support	10:00 - 12:00
		Contact Kristin on	10:00 -16:00	Contact Sharyn on
		Tel 07799323867	Contact Mike on	Tel 0774017917
			Tel 07884042590	
		<u>Art History</u>		
		10:10 - 12:10		
		Contact		
		deborah.monteiro@btinternet.com		
PM	PM	PM	PM	PM
<u>WI Meeting</u>	<u>Art History</u>		<u>Slimming World</u>	<u>SF- Fit Stretch &amp; Relax Exercise</u>
19:30 - 21:30 (3rd Monday of each month)	13:45 - 15:45		From 17:30 & 19:00 (Two groups)	17:00 - 18:00
Contact Margaret on;- 01638 744390	Contact deborah.monteiro@btinternet.com		Contact Sharon on	Contact Sarah on
			Tel 07760192638	Tel 075999072008
	<u>SF- Fit Pilates</u>			
	17:00 - 20:00			
	Contact Sarah on			
	Tel 075999072008			
	<u>Village Gardners</u>			
	19:45 - 21:45 (3rd Tuesday of each month)			
	Contact Margaret on			
	01638 744390			

**Don't forget to book your tickets for the Harvest Supper on Saturday 7th October**

**If you're looking to celebrate a special occasion with a party; start a new group or just need more space for an existing one why not keep it local? For availability, prices or to make a booking go to [www.swaffhampriorvillagehall.co.uk](http://www.swaffhampriorvillagehall.co.uk) For anything else contact Philip Blackburn on 07501230256**

## Services in the Anglesey Group of Churches:

Holy Trinity, Bottisham; St Mary's, Quay; St James', Lode;  
St Mary's, Swaffham Bulbeck; St Mary's, Swaffham Prior

### October 2023

#### Sunday 1 October

9am Online service, on Zoom  
10.30am Holy Communion, Bottisham  
Morning Worship, Swaffham Bulbeck  
4pm Village Worship, Quay Village Hall

#### Wednesday 4 October

8pm Compline by Candlelight, on Zoom – a contemplative service

#### Sunday 8 October

9am Online service, on Zoom  
Holy Communion, Quay  
10.30am Family Worship, Swaffham Prior

#### Sunday 15 October

9am Online service, on Zoom  
Morning Prayer, Quay  
10.30am Holy Communion, Swaffham Bulbeck  
Morning Prayer, Bottisham

#### Sunday 22 October

9am Online service, on Zoom  
10.30am Holy Communion (BCP), Swaffham Prior

#### Sunday 29 October

9am Online service, on Zoom  
10.30am Holy Communion, Lode  
3pm All Souls', Lode  
6pm Evensong, Swaffham Prior

#### Every Thursday

10.30am Holy Communion, Lode, apart from 5 October – Harvest Festival

We are currently without a vicar. Please contact Brenda Wilson,  
Churchwarden, on [prior@angleseygroupparishes.co.uk](mailto:prior@angleseygroupparishes.co.uk); 01638 743937

All are welcome to services in any church in the group.

Please be in touch if you would like a lift to a service.

Please check <http://www.achurchnearyou.com/church/7378/benefice> for current information;  
or email [admin@angleseygroupparishes.co.uk](mailto:admin@angleseygroupparishes.co.uk), also the address to request the Zoom link.

## Dates for Your Diary October 2023

Tue	3	Mobile Library, Cage Hill 2.45-3.15pm Chapel 3.20pm-4.00pm 3rd Tues
Wed	4	Bookclub, 6pm, tba [15]
Fri	6	Tower Open Day, 10.30-13.30, St Cyriac's [10]
Sat	7	Harvest Supper, 6pm, VH [9]
Thu	12	PC Meeting, 7.30pm VH [31]
Sat	14	Archaeology at Reach 24, 1pm-3pm [32]
Sun	15	<b>Crier Copy Deadline</b> Archaeology at Reach 24, 10am-Noon [32]
Mon	16	WI, 7.30om, VH [22]
Tue	17	Village Gardeners, 8pm, VH
Thu	19	Mothers' Union, Fassage Hall, Lode, 2.30pm [24]
Tue	24	Councillors Surgery, Reach Village Hall, 6.30-7.30pm [25]

*Numbers in square brackets indicate page number of an accompanying article*

Club	Contact	Tel.	Date	Time	Place
FOSPS			2 <sup>nd</sup> Mon of Term	8pm	Village School
Beavers, Cubs and Scouts	Tim Doe	01223 861083	Variable		
Reading Group	Brenda Wilson	743937	1 <sup>st</sup> Weds of month	8:00pm	Kent House
Village Gardeners	Ruth Scovil	743720	3 <sup>rd</sup> Tues of month	8:00pm	Village Hall
WI	Margaret Joyce	744390	3 <sup>rd</sup> Mon of month	7.30 pm	Village Hall