



The Swaffham Crier

Volume XLVII Number 3

March 2023



Editorial

All set for the Coronation? The bell-ringers are making their preparations and meanwhile we are all invited to book our table at the Village Hall for a grand village tea-party. We missed the last Royal Do (The late Queen's Platinum Jubilee) which was rained off and moved into St Cyriac's at the last minute. But by all accounts a very fine time was had by all, and this do promises to be no different.

Happiness, happiness, the greatest gift that I possess ...a few months ago, our old system was sabotaged by MegaTech whose only ambition in life is to "encourage" us to buy new ones, and a shiny brand new system was duly installed by our loyal IT Department. Despite many efforts on their part to ameliorate the situation, it was everything one has come expect of new systems—full of ghastly bugs, half the facilities missing and those that could be found deftly concealed by some inscrutable "ribbon" 4 clicks away from where you'd expect. BUT, this month, a miracle happened! On booting up the Crier, there was my beloved old publisher. Still working, still here, don't ask, fingers crossed for next month!

The thorny issue of IVY raises its head in this issue (see Keith Carter on page 10). Does it kill trees OR is it only unhealthy trees that are dying anyway that are affected? Keith thinks the former (the ivy is how they got unhealthy in the first place!) and has taken some brilliant photos. But you will notice that it never grows to the top of the tree canopy, thus preserving the tree's access to light. And it certainly does provide a good habitat for wild-life—what do you think? Write and tell us.

Meanwhile there is a new and very welcome venture at the village hall—Mike Donoghue is starting a Dementia Respite Day (see p. 8) to be held once a week with lunch and entertainment, as Mike bills it: "personal, engaging, stimulating and safe" — just the thing, for carers and sufferers alike—we do hope it's a great success.

And it's the Lent Lunches! If you haven't been before, these are delightful events where you can meet other villagers as you consume a delicious bowl of soup—see p. 3, and book now, places are limited.

Caroline Matheson

Regulars

Letters	2
Our Reporter	4
Heating Scheme	6
Bon Mot	8
Village Hall Events	12
Julie's Recipes	13
EAA Ambulance	16
Bottisham Patients	17
Mothers' Union	18
Village Gardeners	18
WI	19
Wicken Fen	20
CROSSWORD	22
Cllrs Cane & Trapp	21
PC Notes	24
Freecycle	26
Church Services	27

News, Views & Reviews

Easter Lilies	2
Ivy	10

What's On

Lent Lunches	3
Quiz Night,	5
Dementia Respite at the Village Hall	8-9
CORONATION TEA PARTY	14

Cover Picture: *Star Gazing Hares* textile by **Debs Cutting**



Letters to the Editors



Dear Editors,

Good OFSTED

Congratulations to all the staff at Swaffham Prior school on their achievement of such a good Ofsted report. It's excellent news and well done for the hard work that was involved in order to improve the rating from 2017 when it was classed as inadequate under the previous head. Praise must go to everybody, staff and pupils but most of all to the headteacher Helen Bartley who has made sure that the school is a welcoming place for visitors and pupils alike.

Ruth Scovil

Easter Lilies

Each year we have had lilies in St Mary's Church at Easter time and, recently, many people have contributed to these in memory of a loved one.

Donations can be made anonymously or with your name and the name of your loved one. A list will then be compiled and placed in church for Easter Sunday. As a guide the Easter lilies will cost £3.00 per stem this year. All contributions will be *very* welcome and will enable us to have a beautiful display.

If you would like to make a donation please put it through Sue Rust's door at 23 Greenhead Road or Ruth Scovil's door at The Oaks, Manor Farm Court, Lower End (the letterbox is in the door at the back of the house!). Please include the name of your loved one and your own unless, of course, you wish to make your gift anonymously.



Ruth Scovil

This Month's Cover

This piece uses free motion machine embroidery on felt and organza with some block printing and gold (real gold!) laminating. More of Deb's artwork can be seen alongside those of 11 other local artists at the PopUp Gallery & Cafe in Swaffham Prior Village Hall over the weekend of 11th & 12th March.

Celia Tyler



St. Mary's, Swaffham Prior

Lent Lunches

in support of

Grace & Flora in our link Parish of Mara, Tanzania

- Wednesday 1 March – Lords Ground Farmhouse (Mandy Kingsmill)
- Thursday 16 March – Goodwin Manor (Kate Muscroft)
- Friday 31 March – 9 High Street (Caroline Matheson)

12.30pm. Soup and a roll; donations, please, for lunch

Limited spaces - booking essential!

admin@anglesevgroupparishes.co.uk or 01638 743864

Heather Johnson, our CMS link missionary at the Rehema project in Mara has asked us to support:

- Grace, who is deaf. She has done a sewing course and would love to have her own machine (c£125) so she can start her own business from home.
- Flora, whose husband has deserted the family. She is struggling to pay for their children, aged 6, 9, 13 and 17, to go to school (cost c£125 – but any amount would help).

Thank you for your support!

From our Reporter at the Parish Council Meeting

What a corker the first *Crier* of 2023 was. I suppose in December it would have been a cracker. As someone said “it represents a real awakening of the village.” All was joy and optimism. It was like the first bunch of snowdrops in early Spring. Just like the snowdrops on the front cover.

Soon we are very likely to have St Cyriac’s again with a full band of bell ringers from the village. The first time for nearly two decades. The Village Hall Committee can’t wait to organise this year’s Feast, brimming with ideas. We won at hockey, and the report on Advent by Candlelight shows this is back to its full glory after the three year Covid absence.



January was also the month when the Rev Sue Giles retired after a decade as our vicar. Perhaps Sue is our most beloved vicar of the 20th and 21st centuries. By chance also at the end of January the Rev. Mark Haworth became Rural Dean of Ely, a position of great responsibility and influence. Mark was vicar here from 1993 to 2003. He was also very colourful and one of our most interestingly contentious vicars. People remember him with vivid and various opinions.

But the really contentious and colourful one was the Rev. Lawrence Fisher, vicar from 1897 to 1934. To get the full picture listen to the Radio 4 programme made on 14th September 1995 of the famous St Mary’s War Memorial Windows. Called “Through a Glass Darkly” it was presented by Patrick Wright. He not only gives an account of the windows but also of the life and times, and of Lawrence Fisher. He interviewed people who knew Fisher well. Their outspoken comments are not only revealing about Fisher but also the active divisions between Church and Chapel at the time. You get a real insight how the village was at that time. It is a fascinating 45 minutes.

Another little bit of history passed away in January, and this was Marcia Miller MBE. She was always involved, and as a resolute fund raiser and promoter of the Red Cross she hosted exciting events in that wonderful early sixteenth century Baldwin Manor. It was always a treat to be greeted there in the right season by her very sociable gobbling turkeys eagerly looking out of their wired windows pleading that we should go and talk to them. I believe Michael Winner once made a film there. Maybe a film buff who could discover details.

In the *Crier* Jude produced the gist of the Sustrans meeting about cycle paths. It looks as if it is going to be quite some time before a cycle path through the village is seriously proposed. So all those people with concerns can relax. Still, about five years ago a member of the public did suggest a cycle path from the village to Mildenhall in the fight against global warming. The PC considered this with its usual caution and sensible scepticism – and after a little while, went “Nah”. But we are going to get the smiling/frowning face speed signs on Mill Hill. Such a joy they are. They humanise us. Just as many years ago the change from “Personnel Department” to “Human Resources” dehumanised us.

At one recent PC meeting a member of the public suggested that someone from

the ECDC recycling team be invited to the Annual Village Assembly to talk about and answer questions about what goes in what bin. Many do not care. But there are a great number who do wish to get it right, and who have genuine questions about some of the details. The PC considered this with “its usual caution and sensible scepticism...”. You can guess the rest!

Meantime we still await the start of the Partygate Enquiry. A little light diversion would certainly not go amiss at the moment.

Alastair Everitt

QUIZ NIGHT

Swaffham Prior Village Hall

7.30 pm Saturday 25 March

Tickets £6 each. To book a table, contact



Jenny Brand
(01638) 742161

or

Lynne Rand
(01638) 741960



Jacket Potato Supper

Bring your own drinks and glasses !!

Proceeds in aid of St. Mary's Church, Swaffham Prior



Heating Scheme

High Street Connections

We have started works on the High Street and Fosters Lane to connect more customers to the heat network.

As there are several properties to connect along this road, we anticipate works taking around eight weeks, starting from 23 February. To ensure safe working conditions for the installation team, temporary traffic lights will occasionally be used. This single set of lights will relocate along the street as connection works take place at each home. These works are due to be completed by the end of April.

Whilst there are temporary traffic lights on the road, short parts of the footway will be unavailable and pedestrians will need to use the path on the other side of the road. Drivers who park on the High Street may find it is not possible to park in their usual location at times.

The Project Team will be in touch with customers individually to let them know about the dates and timings of installations.

We continue to have great feedback from people in the first homes connected to the renewable heat network. Customers are happy with the system and they have been pleased with the quality of the installation. The units operate quietly and residents have found the controls easy to use. The system is keeping them warm and supplied with plenty of hot water - and has done so throughout the winter months.

If you would like to join the heating scheme, or have questions about the works, please get in touch via heatingswaffhamprior@cambridgeshire.gov.uk.

Maggie Pratt

BBC RADIO CAMBRIDGESHIRE

**Know
someone who
deserves some
recognition?**

make a
difference
awards
2023

See full terms and to nominate: www.bbc.co.uk/makeadifference
Entries close on Friday 5th March 2023 at 11pm.

Google “Make a Difference Awards” to find out more, but you only have until March 5th to nominate your candidate.

And another view...

Maggie Pratt confirms that the Heating Scheme will definitely be completed by June 2023. She reports that the system “is keeping people warm” and “they have plenty of hot water”. That is such a relief! There are now 120 houses signed up. As you like facts, please Maggie, will you please say how many are signed from social houses and how many from private houses. That is such a very important fact to know. Looking back, in May 2020 we were told that 166 homes had signed. That was given as a “Hard Fact”! The number just keeps bobbing up and down. Possibly David, the Heating Scheme’s representative on the PC, will tell that august body just how many signatures are from social houses.

The tale gets better. On 10th February our local freelance reporter, Ross Clark from Reach, wrote a very thoughtful article in The Times about Net Zero. Two days later on the 12th February Emma Fletcher and Mike Barker looked at this from the opposite end of the spectrum. This was in ‘The ‘Home’ section of The Sunday Times. It was an interview carried out by Martina Lees. I must say it is the most brilliant sales shot. Enquiries about the scheme will flood in even more. Does the CCC have the staff to deal with them I wonder. The front cover had an aerial picture of the two churches with the caption:

The Heat Pump Village

...where residents decided en masse to dump oil and go green

And what a revealing picture the aerial photograph is. There are 16 houses included in the picture. Only four have signed up. I am happy to be corrected but this is hardly “hundreds of residents” and is certainly not “en masse”.

Inside were a full two pages setting out the cause. To say that it is a trifle one sided could be the understatement of the year. There were times when I wondered whether, as with Prince Harry, memory/mind was in conflict with objective facts. In due course there will be a broad discussion and analysis of all aspects after the project is completed in June. Meanwhile may I be allowed to raise a couple of small minor points about some of the reasons given for changing from oil.

One of their concerns is that “when your tank is empty”.... “you can’t get one litre, you have to get 1,000 litres”. Surely there cannot be any oil supplier who will not sell 500 litres, or less. What is more interesting is why anyone would want just one litre of heating oil?

And this is where the creative minds of the village can join in. There is a bottle of wine for the person who sends in the best reason for buying just one litre of burning oil. It can be witty, useful, serious, ingenious or whatever. Send them to the Editors who will select the winner. All will be published under the name or initials as people wish. Emma and Mike can also try if they want to.

Incidentally Martina was told that “150 or so” households have signed. An encouraging jump forward from Maggie’s figure of 120. It is getting closer to the 2020 figure. Just keep bob, bob, bobbing along.

But before bothering with that, let’s resolve the one litre question first. The wine awaits.

Alastair Everitt

Open Day 9th March from 10am to 4pm

Call in for a chat and a free tea.

Swaffham Prior Village Hall

The Dementia Respite Provision was developed as it was evident family carers were finding it difficult accessing respite and having the opportunity to have some down time and re-charge.

As the Respite Team have years of experience running community hubs and supporting vulnerable adults, they decided to set up the Respite Provision.

The Respite Provision is personal, engaging, stimulating and safe, so that the family carer can feel confident their loved one will be in a safe environment and will have a meaningful day.

The maximum number of guests at any time is 8, this is so that we can ensure we keep the personal touch.

The Respite Provision runs with a fully qualified Psychotherapist who is also qualified to level 5 in Health & Social Care.

The person with dementia our guest can stay with us from 1 hour up to 6 hours. If our guest is staying for lunch we just request they bring a packed lunch with them, however all drinks and snacks will be provided for free.

We aim for lunch times to be stimulating and enjoyable by promoting social interactions as we encourage all our guests and visitors to eat together.

Should the family carer wish to stay with us they are very welcome to do so and can enjoy free drinks and snacks too.

Mike

BON MOT NUMBER 136

“In my experience, in my personal life and during my time as a philosophy lecturer at university, the majority of men are kind, thoughtful, self-aware, interested and loving, as friends and as partners.

I suspect that most women would say the same.”

Nina Power (1981? –)

WALKING IN YOUR SHOES MOBILE THERAPY SERVICE

Open Day 9th March 2023 come and meet the team at
Swaffham Prior Village Hall from 10am to 4pm

Psychotherapeutic Counselling

(In the comfort of your own home)

Dementia Respite Provision

(Swaffham Prior)

Join us for free tea and biscuits and have a chat.

Affordable *Accessible *Available



MOBILE THERAPY SERVICE

Psychotherapeutic Counselling

Tel: 07884042590

Email: walkinginyourshoesmts@gmail.com

Flexible Appointment Hours

Concessions Available

DEMENTIA RESPITE PROVISION

Tel: 07884042590 for our hourly rate

Email: walkinginyourshoesmts@gmail.com

Location: Swaffham Prior Village Hall, High Street, CB25 0LD

Every Thursday between 10am and 4pm

Concessions Available

www.walkinginyourshoesmts.com

IVY

I think that I shall never see
An ivy lovely as a tree
Indeed, unless the ivy falls
(Soon) I'll never see a tree at all.
(*Apologies to Ogden Nash*)

John Wyndham, in his 1951 novel 'The Day of the Triffids', created in these deadly, mobile plants equipped with - if my memory serves – lethal, poisoned whip-lashy things. I don't want to compare ivy with triffids. Ivy isn't like that at all. Ivy is unflashy and insidious and kills not with a sudden whip but with a slow, tight embrace. An ivy plant is therefore far more dangerous than a triffid. I expect we'd see a triffid coming. If a group of them, up to no good, were to saunter down Lower End casually cracking their whips we would not find it difficult to spot them. Yet ivy



grows there, unobserved and in plain sight, doing its breath-taking, slow suffocation.

OK, triffids kill people whereas ivy 'only' kills trees. Let me invite those of you having this thought to inspect your anthropocentricity. Check your privilege.

Ivy was all over our house when we bought it, stopping doors from opening properly, shouldering drainpipes from the walls, wriggling its way in, under roof and through crack. It covered the garden with about a metre of cemetery-dark green. When removed, vestiges of a nice garden were to be found – plants deformed and enfeebled by their diabolical treaty with the ivy.

Ripping it out, when we got to the boundary we discovered several trees that had played host to ivy stems as thick as fire-engine hawser. Dead trees, losers in the battle for sunlight, one hand tied by deciduousness, fighting the evergreen enemy. It was war, and the goodies were losing. From that point on, I began to see ivy everywhere – on the fen, in the village, on groups of road-side trees hunched under its

weight.

It feels like an invasion, triffid-like but so much cleverer. These creepers have surely also been introduced by aliens, but are going about their takeover with skill and subtlety, a few metres at a time. People should be warned! Just as with inexorably rising seas, these plants will engulf all, most certainly beating the seas to it. England's will be a landscape of monoculture. So here is a self-contained 'On the Other Hand' article offering a fair balance of opinions.

Because I was keen on writing a fair, even-handed piece about these beastly tree-killing creepers, I typed the words 'IVY INVASIVE PARASITE' into my search engine. The resulting pro-ivy case, as I summarize it for your convenience, is as follows.

Pro-ivy groups, mainly from ecological organisations, claim that trees that succumb to ivy infestation are usually weak and under stress, and so are on their way out anyway. This seems heartless at best. That the infestation *is* the stress has not occurred to those advancing this argument, who would mostly like to blame the human race. I'm pretty sure climate change is to blame. It usually is.

'The tangle of branches entwining trees and the dense mass of bushy leafage provides perfect sheltered spots in which birds can construct their nests', we are told, and come autumn the ivy flowers 'act as a veritable mecca for insects.' I would just highlight the words 'infestation' 'entwining' 'tangle' and 'dense mass' and ask the reader: are these attributes we want to encourage in our environment?

Ivy overcomes the 'host' – surely ascribing consent where none was solicited – mostly by means of robbing it of the sunlight it requires. Those insects whose heads in the ivy are also responsible for disease and 'insect problems', even the pro-ivy team admits.

The damned

If you cared about a tree, surely you would ensure the ivy did not win. So why are so many trees in and around Swaffham Prior so deeply in its clutches? Maybe it's explained by corporate ownership. Unchecked, for whatever reason, soon enough all that is vertical in our lovely area will be rendered flat, engulfed and uniform. What can we do to stave off the swamping of all our vegetation by this green menace? Here's an idea:



The Damned



Keith Carter

Swaffham Prior Village Hall

Looking to join an exciting new group in March?

How about one of the regular groups that meet each week listed below;-

Monday	Tuesday	Wednesday	Thursday	Friday
<p>AM</p> <p><u>Tai Chi & Tea for All</u> 10:30 - 12:00 - Contact Fara on 07919857617</p>	<p>AM</p>	<p>AM</p> <p><u>PhysiOptima Pilates</u> 09:00 - 09:50 Contact Kristin on 07799323867</p> <p><u>Art History Class</u> 10:00 - 12:00 Contact deborah.monteiro@btinternet.com</p>	<p>AM</p>	<p>AM</p> <p><u>Eastern Counties Tai Chi for All</u> 10:00 - 12:00 Contact Sharyn on 0774017917</p>
<p>PM</p> <p><u>Tai Chi for Beginners</u> 17:30 - 19:00 Contact Fara on 07919857617</p> <p><u>WI Meeting</u> 18:30 - 21:30 Contact Margaret on 01638 744390 (3rd Monday of month)</p>	<p>PM</p> <p><u>Art History Class</u> 14:00 - 16:00 Contact deborah.monteiro@btinternet.com</p> <p><u>SF-Fit Pilates</u> 17:00 - 19:00 Contact Sarah on 075999072008</p> <p><u>Village Gardeners</u> 19:45 - 21:45 Contact Margaret on 01638 744390 (3rd Tuesday of month)</p>	<p>PM</p>	<p>PM</p> <p><u>Slimming World</u> two groups, @ 17:30 & 19:00 Contact Sharon on 07760192638</p>	<p>PM</p> <p><u>Keep - Fit (to music)</u> 17:00 - 18:00 Contact Sarah on 075999072008</p>

Don't forget the Prior Art Group Exhibition on Saturday & Sunday 11th & 12th March and the village Quiz night on Saturday 25th March!

If you're looking for a place to celebrate a special occasion with a party why not check out the village hall website - www.swaffhampriorvillagehall.co.uk.

Julie's Recipes for March

Spring miso soup

- 3 tsp of good quality vegetable bouillon powder
- 800ml boiling water
- 4 asparagus spears or spring onions, sliced
- 2 tbsp white or red miso paste
- 1 tbsp sweet rice wine, (mirin)
- 1 tbsp soy sauce
- 200g tofu, cubed_

1. Mix the bouillon powder with the boiling water in a saucepan and stir well.
2. Add the sliced asparagus and simmer for 3 mins.
3. Place the miso paste into a small bowl and add a spoonful of the broth and whisk to get rid of any lumps, when smooth, slowly pour the mixture into the saucepan, whisking constantly.
4. Add the mirin, soy sauce and tofu, heat through gently without boiling.
5. Add a little chopped chilli if desired and serve into bowls.

Serves 4

Pasta with purple sprouting broccoli

- 1 kg purple sprouting broccoli, trimmed
- 1 medium sized red chilli
- 2 cloves of garlic, peeled
- 1 small tin of anchovy fillets in olive oil, drained
- Good quality olive oil
- 350g pasta fusilli or penne
- 4tbsp freshly grated parmesan or pecorino cheese
- Salt and pepper

1. Put on a large pan of water on to boil with a little salt, cook the pasta until it tender but al dente.
2. Prepare the broccoli to reasonable sized bits, chop the chilli, garlic and anchovies finely.
3. In a separate pan warm 4 tablespoons of olive oil and gently fry for a minute or 2 and then add the broccoli. Season with salt and pepper.
4. When the pasta is cooked, transfer a small ladle of the cooking water to the broccoli mix and continue to cook until tender.
5. After the pasta has been drained, add the broccoli mix with another 2 tablespoons of oil and the grated cheese. Mix well together and serve immediately.

Serves 4



Swaffham Prior celebrates the Coronation of HRH King Charles III

please come along to a

Village Tea Party

in Swaffham Prior Village Hall on the afternoon of Sunday 7 May, 2-5pm

We will have a limited number of indoor tables for up to 6 people for pre-booking, or sign up to sit on the grass outside bringing along your own tables, chairs, blankets etc (no wet weather alternative; sorry!)
Space is limited – first come, first served – please book by 25 March.

Please bring everything you need for afternoon tea, including crockery, cutlery, cups, glasses etc and bags for rubbish! We look forward to seeing imaginative table or picnic decorations and appropriate costumes, hats, crowns etc!

As befits a village event, there will be silly games and quizzes for all the family!

Please note: this is an informal gathering, arranged by volunteers. Attendees participate at their own risk and the person booking the table or pitch agrees to take overall responsibility for their guests.

Please be in touch to reserve a table or pitch by **Saturday 25 March 2023**

Email the following information to: admin@angleseygroupparishes.co.uk
or return this form to 1 Mill Hill, Swaffham Prior
marking your message or envelope: **Coronation Tea Party**
(this is important as your message/envelope
may go astray if this title is not used!)

Booking name:

Address:

Telephone:

Email:

Number in party:

We would prefer to be located:

**ONLY INSIDE THE VILLAGE HALL
ONLY OUTSIDE ON THE GRASS
EITHER**
(please delete as appropriate)

Please note: this is an informal gathering, arranged by volunteers. Attendees participate at their own risk and the person booking the table or pitch agrees to take overall responsibility for their guests.



East Anglian Air Ambulance

As always, space available for articles is at a premium and the need to balance information, news and requests for support is omnipresent.

Now into our 23rd year of saving lives, we have endeavored to keep people informed of some of the amazing work accomplished, some of the lives saved, improvements made to our helicopters, kit and level of service. Inevitably much more could, and perhaps should, have been written to keep all of our supporters informed. The budget to cover operations, on the ground and in the air, for 2023 is around £17.5m ! Not a small figure toward the raising of which many supporters, of most ages and most walks of life, give of their time, expertise and resources - people like YOU. Whatever your station in life, please do contact EAAA to join The Team who enjoy being a part of something good, indeed, something exceptional. Find out about our personal challenges - Trek 24 and Only The Brave (we are busy working on new events and dates for 2023) - which together raised over £170,00 ! Last year, 'Gifts in Wills' funded more than one in four of our missions whilst our weekly lottery covered around 50% of our costs !

So, wherever you are reading this, East Anglian Air Ambulance is equipped, expertly manned and ready to turn out whatever the weather to help you in your hour of need! Please do help us to maintain, and improve, our service to all who might need it.

To join our lottery, suggest ideas for fundraising or offer to help, please contact EAAA on 03450 66 9999 or via info@eaaa.org.uk

Oh, and when you come across one of our red collection boxes (even if you are paying by card) please dig around for a cash contribution. Thank you, again, for supporting East Anglian Air Ambulance.

Michael White



News from Bottisham Medical Practice

Patients' Participation Group

Staff: A very experienced GP has joined the Practice following the retirement of Dr Stanton. Dr Shelley will be working Tuesdays to Fridays. Jo Graham has been appointed as operations manager for the practice who replaces Helen our previous assistant to the practice manager.

Appointments: A gentle reminder that appointment slots are for 10 minutes per patient. If you feel you have more than one problem you may request a double appointment. Please refrain from discussing medical problems of family members within your own appointment if the appointment is not booked for this reason, one appointment is required per patient. The British Medical Association recommendation is for 25 patient appointments per day, but our doctors exceed this daily.

Weekend and Evening Appointments: These can be booked through our Practice for routine appointments, though are only available at other local surgeries. Please see website <https://www.cambsgpnetwork.nhs.uk/gp-enhanced-access>.

The Patient Participation Group: We are happy to have new members to join the committee, all patients of this Practice are eligible. Please contact our chairman as below to find out more information and how you can be involved

Regular Meetings: Next meeting is Wednesday March 22nd 2023 at 1.30pm. If you wish to join our Zoom meeting please email our chairman at s.j.gilson@btinternet.com who will send you a meeting invite.

Annual General Meeting: April 26 at 1pm on Zoom when we hope Dr Shackleton will be free to speak. If you wish to join in please email our chairman as above.

"NAAFI Break"

ALL veterans are welcome to come along and meet likeminded veterans 10 till 11am at Anglesey Abbey Cafe. We meet on the first Wednesday of each month. Next date to meet: 1 March 2023. Come along, for a good old chin wag, meet new faces and feel connected within your local community. Gary looks forward to welcoming you. He will wear a grey Help for Heroes T Shirt.

***Bottisham Medical Practice
Patients Participation Group***



Mothers' Union

Our programme for 2023 began with our joining with the regular Thursday morning Holy Communion Service at St. James' Church, Lode on the 19th January. This coincided with Revd Sue Giles last service in Lode before her retirement. During the service Revd. Sue enrolled new Mothers' Union member, Maggie Field, and presented her with membership card and badge. Following the service, Mothers' Union committee members served a soup lunch for members and congregation to celebrate Sue's retirement and wish her and Jonathan a happy retirement in York. We will not only miss Sue as our vicar, but fellow MU member also!

The previous week a number of our members attended the visit to Lode Church by Heather Johnstone, Mission Partner from Church Mission Society, UK. Heather gave feedback and latest updates on The Rehema Project she runs in Musoma, Tanzania, which supports women and children in crisis. Heather brought along some beautiful items made by the Rehema Craft ladies. Proceeds from the sale of these items help to fund the project. For more information visit the website <https://churchmissionsociety.org/people-in-mission/heather-johnstone-tanzania/>

Ann Langran



Our meetings usually take place on the third Thursday of the month, at 2.30pm in Passage Hall, Lode. On 16th March we will be holding our Spring Social with Bring and Buy Stall. You are most welcome to come and join us.



VILLAGE GARDENERS

Nigel Start, from Gt. Wilbraham, gave us a talk about the challenges to gardeners, well everyone, of climate change and what he called a survival guide to gardens, especially in East Anglia- the driest part of the country.

Climate change, with its total disturbance of seasonal patterns- intense rain, rapid rise in temperatures along with rapid fall of temperatures, droughts, floods, hurricane force, winds, often in areas unused to extremes of any kind.

It is undoubtedly going to get drier, so looking after the soil, is crucial. Water

capture in the biggest containers you can manage; feed the soil with organic matter and mulch the soil at every opportunity. These will all help maintain the moisture in the soil. Gravel drives and permeable surfaces in the garden also help.

Planting more perennials, which have deeper roots than annuals, is the way ahead as they require much less water. Autumn planting too, enables plants to establish stronger root systems, before growth the following year.

Ever greens- Ivy, Holly, Cotinus, are winners, along with spring bulbs, wall flowers, primroses, salvias Buddleias, Potentillas and Philadelphus, though with the cold and lack of rain this winter, some really hardy plants have given up the ghost.

Some plants are still going to need frequent watering, but we might all like to think about giving up our luscious green lawns.

Vegetable growers- Nigel now does this- uses black permeable plastic to cover unused soil, which retains moisture and completely suppresses weeds.

Encourage insects and pollinators, wild patches, longer grass and a pond will encourage frogs, dragon flies and hedgehogs- as long as you give them a ramp!

We had lots of new members at this meeting, but always welcome more.

Our next one is on Tuesday 21st March, in the village hall at 8.00pm- when Pam Bullivant, is going to be talking about the National Garden Scheme.

Margaret Joyce.

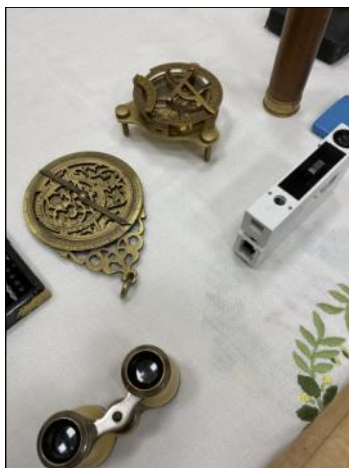


The Swaffhams' WI

In the February meeting of The Swaffhams' WI we were delighted to welcome Alison Giles from The Whipple Museum in Cambridge. Alison brought to the meeting her top 10 (easily transportable) scientific objects, which she used to illustrate the history of science starting with the ancient abacus, which dates back to the 1300s and ending with the modern pocket calculator. Robert Whipple, who collected more than 1000 scientific instruments presented his collection to the University of Cambridge in 1944.

As Alison explained to us Robert had an eye for pretty things and therefore his collection contains many ornate and beautifully crafted instruments.

Interlaced with the history and importance of each object, Alison wove stories telling of social history, intrigue and gender imbalance. The Whipple museum is still adding to its collection today and their current focus is on trying to find scientific instruments used or designed by women as well as trying to move away from the European focus. It was a delight to hear Alison talk and The Whipple Museum is certainly on my list of places to visit in Cambridge. The next meeting is the AGM on Monday 20th March.



Kate Muscroft

News from Wicken Fen Nature Reserve

There's a lot to look forward to in 2023 and we are happy that the forthcoming BBC documentary Wild Isles, presented by Sir David Attenborough, is going to shine a light on Britain's spectacular wildlife. Here at Wicken Fen, we're still seeing harriers and owls on the reserve, and it's been lovely to see more people coming to the reserve to get a glimpse of wildlife. As the temperature warms up and spring is on the way, we'll be seeing the return of spring migrants: warblers and cuckoos; and early emerging dragonflies and butterflies.

Outdoor activities at Wicken Fen: Boat trips and bikes are back!

From 18 March onwards, you'll be able to go on a boat trip along the Wicken Lode waterway or hire a bike to explore the reserve. It's great to get out in nature and enjoy different ways of getting out into the Fen. You can find out more on our website or call our friendly Visitor Centre team for more information on 01353 720274.

Easter at Wicken Fen

Our popular Easter trail through Sedge Fen and the Woodland Walk will be available between 1 and 16 April from 10am daily. The price of the trail is £3 per child and includes a chocolate prize.

We're also offering bookable Owl Pellet Dissection sessions on 4 April, and Easter crafts drop in events on Thursday 6 and Tuesday 11 April.

Details of all these activities are available on our website.

For the latest reserve information, please visit our website www.nationaltrust.org.uk/wicken-fen.

Details of our events can be found on our website at <https://www.nationaltrust.org.uk/wicken-fen-nature-reserve/whats-on>





East
Cambridgeshire
District Council
www.eastcambs.gov.uk

From our District Councillors
Charlotte Cane &
John Trapp

Council will meet on 21 February to approve the budget for the year from 1 April 2023. The proposal is to freeze Council Tax for the year and balance the budget with £2 million taken from the savings reserve. The plans show a further £2.2m to be taken from the savings reserve in 2024/25 and an increase in Council tax of £5 (the maximum allowed without a referendum). The savings reserve is predicted to have run out by 31 March 2026, leaving a budget deficit of £4.8m even if Council Tax is increased by £5 each year.



At the same meeting the Council will consider a request from East Cambs Street Scene for an additional fee of £500,000 for the year from 1 April 2022 to 31 March 2023. This is because the company has already spent more than it had budgeted and forecasts that they will make a loss for the year of about £500,000 if the Council doesn't agree to pay the extra £500,000. As ECSS is a wholly owned subsidiary of East Cambs, we have little choice but to pay the extra money. We are obviously unhappy with paying extra, especially when ECSS is still not delivering its agreed service levels. And we are deeply concerned that Council does not seem to have been informed of these financial difficulties until it is too late to take any mitigating actions.

We have had reports that some residents have not had any black bin bags delivered; please contact the Council or us if you have not received your black bin bags.

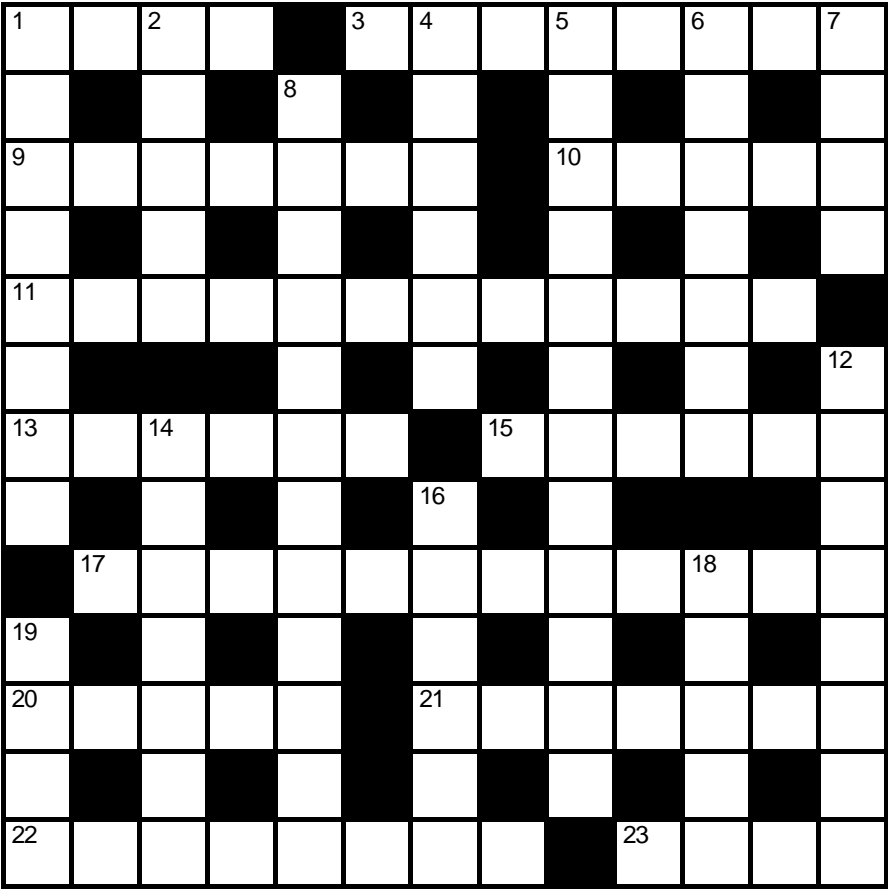
The meeting will also consider adopting the Neighbourhood Plan for Swaffham Bulbeck, which aims to protect the 'diversity, community spirit, distinctive and attractive built heritage and green spaces...achieve carbon-neutrality, promote biodiversity and enable proportionate development.'

Our March Councillors' Surgery will be on Tuesday 28 March at Reach Village Hall, 6.30—7.30pm. Or you can contact us directly at any time – charlotte.cane@eastcambs.gov.uk, 07976 607512; john.trapp@eastcambs.gov.uk, 01223 812120

Crossword Number 203

Compiled by CALVIN

This month’s puzzle is a simple cryptic crossword. Send your answers to the editors by 18th March 2023. The sender of the first correct solution out of the hat will be awarded a *Winner’s Certificate*. Emailed solutions are acceptable but



Name:.....

Address:.....

.....Tel:.....

Across

- 1 Covering for priest, manage to form a joint (4)
- 3 Swimsuit, perhaps, which is unbroken... (3-5)
- 9 ... garment, with physical therapy exchanged for cat (7)
- 10 Jargon in commoners' language (5)
- 11 Sell fur which is patchy, and wire found in cat litter (7,5)
- 13 Drop dime to disembowel tangled bends (6)
- 15 Quiet cat at the end of her hunt? (6)
- 17 With a hole in the head and no passport, friend moves in an undulating manner (12)
- 20 Explanation for absence of squib I later found inside, pointing West (5)
- 21 Bouncy start to year after next four months, perhaps? (7)
- 22 A crowd surrounds a pig made of dark wood (8)
- 23 Nail scratches centre of loaf (4)

Down

- 1 Nerves found in unfriendly paws (4,4)
- 2 Sound of satisfaction from pussycat and her companion, missing ancient city as part of the hunt (5)
- 4 Going unclothed around hell, mostly senseless (6)
- 5 Do sort parcels, perhaps, after a hundred go missing - they're a way of sending money (6,6)
- 6 Entails confusingly 21 protein (7)

- 7 Block of cheese, without rind, perhaps? (4)
- 8 Wailing Wall, we heard, is held by food providers (12)
- 12 Unknown in sheep with coloured coat, being close to tears (4-4)
- 14 Birth is messy for shorthair breed (7)
- 16 Smash pie soon after removing drug (toxin) (6)
- 18 Beneath this light, pussycat danced backwards in Iran, ultimately (5)
- 19 Wife, out on a limb, is not too hot (4)

Solution to crossword no. 202

I	C	E	C	A	P		T	H	E	O	R	I	S	E
	H		R		R	E		S		A		A		
N	I	N	E	T	E	E	N		S	W	I	T	C	H
	N		E		C		F		E		N		R	
H	A	N	D	M	E	D	O	W	N		S	P	A	T
						D	L		C		T		M	
S	P	O	T	W	E	L	D		E	X	O	C	E	T
	I		E								R		N	
A	S	Y	L	U	M			E	N	O	R	M	I	T
	T		E		I		M		U					
P	A	N	G			L	O	B	S	T	E	R	P	O
	C		R		I		A		G		A		R	
T	H	W	A	R	T		S	U	R	G	I	C	A	L
	I		P		I		S		O		S		T	
T	O	P	H	E	A	V	Y		W	E	E	D	E	D

We congratulate Robert Nunn, the winner of last month's competition, who will receive his prize certificate from the editors. An honourable mention goes to Dainin O'Dowd..

Notes from the February Parish Council Meeting

Cllr Covill chaired the January meeting of the Swaffham Prior Parish Council, attended by 5 Parish Councillors and 4 members of the public.

Public participation for items on the agenda

A member of the public spoke on the memorial testing and expressed dissatisfaction with the way it had been carried out and surprise and dismay at the numbers laid down.

A second member of the public said that the PC needed to support the Clerk and AD who had carried out the testing after training and on the orders of the PC.

A third member of the public noted that gratings on the streets were getting blocked by leaves, mud etc due to the lack of street cleaning. It was noted that anyone can pass the name of a street in need of cleaning on to East Cambs.

Results of the cemetery memorial marker checks.

The meeting was closed to allow members of the public to take part in the discussion. The results of the checks were noted. The PC thanked the Clerk and AD for undertaking training and the checks and confirmed that the Clerk to respond to emails regarding the checks from a number of families.

Reports - East Cambs District Council -Cllr Charlotte Cane attended.

Cllr Cane noted that the aim of ECDC was to have no rise in Council Tax, but that there was a hole in the budget that would become obvious at some point. Cllr Cane believed the Audit Committee to be toothless. Cllr Hart asked why this was? Cllr Cane clarified that the terms of reference made it so in her opinion and that the terms of reference were set by elected District Councillors. Cllr Cane also noted that officers cannot be invited by the Audit Committee to discuss issues and that question have to be pre-submitted and are not always answered.

Cllr Cane noted that the Risk Register showed ECSS as unlikely to fail, but that in February ECSS asked for an additional half million pounds to cover additional costs. Cllr Cane spoke about the Greater Cambridge Partnership consultation on the Eastern Gateway. A public drop in for this is to be held on 15th February and 1st March. A-B1102 are preparing a response. Cllr Cane noted that a campaign to move the Newmarket Road Park and Ride site outside of the ring road, potentially to a site at Quy would be worthwhile as the GCP will look at it if there is enough public feedback. Cllr Cane noted that Reach PC had written to Highways regarding the state of local roads and encouraged Swaffham Prior PC to do the same.

Letter to the Highways Agency regarding the current state of local roads.

After discussion, it was decided that a letter/email should be written by the Clerk to Steve Cox regarding Great Fen Road, Headlake Drove and Little Fen Drove, which have problems with subsidence after the dry summer. Additionally, the roads were built in the 1940s for lighter traffic in every sense, but part now have up to 20 lorries a day, as well as farm traffic and some delivery drivers refuse to deliver to houses in the fens due to the poor road conditions.

Report on Heating Scheme

A report was emailed in by Cllr David Greenfield.

- 78 Heating Supply Agreements have been signed and there was commitment from 50 Housing Association properties to connect to the heat network.
- In addition to these, 44 pre-installation surveys have been carried out to finalise the details of the heat installation.
- 6 properties have been fully connected.
- External installations have started on 8 properties.
- Pre-installation surveys are due to start on Sections D (Lower End to Rogers Road) and E (Mill Hill to Fairview Road) by the beginning of March.

Cllr Kent-Phillips noted that 3 holes had been dug on Greenhead Road and 3 on Tothill Road and that the delay on connecting the High Street properties had led to householders having to buy more oil.

It was noted that the Housing Association residents had the option of refusing to join the Scheme so the final take-up may not be all 50.

Cllr Kent-Phillips noted that the funding for the scheme not covered by government grants was covered by a commercial loan taken out by CCC and to be paid for by take-up of the Scheme.

Clerk's Report

- The push tap on the cemetery water supply has been replaced and the original tap is to be fixed so as to provide a back-up.
- A-B1102 bus route proposals were discussed at a meeting attended by a number of Parish Council representatives. The need of PCs to work together was emphasized; with this in mind, A-B1102 were invited to give a presentation to the PC at the March meeting and the idea was floated of the presentation also being given at the Annual Parish meeting to gain more widespread support from people.
- The Clerk noted that an accident had occurred on Mill Hill on 6th February, where a Mick George went into the back of a van that had stopped to allow a car to turn right into their drive. No-one was injured.
- The Clerk noted that the regular handyman for the PC had retired and so there were a number of small jobs in need of doing, with no-one to do them, such as maintenance of some of the benches around the village. It was suggested that the Clerk should contact Reach PC to see if their handyman could cover Swaffham Prior as well.
- The Clerk mentioned the drawbacks of using the house landline as the PC phone number and it was agreed that Clerk could look into purchasing a PC mobile phone.

Parish Councillors' Reports

Cllr Gynn noted that the wooden path edge in the cemetery needed repairing again.

Cllr Kent-Phillips noted he'd been asked to check the defibrillator battery as some had gone flat during the cold spell; it was still fully charged.

Cllr Durrant noted that the Village Hall would be having a car and motorbike display as part of the Village Feast and requested use of the car park; the PC agreed.

Cllr Covill noted that the trees lining the Village Hall driveway needed to be trimmed back.

Open Question Time

A member of the public suggested that nominations for the Gay Bulleid award be taken so that it could be awarded again at the Annual Parish Meeting.

A member of the public noted that the main cemetery gates were in need of maintenance and volunteered to carry it out.

If anyone would like any further information on any of the above items, please contact the Clerk.

The next monthly Parish Council meeting will be on Thursday, 9th March 2023 starting at 7.30pm at the Village Hall. All are welcome to attend.

Jude Griffiths – Clerk to the Parish Council.
Tel 745 106, Email swaffhampriorclerk@gmail.com

FREECYCLE

Everything is free and nothing is expected in return.

If you have any offers or wants, please contact me by the 14th of each month by phone (01223 813362/07980 423210), e-mail (junthompson44@gmail.com) or drop a note through the letter box (23 Longmeadow).

Please let me know if you would like anything repeating in subsequent issues.



Wanted:

2-drawer filing cabinet for the Parish Council (they had a 4-drawer one but need a smaller one). Fran 01223 813016

8ft x 6ft (or thereabouts) metal framed greenhouse to replace our rapidly decaying structure...don't mind dismantling.

Services in the Anglesey Group of Churches In March 2023

Wednesday 1 March

8pm CbyC, on Zoom

Sunday 5 March

9am Online service, on Zoom

10.30am Holy Communion, Bottisham

4pm Village Worship, Quay Village Hall

Sunday 12 March

9am Online service, on Zoom

Holy Communion, Quay

10.30am Family Worship, Swaffham Prior

Sunday 19 March

9am Online service, on Zoom

Morning Prayer, Quay

10.30am Holy Communion, Swaffham Bulbeck

Morning Prayer, Bottisham

Sunday 26 March

9am Online service, on Zoom

10.30am Holy Communion (BCP), Swaffham Prior

Every Wednesday in Lent (8-29 March)

6pm Compline, Lode

Every Thursday

10.30am Holy Communion, Lode

We are currently without a vicar.

Please contact Brenda Wilson, churchwarden on prior@angleseygroupparishes.co.uk;

01638 743937

All are welcome to services in any church in the group. Please be in touch if you would like a lift to a service.

Please check <http://www.achurchnearyou.com/church/7378/benefice> for current information;

or email admin@angleseygroupparishes.co.uk, also the address to request the Zoom link.

Dates for Your Diary March 2023

Wed	1	Lent Lunch, 12.30pm, Lords Ground Farmhouse [3]
Thu	9	Dementia Respite Open Day, 10am-4pm, VH [8] PC Meeting, VH, 7.30pm [24]
Thu	16	Lent Lunch, 12.30pm, Goodwin Manor, 12.30pm [3] Mothers Union, Fassage Hall, Lode. 2.30pm [18]
Mon	20	WI AGM, 7.30pm
Tue	21	Village Gardeners, 8pm, VH [18]
Wed	22	Crier Copy Deadline
Sat	25	Quiz Night, 7.30pm, VH [5]
Tues	28	Cllrs Surgery, Reach Village Hall. 6.30-7pm[21]
Fri	31	Lent Lunch, Kent House, 9 High St, 12.30pm [3]

Numbers in square brackets indicate page number of an accompanying article

Club	Contact	Tel.	Date	Time	Place
FOSPS			2 nd Mon of Term	8pm	Village School
Beavers, Cubs and Scouts	Tim Doe	01223 861083	Variable		
Reading Group	Brenda Wilson	743937	1 st Weds of month	8:00pm	Kent House
Village Gardeners	Ruth Scovil	743720	3 rd Tues of month	8:00pm	Village Hall
WI	Margaret Joyce	744390	3 rd Mon of month	7.30 pm	Village Hall