



The Swaffham Crier

Volume XLIV Number 1

January 2020



Editorial

THIS IS THE TIME OF THE YEAR when we say a Big Thank You to all involved with the production of the Crier.

Our Distributors (but we urgently need more! See Wanted), with special thanks to our Distribution Manager Pam Waters, who with the kind assistance of her husband Ralph has managed to keep the distribution going even with a broken hip.

Our loyal Advertisers (we are entirely self-funding) and our brilliant Advertising team, Pat and Peter Cook, who despite also being beset by health problems this year, have still managed to do a magnificent job

Our Editorial Team, where we see in this issue that Our Reporter is his usual controversial but nevertheless *immaculately accurate* self, and our many correspondents and contributors (but we always need more! Get in touch with the Editors if you could help), with special thanks this year to Sue Wade for many brilliant photos and timely contributions

And lastly, our Crossword Team! Nibor, Ounce and Bywell, take a bow. No, they don't come from some Web outfit, they're real people, and our crossword is currently enjoying great popularity. Although this month's may be so tricky that if you succeed you're practically guaranteed that prize meal ticket courtesy of our kind sponsors Steve and Karen at the Red Lion. A great many thanks to them, they'll be much missed!

The Memorial Windows Centenary was packed and so fitting and moving (see *Letters*, *Centre Pages*, *Cover*). Many congratulations are due to the organisers and our Headteacher—it would appear that David Hockney's window in Westminster Abbey has got some serious competition! Henry Brown is now 97 and arranging his funeral (see *Letters*). It will definitely have a Bugler and a Hawk Jet fly-past but we may have to wait around a bit more for it. Meanwhile, the wild-flowering verges are going ahead: that's to say, a load of broken brown stems with seedy bits on top—remarkably like our garden really!

Caroline Matheson

Cover Picture: *Memorial Window by The Children of S Prior C of E Primary School*

Regulars

Letters	2
Our Reporter	6
Julie's Recipes	10
Cambridge Fire & Rescue	12
Ophir	12,19
Mothers' Union	18,30
Let's Dance	18
Red2Green	10
Wicken Fen	20
Clhrs Cane & Trapp	21
CROSSWORD	22
PC Notes	24
Bon Mot	27
Renew	28
Freecycle	29
Church Services	31

News, Views & Reviews

Boxing Day Hockey	8
Community Heat Project	9
Cicero's Austerity	13
Surgery opposes OAP village	14
Children's Memorial Window	16

What's On

Coffee Morning	8
Keeping it Regal	11
Feast Your Eyes	15
Spring Jumble Sale	18

Wanted

Crier Help!	13
-------------	----



Letters to the Editors



Dear Editors

The Denny & its Travellers and Swaffham Bulbeck

Of all the helpful advice one can offer to people, one of my favourites is “Don’t get your knickers in a twist” This applies to both men and women., I say this in response to the letter from Diane Bayliss in the December *Crier*.

Well, Bulbeck certainly got it knickers in a twist” over my report of our Parish Council meeting on Thursday, **12th September**. Please note the date. The *Crier* through production difficulties was a little late and did not appear until 8th/9th October. No-one in Bulbeck had seen it by then. At some point after this Mr Ling wrote his letter to Bulbeck PC, obviously objecting to John Trapp’s views. Everyone is entitled to disagree just as Mr Ling did.

But, apart from one statement to which I shall refer later, everything I reported in my report of **12th September** was true, including the fact that the Travellers had returned on Tuesday 10th September. I could not report on events after 12th September, after which Bulbeck PC and village held a number of meetings and took further action, all of which occurred before they the offending *Crier* came out.

I suggest that, as soon as Mr Ling told them about John’s comment, which they must have known anyway as he is a member of Bulbeck PC and he certainly would have made his views known to them, I suggest that Bulbeck PC became over excited and got it’s “knickers in a twist”.

I also suggest that no-one Bulbeck PC had read my report in full, if at all, or someone would have proposed that they calm down.

The only inaccuracy in my Report of 12th September was when I wrote “You will need to read the *Bulbeck Beacon* (available online) at the end of the month for an up to date story”. The *Beacon* is not online and I apologise for this inaccuracy, and nothing else.

Meantime I do sympathise with all Bulbeck residents and the Bulbeck Parish council regarding the Travellers’ visits and support every action they took. Sadly it may not be over yet.

Alastair Everitt

Dear Editors,

And More....

There have been several reactions, quite understandably, to the report in The Swaffham Crier of what I had said, or what was purported I had said, at the Swaffham Prior Parish Council meeting in September. I am sorry that I had not been able to respond earlier to Terry Ling’s letter as the November Crier arrived at my house only after I had left for a fortnight, and my return was after the deadline for submission. The Chair of the Swaffham Bulbeck PC has written a fuller account of what transpired in the previous issue of the Crier.

I think that there was added twist from the reporter. For example, in the October

article it was mentioned that ‘ . . . Reach was well endowed and probably the caravans could be redirected. They could look quite picturesque on their Green.’ Some people have attributed this to me, but *I had never said this* and it is clear from the article that this was solely the author’s view (*Joke surely? Eds*) , not mine. We need to support each other, and not move them on to the detriment of some other village. I was quite touched when a resident of Ancient Meadows in Bottisham contacted me to offer help and told me that when they were aware of travellers in the area, they parked their cars as a barrier to encroachment on the open space they have there. I am now negotiating with ECDC on providing some more permanent barrier there, since that land is owned by ECDC.

Swaffham Bulbeck PC have agreed on measures that will protect the Denny from further encampments and preserve the character of the Denny without unsightly barriers or fences along almost the whole of the perimeter. It is unfortunate that the temporary measures erected to stop further encroachment look so ugly, but the original idea of dumping huge logs at certain parts of the perimeter was not enough of a deterrent.

John Trapp

Dear Editors,

Funding Available

The Parish Council have reviewed their finances and have decided to release some reserve money for deserving groups within Swaffham Prior. We are inviting applications for grants of any amount up to £5,000 for use on projects within the village. The same selection criteria will apply as for the CIL monies, namely

The project must be in Swaffham Prior and not covered by existing works or funding.

There has to be a clear objective for the use of the money and the project has to be achievable within a reasonable timeframe.

There must not be any significant ongoing maintenance costs.

The project has to be for everyone in the village, and not just for a select few people. The project may, however, address a specific age band of people. The age bands are 5-11, 12-17, adults and seniors.

The project does not involve buying any land.

To apply for funding, please email the Clerk at SwaffhamPriorClerk@gmail.com. The closing date for applications is February 12 2020.

Steve Kent-Phillips
Swaffham Prior Parish Council



Letters to the Editors



Dear Editors

CENTENARY OF THE WAR MEMORIAL WINDOWS - SATURDAY 21 DECEMBER, 2019

A quick thank you from the organising team to all involved in making possible the event in St Mary's Church on Saturday 21 December to recognise one hundred years to the day since the installation of our unique war memorial windows.

The date caused us a few concerns – would anyone turn up on the Saturday before Christmas? To our delight well over 100 villagers and visitors attended. The scene was set by a moving recording - *Unfinished Lace*, written by David Stevenson and performed by local band The Cyriacs. Then Brenda Wilson, Rod Clayton and Michael Cazenove told the story of the windows, the remarkable imagery of which was illuminated against the deepening darkness. A reading of the poem *De Profundis*, by American poet Nathalie Anderson who had travelled from Philadelphia to take part, highlighted further the unusual depictions of military hardware and personnel. Rev'd Sue Giles then conducted the Act of Rededication. Names of the fallen were read out and members of the congregation stood when the name on the card they were given on arrival was read out – a very personal and moving way to remember the dead. Echoing the original service of dedication, Seb Parton played the Last Post and Reveille either side of a period of silence, and then people laid flowers at the memorial cross. The Bishop of Huntingdon led a blessing.

Refreshments followed, and people had a chance to look further at the imagery of the Windows and the wonderful new Children's Window, a stunning temporary in-



The Village Posies are still looking good in St Mary's

stallation by the children of the primary school. Thank you to staff for their support.

In addition to all above, thank you to the bellringers, the school garden club which decorated the church porch, church flower arrangers, Deb Unitt for musical accompaniment, Andrew Camps, Andrew Noyes and Chris Goodfellow for technical and on site assistance, and Dave Wellburn for help in designing the structure for and erecting the Children's Window.

Please see the website www.swaffhampriorww1.org for close-up pictures of the unique windows, and please do visit the Children's Window which is especially vibrant on a sunny day.

Thank you for your support

Dee Noyes, Annette Goodfellow and Janet Willmott



Dear Editors,

Funeral Thoughts

97 is an age when one contemplates one's funeral! During the war I flew with 100 Squadron and gained the DFC. (100 Squadron is still operational and based at RAF Leeming in Yorkshire.)

All members of my crew have been given military funerals. Two RAF officers attended the funerals, bringing a 100 Squadron wreath, and a bugler sounded the last post. Then one of their Hawk jets made a fly-past.

I phoned up the Squadron recently and asked if they could accommodate me - they said yes, but would prefer to wait until I had received the Queen's telegram for my 100th - and come to think of it, so would !!!

Henry Brown

From our Reporter at the Parish Council Meeting

“School Nursery Provision” was twelfth on the Agenda but it had been brought to the start of the meeting so that Head Mistress Helen Bartlett did not have to endure/enjoy all the meeting. The school is now able to provide space for six children aged 3 upwards. This provision is something they already have in Bulbeck, but not here. It will be a tremendous boon for some families. The Headmistress was lucid, spoke quickly, and dealt with all the questions thrown at her. “Do you have space for them?” “Yes, the space requirement, including the space outside, is 2.3 square metres per child. At the moment the school has 2.8 square metres.” Is there a risk in teaching children too early?” “No, it teaches them to socialise and to be introduced to some learning under the guidance of a specialised teacher.” Helen answered in far more detail than this and in the middle she began coughing, and coughing, and coughing. I was sitting next to her and offered on my flattened copy of the Agenda a tablet. Helen looked at it, her eyes lit up, and she asked “Is THAT a Fisherman’s Friend?” I nodded. She said “Thank YOUUU.” Popped it into her mouth, and did not once cough. Wonderful things those Fishermen Friends.



“How do you choose new pupils” asked someone. “We don’t choose them. Parents apply to the local authority and the School gets what it is given.” She admitted this does save the School an immense amount of time. Then she spoke about the excellent SATS results, and other results. This School is now something of which the Village can be proud, and this has not always been the case. We are very lucky.

Though liking the idea of “Re-Wilding Verges” the PC does have two concerns - “Re-Wilding Verges” can look messy, and, “Tall Plant Growth can obscure ‘line of sight’ on the roads. So they have selected 3 trial sites outside the Village Conservation Area.

There was quite a long discussion about our reserves, and, with an agreed re-jigging, about £9,000 is available to distribute. Paul thought a note should be put in

the *Crier* asking for suggestions of projects up to £5,000. He thought it should be shared by many rather than given to just one large project. Steve produced the list of the materials needed for the Scout Hut, with the Scouts providing the labour, and suggested the bulk should go the Scouts. He reminded the meeting that the Scouts had missed out on CIS money because of the conflicting surveyors' reports. I was surprised that no one backed Steve up. Here we have a school doing so well, and now is the opportunity for the young to have a meeting place in the centre of the village, and for them, if they wish, to have an opportunity for an exciting out of school activity. Paul's proposal won the day.

The PC, from nothing, now has 6 full pages of cemetery regulations. It will be on line if you wish to skim through the sixty-six rules. A new Daisy Wheel is being purchased for the Play Area at a cost of £792. It is an improved design and will be less susceptible to damage.

During PC Reports Alan, perhaps excited by the new money, asked whether the Village Drive Way could be asphalted. Paul threw up his arms and said this regularly comes up every year – in fact already once this year. And the same pros and cons and arguments were gone through again, with the usual conclusion - “Get Martin to fill in the holes”. Michael Limb later from the Public Gallery provided the ideal answer by recalling the glory days of Eric Day who every so often would trundle along with his wheelbarrow of ashes and complete the job. Michael said that if the PC ordered a load of stones from Martin, and if another volunteer (such as Alan) could be found, he would happily fill in the holes. I think Alan was happy to help but I am not sure whether the PC approved or not.

David provided his monthly Heating Report and everything is moving very quickly indeed. Do read his report on the Community Heat Project website and bring some good tidings to your celebrations. In the New Year we are going to see the Village flooded with heating commitment posters in peoples windows. A prize is being offered for the person, young or old, who counts the most accurate number of posters in each area of the village. Don't worry if you cannot cover the whole village as not many people may do it. Gives you a better chance of winning. Just do what you can and make a record, even if you find no posters. If you are 18 and above you will receive a nice bottle of wine, either red or white. If the winner is under 18 the prize will be negotiated.

Carry out your survey any time between Tuesday 14th and Sunday 19th of January and send it to the Editors by 20th January at the latest. This is a most exciting time for the Village. Enjoy.

After the meeting closed members retreated to the Red Lion for hot mince pies, after yet another good twelve months.

Excited by the new money, Alan [Durant, VH Chairman] asked whether the Village Hall drive could be asphalted. Paul threw up his arms and said this regularly comes up every year. With the usual conclusion—No. Just get Martin to fill in the holes instead.

Alastair Everitt



**Swaffham Prior's
Boxing Day
Hockey Team —
a great time was
had by all and we
only lost 1-0 this
year!
Full report next
month.**

ANNUAL COFFEE MORNING

10.30 – 12.00 Noon



**Wednesday
5th February
2020**



2 Cage Hill

**Cake Stall & Raffle
Produce Stall**

All proceeds to St. Mary's Church

Community Heat Project

Just a few details extracted from David's lengthy **November Report** to the PC. Read his full report on the web.

"a more technically advanced and efficient design that will be capable of supplying 80c heat from entirely renewable sources." That is an amazing achievement in just a few weeks. Why were the previous advisers so wide of the mark?

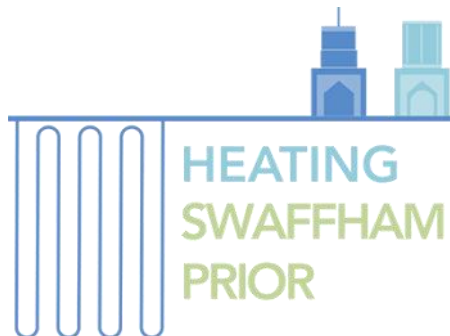
"The capital costs outlined in the funding application are higher than originally anticipated (£7.5m, a £1m increase)". Wait a minute. The previous estimated cost was always £2-3 million. When did the huge increase come? Steve made a quick calculation of the cost per household. He enjoyed that.

These are just tasters. There is so much more in David's report.

Comment on David's **December Report**

Posters will shortly be delivered to every household and those who have "signed up to the network" will be asked to display them in their windows. This should give a tremendous boost to the project when it shows the large number who are already committed to the scheme

Alastair Everitt



JULIE'S HEALTHY RECIPES FOR JANUARY

Yummy Granola Bars

- 75 g blanched almonds
- 250 g rolled oats
- 40 g sunflower seeds , or pumpkin seeds
- 100 g runny honey
- 6 tablespoons smooth peanut butter , or almond butter
- 10 Medjool dates , stones in
- 40 g bran
- 1 teaspoon ground cinnamon
- 1 pinch of sea salt
- 50 g sour cherries , or dried cranberries
- 50 g dried apricots

Method

1. Preheat the oven to 180°C/350°F/gas 4. Lightly grease a 22cm-square baking dish with oil, then set aside.
2. Roughly chop and add the almonds to a large baking tray with the oats and seeds. Spread them out into an even layer and place in the hot oven for 12 to 15 minutes, or until golden, stirring halfway through.
3. Gently heat the honey and nut butter in a small pan over a low heat. Meanwhile, slit open the dates, pull out and discard the stones, then place into a blender with 100ml of warm water.
4. Blitz to a paste, stir into the warmed honey mixture, then leave to cool.
5. Transfer the toasted oat mixture to a large bowl with the bran, cinnamon and salt. Roughly chop and stir in the dried fruit, then mix in the honey mixture until well combined.
6. Spoon it into the prepared baking dish, using the back of a spoon to press it into an even layer.
7. Bake in the hot oven for 15 minutes, or until golden and set.
8. Pack into an airtight container to keep.

Two minute Breakfast Smoothie

- 1 banana
- 1 tbsp porridge oats
- 80g soft fruit of your choice
- 150ml milk
- 1tsp honey
- 1tsp vanilla extract

Method

Put all the ingredients into the blender and whizz for 1 minute until smooth. Simple, quick and delicious!

Keeping it Regal
on Thursday January 30th 2- 3.15 p.m.

Eye catching full length portraits that once lined the walls of Tudor and Stuart palaces are brought together in the newly refurbished **gallery 3** with a sparkling new display. They go beyond being a mere who's who showcase, functioning as sophisticated political manifestos. We look at the role of artists working at court, especially the ever talented Flemings, Anthony Van Dyck and his successor, Sir Peter Lely, who took the business of styling the ruling classes to a new level in English portraiture.

Fee: £18 Deadline: December 20th



***In the Flesh* in the Charrington Print Room**
on Thursday February 13th 2 – 3.15 p.m.

In this special display of nudes by Rembrandt, we witness the renowned master of the etching at work, both technically stunning and stylistically challenging, as he took up the prestigious genre of the nude but made no attempt to follow the Italian classical ideal. In fact, in northern Europe, it was rare to find artists depicting the nude, as they preferred to make no demi god of man, recording man as he was.

We take a fresh look at the nude through Rembrandt's eyes and heart. **Fee: £18**
To enrol, email tutor at deborah.monteiro@btinternet.com

Cambridgeshire Fire and Rescue Service



I look upon December to February as the ‘doldrums’ of the year activity-wise – but that cannot be said where CFRS are concerned. All times of the year present challenges to The Service, and winter brings with it heightened risks to our community and to those passing through.

Prevention is better than cure, a maxim more appreciated within the emergency services than most, where road traffic accidents are concerned

Whatever steps the Department of Transport and our local authorities initiate RTA’s continue to challenge CFRS. Its no picnic turning out on a cold wet winter’s night to deal with situations where life is at risk.

So, what might we do to help ?

One idea is to install onto your mobile phone the ‘**what3words**’ app. Should you be involved in or witness an RTA this ultra accurate positioning will route all emergency services directly to the scene.

Also, ensure that vehicles are regularly and fully maintained and serviced, tyre condition is good and pressures are correct – check these weekly. Try not to undertake unnecessary journeys and let others know your plans.

Home safety, so often taken for granted, should be constantly thought about. Not just security day and night but safety, particularly in the kitchen where most domestic fires originate. It’s not ‘rocket science’ ensuring that clothes, tea towels etc are kept well away from naked flames, or even searingly hot electric cooking surfaces.

From CFRS – have a happy, healthy and complete New Year.

P.S. – Keep testing all smoke and CO monitors.

Michael White

Mythical Beasts

3. The Chimæra

About the last thing you’d want as a pet is the worst of the Mythical Beasts yet.

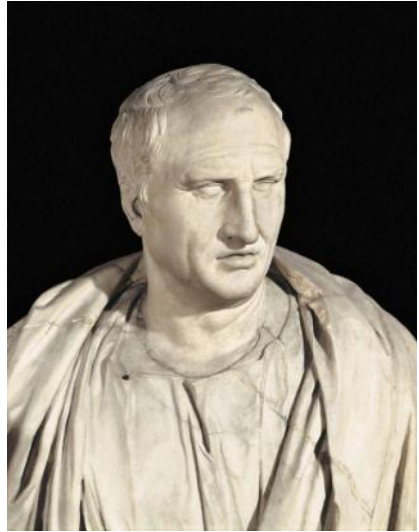
Having the head of a lion
on the trunk of a goat,
and the tail of a serpent
at the end of its coat,
would seem to exclude it
as a pet to admire - - - .

Especially with its habit of spitting fire.

Ophir

Most Far-seeing Quote of Modern Times?

*The Budget should be balanced, the Treasury should be refilled, public debt should be reduced, the arrogance of officialdom should be tempered and controlled, and the assistance to foreign lands should be curtailed, lest Rome will become bankrupt. People must again learn to work instead of living on public assistance." ---
Cicero, 55 BC*



Cicero? **55BC?** Well, that just goes to show....

Not a lot, actually, because not only did Cicero never say any such thing, but it wasn't said at all until 1965, and then by a writer of historical fiction called Taylor Caldwell. This boring fact however, has not stopped many politicians from "quoting" it, to Congress even, usually when they want something cut, which is most of the time. Perhaps it's appeared on Facebook?

Contributed by Rob Mathieson

HELP REQUIRED FOR DELIVERY OF SWAFFHAM CRIER

Is there anyone who could help with the delivery of the Swaffham Crier Magazine to houses in GreenHead Road Swaffham Prior.

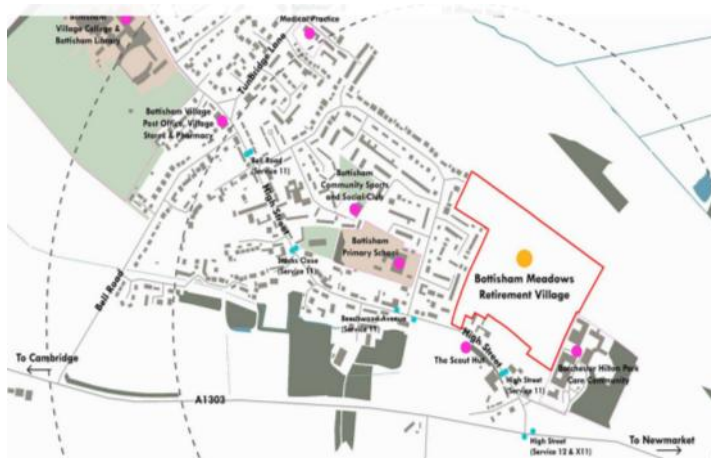
Please contact Pam Waters 01638 741035. (Distribution Manager) for more details.

Bottisham Surgery Opposes Proposed Retirement Village at Bottisham Meadows

Our priority at Bottisham Medical Practice is to provide high quality of care to all our patients.

Nursing Home patients can have complex and unpredictable medical care needs and deserve a high level of medical care. We are concerned by the impact the proposed Retirement Village at Bottisham Meadows will place on our limited resources, to the detriment of our existing patients.

We have a small practice population of less than 6000 patients (the 'average' GP Practice has over 8000 patients), with a high ratio of doctors to patients. Despite our small list size, we already provide Primary Care services to a disproportionately large number of frail, older patients, which has an enormous impact on the limited resources we have available. In addition to looking after a high number of elderly patients living independently and within supported housing schemes, we also provide GP services to the residents of Hilton Park Care Home (one of the largest nursing homes in the East of England) and Queens Court (a large residential and dementia care home). There is no current explanation of what additional resource would be available to us to provide the care residents of Bottisham Meadow Nursing Home would



require.

We very much value the services we offer to our patients and hope that we can sustain these in the future. Wherever possible, we are trying new ways of working to make ourselves increasingly available to our patients (e.g. online appointment bookings, extended opening hours to include early morning GP surgery appointments evening telephone appointments), and to accommodate the needs of our elderly patient population (e.g. volunteer transport scheme, and prescription delivery services). We fear, however, that the sudden expansion in our practice population associated with the planned Retirement Village will create an additional demand for services which we are unable to resource.

We oppose the development as we anticipate we will not receive the additional resources we will require to provide the medical services these patients deserve without compromising the existing quality of care we can offer. We strongly urge our patients join us in voicing their opposition.

Bottisham Surgery

Feast your Eyes

The Art of Food

The principal dish of the Sensual/Virtual season at the Fitz

This is a show to dazzle the eyes and tempt the palate, served up appropriately in time for Christmas, the so-called season of plenty.

The museum has commissioned a giant virtual pineapple which is proving to be a magnificent crowd puller. It is only once inside that the story is revealed, where we can discover the unique link with the Lord Fitzwilliam's family of how this luxury fruit was first grown successfully here in Cambridge !

We are invited to consider how food defines who we are, from the sins and sacrifices in religion to prosperous times with belly aching, satirical images of gluttony in the western world, our attitudes to what we eat and where it comes from. The colourful symbolism and identities of food across different cultures and a time period spanning 1500 to 1800, has generated much art and design – prints, paintings, ceramics, precious materials and even the confectioner's highly prized talent of recreating fake food that is a breathtaking showcase of skill and sophistication.



The Flemish followed by the Dutch feature significantly in this show, pioneering in the art of food, perfecting the illusion of reality and making the still life their very own, unique contribution to the history of art.

We will be able to relish a Tudor sugar banquet (remember Queen Lizzie's appetite for this luxury commodity!), a European feasting table and a Georgian confectioner's workshop and discuss how our senses stimulates others.

Eye popping and mouth watering, the art of food will most definitely be food for thought !

**3 Thursdays – February 27th, March 5th & 12th 2 - 3.30 p.m. OR
Saturday February 22nd – a single condensed session: 2- 4.40 p.m.**

Fees: £52 or daily rate @ £18 Feb 22nd - £30 (places limited)



The Children's Memorial Windows

From Helen Bartley, Headteacher, Swaffham Prior C of E Primary School

We are so glad the windows have turned out well. They look even better in situ than we had anticipated! They have been a bit of a labour of love - we're really proud of them and what they represent. Every child has been involved in their development - initially thinking about the designs and then everyone has painted a piece.

The school was approached by Dee Noyes and Janet Wilmot to think about how the children could be involved in the war memorial re dedication. We decided to try to complete our own window to commemorate the past and also to think about the future. The whole school visited the church on Remembrance Day and the children met Dee who very kindly took the time to explain the concept of the windows and children then had a chance to use them for inspiration and sketch their own designs in church.

Our thinking behind the windows was that we wanted them to represent our school and community and the school values as they are now. The motifs around the top and bottom represent our four classes - Bees, Hedgehogs, Swifts and Butterflies. These were renamed after our talk from local ecologist and parent, Mike Barker, who explained they are some of the wildlife at risk in our area. Each class then set about designing their own window incorporating our school values. The Year 5/6 window is about Compassion and Remembrance using the poppies and the black and white silhouette of the soldier at the grave. There are 32 poppies, each one drawn by a pupil in the class. Year 3/4 thought about a symbol of our school - the maypole that has remained unchanged from before 1919 and continues to this day and represents Community and Perseverance. Year 1/2 considered how to represent the future - everyone around the world living in Peace. The Reception class thought about a symbol of our village / the windmill and the rainbow represents Wonder in our world and Hope.

From Dee Noyes, Anglesey Benefice Secretary:

The idea came from a conversation Janet and I had with Helen; I had always wanted to do something with school for the War Windows' centenary using the only window in church without stained glass and Helen was enthusiastic about the idea. All of the children visited the church on Remembrance Day Monday 11 November to hear the story of the windows and to do sketches of anything that inspired them in St Mary's. Staff were really buzzing at the possibilities. Janet and Dave Wellburn worked on the practicalities - sheets of Perspex coloured using glass pens would slot into place to make a temporary installation. The images that arrived on the Thursday before the centenary event were beyond expectation - the colour, vibrancy and the brilliant fit of the imagery were just overwhelming - and made us quite emotional. Mr Wellburn said they outshone David Hockney's window in Westminster Abbey!!

See cover. Eds

Spring Jumble sale
Saturday 14th March 2020
From 2-4

St. James' Church, High Street, Lode, CB259EH

There is a car park opposite the church, where it is helpful if you could leave your car, so reducing congestion in the High Street

Entrance £1 adults and children are free.

Refreshments are served, including tea, coffee and home- made cakes, to keep you going, during or after your jumbling efforts!

Come along and find some bargains. The money raised goes towards community activities and some smaller local charities.

Finally, Jumble sales are a way of reducing waste, by recycling and re-using stuff that might otherwise be thrown away. Come along and join us, and we look forward to seeing you.



Our meetings are usually held on the third Thursday of the month at 2.30pm in Lode Chapel. At our next meeting on 20th February we will be look at our theme for 2020 "Building Hope and Confidence". You are most welcome to come and join us.

Copies of our programme for the year are available in all five parish churches.

Ann Langran



LET'S DANCE

Come and join us dancing on Saturday evenings in the **NEW** Main Hall at Bottisham Village College.

We will have music for Ballroom, Latin American and popular Sequence dancing.

Dates: January 11th, February 8th (Black Tie optional), March 14th, April 4th and May 2nd (Black Tie optional)

.Time: 7.30pm to 10.30pm.

The cost is £12 per couple. You are welcome to bring along your own refreshments. There is ample parking on site.

For further information please contact: Frank and Sue Hancocks, 01638 741159 or check out our website: www.letsdancecambridge.org

**Let's Dance Club is a "not for profit" organisation established to provide dances for the community.*

Red2Green News January 2020

Happy New Year from everyone at Red2Green. We had a jolly Christmas season that was full of fun and games, Christmas jumpers and an elf named Star (his adventures filled our social media feed!). Looking back over 2019 so much has happened at Red2Green and we are excited about what 2020 will bring. Watch this space!

Have you been to see the changes at the Café and the garden yet? It has taken on a vintage tea-room feel, with furniture donated by the local community and upcycled by our learners. We still need teacups, but not saucers, if you have a vintage teacup you don't need then we'd love to take it off your hands.



Our new head chef, Pauline, updated the menu to include bacon baps (with bacon from Hurrells butchers of Burwell) and each week specials including a daily soup and cake options get e-mailed out – to join the mailing list see our website.

Our learners have been enjoying learning new skills at the café and would love for you to come and try their cooking. Gluten Free and Dairy Free options are available.

We are still recycling lots through the terracycle scheme including crisp packets, flexible cleaning packaging and baby food pouches. These can be dropped off at the café.

We want to be able to recycle more and so we are fundraising to buy bins that can be stored outside and then you can drop your recycling off at your convenience. To donate go to: <https://www.justgiving.com/campaign/GreenAtRed2Green>

The Red2Green Community Café on Lode Road, Botisham is open Tuesdays and Thursdays 10am-3pm



TOTALLY TAURUS

My daily horoscopes

Leave me sad,

In the paper,

Black on white.

When they're bad

They're never wrong,

When they're good

They're never right.

Ophir

Wicken Fen News

The open water areas of the fen are attracting some wonderful winter wildfowl at the moment. It's a great time to see the plumage of the different species and the differences between males and females – the males generally much more colourful to attract a mate come breeding time. If you don't have any binoculars you're welcome to call in to the Visitor Centre and borrow some – several of the hides have pictures of some of the species you can find at Wicken Fen to help identify what you see. You'll find birds such as greylag geese, shoveler, gadwall, wigeon and teal. We'll be celebrating the unique wetland habitat by holding a World Wetlands Day Walk on Sunday 2 February at 2pm – see <https://www.nationaltrust.org.uk/wicken-fen-nature-reserve/whats-on> for details.

If you're thinking about starting some new activities in the new year, we have our weekly Health Walks on Wednesdays at 10am. Each walk is around 3-4 miles and takes around one hour. Meet in the car park at Wicken Fen – this is a free event, no need to book.

We'll also be recruiting new volunteers for various roles at Wicken Fen. Our Volunteer Recruitment event will take place on Sunday 1st March, so keep the date and watch out for more details closer to the time.

The café expansion project is going well. We're still on track to reopen in mid-February with a bigger, better building and a wider range of refreshments. In the meantime, we're still offering hot and cold drinks, light bites and cakes and bakes from Doris our mobile café. Don't forget that if you bring your own reusable cup, we'll be able to use less compostable cups and we'll give you 25p off the cost of your drink.

Mucky Pups pre-school sessions begin again in the new year on Wednesday 8 and Thursday 9 January, from 10:15-11:45am. If you'd like to get outside for fun and adventures with your little one see <http://bit.ly/muckypups> for more information and to book.





We hope you had a good Christmas break and that you have a happy 2020.

The Climate Emergency was at the centre of discussions at full Council. We received a petition calling for action to address the climate emergency, and discussed two motions, one of which was seconded by Charlotte. As a result, the District Council has now declared a Climate Emergency. This is a significant step to the Council making sure our operations and East Cambridgeshire as a whole take actions to reduce the damage caused by pollution, over consumption and waste. The motion which was passed set a target of 2050 by when East Cambs would be zero carbon, not 2030 as set out in the motion seconded by Charlotte and set out in the petition. The people who brought the petition have set up a Group called East Cambridgeshire CAN (Climate Action Network) to find ways to make East Cambs zero carbon by 2030. Anyone interested in joining can contact them on - eastcambscan@yahoo.com.



Full Council also agreed the latest projects to receive funding from the Community Infrastructure Levy (CIL). Most of these are in the north of the District, so we are keen to support applications from this ward. In order to be eligible for CIL funding a project must:

- Be necessary to support local growth.

- The total cost of the project must be between £50,000 - £2,000,000.

- Match funding and a financial contribution from the organisation submitting application must have been secured.

- The project must be deliverable within 3-5 years.

- If the project is highways or education related, the application must be accompanied by a letter of support from the relevant CCC department.

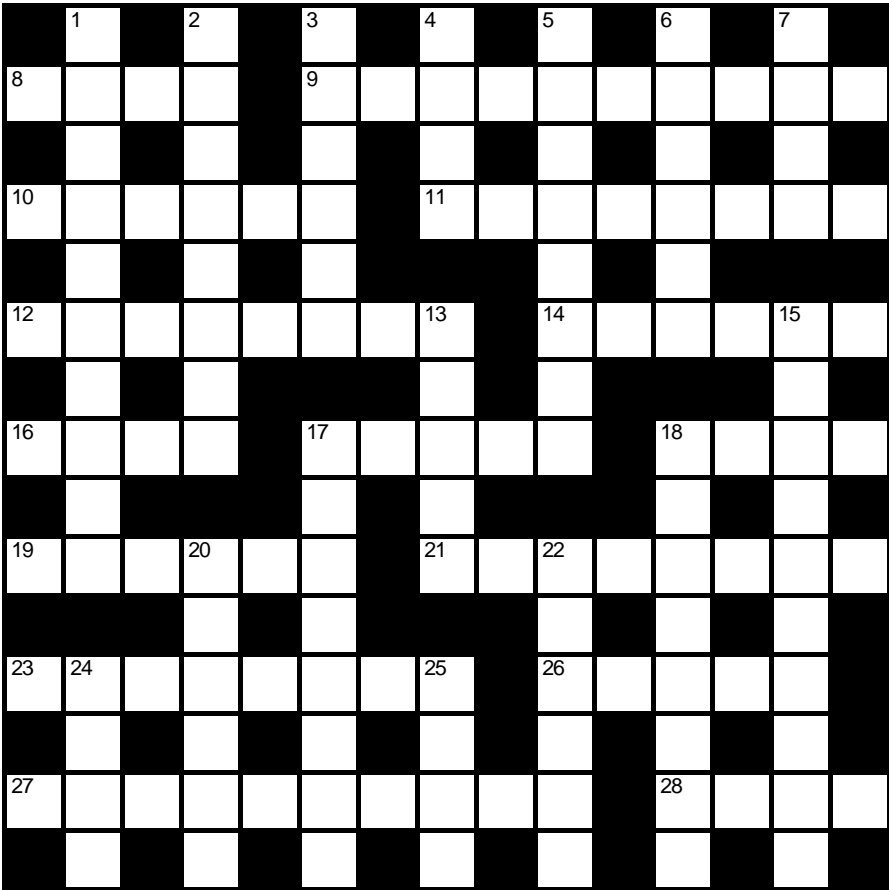
We would like to hear suggestions for bids for this funding, eg for cycle paths, community heating schemes or traffic management schemes.

Our next Councillors' Surgery is on Wednesday 22 January at 6.30 in the Poppy Room at the Bottisham Sports and Social Club, followed by meet your Councillors in The Bell from 7.45. Our following surgery will be on Thursday 27 February in Swaffham Prior.

Crossword Number 171

Compiled by BYWELL

Clues marked '*' contain no definition. Please complete them by 8pm. Send your answers to the editors by 18th January 2020. The first correct solution out of the hat will win a £20 meal voucher for the Red Lion—see the pub manager for full details.

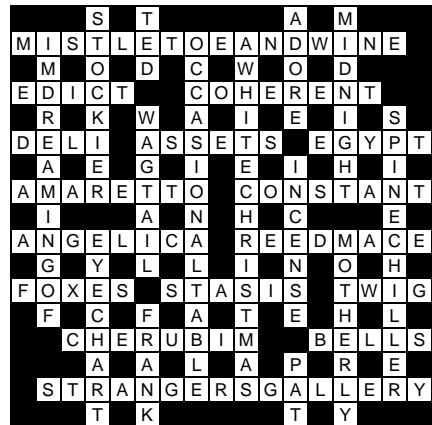


Name:.....	
Address:.....	
.....	Tel:.....

Across

- 8 One who painted 'Sticky End' in Indian territory (4)
- 9 * First well-known jazz pianist (10)
- 10 One pushing someone on a bicycle by the sound of it (6)
- 11 * Buried in earth at Chernobyl (8)
- 12 Those new to soup, perhaps (8)
- 14 Significance of tea or coffee perhaps to Britain (6)
- 16 Gathering live by the sides of valley (4)
- 17 Look hard at endless weed (5)
- 18 Nothing my dear, in Barnsley (4)
- 19 Girdle breaks and flies (6)
- 21 Send directions to motorway in characteristic surroundings (8)
- 23 * Desperado edges away long after cave collapses (8)
- 26 Some introduction for half a pianist, loosely speaking (5)
- 27 * Tramples on accidentally (10)
- 28 King of the poets (4)
- 7 Sat on perch: the end (4)
- 13 Create acid with sulphur first (5)
- 15 * Disturbing the back of the thigh (10)
- 17 Good man with flowers for those working hard (8)
- 18 * Fifty diaries republished (8)
- 20 Leave city in watery surroundings (6)
- 22 Agreement to climb on the radio (6)
- 24 And others recently passed up (2,2)
- 25 Pesto lovers hold back items for sale (4)

Solution to crossword no. 170



Down

- 1 * Rind found under climbing variety of mint (6,4)
- 2 * Work unit rising: packing in before time (4,6)
- 3 Veer out of control following direction to change direction (6)
- 4 Settled on fire (4)
- 5 Life is an alternative way to apply the final touches (8)
- 6 Purple climbing-horse inside a place soldiers visit? (6)

We congratulate Sue Jackson, the winner of last month's competition, who will receive her prize certificate from the editors. Honourable mention goes to Julien Luttrell, Robert Nunn, Joe Pumfrey, Trish Whitehead and Shirley Wilkins.

Notes from the Parish Council meeting - 12th December 2019

Mr. John Covill (Chair) chaired the meeting with seven Parish Councillors and two member of the public in attendance. The meeting started at 730pm.

School nursery provision:

Helen Bartley (Headteacher of Swaffham Prior Primary) thanked the Parish Council for hearing her and outlined the proposed changes of expanding the age range for pupils at the school from 4-11 to 3-11, to include up to six three year olds in Reception class. Details of this had been circulated in written form prior to the meeting. As a result of questions asked it was ascertained that:

There was more than enough physical space for more children in Reception class and the Reception teachers are qualified and well-trained with this age range.

The change would give more funding for the School and also create nursery provision that the village currently lacks to the advantage of the most disadvantaged children who are not able to travel to providers in other villages.

The pre-schoolers would follow the Early Years scheme, focussing on teaching independence and learning through play; Helen Bartley added that that larger class sizes can encourage independence and provide a variety of examples to learn from. Their learning would be observed rather than tested and the observations would be moderated by CCC.

The pre-school intake would be limited to six children initially but there may then be room to expand.

The pre-school place would be allocated by the local authority using the same criteria as the Reception children, e.g. distance of home to school, presence of siblings at the school, medical need etc.

The recent Statutory Inspection of Anglican and Methodist Schools inspection had resulted in the school being given a 'good' rating in both areas assessed and in the July Key Stage 2 SATs results, 98.5% of the children were at the level expected or above in reading and 87% in writing and mathematics.

Action: Clerk to write email of support to the Chair of Governors.

Matters arising from previous minutes (for information only):

David Greenfield noted that a letter regarding the proposed building on ground near the Smock Mill had been sent, a response received on 2nd December 2019.

David Greenfield also noted that the sustainability consultant for the Heating Scheme was yet to be decided but two potentials are Target Zero LLP or the University. The report requested would not be available in written form as it contained commercially sensitive information but it would be possible for Steve Kent-Phillips to arrange a time to view it on a computer.

Alan Durrant noted that on consultation, residents of properties backing on to the Village Hall car park were not happy with the idea of lighting in the car park so the idea has been dropped.

Consideration of planning applications received:

19/01242/FUL SE of 30 and 32 Mill Hill, Swaffham Prior. 4 Bedroom dwelling – refused.

Noted.

Accounts for payment:

These were agreed.

Rewilding verges:

David Greenfield reported having met with the village group proposing this and explained the concerns of the PC regarding messy appearance and the potential for reduced line of sight at some junctions. Potential sites were discussed, avoiding the conservation area and four potential areas for rewilding were proposed. These are:

At the entrance to village on the B1102 towards the junction with Cage Hill (a regular 1-1.5m cut against the highway to ensure good visibility from Cage Hill and Heath Road).

Coopers Green (with regularly cut, 2m wide paths diagonally across and along the boundary).

Green Head Road – the verges at the end closest to Cage Hill (with regular 0.5-1m cuts beside footpaths).

Cage Hill (with regular 0.5-1m cuts against the highway, as at present).

After discussion, it was decided that Coopers Green was not an appropriate site as rewilding would restrict pedestrian routes across it and make it hard to spot uncollected dog excrement, but that the PC supported the rewilding of areas 1, 3 and 4 as listed above.

It was also agreed that David Greenfield should to draw up contract for grass cutting to enable quotes from other companies to be collected in Spring 2020.

Budget reserves and potential Scout Hut donation:

Steve Kent-Phillips stated that the Budget always produced less than expected expenditure because VAT and cemetery income cannot be predicted. Unring-fenced reserves should be one and a half times the Precept which for Swaffham Prior would be £22,000.00. Current unring-fenced reserves are £27,000.00. After discussion, ring-fenced reserves were agreed for top road improvements, for travellers and the Clerk's holiday pay reserve, leaving £9,200.00 reserve that could be spent on projects for the village. It was agreed that Steve Kent-Phillips should write to Crier asking for projects and laying out the criteria. Copies to go on the website and the noticeboard.

Cemetery rules and regulations:

The proposed new cemetery rules and regulations had been circulated prior to the meeting.

Play area:

Steve Kent-Phillips had inspected the play area and adjusted the infant swing seats so that they no longer tip forward. The infant swing seat missing the front part has no sharp edges and still has a seat belt so is still suitable for use, especially for larger toddlers. The spring daisy needs replacing entirely. SKP obtained 3 quotations of £792.00 from 3 different suppliers. There was a fourth company which would

only cost £625.00 but would require the placing of more matting. It was agreed to undertake a like-for-like replacement from Wicksteads.

Flowers for the Memorial windows' rededication:

It was agreed that the Chair would take a small posy of flowers to lay at the rededication ceremony.

Clerk's report:

The dates of 2020 Parish Council meetings have been booked with the Village Hall.

The date of the Annual Village Assembly had to be agreed – Tuesday 26th May 2020 was suggested.

Action: Clerk to check this date is OK and book with Village Hall if so.

New and/or revised documents for 'Cemetery Costs', 'Rules for Funeral Directors and Grave Diggers', 'Interment form' and 'Request for the erection of a grave marker' had been circulated before the meeting – these were accepted by the PC.

The Clerk up-dated the PC regarding two requests for memorials. One requires the individuals concerned to establish ownership of the Grant of Exclusive Right to Burial (GERB) of the grave in question.

The second case requires the present owner to fill out a Form of Assignment; the PC confirmed that they are happy for this to take place via email rather than in person.

The cemetery spreadsheet listed some individuals as occupying more than one grave, which casts doubt on its accuracy. The Clerk is to investigate further.

The Clerk raised a concern that the names of people who had bought the GERB in the graveyard were listed on the website. Action: Clerk to produce a new list for the website where unoccupied graves with a purchased GERB are listed just as SOLD.

Ivett and Reed had been in touch requesting a contact for the placing of a memorial plaque for John Norris. Andrew Camps is to pass on details of the appropriate person from the Parochial Church Charities to the Clerk.

Parish Councillors' report:

Alan Durrant reported that the potholes in the Village Hall driveway have returned. Steve Kent-Phillips to contact Martin Mead to quote for a temporary fix prior to a 'proper' fix being performed in the Spring 2020.

David Greenfield reported on the Heating Scheme. The funding application is being processed and the answer will come in the New Year, but there has been encouraging feedback. Work is continuing on the planning application and several groups from around the country have been in contact as interest in the scheme grows. They have also been working with Cambridgeshire County Council educational team to provide information about the scheme.

Paul Latchford asked how many households had shown interest. David Greenfield said it was in the 170s.

John Covill asked how far through the village the scheme would extend. David

Greenfield said that this is shown on the notices displayed on the website and noticeboards.

John Covill noted that some people who had registered an interest had expressed concern that they had heard nothing recently and that contacting them would reassure. David Greenfield stated that they were waiting to confirm funding before they could confirm the design. If in January/February there were 300 households registering an interest, the design would change to cope with 300 households; the number of households that could be supplied depends on the design. Once the design is set in the future, the number of households it can supply will be set too.

Andrew Camps reported a substantial dip has developed in the road opposite the entrance to Manor Farm, and a second has developed further along the road on the same side. SKP noted that the Highways Agency won't act until it develops into a pothole.

Open question time:

Alastair Everitt asked if the new bin collection calendar had been delivered. This was confirmed.

Michael Limb asked when the latest bin bags had been delivered - David Greenfield to check date.

Michael Limb suggested asking for volunteers to help with patching the Village Hall driveway and mentioned that the path to the front door also needs dressing.

If anyone would like any further information on any of the above items, please do not hesitate to contact the Clerk.

The next Parish Council meeting will be on Thursday, 9th January 2020 starting at 7.30pm in the Village Hall. All are welcome to attend.

Jude Griffiths – Clerk to the Parish Council. Tel 745 106. Email swaffhampriorclerk@gmail.com

BON MOT NUMBER 103

**“The English, the English, the English are best.
I wouldn't give tuppence for all of the rest.”**

Flanders and Swann in the 1960s.

Happy New Year Everyone!

I wonder what this year has in store? Of course the answer to that question is multi-faceted ... what is ahead of us on a personal level; what will affect our communities; what events will shake our nation or cause our nation to celebrate; what will have more of a global impact for good or ill.



Following on from last month's article 'Living the questions', I'd like to pose two more for us to ponder at the beginning of this new year.

1. **In a world of constant and instant distractions** (oh the irony, a text message popped up on my screen and distracted me mid-sentence!), **how present am I to what is happening right here and right now? Am I here at all?**

I try, but often fail, to be 'fully present' when with another, or when doing something, in order to reflect the value of that person, task or opportunity. Someone once said, 'Speak in a way that others will want to listen to you, listen in a way that others will want to speak to you'. I'm really going to work on this, starting with switching my digital devices off one day a week, so my time with the family is not unnecessarily interrupted, so the people closest know they have my full attention. What can you do to be more fully present to those around you?

2. **How critical are you?**

It's easy to be critical of what is going on around you, at work, home, church, community or society in general, and to grumble about the shortfalls to anyone who'll listen. It's a much harder, but much more impressive thing, to be a person of blessing and to be an agent of transformation marked by love, joy, peace, patience, kindness, generosity, faithfulness, gentleness and self-control.

Ok, first thing to say, offering a critique is not always wrong, but I would suggest that being known as a 'critical person' is not a great legacy to leave. Often leaders are able to see shortcomings and areas for improvement, but how those things are communicated is so important. Never put an issue, or situation before the people involved. Listen well to those people, consider the person you are being critical of. Your criticism may well be valid, or it may not, others may share your perspective, or they may not. Some things have a greater significance than others (I write this a day before the general election!), but the way we conduct ourselves, our values and character, have the potential to transform situations and lives. Let us be loving, joyful, peaceful, kind, generous, faithful, gentle and self-controlled ... I'm going to work on this as well!

Thanks for reading, and for the encouraging messages I've had from readers who appreciate my ramblings - you are welcome at RENEW Church, anytime.

Rev. Alan

RENEW Services for January 2020

Sunday Morning worship is held at Bottisham Primary School

The services begin at 10.30 am

Croissants and drinks are available from 10.10 am.

Everyone is welcome to all our services

We have activity groups for children and young people

For more information about any of the activities of RENEW Church please contact:

Rev. Alan Brand on C.812558. Email: alan.brand@renewchurch.org.uk

Or visit our website at www.renewchurch.org.uk

FREecycle



If you have any offers or wants, please contact me by the 14th of each month by phone (01223 813362/07980 423210), e-mail (junthompson44@gmail.com) or drop a note through the letter box (23 Longmeadow). Please let me know if you would like anything repeating in subsequent issues. Everything is free and nothing is expected in return. Please can you contact the offers after the 1st of the month to make it a little fairer.

Offers

18 jam jars with screw on tops. Lis, 01223 811233

Wanted

Old hand tools and motoring memorabilia wanted. Anything considered. Ray 07591 747625

Wire hanging baskets. Fibre (not plastic!) wall plugs (rawlplugs), sizes no. 8 or no. 10. Bob or Nicky, 01223 813592

Your old light fittings, brown Bakelite switches, iron conduit and switches, bulb holders and holders. Sheets and bits of bakelite. Postcard rack (carousel if possible). George 07895 064727. (For an idea of what George is gathering this for – please see <http://georgetrapp.co.uk/georgetrapplamps.html>)



**The ever
flourishing
Memorial posies
In St Mary's**

Photo: Sue Wade



Anglesey Group Mothers' Union Report

Our guest Speaker in November was Rob Needle, The Children's Society (TCS) Ambassador for Ely Diocese. To begin with Rob told us about how on retiring from the police force he became involved with TCS. Feeling there was a need to promote this national charity working to support the country's most vulnerable children and young people. His bringing this to the attention of the Bishop of Ely led to Rob being appointed Ambassador for the Diocese.

**Last year, there were:
5,000 child runaways,
166,000 young carers,
and 1,860 unaccompanied child refugees entering Britain**

The charity was founded in 1881 by Edward Rudolf, a Sunday school teacher, and its partnership with the church has been of central importance ever since. Their work is entirely in the UK and involves direct work with runaways (5,000 a year), advice, counselling, training for professionals, sexual exploitations, inappropriate relationships, initiation into gangs and child exploitation. There are 166,000 young carers in England, and the charity try to give young carers a voice and support to make beneficial changes for themselves and their families. In 2018 1,860 unaccompanied child refugees entered Britain from Syria and Afghanistan. TCS does all it can to support these youngsters who have fled from troubled areas where their lives are at risk. General campaigning takes place to address situations where children are in distress or suffering through personal circumstances. This may be

benefit delays, bereavement, fire damage, or a broken boiler in their home.

Rob is manager of The Children's Society bookshop in Sawston, which is highly successful in raising funds for the charity. He attends St. Andrew's Church, Stapleford, and in 2016 St. Andrew's became the first church in the UK to enter into a partnership with TCS. During the year they pray for TCS, hold fund-raising events, publicise TCS campaigns, hold village weekends and organise an advent challenge.

Funds are also raised nationally through collection boxes, and church Christingle services during Advent. The Anglesey Group of Parishes' Christingle service 2019 was held at St. Mary's, Swaffham Bulbeck.

More information can be found on the TCS website <https://www.childrenssociety.org.uk>

Copies of our programme for 2020 are now available in all five parish churches. To begin our programme Reverend Roger Bowen will lead our New Year Communion Service on Thursday 16th January. Our meetings take place on the third Thursday of the month at 2.30pm in Lode Chapel. All are welcome to come and join us.

Ann Langran

Services in the Anglesey Benefice in January/February

Wednesday 1 January	8pm	“C by C” (Short candlelit meditative service), Bottisham
Sunday 5 January	8am	Holy Communion (BCP), Swaffham Bulbeck
	9.30am	Beyond the Stable*, Quy Village Hall
	11am	Beyond the Stable*, Swaffham Bulbeck
Sunday 12 January	9.30am	Holy Communion, Swaffham Bulbeck
	11am	Family Communion, Lode
Sunday 19 January	8am	Holy Communion (BCP), Bottisham
	9.30am	Holy Communion (CW1), Quy
	11am	Family Service, Swaffham Prior
Sunday 26 January	9.30am	Children’s Church, Lode
	11am	Morning Worship, Quy
Sunday 2 February	9.30am	Holy Communion (CW1T), Swaffham Prior
	8am	Holy Communion (BCP), Swaffham Bulbeck
	9.30am	Share the Light*, Quy Village Hall
		Share the Light*, Swaffham Bulbeck
	11am	Share the Light*, Bottisham

***#Follow the Star** service – all welcome

The ANGLESEY GROUP OF PARISHES comprises: Holy Trinity, Bottisham, St Mary’s, Quy, St James’, Lode, St Mary’s, Swaffham Bulbeck and St Mary’s, Swaffham Prior. You are welcome to attend services anywhere in the benefice.

Our Vicar is Rev’d Sue Giles; Tel: 01223 812726; suethevic@btinternet.com

*Detail of services and events can be found on www.angleseygroupparishes.co.uk;
www.facebook.com/angleseychurches; www.achurchnearyou.com/*

*For weddings and baptisms please contact: admin@angleseygroupparishes.co.uk;
For funerals please contact the vicar directly.*

Dates for Your Diary Jan 2020

Fri	24	Crier Copy Deadline
Thu	30	Keeping It Regal, The Fitzwilliam Museum, Cambridge, 2pm—3.15pm[11]
Wed	5 Feb	Coffee Morning, 10.30am—12 noon, 2 Cage Hill [8]

Numbers in square brackets indicate page number of an accompanying article

Club	Contact	Tel.	Date	Time	Place
FOSPS			2 nd Mon of Term	8pm	Village School
Beavers, Cubs and Scouts	Tim Doe	01223 861083	Variable		
Reading Group	Brenda Wilson	743937	1 st Weds of month	8:00pm	Kent House
Village Gardeners	Margaret Joyce	744390	3 rd Tues of month	8:00pm	Village Hall
WI	Pat Cook	742224	3 rd Mon of month	7.30 pm	Village Hall