



# The Swaffham Crier

Volume XLIV Number 2

February 2020



## Editorial

YOU CAN IMAGINE OUR DELIGHT when, strolling along Bulbeck Lode with Polly the Pup (aka chief Crier Crossword Judge) a pilot, who had been messing about in a inconsequential way in sky above our heads for a while, suddenly started to do something with a purpose. An oval shape? A dash, another dash, and...well, you can see the results on Page 3. What better start to what may prove an *interesting* year, and many thanks to George Sealey for such a lovely thing which must have taken such expertise, not to mention top sleuth Janet Willmott, who somehow or other found out who he was. She has her ways, you know...

Uniquely among local villages (perhaps uniquely amongst ALL villages) Swaffham Prior's residents are unusually well-up with what is happening at our Parish Council Meetings, perhaps because *Our Reporter* can be very amusing (or, as once rather sourly observed by an ex-District Councillor: "I always read the *Crier*...I need to find out what it said about me."). Of course, *Our Reporter* is just a sketch, it does not pretend to cover the meeting in full, this task being performed in our PC Notes. But what a good job our new PC Clerk, Jude Griffiths, is making of them. Parish Councils have to cover a lot of quite tedious complicated stuff, but she seems to make everything so clear and interesting. This month, we can read among other things that the much put-upon Martin Mead has finally got fed up with filling in the holes on the VH driveway and rebelled...

Many thanks to erstwhile SP resident Kim Bowers for her brilliant account of last year's Advent by Candlelight (for those who missed it: read this, and you'll take care never to miss it again) and many apologies to MICHELLE from the pub, who the editors, ever on the ball, managed to mix up with the Red Lion Landlady of eight years ago. We hope you like our cover — what a truly beautiful UNCULLED badger, and long may it stay that way! See you coffeing...

### Regulars

Letters	2
Our Reporter	4
Bon Mot	5
Donations	6
Julie's Recipes	10
CROSSWORD	12
Red2Green News	14
Bottisham Patients	18
WI	20
Village Gardeners	21
Comberton Ramblers	21
Bookclub	22
CLRs Cane and Trapp	23
Wicken Fen	24
BVC Courses	25
PC Notes	26
Renew	29
Church Services	31
Diary & Clubs	32

### News, Views & Reviews

Smiley Face in the Sky	3
Community Heat Project	6
Advent by Candlelight	9
Pet in Glass	11
Beware Courier Fraud!	16
Boxing Day Hockey	30

### What's On

Coffee Morning	7
Quiz Night	7
Crowns & Gowns	15

### Wanted

Prospects Trust Volunteers	19
----------------------------	----

Cover Picture: *The Badger* by Clive Riggs



## Letters to the Editors



Dear Editors,

### **Re-wilding the Verges**

I was pleased to see confirmation the Parish Council has agreed to run a pilot on the road verge cutting this spring in three locations as reported in the January 2020 edition of the Crier (Vol.44 No1).

The village gardeners (via Margaret Joyce) and I have agreed with David that we will take some photos to monitor the three areas before, during the spring and summer and then after the autumn cut. We will also do a survey to record what wild flowers bloom once the cutting pressure is reduced.

Margaret and I had a close look at the bypass verges in particular this weekend as this is not an area we walk regularly. We are happy to report that the soils are very thin, straight onto the chalk which means there are few nutrients and importantly this means that vigorous grass growth is unlikely. Most of the grass present are fescues which are not particularly tall so sight lines should not be affected.

Interestingly, we did notice a lot of yarrow, wild carrot, ox-eye daisy and other wildflowers native to chalk grasslands present in the verges and also a few basal leaves of an orchid ! We will report back what species of orchid in the spring – but probably bee or pyramidal. The change in cutting will allow these orchids to flower for the first time which is exactly the point of the change and is very exciting.

In the meantime, if there are any comments from village residents we would be pleased to hear from them.

***Mike Barker***  
Cage Hill, SP

---

Dear Editors,

### **Art and Craft Exhibition and Fair**

I'd like to thank you for all your help with publicising our Art and Craft Exhibition and Fair on the 1st of December last year. The event was a great success and that's due in no small part to the support of all the local parish magazines, not least the Crier.

We are looking forward to the coming summer when we will be taking part once again in the village hail over 2 weekends, 11/12th July and 18/19th July. We are hoping that our core group of 5 will be taking part but open to applications from other local artists to join us. Anyone interested can contact me here: 07778 666187 or by email to: [deborah@bramblecottagecrafts.co.uk](mailto:deborah@bramblecottagecrafts.co.uk)

***Deborah Richardson***  
On behalf of Prior Arts Group



*Smiley Face in the Sky* by **George Sealey**, a pilot from Marshall's Airport, flying above Bulbeck Lode on Saturday, January 18, 2020.

## From our Reporter at the Parish Council Meeting

It was raining for a change on the night of the January PC meeting. Michael Limb waited for me at the Village Hall driveway to ensure I avoided all the puddles which glistened in the driveway light. This is such a caring village.

Michael proceeded to make quite a contribution to the meeting and this started with item 3 - "Public Participation for items on the Agenda". This was introduced many years ago so that the public could make comments rather than waiting until the end of the meeting. The Agenda and Draft Minutes appear on the web and on the Village Notice Board one week before the meeting and offers the opportunity for anyone to make a comment before the meeting formally opens. It is very easy to forget this privilege.



Firstly Michael questioned the accuracy of the minutes saying it was David who had asked about the delivery of bin bags and not Michael, whereas he claimed to have been the person who asked about the bin collection calendar rather than myself. I gently disputed his claim and did not look at Jude who must have been goggle-eyed at the sight of these two old buffers debating this minor point. Such is democracy.

With that being resolved Michael then turned his attention to item No 2388 on the draft minutes - "Rewilding Verges". He maintained that Cage Hill was in the conservation area and could not be included in any experimental rewilding. Steve explained that while the South Side of Cage Hill is all in the conservation area, the North side is within it only as far as the bank running alongside Michael's old and new houses. Michael nil, Steve one.

Undeterred by this Michael then moved to item 13 on the Agenda - "Special Projects". He said that the footpath from Pulpit Corner to the Dyke is inadequately marked. He maintained that when you are in the middle you have no idea where to go. Peter, our Footpath Officer, admitted he had not walked it for some time but that when he did he always aimed for the largest bare chalk section on the side of the Dyke. He also suggested taking a compass. Michael was not happy with this or with Steve's suggestion of a finger post. He said the sign would need to be very tall with something like a ball or a thumbs up on top. At this Steve suggested that Michael "construct a bid" and pass it to the Clerk.

Charlotte Cane presented her ECDC report and detailed her concern that various errors and discrepancies were in three ECDC accounts. Do read her report for the details. She said that the amount of money was not large, but that is not the point. This is so very true. Is it a worry.

Moving on to "Village Driveway Repairs" it shows what talking and listening can achieve. Steve, Alan and Martin Mead had met to discuss the Driveway. Martin had become aware of a "porous tarmac" which would get over the problem with the roots of the trees. It was agreed that the Village Hall Committee would repair the flag stones outside the side door and improve the slope for wheel chairs. Once this was done the PC will complete the driveway with the new tarmac taking it right up to and including the disabled parking area. Nothing will be done with the car park.

This will all happen in the Spring.

The new Daisy Wheel is £800. Steve had asked the cost of installing it, and it seems this would be £1,800 as they recommended a new base, new fittings etc. Steve rejected this and will ask Andy Martin to attach it to the existing fittings. This will save us a lot of money.

Steve also said he had passed the “Special Projects” questionnaire to all groups and societies from the WI to the Scouts. It is also in the Crier and on the Village Noticeboard. Paul, who was not at the meeting, asked whether the submission date could be extended and this was agreed.

The date of the Annual Village Assembly is now fixed for 27<sup>th</sup> May. Again there were usual moans this year about how few had turned up last May.

This was quite unusual because there are usually 20 to 30 people. But, last year was a very busy time for the electorate. There was all the discord and social division over Brexit, as well as two elections. Michael Limb, who was on an unstoppable roll, made an interesting suggestion for increasing the numbers attending the meeting in May. More on this next month. It is truly a very gripping idea.

The meeting ended at 8.40 and this year there was a very noticeable calm in the PC, in the Village, and also in the Nation. No more potential Brexit fights in the Red Lion. On 31<sup>st</sup> January Brexit will have been achieved, Boris has an impregnable majority, the amazing Dominic Cummings is at his side to guide him, and his chum Donald Trump is backing Boris to the hilt. We can all look forward to a year of peace and plenty. Nothing can possibly go wrong. Can it?

*Alastair Everitt*

## **BON MOT NUMBER 104**

“An office party is not, as is sometimes supposed, the Managing Director’s chance to kiss the tea girl.

It is the tea-girls chance to kiss the Managing Director.”

*Katherine Whitehorn (1928 –)*



# Community Heat Project

**In his December Report David had asked all those who had “signed up for the project” to display a poster which had been delivered to every household. We have been told that more than 170 people have expressed an interest. This was a promotion to show how many of these had actually committed themselves.**

**To encourage people to check how many were on display I had offered a good bottle of wine to the person who produced the most complete check. The results had been given to the Editors by 20<sup>th</sup> January. Caroline has passed the information to me and someone now has a splendid bottle of red wine. Congratulations. The results are:-**

**High Street 2; Lower End 0; The Beeches 0;  
Fairview Grove 1;  
Mill Hill 0; Cage Hill 1; Greenhead Road 0;  
Adams Road 0; Tothill Road 1.**

**Some may have been missed.**

***Alastair Everitt***

## **Donations!**

Many thanks to the Prior Arts Group for their very kind donation to the *Crier* this month.



Please join us at the annual  
**COFFEE MORNING**

**2 CAGE HILL  
SWAFFHAM PRIOR**

**Wednesday 5 February  
10.30am – 12 noon**

In aid of St Mary's Church:  
including cake stall,  
produce, raffle  
and a chance to catch up with  
neighbours on a winter's day!

**ALL WELCOME**

# QUIZ NIGHT

Swaffham Prior Village Hall

**7.30 pm Saturday 14 March**

*Tickets £6 each. To book a table, contact*

Jenny Brand  
(01638) 742161

or

Lynne Rand  
(01638) 741960



*Jacket Potato Supper*

*Bring your own drinks and glasses !!*

Proceeds in aid of St. Mary's Church, Swaffham Prior

# **Advent by Candlelight**

## **Swaffham Prior 2019**

December is always an anxious time of year. So much to do, so little time to do it in, getting ready for Christmas. This year was no exception and made worse by the uncertainty of a general election. But amidst all the hullabaloo, the Advent by Candlelight concert always provides a welcome balm for the soul. On a dark, damp afternoon in early December, well wrapped up in coats, hats, gloves and scarves the audience (which the audience will not take off during the entire concert), we settled into the pews of St Mary's, and a stillness descended upon the place.

This was the 27th year the Cambridge Voices have presented the concert and this year's theme was 'love', in all its different guises, and fittingly began with a reading from the Song of Solomon.

The Choir's Director, Ian de Massini had undertaken scholarly research to create the setting of the King James version of the Song of Songs and had written a piece to open the concert about the figure of Joseph from the Christmas story who, as everyone knows, has just a bit-part in the proceedings and little (actually nothing) to say in the bible. Although, truth to tell, he had little to go on, Ian supposes that Joseph must have loved Mary very much.

One of the things that makes these concerts so enjoyable is that Ian invariably has a playful take on events. Consideration of Mary's silent husband Joseph yielded several flourishes as Joseph sung 'I've just met a girl named 'Maria Virgine' (Mary the Virgin) – with no apology to Bernstein. While upon being told she was expecting a baby, Mary cried 'Oh my Oh boy! and the Song of Solomon segued into Andy William's 'Can't take my eyes off of you' creating a fabulous mash-up.

The poems chosen to be read in between the choral works included much-loved verse like the sonnet by Elizabeth Barrett Browning – How do I Love Thee? and John Keats Ode on a Grecian Urn, alongside less well-known verses by the American Father Joseph Breighner, Oscar Wilde, as well as the glorious Dorothy Parker and a pleasingly terse quip or two from Wendy Cope on the subject.

The poems were complemented by a compendium of music from a plainsong hymn, to familiar contributors such as Duruflé, Mahler, Rüttli, Vaughan Williams, Gibbons and of course, Ian de Massini who celebrating his 60th birthday this year. To mark the occasion, rather than drink lots of wine which he happily admits is a daily activity and so nothing special anyway, he commissioned composers whom he has worked with over the years to write a piece of music for the choir to sing as a legacy when he is no longer around. So, compositions by Ivan Moody and Professor John Wilson of the University of Cambridge enjoyed their premieres as part of the programme.

What made this year's concert particularly special was that the final commission was written by truly home-grown talent. Tristan Latchford, who grew up in the village, has just completed his master's degree in Composition at Durham University and has now returned south. He recently joined the Cambridge Voices and, at Ian's request, wrote a piece of music for the choir specifically to be performed in St



Cyriac's. Tristan's carol, 'I sing of a maiden', is composed for soloists ranged around the church and two choirs, one in the apse and one up in the west end gallery singing 'in canon'. That is to say, two choirs singing the same music, but starting at different times creating the effect of the melodies melting over each other. The piece required two conductors mirroring one another and was shown off splendidly by the crisp acoustic of St Cyriac's that enables each voice to be heard quite distinctly, as well as the ensemble, to dazzling effect.

The concert was rounded off with what is surely my favourite of all the advent hymns (so much more melodic than many of the Christmas carols, don't you think?). We sung with great gusto accompanied by the wonderful voices of the choir and nigh on raised the roof! Then the programme finished with an arrangement of George Gershwin's 'I've got rhythm' ending with the line 'who could ask for anything more?' My thought's entirely.

After an enthusiastic round of glove-muted applause and foot stamping to show our appreciation (as well as bring the feeling back into our frozen fingers and toes) the audience were invited to enjoy a warm mince pie and a glass or two of mulled wine back in St Mary's to bring us back up to room temperature, accompanied by a jolly natter with friends and neighbours from the Shire (I mean, Prior). But truth to tell it does feel rather Lord-of-the-Rings sometimes.

So, next year when the preparations for Christmas are getting you down, the Christmas tree lights don't work for some inexplicable reason, Amazon have lost your order, and when you're struggling to remember what the point of it is, come along to the Advent by Candlelight concert. You won't find it in the Christmas Radio Times, nor on Netflix, it will not be televised. It will be live - all the more precious for it!

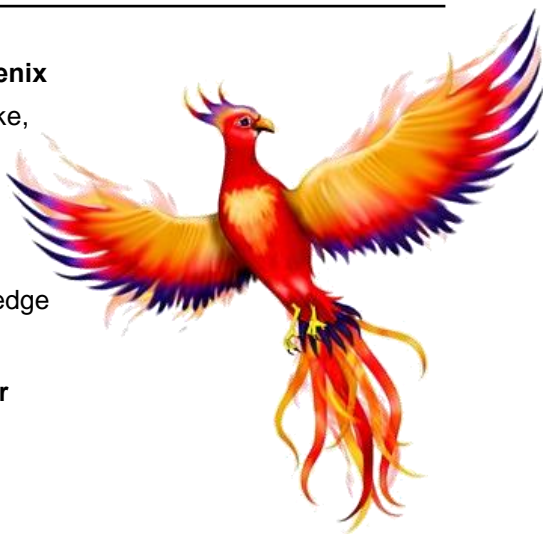
**Kim Bowers**

---

### **Mythical beasts: 1. The Phœnix**

No-one knows what it looks like,  
but right or wrong  
One thing is for sure,  
it has a diphthong.

But whatever its shape  
some had the knowledge  
For you see its image  
On Burwell's College!  
**Ophir**



---

# Julie's Recipes

---

## **Champagne & Raspberry Possets**

140g frozen raspberries, defrosted

2 tbsp champagne

(buy a mini bottle and treat yourself to a glass while you prepare dinner!)

200ml double cream

4 tbsp golden caster sugar

2 tsp freeze-dried raspberry pieces

shortbread biscuits, to serve

- Put the raspberries and Champagne in a mini food processor or blender (or use a jug and a hand blender). Whizz until the purée is as smooth as you can get it, then use a wooden spoon or spatula to push as much of it through a sieve as you can. Discard the seeds left behind.
- Put the cream and sugar in a saucepan and warm gently until the sugar melts. Increase the heat until just boiling, then boil vigorously for 2 1/2 mins, stirring constantly. Turn off the heat and stir in the raspberry-Champagne purée. Cool for 15 mins before dividing between 2 small pots or glasses. Chill for 30 mins, then sprinkle over the freeze-dried raspberry pieces and chill for at least 2 hrs more until set (or overnight if you're making ahead).

To serve, remove the possets from the fridge and add some shortbread biscuits.

---

## **Steak with béarnaise sauce and Watercress, Rocket and Shallot salad**

2 [sirloin](#) steaks

1 tbsp [olive oil](#)

knob of [butter](#)

salt and freshly ground [black pepper](#)

**For the béarnaise sauce**

250g/9oz [butter](#)

3 tbsp [white wine vinegar](#)

2 [shallots](#), finely sliced

bunch [tarragon](#), stalks and leaves  
separated and leaves chopped

few [peppercorns](#)

2 free-range [egg yolks](#)

½ [lemon](#), juice only

**For the salad**

small bunch [watercress](#)

small bunch wild [rocket](#)

1 small banana [shallot](#), peeled and  
finely sliced

1 tbsp vinaigrette or salad dressing of  
your choice

Season the steaks with salt and pepper and set aside to come to room temperature.

For the béarnaise sauce, melt the butter in a small saucepan over a low heat. In a

separate pan, make a reduction by heating the vinegar, shallots, tarragon stalks and peppercorns and cook until you have reduced by half. Strain through a sieve and allow to cool.

Whisk the egg yolks and vinegar reduction together in a glass bowl over a bain marie, until incorporated. Gradually drizzle in the melted butter, whisking all the time, until thickened. Remove from the heat and stir in the lemon juice, to taste. Stir in the chopped tarragon leaves and season to taste. Set aside.

Heat a large frying pan or griddle pan until hot and heat the oil. Add the steaks and cook until coloured on each side. Add the butter and cook until medium-rare, or to your liking (about 2½ minutes on each side for medium-rare). Leave to rest.

Prepare the salad by mixing the watercress, rocket and shallot in a bowl. Dress with the vinaigrette.

To serve, arrange the salad alongside the steaks and serve with the béarnaise on the side.

---

## Create a Portrait of your Pet in Glass

Have you ever stood laughing at the antics of your pet and thought, “I’d love to capture this moment forever?” Well now you can! Fused glass artist, Susan Purser Hope is running Dog and Pet Lovers’ workshops at her studio in Groveland, Roughton.

As Susan explains, “Having moved from a city based existence to Norfolk six years ago, I was amazed that everyone here seems to own at least one dog. They are just so much a part of life!”

Susan’s recent move into her new studio on the Groveland site along the Thorpe Market Road in Roughton means that she now has the space to run workshops so that everyone can enjoy the magic of working with fused glass. Participants can create their own piece of glass work either during a half day or full day in the studio.



“I thought about the subject that would most interest people,” says Sue. “Pets and dogs immediately sprang to mind! So, I have developed a day long course to enable pet lovers to create an image of their beloved animal in a glass panel.”

Workshops are designed for all artistic capabilities and complete beginners achieve lovely results, especially as the workshops are designed for a maximum of four so that Susan can give everyone her personal attention.

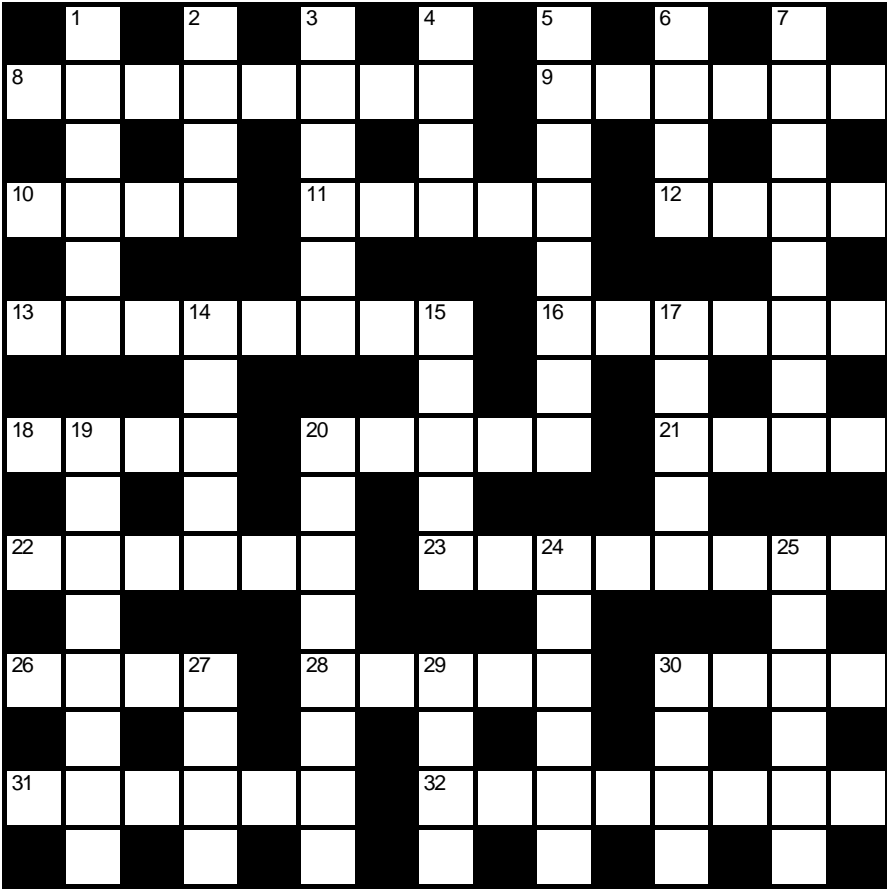
As one glass novice enthused, “I was really inspired by and thoroughly enjoyed the process of achieving my design. The help and information Susan gave us was invaluable and I loved it. I’m very much looking forward to the next class.”

Come along to a glass workshop and immortalise your beloved pet in a fused glass feature panel. Contact Susan on her email [susan@purserhope.co.uk](mailto:susan@purserhope.co.uk) or on 07970 419125.

# Crossword Number 172

Compiled by **NIBOR**

This month’s puzzle is a simple cryptic crossword. Send your answers to the editors by 18th February 2020. The first correct solution out of the hat will win a £20 meal voucher for the Red Lion—see the pub manager for full details.



Name:.....
Address:.....
.....Tel:.....

## Across

- 8 NB - pay attention! (4,4)
- 9 Wine cartel is broken up (6)
- 10 It is unusual to combine two military units (4)
- 11 Auctions of beer on board... (5)
- 12 ...vessel were ruined (4)
- 13 Complicated spectroscopy lacks cosy outlook (8)
- 16 Rio can change to become cooler (3-3)
- 18 Girl from US city finds empty shops (4)
- 20 Initially some people are careful entering room (5)
- 21 Dismiss Proust with no promotion (4)
- 22 Get there to find I've followed rebel leader to a king (6)
- 23 Sad tale boy sorts out (3,5)
- 26 Water rat very often likes eating starters (4)
- 28 Listen to Tibetan monk to discover alpaca (5)
- 30 Smack returning friends (4)
- 31 Nice home in Andes resort (3,3)
- 32 Youngster puts peg on horse with hesitation (8)

## Down

- 1 First buy a Zambian article and resell it in market (6)
- 2 Information bearing DNA sequence (4)
- 3 Rodent eats small creamy dessert (6)
- 4 Remove skin from old PM (4)

- 5 Finish off cake, Bob, and take out winter footwear (3,5)
- 6 Comfort when found in endless beer (4)
- 7 Unstinting use of our genes (8)
- 14 Crazy pushiest pet left oriental food (5)
- 15 Fight back to team leader for gins (5)
- 17 Perch in kangaroo stakeout (5)
- 19 'At for RAF fighters (3,5)
- 20 Observe Dutch leader on the French ship eating grapes (8)
- 24 Hat for punter (6)
- 25 Internally, I admire a dermatology lecturer (6)
- 27 Penny leaves Pearl for countess's husband (4)
- 29 Worker bearing stake (4)
- 30 Directions to sailor to mop up (4)

## Solution to crossword no. 171



We congratulate Robert Nunn, the winner of last month's competition, who will receive his prize certificate from the editors. Honourable mentions go to Chris & Mike Carrington, Roz & John Chalmers, Clare Freeman, Andrew Houston and Trish Whitehead.

# Red2Green News February 2020

## Cogs2Computers

We are back into the hustle and bustle of a new year and excited for our newest community project, *Cogs2Computers*, to get underway. This project, funded by the Heritage Lottery, will bring the community together, exploring and having fun with technology, from its origins up to the present day (and beyond!). February will be our first committee meeting and we will be working diligently to organise the activities and outings over the course of the year. Please keep a look out very soon for an update on some of what we will be getting up to.

### Red2Green Café and Garden

The Red2Green Café continues to open Tuesdays and Thursdays 10am-3pm. We have a menu of hot and cold savoury food and each week we make a selection of cakes. Where possible food is sourced locally. We use Hurrells butchers in Burwell for our meat, and eggs come from Snakehall farm in Reach. The garden is open Monday, Tuesday, Thursday 11am-2pm. We have a variety of plants for sale including hanging baskets and pots.

We are always on the lookout for items that we can reuse and recycle. In particular, we currently need 4" plant pots. If you have old ones you don't need please drop them in to the garden.

We continue to recycle crisp packets and we are raising money to buy recycling bins that can be outside at the café <https://www.justgiving.com/campaign/GreenAtRed2Green>

Introducing Neil We would like to introduce you to one of our learners who also works in our café as a sous chef. Neil has autism and has attended Red2Green for just over four years. Neil takes part in Aspirations (our service for autism) and also volunteers in the café. Neil told us: 'Since attending Aspirations I am calmer and quieter. The staff have helped me understand myself, which has helped me with my confidence and ability to help others.'

Before Red 2 Green, I tried a distance learning university course in game design, which didn't work for me. When I am not at Red2Green I am at home, watching films and playing video games.

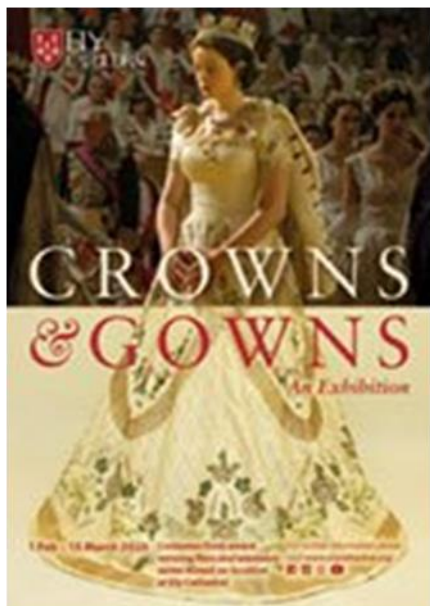
I started working at the RedGreen Community Cafe from the day it opened. Simon said he would like me to come and do a few days there when it was about to open, as I am a fairly literal person I took this very literally and showed up on the first day and have been there ever since. I love helping the other chefs to make



things, teaching them new techniques and how to make new products, for example, one chef wanted to know how to make pizza, which I showed him.

The cafe has changed me in a whole lot of ways, my people skills are better, my cooking skills have improved a lot, my ability to work as part of a team is really good and it has given me a lot of confidence in a workplace environment.'

You can meet Neil at the café on Tuesdays. Do come and say hello!



## CROWNS AND GOWNS - AN EXHIBITION COSTUMES FROM AWARD WINNING FILMS AND TELEVISION SE- RIES FILMED ON LOCA- TION AT ELY CATHE- DRAL

**01 Feb 2020 - 15 Mar 2020**

A fabulous collection of costumes, jewels, props, behind the scenes images and memorabilia from some of the major Hollywood movies filmed at Ely Cathedral.

This fascinating exhibition in the Lady Chapel will showcase some of the most iconic gowns and outfits from Elizabeth: The Golden Age, The Other

Boleyn Girl, The King's Speech, Macbeth, and The Crown. These productions bought global award winning actors to the Cathedral including Cate Blanchett, Scarlett Johansson, Natalie Portman, Michael Fassbender, Colin Firth and Geoffrey Rush.

### **Tickets**

On the door: Standard Cathedral admission fee including entrance to the exhibition £8

Cathedral Pass Holders admission to the exhibition £5

Sunday Admission to the exhibition £5

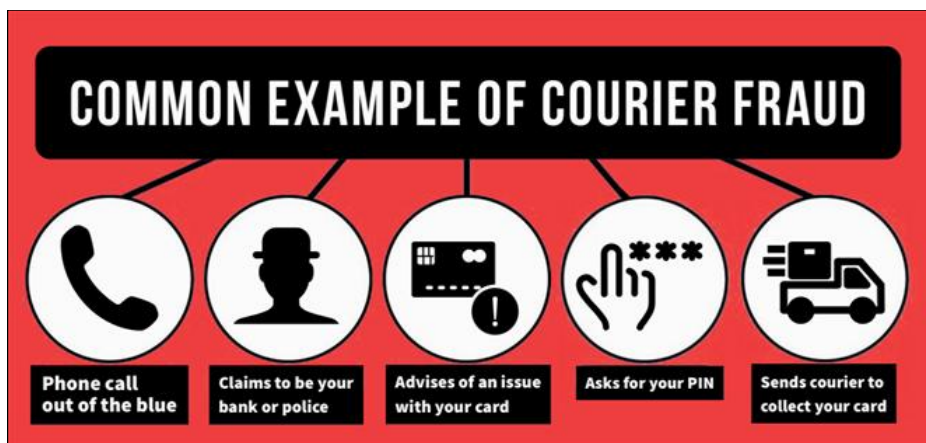
Children under 16 free (when accompanied by a paying adult)

### **Exhibition Opening Times**

Monday - Saturday: 9.30am - 4pm

Sunday: Midday - 3.45pm

# £88K lost to Courier Fraud in Cambridgeshire this month



MEMBERS of the public are being warned against scams which have seen seven people across Cambridgeshire lose almost £88,000 to courier fraud this month (January).

Earlier this month police warned of 'courier fraud' scams where fraudsters pose as a police officer or bank official to persuade their often elderly and vulnerable victims to hand over large amounts of cash.

In six out of the seven instances this month, the fraudster has cold-called the victim by telephone posing as a police officer claiming they had someone in custody as part of a fraud investigation.

The bogus officer told the victim there was an issue with their bank account or requested their assistance with an ongoing investigation. The ultimate aim of the call being to lure the victim into withdrawing cash from their bank and later handing over money to a courier.

On the other occasion the fraudster has claimed to be from the tax office, claiming the victim owed in excess of £10,000 and would be arrested if they didn't pay the outstanding balance. In this instance the victim was told to hand over cash and also purchase thousands of pounds worth of Amazon vouchers from a supermarket.

Criminals are increasingly turning to vouchers as a method of obtaining funds since these are much more difficult to trace than banking transactions.

Between 18 and 26 January five victims in the East Cambs area lost a total of £78,500 and on two occasions in Peterborough, on 8 and 24 January, two people lost a combined £9,000.

Charlotte Homent, Community Protection Manager from Cambridgeshire and



Peterborough Against Scams Partnership (CAPASP), said: “This recent spate of courier fraud is appalling and must be stopped. Not only is the financial detriment significant, these crimes often have a devastating impact on the health and wellbeing of the victims and their families.

“Whilst the latest reported incidents are all in the same two areas, it is likely the scammers are working through a list organised by postcode and therefore there is a strong chance this scam will appear in other areas too. We urge residents to please be vigilant to this and pass the message on so others can be vigilant too.”

Please remember your bank and the police would:

Never ask for your bank account details or PIN over the phone

Never ask you to withdraw money and send it to them

Never ask you to send them your bank cards or any other personal property

Further information about courier fraud can be found on the police website here <http://bit.ly/35Uf6wO>.

If you are suspicious about a telephone conversation you should end the call and contact police via the non-emergency number, 101. Ideally use a mobile phone or a friend's phone or wait at least five minutes before calling to ensure you aren't reconnected to the offender.

To report an incident in action or if you are in immediate danger always call 999.

Community groups and individuals are invited to become a registered supporter of Cambridgeshire and Peterborough Against Scams Partnership. Supporters receive information about the latest scams and funding or training opportunities and are provided with resources to increase scams awareness in their local community. For more information visit [www.cambridgeshire.gov.uk/against-scams](http://www.cambridgeshire.gov.uk/against-scams) or contact Charlotte Homent on 01954 284635.

Cambridgeshire Constabulary's Cyber Security Advisor is available to present to different community groups on how to protect themselves from scams. Enquiries should be made via email to [CyberProtectCambs@cambs.pnn.police.uk](mailto:CyberProtectCambs@cambs.pnn.police.uk).

# The police will never...



**Contact you to ask for your PIN or bank details**



**Ask to withdraw cash to hand over to them for safe-keeping**



**Ask you transfer money out of your account for fraud reasons**



**Send someone to your home to collect cash, PINs, or cards**



## News from Bottisham Medical Practice Patients' Participation Group

**Norovirus** spreads very quickly through environments where lots of people are mingling closely, such as schools, nurseries, care homes and hospitals.

Please play your part in stopping the spread of norovirus this winter – just #Think NORO:

**N** No visits to hospitals, care homes and GP surgeries if you are suffering from symptoms of norovirus - send someone else to visit loved ones until you are better

**O** Once you've been symptom-free for at least 48 hours, you're safe to return to work, school or visit hospitals and care homes.

**R** Regularly wash your hands with soap and warm water, especially after using the toilet, and before eating or preparing food

**O** Only **hand-washing** will prevent spread of norovirus - alcohol hand gels DON'T kill the virus

If you are concerned about your symptoms or need further advice on how to manage the illness please consult your GP or NHS 111 by telephone.

The main symptoms of norovirus are: feeling sick (nausea), diarrhoea, being sick (vomiting).

You may also have: a high temperature of 38C or above, a headache, aching arms and legs.

The symptoms start suddenly within 1 to 2 days of being infected. More information on how to treat diarrhoea and vomiting see <https://www.cambridgeshireandpeterboroughhccg.nhs.uk/news-and-events/latest-news/help-stop-the-spread-of-norovirus/>

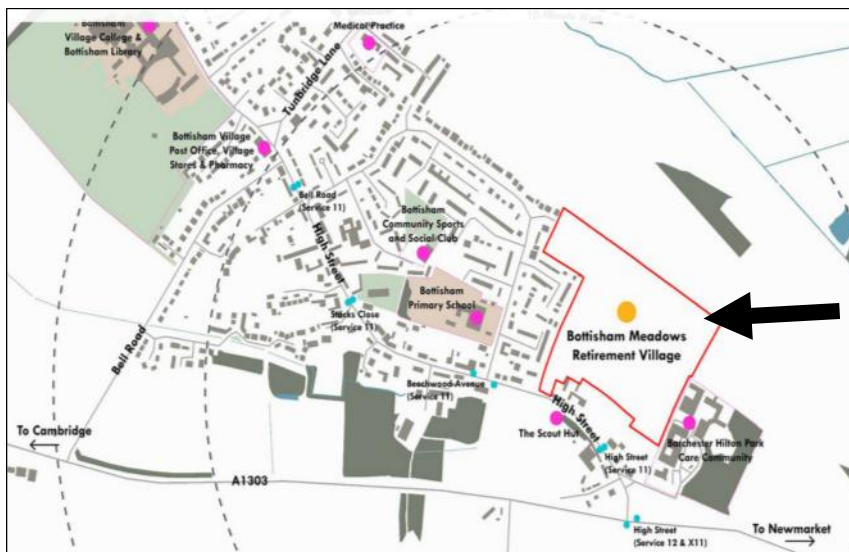
**Thanks:** Our thanks to patients who have already written to support the Practice in their objection to the proposed retirement village and we would welcome more comments. In addition we are hoping to get a petition set up in the surgery for signatures.

**Walks for Health:** The next walks with our accredited walk leader Steve Gilson start at 11.00 am from the surgery car park on 12 and 28 February, there will not be one in March 2020. Do join Steve for a walk he would be delighted to see you. Walks from Anglesey Abbey continue on Thursdays at 10am from the reception area.

**Next Patient Group Meeting:** Next meeting will be Thursday 26 March 2020 at 6.30pm at the surgery.

**Bottisham GPs are very worried that the newly proposed retirement village (see map) will considerably overstretch their practice. Your comments are welcome.**

***Bottisham Patients' Participation Group***



## The Prospects Trust through the eyes of a volunteer

We have been really lucky with the range of support we have had over the years, whether it be promoting us by word of mouth, buying our produce, donations, corporate volunteer days to name a few but we also wouldn't be able to do the work we do on the farm and at the shop without people offering up their spare time to volunteer here at The Trust.

Before Christmas we welcomed new volunteers to the farm and today I sat down with Gina who joined us in November to have a chat about what made her choose to volunteer here and how she is finding it:



### **Why did you choose The Prospects Trust to volunteer for?**

I am interested in horticulture and also wanted to work with people with additional needs. The Trust offers both these things so it was a perfect combination. Plus its close to home.

### **What do you like most about volunteering here?**

I enjoy working with the people here, they are friendly and there is also lots of laughter. I love working outside whatever the weather, just wear the right clothes and you'll be fine. I also enjoy doing manual work. I started in a gloomy winter month, so I am looking forward to working in the changing seasons.

**If you are interested in becoming a volunteer for The Prospect Trust at either our Snakehall Farm site or Unwrapped please call us on 01638 741551 or email [enquiries@prospectstrust.org.uk](mailto:enquiries@prospectstrust.org.uk) for further information.**

## The Swaffhams' WI

Our speaker was Cathy Wright , Project Director for the Trussell Trust Food Bank, in Ely.

This provides food for banks also, in Chatteris, Wisbech and Soham.

Food banks were originally set up,” to provide emergency food and support, for those locked in poverty whilst campaigning to end the need for food banks. Providing, compassionate, practical help, with dignity, whilst challenging injustice.”

Cathy started working at the food bank in 2011 and over the last decade, has witnessed a big rise in the need for emergency food and a sharp increase in mental health problems associated with their clients. Universal Credit, the catch all government benefit, has also caused extra problems, as it demands more money management skills, which for those struggling with life anyway, is far from easy.

Food vouchers, obtained from GPS, health visitors, teachers, social workers and the CAB, have to be presented, in exchange for food, which is typically, enough to feed a family, for three to four days. Some return regularly, in genuine need and sadly, volunteers have to be trained to spot those who are milking the system. Despite threats, none of the Ely staff, so far, have appeared in the Daily Mail!

Those coming to the food bank, are made aware of the other agencies, who might be able to help them- housing, social services, drug and alcohol services and the CAB.

One off cash payments can also be made, which come from monetary donations. Cathy said how incredibly generous the public are in giving an extraordinary amount of food and household goods, especially at Christmas. Ely Tesco's are very good to the bank.

Cathy left with a big bag of goodies, we had donated - coffee, toilet rolls, long life milk and juice, all in great demand.

**Next month, on February 17th, our speaker will be Chris Bailey- a travel agent. All are welcome.**

*Margaret Joyce.*





## VILLAGE GARDENERS

At very short notice, Linda Gasgoigne from Mildenhall, gave us an amusing talk,

- A light hearted look at bird watching. She had been watching birds, since she was a small child

**Bird watchers  
come in two  
species, normal  
and twitchers...**

with her parents and has an encyclopaedic knowledge of them. She had photos of all the birds she mentioned - some rare and exotic and played us, amongst others, a dawn chorus recorded in her garden, nightingales, the now much less rare cranes on the Fenland washes, tawny owls, curlews and pink footed geese over Holkham bay. East Anglia has a huge diversity of habitat- Woodland, wetlands, forests and coastal regions, which of course attracts a huge diversity of birds. The early morning is the time to see most birds and if you want to see something a bit different, phone 'Birdline', before you set out- they'll tell you what's around.

It seems that bird watchers come in two species, normal and twitchers. The later sounded crazy, misogynistic, patronising and not necessarily that good at identifying birds! They call a bird spotted by a woman as a 'tart tick' and probably not believed anyway.

I think we all came into the normal category!

*Margaret Joyce*

**Our next meeting is on February 18th, when our speaker will be Dr Brenda Kyd, on 'Plants to Drugs'.**

---

## COMBERTON RAMBLERS

If you are making a new resolution for 2020 why not join a walking club that will put you together with like-minded people.

The benefits from walking is a good way to get fit. It strengthens the heart and improves circulation by raising the heart rate to a safe level. Walking also gives people the opportunity to spend time in the fresh air and enjoy exploring the countryside.

Comberton Ramblers walk alternative Sundays between 5-7 miles.

New walkers are very welcome to join us with 2 free walks, and if you enjoy our walks we request that you become a member. Annual membership fee is £8.50 per person.

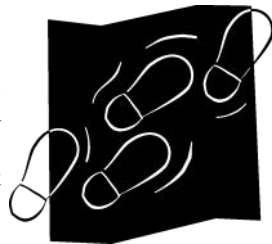
Our full walks programme can be viewed + photo's on.

<https://www.combertonramblers.org.uk>

For further information please contact Stella the Secretary.

Email. [stella.ramblers@hotmail.com](mailto:stella.ramblers@hotmail.com)

Tel 01954 210049



**The Reading Group  
Reads...**

# **Waterland**

**By Graham Swift**

An evocative description of the Fens – grey, wet, mysterious, endless.....

Narrator Tom Crick, a history teacher, was born and brought up in the Fens – “reclaimed land, land that was once water, and which even today, is not quite solid.” His father was a lock-keeper.

The story begins when Tom is a teenager. Something floats into the lock – the body of Freddie Parr. How did Freddy die? Was

the bruise on his forehead caused by the boat hook used to drag him out? Or by something else? A bottle, maybe.

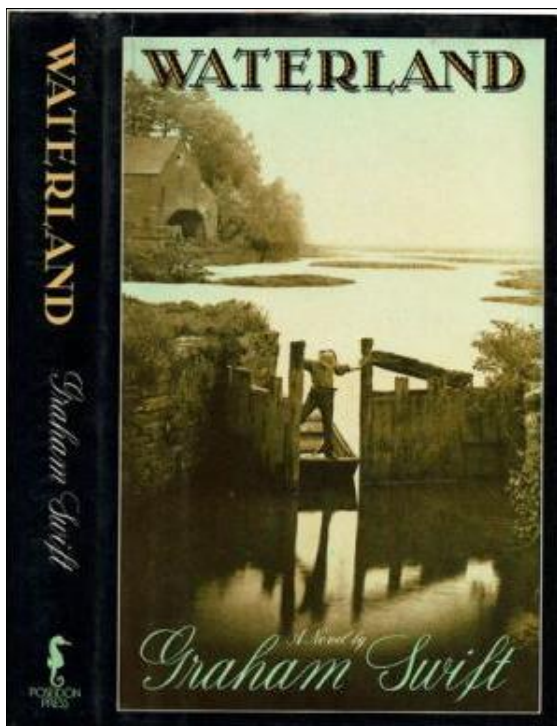
Crick spends most of the novel explaining why his half-brother Dick killed their school-fellow Freddie Parr and dumped his body in the river, under the influence of the ancestral Atkinson ale and under the impression, planted by Freddie, that the baby in the womb of Mary Metcalf, whom both brothers love, is his, not theirs.

Swift tells his story backwards and forwards. Incidents lap over each other; they ripple and splash.

Spanning some 240 years in the lives of its narrator and his ancestors, the narrative line ebbs and flows, diverting into details of the life-cycle of eels or the draining of the Fens or ale-making and madness. Within this, our narrator shows how significant are small local events in determining the tragedies experienced by his characters.

Our next meeting is on Wednesday 12<sup>th</sup> February at 8pm for which we are reading *Monsieur Ka* by Vesna Goldsworthy.

We always welcome new members, so do come along, even if you haven't read the book, as our discussions often drift on to other books that we have read recently.



**Roz Chalmers**





East Cambs will shortly be sending out a questionnaire about buses, walking and cycling. This is to provide the evidence for the District Council's own policies and for our response to the Combined Authority's consultation on buses. Details will be sent to each household and you will be able to respond on-line or by completing the form and posting it back to the District Council or dropping it to a drop box in each village. Public transport, cycle paths and pedestrian safety are all issues which are raised

frequently with John and I, so we will be holding meetings to discuss your views as part of the consultation exercise. You are due to receive your questionnaires between 9-14 March, so we will arrange meetings around this time and advertise them in next month's village magazines.

The Council has also launched an Ideas Forum to collect ideas on how to make East Cambridgeshire carbon zero by 2050. If you would like to submit any ideas, you can do so at - <https://www.eastcambs.gov.uk/climatechange> or by email - [climatechange@eastcambs.gov.uk](mailto:climatechange@eastcambs.gov.uk) or by calling Customer Services on 01353 665555. The Council will be putting together its strategy for discussion in April.

The Council Meeting scheduled for January was cancelled, due to lack of business, so the next meeting is on 20 February. This is likely to be a busy meeting because it is the meeting at which the Council will agree the budget for the year from 1 April, together with items which would otherwise have been addressed at the meeting in January if it hadn't been cancelled. The meeting of the Finance & Assets Committee will be held on 6 February. We hope that the audit of the Council's accounts to the year ended 31 March 2019 will be complete and we will have a revised set of accounts correcting the errors identified during the audit. It is clearly important that we understand the Council's true financial position as at 31 March 2019, including that of its Trading Companies, before we agree the budget for the year from 1 April.

**Our next Councillors' Surgery is on Friday 28 February at 6.30 in Swaffham Prior Village Hall, followed by meet your councillors at the Red Lion pub. Our following surgery will be on Tuesday 24 March in Lode.**



## Wicken Fen News

Visiting the reserve in the afternoon and early evening can be especially rewarding at this time of year. In addition to the possibility of seeing a stunning fen sunset, both hen and marsh harriers can be seen coming into roost on the Sedge Fen from the Visitor Centre window, the Boardwalk hide, or the viewing platform. If you'd like to find out more about wetland wildlife, why not join us for our World Wetland Day Walk on Sunday 2 February? See our weblink below for details.

We're thinking about the new season ahead and making plans for all the work that needs to be done to keep the reserve running smoothly, whether that's greeting visitors, cutting grass, or helping in the office. We'll be recruiting new volunteers for various roles at Wicken Fen soon. Our Volunteer Recruitment event will take place on Sunday 1<sup>st</sup> March, so keep the date and watch out for more details closer to the time.

The café expansion project is going well. We're still on track to reopen in mid-February with a bigger, better building and a wider range of refreshments. In the meantime, we're still offering hot and cold drinks, light bites and cakes and bakes from Doris our mobile café. Don't forget that if you bring your own reusable cup, we'll use less compostable cups, and we'll give you 25p off the cost of your drink. Keep an eye on our social media channels for the launch date of the new café.

**The café expansion is going well, and if you bring your own reusable cup, we'll give you 25p off the cost of your drink**





The first school holiday of the year is fast approaching. Our February half term activities include Wintry Wild Art on Wednesday 19 February and Geocache Challenge on Friday 21 February. We'll also have bikes to hire if you fancy a family bike adventure and drop-in fun activities in the Visitor Centre.

Our adult events include 'The Wild Remedy', an evening with author Emma Mitchell exploring the link between nature and wellbeing (12 March), Fenland Landscape Watercolour Workshop (14 March) and Introduction to Mindful Bird-watching course (25 April, 2, 9, 16 May). See <https://www.nationaltrust.org.uk/wicken-fen-nature-reserve/whats-on> for more information.

*Julia Hammond*



## **Bottisham Village College Adult Learning**

**New Courses for the Spring include:**

**Tango Salon Dancing – Beginners (starts 5 February)**  
**Vegetarian Indian Cookery (starts 27 February)**  
**Creating Glass Jewellery (starts 5 March)**  
**Quick and Easy Italian Cookery (starts 30 April)**

**Saturday Workshops on 29<sup>th</sup> February include:**

**Cook with Your Kids**  
**Digital Desktop Photography (Still Life)**  
**Glass Bracelets, Rings and Brooches**  
**Stained Glass Colourful Suncatchers**  
**Vegetarian Indian Delights (Cookery)**

**Saturday Workshops on 28<sup>th</sup> March include:**

**Dressmaking Workshop**  
**Quick and Easy Indian Cookery**  
**Reactive Glass Jewellery**  
**Spring Flowers in Acrylics**  
**Springtime Flower Arranging**  
**Yoga Workshop**

**Would you like to suggest a course?**

**We are always looking for new ideas, so if you would like us to provide a course which is not offered, or you have skills you would like to teach to adults, please let us know.**

[www.bottishamvc.org/adultlearning](http://www.bottishamvc.org/adultlearning)

Tel: 01223 811372 email: [adultlearning@bottishamvc.org](mailto:adultlearning@bottishamvc.org)

Facebook: BottishamAdultCommunityLearning or Twitter: @CommunityEdBott

# Notes from the Parish Council Meeting

9<sup>th</sup> January 2020

Mr. John Covill (Chair) chaired the meeting with five Parish Councillors and two member of the public in attendance. The meeting started at 730pm.

## **Public participation for items on the agenda:**

Michael Limb pointed out that it was David Greenfield who asked about rubbish bag delivery and Michael Limb and Alastair Everitt who asked about the bin collection calendar.

Michael Limb asked for clarification of where the conservation area is as Cage Hill is partially in the conservation area and one of the proposed rewilding sites is on Cage Hill. Steve Kent-Phillips explained that the area proposed was the bank in Cage Hill that is already left.

Michael Limb proposed that the footpath from Pulpit Corner to Devil's Dyke would benefit from a marker on the Dyke to provide a point of reference for walkers when the field through which the path passes has been cultivated and that this could be considered as a Special Project (see below). Steve Kent-Phillips explained that a bid would need to be constructed and passed to the clerk, but that the proximity to a scheduled monument will raise questions.

## **Reports:**

East Cambs District Council – Cllr Charlotte Cane reported – see elsewhere in the Crier.

### *The Chair invited questions.*

Peter Hart asked what kind of errors were in the accounts. Cllr Cane gave examples of profit and loss accounts not balancing and some figures varying from page to page when they should remain the same. Cllr Cane said that she doesn't think the majority are major financial worries but it is worrying that the system allows these errors to occur uncorrected.

Sandra Gynn thanked Cllr Cane for spotting the problems.

John Covill mentioned that the road surfaces on the fen roads are degrading – a delivery service had refused to use the fen roads unless customers paid extra to cover potential vehicle damage. Cllr Cane urged reporting of pot holes on the relevant system but John Covill said that the holes were not yet officially big enough to qualify as potholes.

John Covill also noted that fly tipping had occurred in the Fen – tyres and black bags at the end of Black Drove and what looked like a bathroom refit in the passing place on Headlake Drove. Cllr Cane promised to raise the issue as a quick response could lead to the recovery of evidence of the fly-tippers identities.

## **Matters arising from the previous minutes:**

The advertisement for applications had gone into the Crier and would be going on the website and the noticeboard shortly.

The Village Hall driveway has been patched as requested.

The clerk read out notes from David Greenfield reporting that that the rewilding

group had been informed of the PC decision to go ahead with three areas but not Coopers Green; they agreed with these decisions. Additionally David Greenfield had produced a village grass-cutting contract and sent it to CGM Group and R H Landscapes and Maintenance Services for quotations to be provided by the end of January, with the results being reported back to the PC at the February meeting. David Greenfield requested that if anyone had knowledge of a third suitable company, their details be forwarded to him.

David Greenfield also reported via email that the refuse sacks were distributed in August/September and would be again in the future.

#### **Accounts for payment:**

These were agreed.

Steve Kent-Phillips noted that a set of lines would be added to the accounts sheet for the Unity Trust Bank Account and also that he would be undertaking the quarterly year end accounts at the weekend.

#### **Village Hall driveway repairs:**

After discussions regarding the need for repairs to the driveway with a Village Hall representative, Martin Mead has patched the potholes as agreed in the last PC meeting but more were appearing with the rain. A suggested solution by Martin Mead would be to replace the driveway surface with porous tarmac (and an underlay) that could cover the track and up to and including the disabled parking bay. This would be done after the Village Hall had undertaken repairs to the patio and ramp and will be discussed at the March PC meeting with quotes.

#### **Cleaning of the ditch between The Beeches and Lower End post box:**

Andrew Camps noted that the ditch between The Beeches and the Lower End post box is becoming clogged with leaves and undergrowth. Steve Kent-Phillips noted that the ECDC will remove the leaves and loose debris but not undergrowth. The clerk is to write a polite letter to the households adjacent to the ditch requesting that they clear it of plant growth and Steve Kent-Phillips is to report the drainage problem to ECDC

#### **Play area:**

An email has been received from Fenland Leisure regarding the spring daisy. They are out of stock at present and are re-ordering. 2 quotes were received – one to install the equipment and one just to supply it. As it would cost £1800.00 to have it installed, the decision was made to go with just supplying of the equipment which will be stored until the spring.

**Martin Mead has patched the potholes as agreed in the last PC meeting but more were appearing with the rain. A suggested solution by Martin Mead would be to replace the driveway surface with porous tarmac....**

**(Martin Mead, take a bow—  
see last month's Crier! Eds)**

### **Special projects:**

The letter regarding appeals for funding had gone to the Crier and is to go on the noticeboard and website. The end date of 12<sup>th</sup> February can be extended if requested, as Paul Latchford has already by email. The letter has also been passed to likely groups directly and it will be discussed at the February meeting.

### **Clerk's report:**

The clerk reminded the PC that in order to pay by BACs through Unity Bank, two of the signatories have to log in and authorise the payments.

The village hall has been provisionally booked for the Annual Village Assembly on 26<sup>th</sup> May 2020, 7-10pm - the clerk will amend the booking to just the main hall.

The requests for grave markers in the cemetery are continuing – currently the clerk is establishing the present owner/s of each plot.

Action: Clerk to update the cemetery costs sheet on the cemetery noticeboard.

### **Parish Councillors' reports:**

Sandra Gynn reported that the village is currently relatively free from uncollected dog faeces and that the bins at the cemetery are working well.

David Greenfield reported via email that the Heating Scheme funding was approved in late December, which is excellent news; however due to the Christmas and New Year break, the next stage of actions are just starting.

John Covill reported that at the football ground, a tree had blown over into the car park and also that the school rubbish is getting scattered in the road on the morning of collection, although it is cleaned up afterwards. Steve Kent-Phillips noted that this is down to the cleaners, not the school.

Sandra Gynn praised the service for the rededication of the church windows as moving and well done.

### **Open question time:**

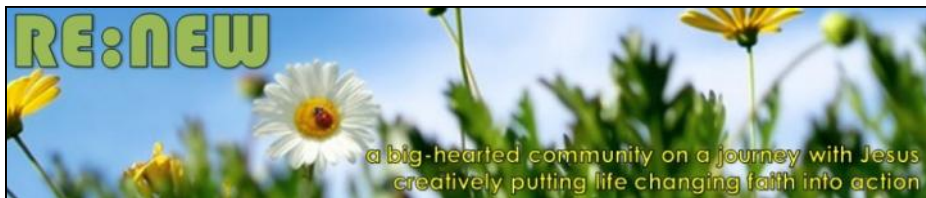
Michael Limb described contacting Darren Hughes of the ECDC recycling department with questions about the recycling bin and said that Darren is happy to meet groups from the village to give information about ECDC recycling. The clerk is to invite Darren Hughes to the Annual Village Assembly.

**If anyone would like any further information on any of the above items, please do not hesitate to contact the Clerk.**

**The next Parish Council meeting will be on Thursday, 13<sup>th</sup> February 2020 starting at 7.30pm in the Village Hall. All are welcome to attend.**

*Jude Griffiths*

Clerk to the Parish Council. Tel 745 106. Email



I'd like to continue with the series of 'living the questions' by posing this question for you to ponder and respond: If you are part of a church family, "Why are you part of a church family?" and if you are not, "Why are you not part of a church family?"

Your responses will be many and varied I expect, and I am interested, so feel free to share your responses with me. If your response to the question 'Why are you not part of a church family?' is 'because I don't feel I'd be welcome or accepted as I am', I want to say something to you now that I really hope and pray you will hear deep in your being.

Firstly, I'm sorry. I'm sorry that you have formed that opinion of the church. I'm especially sorry if something that you have experienced in church or something a Christian has said to you leads you to question whether there's a place for you or whether you will be accepted as you are.

Every month, I say in this article that you would be welcome to join us at RE-NEW Church, but I am increasingly conscious that not everyone feels included in that broad invitation or welcome.

In 1 Corinthians 12.12-27, the metaphor of a body is used to describe the Church (by the way, when I say 'the Church', I mean the people who gather to worship not the physical building that they meet in). The message is, that we are simply incomplete when one part of our body is missing, or when one part of our body is considered less honourable, or dispensable.

When someone who desires to follow Jesus and be part of a church community keeps away for fear of not being welcomed / included, it's like part of our body is missing and therefore the body is less resilient and able to cope with the storms of life when they come. Equally, if an established member of a church community excludes another person from being part of the church community, it is like one part of the body cutting off another part of the same body.

Anyone with a physical disability knows how challenging daily life can be. It is physically so much harder to stand and do the things we are called to day by day with a part of our body either missing or not working effectively. The same is true on a spiritual level. With parts of our body (the Church) not connected for whatever reason, the family of faith is incomplete. This saddens me. If you have the desire to be part of a church family but don't feel you'd be accepted, I pray you'd have the courage to step into a church. Challenge me, enable me to prove to you that my words are true and step through the doors of Bottisham Primary School on Sunday morning, join us at RENEW Church. You are welcome.

***Revd Alan***

# Boxing Day Hockey Match 2019

Despite the downpour 30 minutes before bully off, Swaffham Prior were represented by a full complement of players for the annual Boxing Day hockey match. It was great to welcome some new players this year (even one who offered to stand in goal!), and they soon fitted in with the regulars. Swaffham Bulbeck struck fast and furious within 5 minutes of the start and scored what was to be the deciding goal in the 1-0 match. Swaffham Prior went from strength to strength with the team working increasing well together and improving with each quarter; however they could not quite get the reward for all their efforts. Congratulations to Swaffham Bulbeck on their win, the new trophy is sitting in the Black Horse, but we hope to bring it home to the Red Lion next year! Many thanks to all those that played, and to David Turner for organising the Bulbeck team and preparing the pitch. Special thanks also to James Lankfer for stepping in to referee this year, James did a great job controlling and channelling the varied strengths and skills of both teams. It is lovely to see the large touchline crowd each year and a magnificent £705 was raised for MAGPAS.

*Mandy Kingsmill*



*Photo: Sue Wade*

## Services in the Anglesey Benefice in February

Sunday 2 February	8am	Holy Communion (BCP), <b>Swaffham Bulbeck</b>
	9.30am	Share the Light*, <b>Quy Village Hall</b> Share the Light*, <b>Swaffham Bulbeck</b>
	11am	Share the Light*, <b>Bottisham</b>
Wednesday 5 February	8pm	“C by C” (Short candlelit meditative service), <b>Bottisham</b>
Sunday 9 February	9.30am	Holy Communion (VC), <b>Swaffham Bulbeck</b>
	11am	Family Communion, <b>Lode</b>
Sunday 16 February	8am	Holy Communion (BCP), <b>Bottisham</b>
	9.30am	Holy Communion (CW1), <b>Quy</b>
	11am	Family Service, <b>Swaffham Prior</b>
Sunday 23 February	9.30am	Children’s Church, <b>Lode</b> Morning Worship, <b>Quy</b>
	11am	Holy Communion (CW1T), <b>Swaffham Prior</b>

[Ash Wednesday](#) 26 February

7.30pm Holy Communion (CW1), **Quy**

**\*#Follow the Star** service – all welcome

*The ANGLESEY GROUP OF PARISHES comprises: Holy Trinity, Bottisham, St Mary’s, Quy, St James’, Lode, St Mary’s, Swaffham Bulbeck and St Mary’s, Swaffham Prior. You are welcome to attend services anywhere in the benefice.*

*Our Vicar is Rev’d Sue Giles; Tel: 01223 812726; [suethetic@btinternet.com](mailto:suethetic@btinternet.com)*

*Detail of services and events can be found on [www.angleseygroupparishes.co.uk](http://www.angleseygroupparishes.co.uk);  
[www.facebook.com/angleseychurches](https://www.facebook.com/angleseychurches); [www.achurchnearyou.com/](http://www.achurchnearyou.com/)*

*For weddings and baptisms please contact: [admin@angleseygroupparishes.co.uk](mailto:admin@angleseygroupparishes.co.uk);  
For funerals please contact the vicar directly.*

## Dates for Your Diary February 2020

Sat	1	Crowns & Gowns, Lady Chapel, Ely Cathedral (to 15 May) [15]
Wed	5	Coffee Morning, 2 Cage Hill, 10.30am-12 noon [3]
Wed	12	Book Club, Kent House, High St, 8pm [22]
Thu	13	PC Meeting, VH, 7.30pm [28]
Fri	14	
Sat	15	
Sun	16	
Mon	17	WI, 7.30pm, VH [20]
Tue	18	Village Gardeners, 8pm, VH [21]
Wed	19	
Thu	20	<b>Crier Copy Deadline</b>
Fri	28	DC's Surgery, VH, 6.30pm (continuing in Red Lion) [23]

*Numbers in square brackets indicate page number of an accompanying article*

Club	Contact	Tel.	Date	Time	Place
FOSPS			2 <sup>nd</sup> Mon of Term	8pm	Village School
Beavers, Cubs and Scouts	Tim Doe	01223 861083	Variable		
Reading Group	Brenda Wilson	743937	1 <sup>st</sup> Weds of month	8:00pm	Kent House
Village Gardeners	Margaret Joyce	744390	3 <sup>rd</sup> Tues of month	8:00pm	Village Hall
WI	Pat Cook	742224	3 <sup>rd</sup> Mon of month	7.30 pm	Village Hall