



# The Swaffham Crier

Volume XLIV Number 12

December 2020



## Editorial

“That was the Year that Was,  
It’s over, let it go.  
Oh what a year that was....”



...although probably nothing whatsoever compared to the year to come! But anyway, here we are nearly at Christmas, and some very interesting articles in this month’s issue. Despite the inroads of Covid, the Village Album Project is progressing again (see our Centre pages) and at the same time (see Letters) we have had recourse to be looking things up about old times in Swaffham Prior in a now rather faded booklet printed in 1988 called “The Changing Face of Swaffham Prior” which details the usually far more interesting historic uses of the buildings and spaces of the village. We’re hoping to get this restored (and perhaps updated) in the New Year, if not by scanning technology, then by volunteer typists, if we can find them!

Then there’s Bell Ringing: many of you will have heard the single tolling of a St Cyriac’s bell on Remembrance Day (the only ring since March) and they are now looking for new recruits for when Covid restrictions are lifted. The Heating Project has gone a bit quietish (only two article in this issue!), but meanwhile grand new plans for rejigging our travelling choices into Cambridge are coming to the fore, and there’s a deadline of December 18 to contribute to the consultation process. What would make you want to use public transport more? Not staggering up Cage Hill to just miss the speedy “streamlined” service whizzing down the bypass to transport-hub Cambridge North, where we didn’t want to go anyway, that’s for sure!

## HAPPY CHRISTMAS, ALL OUR READERS!

From all at the Crier,

*Caroline & James Matheson, Pat & Peter  
Cook, Alastair Everitt, Robin Scovil, Celia Tyler and Pam Waters*

**Cover Picture:** *Pre-Dawn Geese Skimming Water*, a watercolour sketch from the fens, by **Mike Barker**

### Regulars

Letters	2
Our Reporter	4
Bon Mot	7
On the Wildside	10
Let the Bells Ring Out	14
Julie’s Recipes	18
Village Gardeners	19
Book Club	20
ECDC Report	23
Crossword	24
PC Minutes	26
Renew Church	29
St Mary’s	30

### News, Views & Reviews

World’s Christmas Lunches	3
Heating Swaffham Prior	6
Travel to Cambridge	9
Hoggywobbles	11
School Gardens	13
Village Photos Project	16
ACRE - Home Energy	19
Platinum Jubilee	21
Air Ambulance	22

### For Sale/Wanted

Fosters Mill Xmas gifts	8
CLT Home to rent	9
Freecycle	20



## Letters to the Editors



Dear Editors,

### **Clement Mark Wadham**

I am writing to ask if you know anyone in the village who might have any handed down stories about Clement Mark Wadham who with his family lived in Swaffham Prior 100 years ago. I am researching him. I have been to the graveyard and have found his father (Mark) and other family members but I could not find Clement. I attach my notes so far in the hope that there may be other information available that I can add.

#### **Clement Mark Wadham - BURRELL - 883**

Clement Mark Wadham was a prominent threshing contractor who was based in Swaffham Prior. He was born in 1882 and had 2 sisters being Dorothy born in 1886 and Daisy in 1890. His father was Mark Wadham and his mother Hephzibah Wadham. In 1891 they lived in the Red Lion, Swaffham Prior and Mark was a publican, machinist and farmer. Mark was born in 1848. Clement died in September 1965, he left the sum of £4,622 to a solicitor and Kathleen Gathercole who was simply stated as being a married woman.

By 1901 the Wadhams had given up pub life and Mark was a farmer, his son was a farmer's son and they lived at 2 Rose Cottage, Swaffham Prior.

Clement married in 1902 and he and his wife, Jeanie, had two children Thomas and Joseph and by 1911 they were living in High Street, Swaffham Prior and Clement was a thrashing machine proprietor. Engines owned by Clement were; (8 in total)

Burrell 883 - 8nhp single cylinder T. E. new on 15.8.1881.

This was the last of a batch of 20 unsprung, single drive engines. The working pressure was 120psi and they had a 4' 6" diameter flywheel.

Burrell 1243 - 7nhp single cylinder T. E. New on 8.10.1886

This engine was part of a batch of 7T type engines, unsprung and single drive.

Burrell 2106 - 8nhp single cylinder T. E new on 25.7.1989

This engine was one of a batch of 133 built with a working pressure of 140psi. They were unsprung and double geared. Of the 133 engines built, 79 went to customers in New Zealand.

Fowell no. 77. Built for Wm Howard, Litlington, Cambs, TE7HP, delivered 20 Jul 1895, Registration no CE 8048 owned by 1921 by Clem. M Wadham, Swaffham Prior

Fowell no. 77. Built for J P Charter, Comberton Cambs, TE7HP; delivered Jul 1901, Registration no CE 8060 owned later by Alexander Charter, Comberton, bought in Jul 1918 by Chapman Bros, Comberton and about 1928-30 by Wadham, Swaffham Prior

Marshall 25382

Another unidentified agricultural registered CE 8047 and an unidentified Fowler registered CE 8049.

By 1939, Clement Mark Wadham was living at Kent House, Swaffham Prior with his wife and Charles M Wadham who was a smallholder.

Thank you for any help you might be able to give.

Best wishes

***Jeffrey Shackell***

Thatched Cottage, Lew, Bampton, Oxfordshire, OX18 2AZ

Tel. 07971 985302

**Eds' Note:** Living in Clem Wadham's old house, Kent House, we know a bit but we're hoping that others may be able to help with more information. There may even be people around who knew Clem? Please either contact Mr Shackell directly or via us as we'd be interested to know too.

What we do recall from what we've been told (and which might jog some other memories) is that:

- At one point, as well as his agricultural machinery business, he ran a fish and chip shop probably from what is now our workshop.
- According to the Village publication "The Changing Face of Swaffham Prior" (1988) he also used part of the house for brewing beer.
- He sold the house and its farmyard in the early 1960s to Mr J.R.C. Webster who converted the farmyard into the Civic Trust award-winning courtyard development that is there today.
- We had a visit a few years ago from someone who as a child used to come round and help Clem out and we'd be very grateful if they could get in touch again with more information.

*Fancy something a bit different  
this Christmas?*



## **CHRISTMAS LUNCH ...AROUND THE WORLD**

### **SWEDEN**

Roast ham, meat balls, smoked sausage

### **JAPAN**

Fried chicken (especially KFC!)

### **PORTUGAL**

Cod and potatoes

### **GERMANY**

Duck, stollen

### **AUSTRIA**

Fried carp

### **NORWAY**

Steamed sheep's head

### **ICELAND**

Smoked lamb, Christmas porridge

### **JAMAICA**

Curried goat

### **PUERTO RICO**

Whole suckling pig

### **AUSTRALIA**

Beach BBQ

## From our Reporter at the Parish Council Meeting

**The Cemetery** was one of the top items at the October Meeting. £1921 pounds had been paid to remove some cemetery trees. Recently I was fortunate to witness a very important respectable worthy of the village feeding the most glorious bonfire of the trees' remains. This was saving us and the PC about £200-330. How I enjoyed it, reminding me of the good old days of bonfires, especially of Autumn Leaves. How very poetic it always was. But of course it is now all terribly wrong. No-one in the village or even the horses were disturbed by the magnificent clouds of billowing smoke spiralling into the air.



**Grave Stone Stability** is still of major concern for so many PC Clerks in the local area. They keep on threatening to fall over. Various training courses or checks are on offer and CALPAC have added a management course to the list of courses which they run. Steve suggested that Jude should attend such a course when one next takes place. I wonder why Grave Stone Stability has suddenly become such an urgent matter in Cambridgeshire.

Sandra raised her regular concern that **dog poo bags** are still being left in the cemetery bins at the far end of the cemetery. She found it deeply unpleasant to pick these out. And she is right. Even though many have taken up a new hobby during lockdown this is not the best to choose. This problem has been bugging Sandra for a good part of the year, and when it was first raised a PC member suggested putting up a dog poo bin. Not at all, said Sandra, put up a notice directing people to the bin at the end of Coopers Green.

This may be a bit hard for some. Just consider a little old lady ("Little Old Ladies" always evoke more sympathy than a "Little Old Man", inevitably always a bit grumpy). Anyway, we have this little old lady with her little dog Mopsy. She always stops at the Coopers Green bin and says "Do it now". Mopsy never does. But later you can guess where Mopsy does it. Mopsy is scolded but the dog does not give a fig. So the little old lady has two options – happily trot back to Coopers Green, or drop it into the inviting bin.

Now that the Heating Project has been taken over by the CCC, David and Emma have linked up with the **CCC Greensway Plan**. They are now part of the Local Transport Group chaired by Jonathan Cook of Fosters Mill. It seems only 19 people from Swaffham Prior responded to that very glossy consultation brochure several months ago. You may remember it had the most misleading illustrations. It also proposed closing the slip road to traffic and reserving it for cyclists and walkers. It was difficult to respond to such a ridiculous suggestion. But it seems there has been an amendment and it is now proposed that the road should be narrowed and the footpath widened. This is of course influenced by that **all-powerful and righteous cycling lobby** which is causing such havoc in

so many towns throughout the nation. And they have such a lot of money to spend.

One new proposal is that cyclists should be able to ride one metre apart, side by side, and decide when it is safe for a car/lorry to pass. This is a serious suggestion and you may think it will not be taken up. But I came across it in practice only the other day approaching Prior from Bulbeck. The traffic had slowed down until we reached the slip road. And then one saw what the problem was. Two cyclists, **dressed all in black**, were riding side by side with the man having an outstretched arm to keep the lady at bay in the middle of the road. We went down the High Street like this with the bus following patiently behind, until we reached Lower End. Everyone had to stop to allow an oncoming car to come though. But, not the male cyclist who shot onto the pavement and rapidly road past all those entrances without thought of child, pet, car or anyone else. Maybe the suggestion that cyclists should have number plates is not so daft.

But the **Show Stopper at the October Meeting** must have been Charlotte Cane's latest report on accounts of the East Cambs Trading Company (ESTC) on which Charlotte confessed to having some misgivings. Ah! Ah! Paul was onto it like a shot and wanted to know her concerns. Charlotte said she had to be discreet but what had originally been a profit forecast had changed to being a predicted loss of half a million with a continuing negative balance sheet. Paul asked when this would change and was told that the directors of the company were very confident they could **return to profitability in 4-5 years**. Charlotte would have liked to have probed further. Paul continued his interrogation by asking who would carry the can and the cost if it all went bottoms up. It seems that our usual very careful and successful ECDC would be responsible for the main losses having already lent the initial money on top of a recent later loan. I hope CCC is taking note. But read all about this and everything else and more in Jude's excellent minutes.

So what is going to happen in the next few weeks. Is Covid -19 going to have a worse effect than the "No Deal Brexit" which seems likely, even though Boris in October said that Britain should have "no fear" of leaving Europe without a deal? We shall soon find out. Meanwhile one piece of local good news is that the walls are almost up on the Village Hall extension and very shortly the roof will be added. Life does go on.

**...that all-powerful and righteous cycling lobby which is causing such havoc in so many towns throughout the nation. And they have such a lot of money to spend.**

*Alastair Everitt*



# Community Heating Project

## Planning Permission Granted for our Heat Network!

Last Wednesday (25<sup>th</sup> November) planning consent was granted for the heat network by Cambridgeshire County Council planning department.

We are pleased to share this news with the 160+ households that have expressed an interest in joining the heat network. Planning consent secures our progress to the next stages involved in delivering our high temperature, low carbon, village heat network.

The heat network will enable households in the village to disconnect oil boilers, oil tanks and use existing central heating systems with the renewable heating supplied. To find out more about how your home can connect, see the info below, or contact Janet, [info@heatingswaffhamprior.co.uk](mailto:info@heatingswaffhamprior.co.uk).

### Design and Planning

- Over 90 homes have had a design-survey in the last six weeks
- Household design-surveys will be available Thurs 3<sup>rd</sup> – Tues 8<sup>th</sup> December

### Legal and Tariff

- The final Heat Supply Agreement (customer contract) is available online [www.heatingswaffhamprior.co.uk/HSA/](http://www.heatingswaffhamprior.co.uk/HSA/), following our second consultation with the village.
- The proposed tariff is under review, an update will be announced soon

---

## Saturday + Evening design-surveys available

Are you still thinking about joining the heat network, or want to find out more?

We will be hosting 15-minute design-surveys (by phone / zoom) in December, book via: [www.heatingswaffhamprior.co.uk/designnow/](http://www.heatingswaffhamprior.co.uk/designnow/) or 07525 943 420 (M-F, 12-7pm)

- Available Thursday 3<sup>rd</sup> December – Tuesday 8<sup>th</sup> December ONLY
- Speak with an engineer about connecting your home
- There is no obligation to join the heat network

**Janet Hall**

## ... and comments from the Community

Please understand I have no objection to the proposed District Heating Plan if used in new developments such as the 3,000 dwelling in Newmarket Road, or in Waterbeach for the 6,000 (or is it 12,000) houses, etc. But it does seem pointless for a retrospective village heating plan. What was alleged to be “Easy Peasy Japanese” when first proposed has turned out to be extremely complicated and very expensive. Costs have risen from £2-3 million to £6-7 million – with no explanation.

Meanwhile CCC have taken over the whole project and are pulling out all the stops with some very attractive, and expensive, invitations coming through the door regularly. The last so far, being a very attractive book mark. The most important is the A4 sheet on “Your Questions ... Answered”. And for the most part they have been answered giving people almost everything they want. It is almost as if they are saying “tell me what you want and you’ll get it. But please sign up.”

So let's look at the questions. Number One – “Could electricity be used as a comparator to control energy pricing?” The answer is a fudge worthy of our MP. Number Two - Can one “quit the contract before the house is connected?” The answer is “Yes”. How can you build a business on this sort of agreement? Would any sales manager accept such an order from their sales people? Surely a contract involving such a lot of money is a contract which must be kept. What happens if most people quit?

And so it goes on with the final date for signing having shifted from October 2020 to January 2021.

Obviously they do need the numbers in sufficient numbers in order to get a further tranche of several millions. Without these the scheme is likely to be kaput. But I have a solution to offer, at no charge.

The CCC should send a non-returnable cheque for £1,500 to every person who signs up and I guarantee they will get the signatures they need for those extra millions. And this could all be costed in quite easily. Go for it I say and become very popular over night.

*Alastair Everitt*



### **BON MOT NUMBER 112**

“Mistakes are a fact of life.  
It is the response to error that counts.”

*Nikki Giovanni (1943- )*





# The Prior's Flour



CHRISTMAS PRESENTS FOR FAMILY & FRIENDS  
BY MAIL ORDER (UK ONLY)

WE HAVE CREATED TWO TEMPTING PRESENT IDEAS FOR  
FOODIE FRIENDS & FAMILY:



## BREAD BAKERS' DELIGHT

1.5KG BAGS OF THE PRIOR'S WHITE, WHOLEMEAL,  
RYE AND SPELT FLOURS

WITH A CHRISTMAS CARD CONTAINING YOUR GREETING

## FOODIES' DELIGHT

1.5KG BAGS OF THE PRIOR'S PLAIN, SELF RAISING FLOURS,  
BAGS OF OUR OATS & MUESLI

WITH A CHRISTMAS CARD CONTAINING YOUR GREETING

ORDERS WILL BE DISPATCHED BY UK MAIL CARRIER (UK  
ADDRESSES ONLY) TO ARRIVE FOR CHRISTMAS WITH INSTRUCTIONS  
NOT TO OPEN UNTIL CHRISTMAS DAY!

SEE [WWW.PRIORSFLOUR.CO.UK](http://WWW.PRIORSFLOUR.CO.UK) TO ORDER  
YOUR PRESENTS OR COME TO THE MILL SHOP





## GREATER CAMBRIDGE PARTNERSHIP

## Do you travel into Cambridge?

Improvements to travel into Cambridge from the East are being explored by the Greater Cambridge Partnership (Cambridge City Council and South Cambridgeshire District Council working together) and they have started a public consultation that is not limited to their residents, and includes all who travel, by whatever means, into Cambridge. As Cambridge employment expands there will be more people travelling into Cambridge, and this is a vision for the future.

They are considering short-term and long-term improvements. From moving the Park 'n' Ride site, or an underpass under Cambridge airport, to opening up Cambridge East, a rail station at Fulbourn or Six Mile Bottom. Although five options have been put forward in the brochure, there is no reason why you don't make your own observations and suggestions. For example, would a Park 'n' Ride site to the east of the Quays roundabout be appealing? Even though you may only use a car to travel into Cambridge, it will still be useful to let them know why you do so, and what may tempt you to change your mode of travel.

All the information, including ways in which you can respond, is online at [www.greatercambridge.org.uk/CEA-Consultation](http://www.greatercambridge.org.uk/CEA-Consultation). If you have difficulty in accessing the internet, or want a hard copy, then please contact Charlotte Cane or John Trapp, your District Councillors, whose telephone numbers are 07976 607512 and 01223 812120 respectively.

The consultation closes at **midday on Friday 18 December 2020**.

### **\*\* Unexpectedly available\*\***

**Two bed home to rent - max £640/  
month from March 2021 (possibly  
earlier by agreement).**



Following the recent call for applications one of the prospective tenants has decided not to take up the five-year tenancy from next March. We now unexpectedly have a two bedroom home available to rent on Rogers Road in Swaffham Prior.

If you are interested in applying for a home, please download the form and allocations criteria from the village website [www.swaffham-prior.co.uk/pc/CLT.html](http://www.swaffham-prior.co.uk/pc/CLT.html) or email [emmalindseyfletcher@gmail.com](mailto:emmalindseyfletcher@gmail.com) for the forms to be sent to you.

Applications are to be submitted **hard copy** through the letterbox at 50 High Street, Swaffham Prior (yellow house, grey door opposite the churches) **by 31<sup>st</sup> December 2020**.

## On the Wildside:

### A Partridge in a Pear Tree

So I was thinking which animal to do for this Christmas Crier addition. Of course I've done robins in the past as they are so often associated with this time of year. With their cherry red breasts, hopping about in the snow, you can see why. But I didn't want to pick something cliché. So I give you the humble Partridge as my offering for this month. After all "A partridge in a pear tree" is of course one of the offerings in "The 12 days of Christmas" song. I actually think they are a rather undervalued bird and appear to me, to have very character full personalities as they run about our fields and over the roads in their little families, with all the grace of a drunken Father Christmas.

Partridge used to play a very important role in historic feasts and was often one of the meats used in Tudor meat pies served to the Tudor royals. Poorer Victorians also used to have Partridge at Christmas as they could not afford goose or turkey and Partridge was readily available to hunt in the countryside.

Red-legged partridges are most numerous in England, especially in the east where we are, with some birds in the Welsh borders and in eastern Scotland too. They are usually seen in groups in open fields or busily scaring the day lights out of us humans as they run across in front of the car and then decide to turn back once their half way across the road. Rather manic and hysteric looking birds but also very endearing and silly...perhaps you just either love them or hate them? They have rather plump chicken like bodies with a small head so that they are able to run away from predators. Their life span is surprisingly short at an average of two to three years. But to make up for this high mortality rate, they reproduce at high volumes with large clutches of eggs. They will search for food on the ground but if threatened will fly away in their flocks. However they are not strong flyers and cannot fly for any prolonged duration of time. They are social birds and tend to stay as large groups made up of two parent and the chicks. When the young have reached maturity, they will leave to make their own conveyes.

There are over 40 different species of Partridge worldwide but in England the red legged partridge and the Grey Partridge also known as the English Partridge are the most common. They are a seed-eating species, but the young in particular take insects as an essential protein supply. During the first 10 days of life, the



young can only digest insects. A female partridge can lay up to twenty eggs in one ground nest, however it is rare for so many to survive to adulthood. Whilst we think of these birds as plentiful- they sadly like so many of our wonderful wildlife are now declining.

The Grey Partridge is vulnerable to predators at all stages of its life cycle. During the breeding season, unattended eggs can be taken by corvids, rats, hedgehogs, cats and wild boar. The eggs and incubating female are also at risk from larger predators such as foxes and badgers. Fledged young and adult birds can be taken mainly by foxes, hawks, harriers or buzzards. For protection against predators, the Partridge relies on its cryptic plumage, vigilance by living in family groups or coveys as they are known) and availability of vegetation as cover in which to hide. This can be a particular problem in modern agricultural landscapes, especially after harvest, when very little cover may remain, and in snow. Though common and not threatened, the partridge in general appears to be declining in numbers in some areas of intensive cultivation in England. This is probably due to a loss of breeding habitat and insecticides harming insect numbers, an important food source for the species. Their numbers have fallen in certain areas of Britain by as much as 85% in the last 25 years. Efforts are being made in Great Britain by organizations such as the Game & Wildlife Conservation Trust to halt this decline by creating conservation headlands.

So next time you see a group of manic partridges running in front of your car, rather than curse at them, just be grateful that we have them at all. As like every creature in our countryside, they all play a vital role in the natural ecological balance. And if one disappears, another will soon follow until the balance can no longer be maintained.

*Saffra Monteiro*

---

## WELCOME TO HOGGYWOBBLES!

Hi Folks- I know that some people in the village don't have face book so here is a little piece on my Official new Hedgehog Rehab Hospital for those of you that can't see my new page. As many of you know, I have been caring for hedgehogs for a number of years now from my house in the village. The time felt right to make an official page and Rescue name- And so welcome to Hoggywobbles. I will still help where I can with hogs in the village and always rescue hedgehogs that need it- however Hoggywobbles will be for the best part, a first of its kind- Convalescent Hedgehog Hospital. This means that other local rescues I work alongside that are better equipped to deal with the really sick acute cases, will do. However the difference will then be that they will send hedgehogs over to Hoggywobbles to continue their recovery which can take weeks to months and is often a lengthy process including release. We hope that Hoggywobbles will create a system whereby, other rescues will be able to take in more sick hogs and have a faster turnaround because all the other hogs that need secondary care will be getting cared for at Hoggywobbles instead, rather than blocking up vital places.

I am not able to fund the cost for caring for the hogs anymore and so I must like



most other rescues, now turn to the kindness of the community and ask for donation in order to fund their care. We should be very proud of the fact that in our area, we are well serviced with hedgehog rescues and that Hoggywobbles will be the first of its kind to specialize in the recovery care of hedgehogs. I am currently still caring for hogs out of my home by myself which is less than ideal and means I cannot have a team helping me. And being only one person, means I have my limits. But we have a big plan which will involve having an independent building created with running water and electricity and public access. This will become the hospital over time and will increase my capacity ability for Hoggy patients by over triple! Which means more hedgehogs saved. Once we have a building, I will then be searching for local folk who wish to volunteer at the hospital to work with me. I will train them up with how to handle and care for the hogs and create a Rota system so that the hospital can run right through the year, even when I am away. Of course this big plan, will not be cheap and we will be looking to our local community once again to donate toward the fundraising for the Hoggywobbles building. But I'm sure all animal lovers and those who appreciate our wildlife and countryside will agree that this is a really important service for one of our most character full but also most endangered mammals.

There are many ways you can help us- second hand donation are welcome at my address. Newspaper that we use for bedding can be placed in the sheds on the high street. And if you would like to donate money to us- our pay pal details are [www.paypal.me/hoggywobbles](http://www.paypal.me/hoggywobbles).. If you do not wish to use pay pal then please contact me for bank details for writing checks or doing direct transfers. Or for folk in the village, please feel free to pop cash donations through my door, but please label them as donations for Hoggywobbles. If you would like to donate toward the building fundraiser rather than towards our every day food and running costs for caring for the hogs then please state this with the donation you give us. Also if you have any suggestions on services or people or items you may feel could help us with the big plan, then please do get in contact with me. Lastly if you would like to donate items we need for caring for the hogs, then please visit our Amazon wish list- [https://www.amazon.co.uk/hz/wishlist/ls/17Y0VCGZO7TIR?ref=wl\\_share](https://www.amazon.co.uk/hz/wishlist/ls/17Y0VCGZO7TIR?ref=wl_share)

You can select items and they will be sent directly to our address. But please be aware that market place items cannot be sent direct to us. If you would like to fundraise for us, please let me know too. Also I would be grateful for those of you that I have helped with hedgehogs in the past, if you are able to leave a review on our Hoggywobbles page, then please do.

Thank you for your continued support and together we hope to get a proper building created for our spiky friends. We also plan to run educational talks from the building and public visits down the line. Possibly even day courses on basic hoggy care but let's see how it all goes.

Merry Christmas from Hoggywobbles.

*Saffra Monteiro*

---



**School Gardens  
and Pond in the  
Autumnal  
Sunshine**

Our school children have been outside using the school grounds more than ever this year. It has been an advantage to have the classrooms with external doors to keep classes in their bubbles. Our vegetable garden and nature garden have been a success this year. Even this week there are groups making dens and supervised fires in the nature area.

Unfortunately parents and carers cannot enter the school grounds at present so I hope these pictures will remind them of our lovely surroundings. Keep planting!

*Sue Wade*  
School Sunday gardener!



# LET THE BELLS RING OUT

On Remembrance Sunday we were able toll a single bell for ten minutes in memory of the fallen. It was the first time that any of the bells at St Cyriac's had rung since March and was specifically allowed for in national guidance on Covid-19.

Like many activities nationally, bellringing has been severely restricted by the pandemic and was completely banned during the first lockdown. Under agreement reached between the Church of England and the Central Council of Church Bellringers, and subscribed to by the Churches Conservation Trust, there was a brief period between lockdowns when it was theoretically permissible to ring a few of the bells (maintaining a 2 metre distance between each ringer) for very limited periods (no more than 15 minutes). However, local circumstances also had to be taken into account and it proved impossible to ring at Swaffham Prior during that brief window of opportunity.

Depending on the nature of future restrictions, we are now hoping that it may be possible to have some of the bells ringing on Christmas Day.

## **A Sincere Thank You**

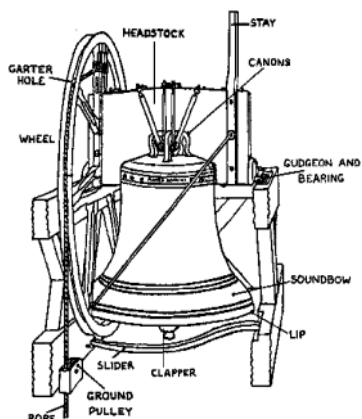
For the last fourteen years and ten years respectively, the management of the ringing at St. Cyriac's has been in the very capable hands of Alastair Everitt (as Tower Captain) and Sharyn Robinson (as Tower Secretary). Both have now decided that this is the time to stand down from their roles. We would like to thank them very much for their work and dedication over those many years in keeping the bells ringing.

John Chalmers has now taken on the role of Tower Secretary and will be the first point of contact for any queries about the bells. John not only rings at both Swaffham Prior and Swaffham Bulbeck but is also the steeplekeeper, responsible for the maintenance of the bells, clock and chimes at St Cyriac's. He may be contacted by telephone on 01638 742004 or by email at [swaffhampriorbells@gmail.com](mailto:swaffhampriorbells@gmail.com).

Gareth Davies from Reach has become the new Tower Captain.

## **Recruitment**

Bellringing always needs new recruits to what is a fascinating and challenging activity for people of all ages. Clearly, training is not possible at the moment but, when we are able, we will be looking to find new volunteers from the village who would like to have a go at learning to ring the bells. This may not be for several months, but if you or your children (aged 11+) are interested please drop us a line on [swaffhampriorbells@gmail.com](mailto:swaffhampriorbells@gmail.com). We will get back in touch as soon as practicable.





In the meantime, if you have time on your hands, you may be interested in a talk that Gareth gave in July as part of the Churches Conservation Trust's series of online seminars. 'The Ringing Isle' explains the long history of English bellringing. If you watch to the end you will find that it includes a reference to Swaffham Prior and a short recording of the bells. It is available on YouTube at <https://www.youtube.com/watch?v=lqw6E9zQitU>

*John Chalmers and Gareth Davies*

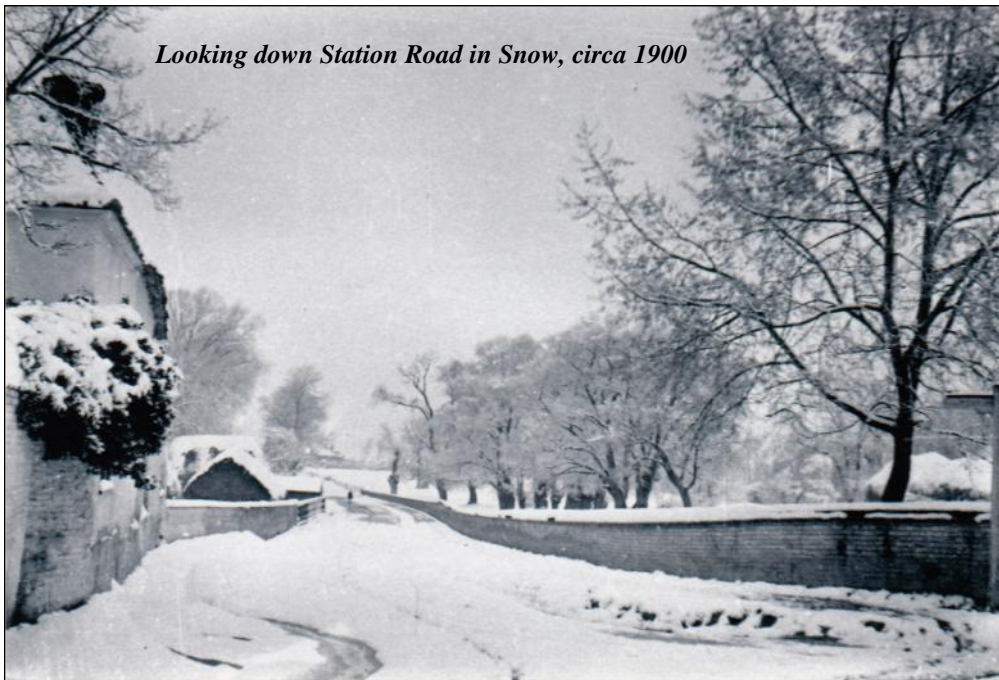


St Cyriac's Tower 2008: The ringers in the picture, from left to right, were Geoff Lewis, Andrew Camps, Reg Webb, Peggy Stanier and Philip Sheldrick (Tower Captain).



# Village Photo Albums Project

*Looking down Station Road in Snow, circa 1900*



## **Swaffham Prior Village Photo Albums**

There are over 200 unique and little-known archive images of our village – engravings, glass plate negatives, slides and photographs –stored for posterity in The Cambridgeshire Collection at Cambridge Central Library and at Cambridgeshire Archives in Ely (opened at the end of 2019). In March this year The Parish Council approved funding for copies of these to be made and the images reproduced in 4 albums which will be available in public locations in the village – An album for the Village Hall, the Red Lion, St Cyriacs Church & Swaffham Prior Primary School.

### **December 2020 - Thomas Cooper, Photographer**

The COVID - 19 pandemic has prevented much progress being made but recently we've been able to begin accessing The Cooper Collection of 100 or so photographs at Cambridge Central Library. Thomas Cooper was born in Swaffham Prior in 1883 and took up photography in the early 1900s. He captured a unique visual record of our village and the people who lived in this community.

This month we're printing two photographs taken in the village over 100 years ago by Thomas Cooper.

One shows the view down Station Road after heavy snow - a view that has not changed much except that behind the brick wall on the right we would now see the school. Before 1929 when the school was built, the land on the corner of Station Rd and High Street was used to store hay - snow-capped haystacks can be seen in what is now the school playground.

The other photograph was taken along Lower End outside Cooper's Shop, now Meadow House, and it was here that dozens of Thomas Cooper's glass plate photograph negatives were discovered in the 1970's. The Coal Merchant's horse is harnessed to the coal cart where young Clifford Benstead holds the reins, keeping himself and the horse very still for the camera. Coal Merchant, Billy Benstead lived in the village and kept a coal store down Lower End near what is now The White House.

***Celia Tyler 01638 744113***

Ref: *Two Churches Together, a History of Swaffham Prior* by Sylvie Short, 2013

[www.fadingimages.uk](http://www.fadingimages.uk) Cambridgeshire Photographers

Cambridgeshire Collection, Local Studies Library - free public access



*Coal Cart outside Cooper's Shop, Lower End, circa 1910*



## **Julie's Christmas Recipes**

### **Grilled Brie and Walnuts**



15g butter at room temperature  
5ml Dijon mustard  
675g wheel of Brie  
25g chopped walnuts  
French bread for dipping

Preheat the grill. In a small bowl, cream together the butter and the Dijon mustard, spread evenly over the surface of the cheese. Transfer the cheese to a flame-proof dish and grill for 3-4 minutes until the top begins to bubble.

Sprinkle the surface with the walnuts and grill for a further 2-3 minutes until the nuts are golden brown. When ready serve with crusty French bread.

### **Layered Salmon Terrine**

200ml milk  
50g butter  
65g plain flour  
450g fresh haddock fillet, boned and skinned  
450g fresh salmon fillet, boned and skinned  
2 eggs, beaten  
60ml double cream  
115g smoked salmon cut into strips  
Salt and freshly ground pepper

1. Heat the milk and butter in a pan until the milk is boiling, put the pan aside and beat in the flour until a thick, smooth paste forms. Season well with salt and pepper. Turn the flour paste out onto a plate and leave to cool.

2. Put the haddock into a food processor and whizz until smooth and do the same with the salmon, keeping them separate. Put into 2 separate bowls.

3. Add an egg and half the cream to each of the mixtures, then beat in half the milk and flour paste to each mixture.

4. Preheat the oven to 180c. Butter 900g loaf tin and line with greaseproof paper. Lay the strips of smoked salmon diagonally over the base and up the sides of the lined tin. Spoon in the first layer of the haddock mix and then repeat with the salmon mix.

5. Cover the tin with a layer of buttered greaseproof paper and a layer of foil. Place the tin into a roasting tin and half fill with hot water. Cook for 40 mins.

6. Remove the terrine from the oven and stand for 10 mins. Turn the terrine out of the loaf tin and serve it warm or cold if preferred.

Both these recipes can be ideal starters or part of a Christmas supper.

*P.S Also have to apologise for missing one of the vital ingredients, the Guinness for the slow cooker beef recipe from last months Crier. Oops.... With best wishes to you all for Christmas and hopefully a much better New year!*

**Julie**

## CAMBRIDGESHIRE Home Energy Support Service

Cambridgeshire ACRE has embarked on a new project, working in partnership with PECT (Peterborough Environment City Trust), an independent charity dedicated to creating more sustainable places. Our new project will deliver the **Cambridgeshire Home Energy Support Service**, over the next two-years. Our aim is to help people on low incomes, who could be struggling with their energy costs. This project will provide advice and support on reducing energy bills and on maintaining a warm home. We will also be able to provide debt relief to those who need it most.

The project will work in the Districts of East Cambridgeshire, Fenland and Huntingdonshire. Currently we are looking for community volunteers from within the parishes in these areas to act as the 'eyes and ears' of the project. The volunteers will simply refer people to us who may need support and we will do the rest.

Volunteers will be required to attend a short (max 1 hour) online training session, so they fully understand their new role. The training will make volunteers aware of the support available to individuals and how they can help. The training will be arranged for a convenient time, for a small group of volunteers and will be delivered by our partners at PECT who are specialists in helping people make their homes more energy efficient and saving them money on their energy bills.

If you have any questions, please let me know and I will then be in touch to discuss further. If you would be interested in registering to volunteer then please get in touch.

**Lisa Chambers, Community Development Officer**  
**Cambridgeshire ACRE, 01353 865048**

---



## Village Gardeners

Because we are absurdly optimistic we are still hoping to start our Garden Club meetings in January 2021! The following programme is in hopeful anticipation of us all meeting up in the renovated Village Hall.

Tuesday 19th January	Paul Stearn	Jesus College Gardens
Tuesday 16th February	Dr Gwenda Kyd	Bach Flower Remedies
Tuesday 16th March	Nigel Start	Getting to Grips with Pruning
Tuesday 20th April	Roy Nunn	Gardens of Madeira
Tuesday 18th May	Evening Visit	Jesus College
Tuesday 15th June	Mike Day	Salads All Year Round
June, date to be confirmed	Summer Outing	Beth Chatto's Garden
Tuesday 20th July	Evening Visit	Prospects Trust, Reach
Tuesday 19th October	AGM	
Tuesday 16th November	Andrew Sankey	Gardens of William Morris

Our meetings in the Village Hall start at 8.00pm.

*Ruth Scovil and Margaret Joyce*

# The Beekeeper of Aleppo

by Christy Lefteri

What an amazing book! This is the story of Nuri, a beekeeper and his wife, Afra, an artist. They live a simple life, rich in family and friends, in the beautiful Syrian city of Aleppo - until the unthinkable happens. When all they care for and know is destroyed by war, they are forced to escape. As Nuri and Afra travel through a broken world, they must confront not only the pain of their own unspeakable loss, but dangers that would overwhelm the bravest of souls.

At first, I was wondering if I really wanted to read what could be a distressing story, but it is beautifully written with simplicity and deep understanding by an author who spent time as a volunteer at a Unicef supported refugee centre in Athens. It brings home the desperate plight, the determination and the agonies of all those fleeing war and hunger.

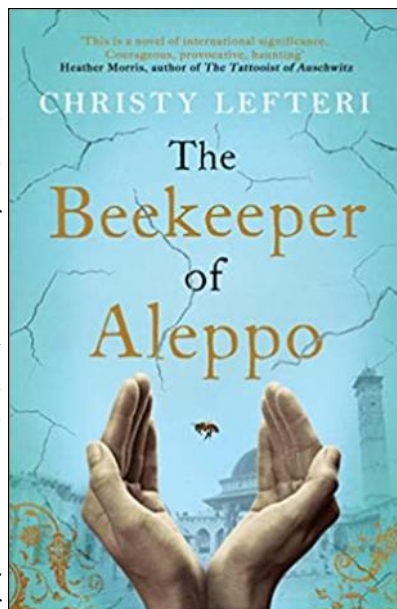
I think we were all in agreement – a must-read book!

Our next read takes us much closer to home – *The Citadel* by A J Cronin – the story of a doctor who starts his career in the 1920s in a Welsh mining town.

If looking for books as gifts for Christmas, we hope our reviews over the last year will have given you some ideas. And of course, you are welcome to join us (meetings as regulations allow). Just contact your friendly editor, Caroline!

With best wishes for a safe Christmas from Book Club

*Roz Chalmers*



## FREECYCLE

Everything is free and nothing is expected in return.

If you have any offers or wants, please contact me by the 14<sup>th</sup> of each month by phone (01223 813362/07980 423210), e-mail ([junthompson44@gmail.com](mailto:junthompson44@gmail.com)) or drop a note through the letter box (23 Longmeadow).

Please let me know if you would like anything repeating in subsequent issues.

### Offers

Wooden croquet set. Pam Day 01223 812050

Table-top dishwasher (little chip on door, but otherwise in good condition). Mrs Webb, 01223 811341





ELC Alphabet foam mats in good condition. Emma/Guy 01223 812793

Two 2.7kg bags of Bakers Meaty Meals adult dog food. Tender chunks rich in chicken. Unopened, best before 09 2021. Christine / Chris 01223 8122568

Free to good home - set of 4 champagne colour large material serviettes; shoe rack. Jackie/Tim 01223 813815

One Single Duvet - 10.5 Togs; One Single Duvet - 15.0 Togs. (Both with washable hollowfibre filling). Lis 01223 811233

### **Wanted**

Largish canvas tarp (or similar) to make a lean-to in the garden and enjoy an alfresco winter. Chris 07480 178089



**Save this Date  
Queens Platinum**

**Jubilee**

**STREET PARTY**

**Sunday June 4 2022**

(all being well — we get a four day bank holiday anyway!)

***Emma Fletcher***

With husband Philip and children Charles and Anne in 1951, the year before she became Queen.



## East Anglian Air Ambulance

On behalf of all who have benefitted from the life-saving help provided by East Anglian Air Ambulance, CEO Patrick Neal, wishes to thank everyone who has helped raise funds and contributed towards the charity. After financial year 2019 –2020, when a surplus over target was committed to reserves, a shortfall of circa £1.7m is predicted for this year due, in large part of course, to Covid restrictions.

Much is being done to further improve the service provided by EAAA, both at Norwich and at Cambridge. Despite a challenging year, plans to start flying our HEMS 24/7 from the new Norwich HQ are on track for 2021. This new building will afford improved facilities for both the crews and maintenance of ‘Anglia 1’ At Cambridge, it is expected that work will start soon on a new dedicated hangar adjacent to the EAAA base. Outside operational hours, ‘Anglia 2’ is currently kept some distance from the base on the airfield. This entails using a powered trolley to move the helicopter to and from each morning and evening – two 15 minute periods of ‘downtime’ when reaction to an emergency is necessarily delayed. The new building will cut out this waste of time and effort and move ‘Anglia 2’ towards 24/7 operations too.

Much is being done to improve the service provided by EAAA – which means that we need to follow each and every opportunity to raise funds. Our supporters are already responding to some new and innovative ways to fundraise. I would ask all to consider joining the EAAA lottery and also think about EAAA when writing or rewriting your wills. Both of these activities are immensely important to the ongoing financial support of the charity.

On a local basis, thanks go to all who, despite but in line with Covid restrictions, so generously supported the Christmas Card days – we raised £465 from sales, a raffle and coffees. Thank you.

PS – if you would like to buy EAAA Christmas Cards next year ( Covid etc permitting ), please let me know.

Michael White







East  
Cambridgeshire  
District Council  
[www.eastcambs.gov.uk](http://www.eastcambs.gov.uk)

From our District Councillors  
Charlotte Cane &  
John Trapp

Licensing Committee considered minor changes to licensing taxis and Covid-19 restrictions. Generally businesses were complying, but some found the rules difficult to understand and our officers are providing advice. Government has given extra funding to help with this.



At the last meeting of the District Council:

- Several questions from the public around Climate Change: divesting from fossil fuels, EV Charging points, energy efficiency of homes
- Petition calling for Mepal Outdoor Centre to remain as an outdoor activities facility
- Agreed a motion to seek rural area designation for affordable housing, and thus lower the threshold at which affordable housing starts
- Agreed a motion to ask officers to discuss options for parking enforcement in the District with the Chief Constable.
- Adopted our Statement of Licensing Policy (which we do every 5 years)
- Agreed our response to the Planning White Paper – one of concern that the policies in the Paper would reduce local participation

Councillors were given a briefing on the outcome of the bus questionnaire, and the bus route that meanders from Burwell to Cambridge was deemed to be the most useful of all the others in the District. There were many responses supporting a more extensive timetable, as well as a Sunday service. Concern was also expressed about the time it took to reach Cambridge in the rush-hours.

Although we don't normally hold a surgery in December, we have decided to hold one this abnormal year using Zoom for which the joining particulars are:

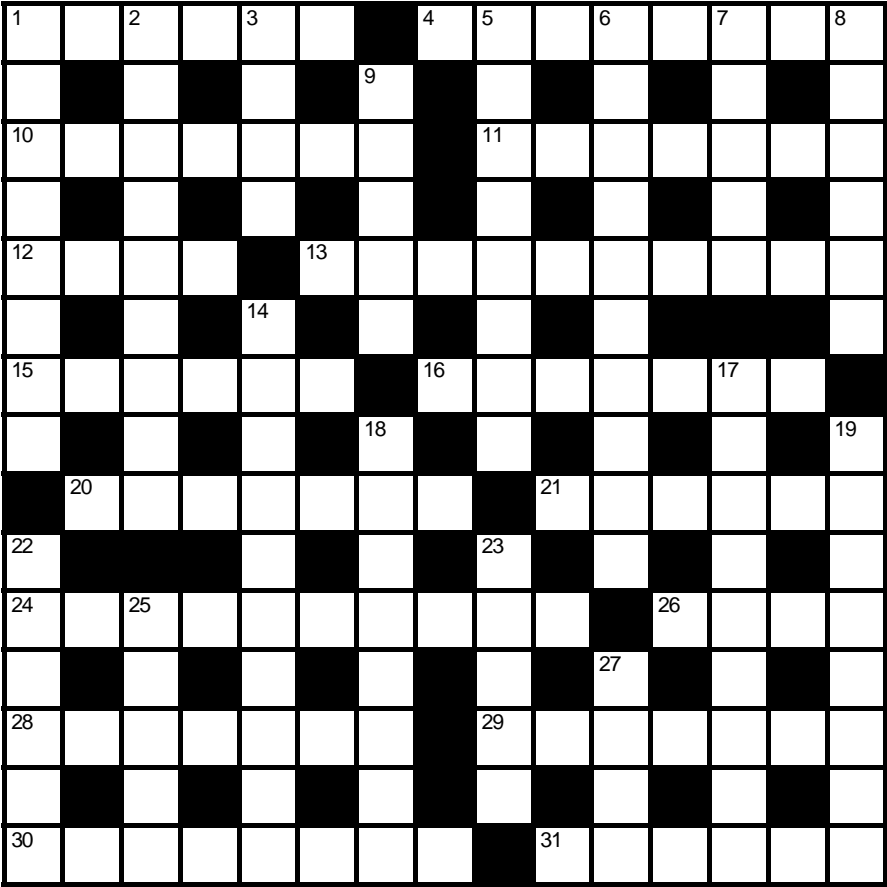
Topic: John Trapp's Zoom Meeting  
Time: Dec 16, 2020 06:00 PM London  
Meeting ID: 357 775 2400  
Passcode: 098359

You can always contact us by telephone: Charlotte Cane 07976 607512, John Trapp on 01223 812120.

# Crossword Number 180

Compiled by **BYWELL**

\* has some bits of seasoning. Send your answers to the editors by 18th December 2020. The first correct solution out of the hat will win a £20 meal voucher for the Red Lion—see the pub manager for full details



Name:.....
Address:.....
.....Tel:.....

## Across

- 1 Points into the supernatural, being properly dressed (6)
- 4 See 9 Down
- 10 Blunder by centre-forward in lagoon put right (3,4)
- 11 Classify mangled torso with a note at the bottom (4,3)
- 12 Cock-a-leekie version contains chicken of a sort (4)
- 13 However you like it, peeled pansy may be no hybrid (2,3,5)
- 15 Not as good as a few slices? (2,4)
- 16 Lute afforded by reverse withdrawals from a non-borrowed hot source (7)
- 20 Do these slide on snow in some backward style? (7)

21/27/17 \* (6,4,9)

- 24 Show proficiency in preparing mango starter with roast beef (2,6,2)

- 26 Cast aspersions with every other SQL query (4)

- 28 Oscar is in a group that looks you in the eye (7)

- 29 One more near hot goulash (7)

- 30 Time to sleep, or run after black whirlwind (5-3)

- 31 I am one excited into a state with no morals (6)

## Down

1/2 \* (4,4,9)

- 3 Desire for love caused by painful sore back (4)

- 5 Stabs in the back holding drink (8)

- 6 Collapse of smooth ribs restricts the flow of blood (10)

- 7 For spreading plant life (5)

- 8 First note within register for musician (6)

9/4 \* (3,2,8)

- 14 See 23

- 17 See 21 Across

- 18 \* (8)

- 19 \* (4,4)

- 22 Assimilate brothers, to a degree, after they turn up (6)

23/14 \* (5,6,4)

- 25 Earthwork in front of my old underground nuclear dugout (5)

- 27 See 21 Across

## Solution to crossword no. 179

	G		F	N			N	A						
N	O	N	Z	E	R	O		B	R	O	A	D	E	N
O		A		R		B		U		C		S		O
C	O	W	E	R		L	I	G	H	T	S	O	U	T
K				I		E		S		U		R		I
E	U	N	U	C	H	S				T	R	O	P	I
D		O				S				R		N		T
	F	R	I	N	G	E	B	E	N	E	F	I	T	
N		T		O		S		U				O		N
O	O	H	I	N	G			N	O	C	A	N	D	O
B		K		M		F		I		U				T
A	T	O	N	E	M	E	N	T		R	A	D	I	I
L		R		T		E		I		A		E		F
L	E	E	W	A	R	D		N	O	T	A	B	L	Y
	A		L					G		E		T		

We congratulate Martyn & Debbie Clark, the winners of last month's competition, who will receive their prize certificate from the editors. Honourable mentions go to Robert Nunn and Trish Whitehead.

# **Notes from the Parish Council meeting**

**held on Thursday 12<sup>th</sup> November 2020.**

Mr John Covill chaired an online meeting through Zoom at which there were present eight Parish Councillors and three members of the public.

## **Public participation for items on the agenda**

Mr Michael Limb expressed interest in and support for the proposed work to the Smock Mill.

Mr Jonathan Cook spoke to raise awareness of the Smock Mill planning application to enable the mill to generate electricity whilst maintaining its traditional appearance. He described the work as ‘of national importance’ as they will be the only two mills working this close together. Mr Cook said that the two mills aim to be working at the same time and open on the same day. The project is a significant investment and will enable students building the new cap to train in mill-wright work. In response to questions, Mr Cook added that it was not yet known how much power the mill would provide as it hadn’t been done before, but the windmill would not be as efficient as modern wind turbines. Mr Cook also confirmed that the airflow for Foster’s mill would not be disturbed as traditionally the two mills had worked simultaneously.

Mr Graham Jackson spoke on his planning application. His previous application had been withdrawn; since then the Planning Officer had visited and variations implemented to produce a new, acceptable plan that Mr Jackson hoped would be successful this time.

## **Reports**

Cllr John Trapp reported for East Cambridgeshire District Council.

At the last District Council meeting, several questions regarding climate change had been raised by members of the public, which Cllr Trapp intends to follow up.

A petition and presentation had been received to argue that the Mepal centre should become an outdoor pursuits centre rather than a crematorium.

A motion regarding parking enforcement is due to be discussed.

ECDC had responded to a proposed Planning White Paper aiming to streamline the planning process; Cllr Trapp considered that the ECDC response did not go far enough and that the focus of the paper was more urban than rural; for example, the requirement for affordable housing did not start until at least 50 houses were being built.

Analysis of the Bus Survey had shown that the Burwell-Cambridge route was significantly the most used and suggestions for later services and Sunday services were being considered.

## **Matters arising from previous minutes**

Cllr Greenfield provided an update for the Local Transport Group (LTG). Most Parish Councils for villages along the B1102 have agreed to support the LTG and

they have a meeting scheduled with the Local Transport Partnership on 23<sup>rd</sup> November 2020. The LTG are setting up a website to aid communication with the general public and are looking into a change to a snappier title. The Chair thanked Mr Cook for his work in setting up LTG.

Cllr Kent-Phillips had reported the drain blocked by pine needles in front of the Village Hall, but Cllr Gynn noted that nothing had been done about the pine needles themselves.

Cllr Kent-Phillips noted that the Heating Scheme's report for the Annual Village Assembly stated that individual Grade II permission was not required, in contrast to the minutes. Cllr Greenfield noted that he believed the minutes were correct at the time, but that further discussion since had changed matters.

### **Correspondence for consideration/circulation:**

CAPALC November bulletin – by email. The playground was discussed in the light of the new lockdown and it was agreed that it will remain open as it is.

Email from Celia Tyler re progress on village photographs project - noted

Letter from ECDC confirming the Red Lion has been granted Asset of Community Value Status – it was noted that this will be due for renewal in three years.

### **Consideration of planning applications received:**

#### **1) 20/01417/LBC The Smock Tower Mill Mill Hill Swaffham Prior Cambridge CB25 0JZ**

Replace existing temporary cap with a working East Cambs cap to match the original. A new curb and running gear will be cast so the cap can turn into the wind. The existing wind shaft will be centre bored for the shaft that controls the sail shutters. A new 8-bladed fantail will be fitted and new sails made with shutters. The cladding on the outside smock will be replaced with new and painted the traditional black. A new brake wheel will be constructed which will drive a shaft to the generator which will produce electricity.

The PC welcomed the project and actively support it.

#### **2) 20/01412/FUL 8 Tothill Road Swaffham Prior Cambridge CB25 0JX**

Alteration and extension of existing bungalow including extension of existing garage to form covered access area - Resubmission

The PC agreed that this planning application is a good idea that would allow a family to remain in the village in suitably adapted accommodation.

### **Accounts for payment**

These were agreed. The PC also agreed that the the precept for Swaffham Prior remain at £14,500.00 for the year 2021-22.

## **To discuss the possible use of ground-penetrating radar to produce a cemetery map**

PL had consulted with several local companies regarding the feasibility of this idea. After discussion it was decided that the survey should cover the central path, the new area/old clunch tip, the undisturbed part of the most recent row and right up to the end fence and that Cllr Latchford can make further enquiries regarding surveying the areas proposed.

It was agreed that the PC would not sell or use grave plots in the older sections of the cemetery even if they were recorded as empty.

## **Clerk's Report**

A roofer had looked at the Pound roof and noticed cracks and loose bricks in the parapet. One quote to fix this had been received and a second was being sought. Reports for the Annual Village Assembly had been requested and those that have arrived are now on the website for people to read. The Clerk to continue to chase others. It was clarified that the AVA online should be mainly for questions people have, the reports beign made available before.

A register of all the grave markings in the cemetery is under construction, as well as a visual check of all grave markers. Whilst checking this, an unsafe headstone was observed (balanced at an angle against a curb with no attachment to the ground) and was laid down by the Clerk. The owner has been contacted and intends to repair it.

## **Open Question Time**

Mr Limb commented on how well the edge of the football field had been tidied up and that the stopping of the Proud of Prior litter picks could be seen in increased litter. It was noted that the AVA report for Proud of Prior said they hope to resume litter picks soon and that the football field lease is being given up and that the field will be used to graze horses instead.

Mr Limb asked who had responsibility for the drainage ditch near the football field which appeared to be filling in? The Chair suggested it was Anglia Water, who may also have responsibility for the bushes currently overgrowing the footpath in the same area; the Clerk to contact Anglia Water to request they clear ditch and cut back overgrowth.

If anyone would like any further information on any of the above items, please consult the minutes or do not hesitate to contact the Clerk.

The next Parish Council meeting will be on Thursday, 10<sup>th</sup> December 2020 starting at 7.30pm via Zoom. All are welcome to attend.



**Jude Griffiths**  
Clerk to the Parish Council. Tel 745 106. Email  
swaffhampriorclerk@gmail.com

I want to say a huge thank you to those who have contacted me this past month expressing appreciation and support after reading my article in last month's village magazine. It has been encouraging and humbling to receive your messages whether communicated by telephone, text, email or in person. I have particularly enjoyed walking and talking with a couple of you reflecting on life and faith, joys and struggles, together.

It strikes me that, ***"We impress people with our strength, but we connect with people in our vulnerability"***.

So often we put on a brave face, wear our mask of, *"I'm fine thanks, how are you!?"* just so we can appear strong. It is great to see someone demonstrating their God-given skill to the best of their ability. I love watching shows like Britain's Got Talent for this very reason ... I find it wonder-full to experience someone achieving their dream, by expressing their strengths.

There is something awe-inspiring and even intimidating about meeting someone who is at the top of their game in a particular field (think multi-millionaire dragons in Dragons Den, or premier league football star, highly successful musician, TV personality or university professor. There is a sense in which however impressive someone's achievements might be, most people who haven't achieved such 'heights' feel they don't have anything in common with them. We find points of connection however, when humility, honesty and vulnerability are expressed in someone, however 'powerful', 'successful' or apparently 'strong' they may be.

When God Almighty came down to earth in the form of a new-born baby, Jesus Christ, as we celebrate at Christmas-time, God made himself vulnerable; he was totally dependent on Mary for his very survival. When Jesus, hung on a cross because of his love for you and me, as we celebrate at Easter-time, his very posture with arms open wide was one of complete vulnerability. Yet, these incredibly vulnerable situations are situations where extreme strength, extreme power and potential are also evident. We can connect with one another in our struggles and pain in life; we can connect with Jesus, because he too knows what it is to struggle humanly, to be tired, bereaved, abandoned, betrayed, hungry and thirsty.

If there is any curiosity in you regarding the person of Jesus, faith in God, purpose in life, hope for the future - then I humbly encourage you to join me in reflecting on these things, with others who are also curious, in our Alpha course starting on January 13th. Join us for the introductory session, no strings attached - see the poster in this magazine for more details.

Christmas Blessings to you and your loved ones,

Rev. Alan.





**ANGLESEY GROUP OF PARISHES**  
**Holy Trinity, Bottisham; St Mary's, Quay; St James',**  
**Lode; St Mary's, Swaffham Bulbeck;**  
**St Mary's, Swaffham Prior**

**Services online and in Churches in December**

Please contact [admin@angleseygroupparishes.co.uk](mailto:admin@angleseygroupparishes.co.uk) to request Zoom link for online services

PLEASE WEAR A MASK FOR SERVICES IN CHURCH

**Thursday 3 December**

10.30am                      Holy Communion                      Lode

**Sunday 6 December**

9am                              Holy Communion                      Quay

10.20am                      Zoom service

**Thursday 10 December**

10.30am                      Holy Communion                      Lode

**Sunday 13 December**

9am                              Book of Common Prayer Communion                      Swaffham Prior

10.20am                      Zoom service

**Last week of term and Christmas Week**

**Nativity Trail**              in Swaffham Bulbeck and Swaffham Prior: find the festive symbols to see work from local primary schools; needs mobile phone with QR reader

**Thursday 17 December**

10.30am                      Holy Communion                      Lode

**Sunday 20 December**

9am                              Holy Communion                      TBC

10.20am                      Zoom service

6pm                              **Carol Service**, on Zoom - please join in and sing carols at home

**Wednesday 23 December**

4pm                              **Christingle**, on Zoom - collect components from your local church porch, make a donation to the Children's Society and assemble your Christingle as part of the online service

**Thursday 24 December – Christmas Eve**

10.30am                      Holy Communion                      Lode

8pm                              **Worship for Christmas**, Zoom service

11.15pm                      **First Communion of Christmas**                      Swaffham Bulbeck\*

**Friday 25 December – Christmas Day**

8am                              **Book of Common Prayer Communion**                      Quay\*



10am

**Family Communion**  
Swaffham Prior\*

**Sunday 27 December**

10.20am

Zoom Service

---

## Christmas Events and Services online and in Churches

### Last week of term and Christmas Week

#### Nativity Trail

in Swaffham Bulbeck and Swaffham Prior: find the festive symbols to see work from local primary schools; needs mobile phone with QR reader

### Sunday 20 December

6pm

**Carol Service**, on Zoom - please join in and sing carols at home

### Wednesday 23 December

4pm

**Christingle**, on Zoom - collect components from your local church porch, make a donation to the Children's Society and assemble your Christingle as part of the online service

### Thursday 24 December – Christmas Eve

8pm

**Worship for Christmas**, Zoom service

11.15pm

**First Communion of Christmas**  
beck\*

Swaffham Bul-

### Friday 25 December – Christmas Day

8am

**Book of Common Prayer Communion**

Quy\*

10am

**Family Communion**

Swaffham Prior\*

\* Important note - for services in church on Christmas Eve and Christmas Day, please sign up so we can manage numbers and comply with restrictions. Please express an interest at [admin@angleseygroupparishes.co.uk](mailto:admin@angleseygroupparishes.co.uk)



## Dates for Your Diary December 2020

Tue	1	
Wed	2	Book Club [20]
Thu	3	Heating Swaffham Prior design surveys, until 8 Dec [6] ...
Tue	8	Heating Swaffham Prior design surveys, last day [6]
Thu	10	PC Meeting, 7:30pm, Zoom [29]
Fri	18	12 noon, Traffic Consultation Ends [9]
Thu	24	CHRISTMAS EVE
Fri	25	CHRISTMAS DAY 10am Family Communion. St Mary's [31]
Sat	26	BOXING DAY
Tue	29	<b>Crier Copy Deadline</b>
Thu	31	NEW YEAR'S EVE

*Numbers in square brackets indicate page number of an accompanying article*

Club	Contact	Tel.	Date	Time	Place
FOSPS			2 <sup>nd</sup> Mon of Term	8pm	Village School
Beavers, Cubs and Scouts	Tim Doe	01223 861083	Variable		
Reading Group	Brenda Wilson	743937	1 <sup>st</sup> Weds of month	8:00pm	Kent House
Village Gardeners	Margaret Joyce	744390	3 <sup>rd</sup> Tues of month	8:00pm	Village Hall
WI	Pat Cook	742224	3 <sup>rd</sup> Mon of month	7.30 pm	Village Hall