



The Swaffham Crier

Volume XLI Number 12
December 2017



Editorial

When I was a child, I used to love going Carol Singing. Furry Boots, Mulled Wine, Mince Pies and very occasionally even Snow. Well, we can all look forward to that again, because this Christmas, we are all invited to step out and Carole round the village, (see page 8), or alternatively just go straight for the Mulled Wine afterwards at the Village Hall. Excellent!

Many apologies last month for a gremlin that snuck into the Crier as it went to print and messed up Merlyl Moore's WWI not to mention Minion the "gas masked" scarecrow. (there he is below). We've reprinted this month, and readers be aware, Meryl has written a truly excellent book and well worth seeking out.

Congratulations Burwell's RADE (Residents against Dirty Energy) who have seen off the would-be mega power-station builders just the other side of our Dyke. Apparently this application was immediately replaced by yet another, a "Power Storage Facility" apparently, from, yes, another "Green" Company, not Solar this time, but *Aura* Power. Perhaps they're planning a .holistic reservoir.

There are some gems in this month's Crier, including Jorge Monteiro's Partridges, Margaret Joyce's fascinating account of Tudor Gardens and a really lovely article about a very ugly bantom hen by our curate, Gina Radford. And there must be some teenage horse-fans in Swaffham Prior, surely? Judi Churcher is looking for such to help with her horses, don't miss her ad on page 10.

Because the Christmas Break falls awkwardly for Crier



Minion

printing, we're postponing printing until the beginning of Jan, so nice long copy date (28th) and plenty of time for Christmas Crossword.

Have a very Merry Christmas everyone, and we hope that like us you will NOT be indulging in Alcohol Abuse: "Brandy! You are completely useless and as for You, Prosecco...". Be polite. See you at the Carols, Candlelit and Streetlit

Caroline Matheson

Regulars

Letters	2
Our Reporter	4
Julie's Recipes	9
Ophir	11
On the Wild Side	12
CROSSWORD	14
Village Gardeners	16
Let's Dance	17
Mothers' Union	17
Bon Mot	17
Photographic Club	18
Cllr Alderson	19
Botanic Gardens	20
Bottisham Surgery	21
PC Notes	22
Re:new	28
Freecycle	29
Church Services	21

News, Views & Reviews

Merry Christmas!	3
Meryl Moore's WWI	7
Gina Radford	30

What's On

Carol & Crib Service	3
Annual Coffee Morning	6
Village Carols	8
St Mary's Events 2018	10
Boxing Day Hockey	11
The Matchmaker	13

Wanted

HORSE HELP!	10
-------------	----

Cover Picture: *Dreaming of Thee* by Sarah Burgess



Letters to the Editors



Dear Editors,

Those Scarecrows

Thank you for all the village support for the scarecrow display. The idea began when the school garden club were so keen to put a scarecrow together in the our vegetable plot a year ago. Then things sort of mushroomed! Thanks especially to the church and church helpers for the clear out day- stuffing scarecrows in my car- (photos included). All the scarecrows found their way back home- except two who finally left the comfy turquoise chairs in front of the "Red Lion" and are now displayed somewhere remote in the fens!! The snakes went up in smoke on the Swaffham Bulbeck bonfire -joining their firework display. However quite a few scarecrows are enjoying a second life- being recycled .



Putting the Scarecrows away again

The snakes went up in smoke on the Swaffham Bulbeck bonfire -joining their firework display. However quite a few scarecrows are enjoying a second life- being recycled .

Last week Sue Giles and I enjoyed giving the winners their prizes at school assembly.

Many thanks from our school garden club and Sue Wade.

Sue Wade

Dear Editors,

QUIZ NIGHT

Well, another quiz over and thank you to all who came and made it an enjoyable night. Team 'Where's Janet' were the winners, congratulations. Brenda Wilson stepped into the position of quiz mistress, so thank you Brenda, you did an amazing job. Also thank you to your grandchildren for helping to collect the answers. April came up trumps again by organising the raffle and thanks to the people who donated prizes. A big thank to Betty, Sheila, Jo and Linda who served the food and helped in the kitchen which is always appreciated.

We raised £280 for St. Mary's Church, thank you. The next quiz is the 17th March 2018 so please put it in your diaries and we will hope to see you there. I know it's early to say it but here goes, we wish everybody a Merry Christmas and Happy New Year.

Lynne and Jenny

St Mary's Church, Swaffham Prior welcomes you to our Christmas Services

**Village Carol Service - Sunday 17 December,
4.30pm**



A Service of Lessons and Carols with readers from throughout the village and featuring school and church choirs.

Crib Service – Christmas Eve, 3pm

A short, simple celebration of Christmas around the Crib.
For all the Family.



Merry Christmas!

“People have been asked not to give alcoholic gifts to their older relatives this Christmas so that they may live longer.”





From our Reporter at the Parish Council Meeting

Surprisingly, very few poppies were being sported at the November PC meeting. But, I then remembered that the young understandably do not always respect old traditions. Paul the Clerk was away in Wisconsin and it seems his stay has been extended so he will also miss the next meeting. Maybe he is waiting for Donald's return. Steve took his place and a very fine job he did. But, Paul's presence was very much missed as shall be revealed.



Before the meeting began Emma Fletcher and Mike Barker gave an update on the Swaffham Prior Community Energy Survey. The consultants will have completed the draft report by the end of the month. This will give time to apply for further central government funding of £100,000 that is available until the end of the year. This would allow a further survey involving engineering work. So far they have had 85 survey forms returned, which is considered a good response. ECDC are interested in giving its support, especially with new developments being built, and the lack of interest in other villages. Emma, very humbly, and in a very quiet voice, asked whether the PC would give its support and even contribute a few pounds, say, just two hundred. It reminded me of Oliver Twist asking for more. The PC went absolutely silent; they did not give any answer. Like Oliver, Emma and Mike went off empty handed, but unlike Oliver they were thanked for coming. I wouldn't have liked at the beginning of the 19th century to be selling the idea of a steam engine to the PC.

Steve read out a lengthy report from Allen Alderson which I hope is reproduced at the end of this *Crier*. There was nothing from Joshua Schumann, our new CCC representative. When Paul the Clerk comes back they thought he should write and ask for a Quarterly Report. The PC are being remarkably tolerant. We as individuals pay a lot of money to the CCC and it cannot be bothered to keep us informed. Does Joshua neglect other villages especially his home base Soham in the same way? We were spoilt by the attention of David Brown, but this may have gone to the other extreme.

Then there was quite a comedy show. Mike asked if the letters asking for payment for cemetery use had been sent out to remind three late payers. It seems the letter may have been drafted but not sent. Can they be sent? Yes, but who are AK, AD and DB as recorded in the minutes? Everyone knows AK as he is quite famous. Then began the comedy – “Why don't you know who AD and DB are?”, “It's your job to know”, “We can't just send a letter

to AD and DB". Mike appeared very frustrated by all this, while we in the public gallery were falling about as this discussion went on for a very very long time.



And AD and DB remain mystery figures. Come back Paul.

A couple of planning applications were then considered and both were approved. In order to reach one of the applications Sandra had to stretch right across David and my heart almost stopped as her hand looked as it was going to brush against his chest. How life has changed over the last few months. Six months ago this would never have crossed my mind and I would just have thought "C'mon David, pass it to her", whereas I now thought "Don't do it Sandra, you might get into trouble."

The Notice for the refurbished Pound is now up but it did not lend itself to a bit of gilding. Everyone is encouraged to view it. The Open Spaces money has all been spent with only 29 pence remaining. The CIL money still has £4214 available which needs to be spent by April 2018. So new project suggestions are welcome. Paul L thought "everyone in the village will be entirely satisfied" but many were not so sure, and with a guffaw, asked "Do you really think so".

David has been doing some sterling work with all the planning proposals now with ECDC, and he will be sending in some additional comments regarding the site at the rear of 73 High Street, known as the Horses Field, or the Paddock. He will also try to emphasise the low cost housing obligations. He pointed out that some developers have some simple ruses to escape their liabilities, which is one reason why there has been such a shortfall of low cost housing in the country.

The Exclusive Right of Burial for Jeannie Jay was approved. But, with Paul the Clerk being away, quite a tale developed around this. There was a short notice request from Southgate to know where to dig a new grave. The enquiry went to John who told them to put it at the end of a row. There wasn't one at the end of a row so it was dug in the middle of a row, in a plot reserved by Sandra's family. The gravedigger was at the bottom of the grave when he was told he had dug it in the wrong place, would need to fill it in, and dig it elsewhere. There was probably quite an earthy response. Everyone was understandably very upset especially as the filled in grave had been left in a totally unacceptable condition. It was agreed to ask Southgate, very nicely, to tidy it up. The PC assured Sandra that, one way or another, it will be tidied up as best as possible. Sandra reminded the meeting that it is easy to check the availability of graves by going on line and consulting the excellent record created by Andrew Noyes.

John gave the latest news on the Youth Club hut. Martin Mead had advised against demolishing it without rebuilding plans because of the trouble and



cost of removing asbestos and making safe the electricity and sewerage supplies. Meantime Andrew Noyes had also looked at the building, and concluded that it still has twenty to thirty years left in it (roof rafters still to be checked).

Of course at the end of that short period of time the question of a new building would arise again.

The meeting ended with the news that the Village Hall will be erecting a two foot high, rounded top, picket fence to protect the new plants from footballs and similar. Then Peter Rand said a lady had approached him, who, having established he was going to the meeting, asked him to report that the light at the end of Adams Road had been out for weeks. "Not ours" said the PC, and asked Peter to tell the lady that there is a phone number on the lamppost to ring. Peter said this might be difficult, as he didn't know her. The obvious answer is that he loiters at the end of Adams Road until he recognises her.

Alastair Everitt

ANNUAL COFFEE MORNING

10.30 – 12.00 Noon



**Friday
19th January
2018**



4 Fosters Lane, off Rogers Road

**Cake Stall & Raffle
Produce Stall**

All proceeds to St. Mary's Church

Meryl Moore

And

The First World War



This is quite a saga. Meryl Moore came to Swaffham Prior in about 1991 and lived in Rose Cottage in Cage Hill until 2006 when she moved to a bungalow in Burwell. She is the most lovely lady, was very active in the village, and wrote elegantly as a *Crier* reporter. She was also notable for always leaving events to work on her father's First World War diary and correspondence. To be honest many of us thought she would never complete the work as she had been working on it long before she came to Swaffham Prior.

Earlier this year I was amazed when someone showed me a copy. It is an excellent book and I cannot recommend it more highly. But, because there is insufficient space in the *Crier* for a full description, if anyone, especially those who knew Meryl, would like to receive a longer notice about the book I will happily send this to you.

The title is *I embarked for France. The War Diaries and Letters of an English Family in the Great War*, Edited by Meryl Moore. And the "Family" reference is the very special aspect of this book. It begins with Meryl's grandmother Ada's diary, on 28th July 1914. This relates how she and her son Evelyn (Meryl's father) aged almost 16, set sail from St Katherine's Dock for Bruges to meet up with daughter Enid. They were all on their way to their usual summer resort at Petit-Fort-Philippe, not too far from Dunkirk. It was on this very day, 28th July, that Austro-Hungary declared war on Serbia, followed by Germany declaring war on France on 3rd August and invading the neutral Belgium, which led to the United Kingdom declaring war on Germany on 4th August.

This is not just a tale of one soldier's war time experiences but also a broader account of civilian reaction both here and abroad etc etc. And the whole family were in the thick of it right from the beginning.

Alastair Everitt



Get in the Christmas spirit with the

Village Carols

Wednesday 13 December

Swaffham Prior Village Hall

Carol singers depart from Hall at 6.30pm, heading around the village and returning to Hall at around 7.30pm

All welcome to join in the singing around the village, or just to meet up back at the Hall for some more music, mulled wine and mince pies



Singing ability not required – just bring your enthusiasm!

Everyone welcome



JULIE NUNN'S CHRISTMAS RECIPES



BOOZY MINCEMEAT



500gr currants
500gr raisins
500gr sultanas
500gr finely chopped Bramley apples
2x250gr shredded suet
100gr chopped almonds
350gr demerara sugar
100gr dark brown sugar
1 tsp ground cinnamon
2 tsp ground mixed spice
1 large lemon, juiced and zested
250gr of chopped mixed peel
125ml dark rum
125ml Disaronno or amaretto
175ml French brandy

Mix all the dried ingredients together first, nearly everything, then add lemon zest, juice and the booze. Mix it all very thoroughly and leave covered for 24 hours giving it a stir now and again.

Pack the mincemeat into sterilised clean jars and seal tightly.

This recipe makes 3.5kg of mincemeat. I usually leave it a couple of weeks so the flavours enhance before I make my mince pies.

CHRISTMAS ROCKY ROAD

250gr dark chocolate
150gr milk chocolate
175gr soft butter
4x 15ml golden syrup
200gr amaretti crunchy biscuits or rich tea biscuits if preferred
150gr chopped Brazil nuts, quite small
150gr glace cherries
125gr mini marshmallows
Icing sugar to dust over.



1. Melt chocolates, butter and golden syrup together.
2. Bash biscuits into smallish bits.
3. Then add biscuits, nuts, cherries and mini marshmallows to melted chocolate mixture.
4. Tip into a lined tin or foil tray
5. Refrigerate for 2 hours until firm enough to cut into square and then dust with icing sugar.

Wishing you all a very happy christmas!
EAT, DRINK & BE MERRY



St Mary's Events for 2018

January 19th	Annual Coffee Morning , 4,Fosters Close ,(off Rogers Road) from 10.30a.m-12 noon
February	3 frugal lunches to be confirmed.
March 17th	Quiz Night .
April 21st	Film with fish and chip supper .
May 19 th	Moveable Feast .
June 16th	Beetle drive with tea and cakes.
July 15th	Strawberry Teas .
September	Dog Show ,to be confirmed with Autumn Show .
October 6th	Quiz Night .
October 13th	Harvest supper .
December 2nd	Advent by Candlelight .

Horse Help Wanted in Swaffham Prior



Reliable and trustworthy help
needed to look after our horses
in Lower End
Flexible working with a maximum of
7 hours a week
Would suit a teenager with some
experience of horses.
Apply to Judi Churcher 07763
769933



Boxing Day Hockey Match

SWAFFHAM PRIOR VS SWAFFHAM BULBECK

The Denny, Swaffham Bulbeck

TUESDAY 10.45 am (10.30 am players)

COME AND SUPPORT SWAFFHAM PRIOR!!

All proceeds to MAGPAS



Contact **Mandy Kingsmill** if you would like to play in the winning team!

New players are always welcome

01638 742482 (kingsmills@btconnect.com)

English, as it's spoken

Adjectives are very cheap,

We use them all the time.

Not singly though, which would suffice,

But mostly; you must believe it; twice !!

Or even - and I've heard it; thrice !!!

For instance - ' *huge great gigantic tree* ';

Or, ' *steaming, warm, hot cup of tea* '.

And too many more to mention here

From my ' *long big boring extensive list* ', I fear. !!!!

The practice, these days, is all too frequent

I hear it more times than is decent.

Ophir



On the Wild side The Partridge, the Pear and the Tree



Welcome to the December issue of our On the Wild Side. As we enter the season of joviality and much festive hilarity, it's time to turn our attention to the Partridge, specifically the 'Red Legged' one. The first thing to say is from living in our village for 15 years and having a pear tree in the garden, I have yet to see a wandering partridge climb, run (or more likely fly) into our single pear tree in the month of December. However, they are likely to be seen out in our county fields, being bare for the winter season.

"Red Legged" partridges are more colourful than their Grey partridge cousins, with their brighter patterning, as shown in the image. They are quite gorgeous birds up close and very friendly, but also timid. They have a number of predators in the wild, namely birds of prey and foxes. And as a favourite game bird of us, are also on our Christmas menu too- hence the reason for their shyness with people. They are of a rotund shape and according to the 'RSPB Birdwatchers Pocket Guide', can be seen on roofs and fences, so be on the look out this next month or two!

So what do red legged partridges like to do? Well, they prefer to run than fly and if you're walking by, they will run out of your way first, before flight becomes a necessity. Their U.K. habitat covers roughly the whole Eastern seaboard from Scotland to the Isle of Sheppey and across to Devon and Wales as well. However, they are not originally native to Britain but were introduced into East Anglia from France in 1770. Despite doing remarkably well as a species, there are around 82,000 breeding pairs in Britain alone; their numbers are declining on the continent. Therefore, they are an important part of not just the U.K but European ecosystem and need effective conservation management.

Of course, Christmas isn't Christmas without a Partridge being in a Pear tree, but where to look for such an occurrence. To understand the story behind this amazingly memorable carol, looking into the history behind the Twelve Days of Christmas is a good place to start. Originally it began as a song imported from France in the 18th century, but was adapted as published in 1780 without any accompanying music. The modern version hails from a 1909 'version', of the traditional folk melody by English composer Frederic Austin, who introduced those famous gold rings! The Partridge in the Pear Tree comes first- being the most important as a gift from one lover to another, which may symbolise the giving and sustaining of 'mirth without mischief'- in keeping with the nature of Christmas as a festival of shared giving and kindness.

So this festive period why not consider heading out into our countryside to see if you can spy a Red legged Partridge. Celebrate your Christmas or New Year's day by going for a walk out to find the Partridge family on their way. Merry Christmas to all and a Happy New Year, Hooray!!!

Jorge Monteiro



St. Mary's Players - Swaffham Bulbeck

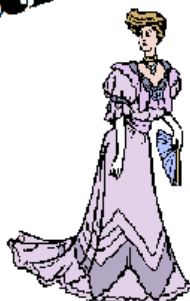
present an

Evening at the Theatre

**A comedy by
Thornton Wilder**



The Matchmaker



Thu.15th. Fri.16th. February - £10

Sat. 17th. February - £12

7.30 in the School Hall

(all prices include glass of wine)

Tickets from: Geoffrey Datson 55 High Street

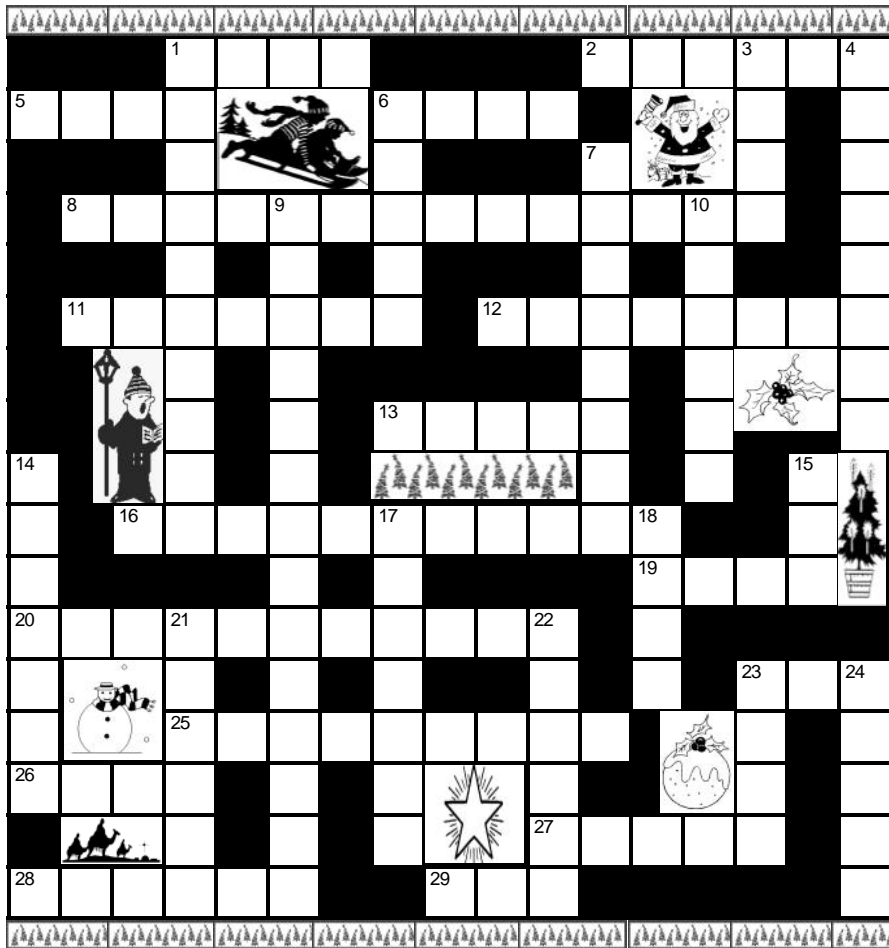
Tel: 812395 or email: datson@btconnect.com

Crossword Number 148



Compiled by **NIBOR**

This month's puzzle is a simple cryptic crossword with a seasonal flavour. Send your answers to the editors by 28 December 2017. The first correct solution out of the hat will win a £20 meal voucher for the Red Lion—see the pub manager for full details.



Name:.....

Address:.....

.....Tel:.....

Across

- 1 Tot may be found in 26a (4)
- 2 Bury cow's tail first when it's cold (6)
- 5 Rodent's back; it was seen over 25a (4)
- 6 Could be a king, or a joker (4)
- 8 Carol reported monstrosity; maybe 6a vessels (1,3,5,5)
- 11 Moan about a ship then make merry (7)
- 12 Arrange duel, yet I find the festive season (8)
- 13 Conifer found in Alsace dark forest (5)
- 16 Ornaments might be 20a (11)
- 19 Master, behold, never-ending old pennies! (4)
- 20 Filthy rag is destroyed to make tree 16a (5,6)
- 23 Head of police that is attached to tart (3)
- 25 Liz goes to the French border and a town on the Jordan river (9)
- 26 Bed made of cold bone (4)
- 27 Rotas changed to make Christmas dinner (5)
- 28 The French to give 4d (6)
- 29 Holly goes with the climber (3)

Down

- 1 Bear caused upset accompanying 27a turkey (5,5)
- 3 7d love Oyster stew without hesitation (4)
- 4 "28a is one", as Prince Phillip said to his wife, we hear (8)
- 6 Can a robin on land start to sing? (5)
- 7 Rich lend variety to youngsters (8)

- 9 Much obliged to a character it is noted (5,3,6)
- 10 Maybe 27a may spot a tomato inside (6)
- 14 Vehicles used to transport art notes are very cold it's reported (7)
- 15 Cherry sees 4d extremity (3)
- 17 I glance cunningly but look divine (7)
- 18 Sleigh Santa initially guided (4)
- 21 Robin flies around key to get hairband (6)
- 22 Make a mistake in modest aperitif (6)
- 23 Get festive drink in Dover perhaps (4)
- 24 Fairies found in steel vessels (5)



Solution to crossword no. 147

	E	O		E	S		S	
D	O	V	E	R	C	R	O	M
O	E	D	C		L	N	B	F
G	E	N	T	E	E	L	E	L
G	S	R	E			L	D	R
E	G	O	I	S	T	S		F
R		N			C		O	N
		G	E	R	M	A	N	B
M			O	K		W		O
A	U	T	O	C	U	E	A	F
L		O	K			T	L	S
I	N	T	R	A	Y	S	C	A
N		S	L	P		H		M
	B	U	L	L	S	E	Y	E
	P				D	S	Y	G

We congratulate Shirley Wilkins, the winner of last month's competition, who will receive her prize certificate from the editors. Honourable mentions go to Robert Nunn and Trish Whitehead



VILLAGE GARDENERS

Our fascinating talk, was given by Pippa Temple, with learned additions and interjections by her husband Steve, on The Passions revealed in Elizabethan-gardens, belonging to three of her most important courtiers- William Cecil and Robert Dudley, both ardent Protestants and Thomas Tresham, an ardent Catholic.

Elizabethan England, was violent; full of power, faith and political struggles, tensions and threats from Spain.

Gardening and gardens were a huge antidote to this and at a time when plants and flowers were being imported from the East and design, largely from Italy, it was an opportunity for the wealthy to impress.

Elizabeth I spent a lot of her childhood at Hatfield House, where there was a beautiful garden. She consequently loved gardens - a fact known to all her courtiers, who as a duty, designed gardens, which they hoped would impress her when she visited.

The first was Thomas Cecil, Lord Burghley and incidentally, the first minister for East Anglia, who commissioned a grand new house set in 18 acres of garden. It became Theobalds and the gardens were a magnificent renaissance park. It was at Cheshunt, in Hertfordshire, about a day's travel from London and developed by Cecil, with her and her travels around the country in mind. He felt very deeply about the Queen. She stayed there dozens of times, but the house was eventually swapped, at the request of the then monarch, James 1st, for Hatfield House, where Robert Cecil lived. Theobalds was finally demolished in the civil war.

Robert Dudley, Earl of Leicester, first met Elizabeth as a fellow prisoner in the Tower. He adored her and she gave him Kenilworth Castle in 1575. He spent millions on this property and the surrounding land—flooding marshy land, so that sea battles could be re-enacted. Amongst all this splendour, was an amazing aviary, full of impressive birds and an harbour, where he had hoped to propose to her. Sadly, all good things come to an end- they rowed (had she discovered he was already married), she left, and he let the garden go to rack and ruin.

Thomas Tresham, inherited Lyvedon new Bield, when he was 15-already very wealthy and stayed there for most of his life. He had a large family and developed very complex gardens- orchards, banks, a mizmaze (turf) and a huge, unfinished banqueting lodge, which still stands. Because of his catholic faith, he was imprisoned and never recovered his fortune. He died, £11,000 in debt.

All the gardens, in their different ways, exhibit the extraordinary symbolism of the Elizabethan age- plants, planting, terracing, design and layout of hedges, paths, water and stone works, all so very important.

The next meeting of the Gardeners is on 16th of January, when Richard Ayers MBE, will be talking about the gardens at Kirtling Towers.

All visitors are welcome

We are also happily visiting, the gardens of Pippa and Steve in July.

Margaret Joyce



LET'S DANCE

Come and join us dancing on Saturday evenings in the Main Hall at Bottisham Village College.



We will have music for Ballroom, Latin American and popular Sequence dancing.

Dates: January 13th, February 10th (Black Tie optional), March 10th, April 21st and May 12th (Floral May Ball)

Time: 7.30pm to 10.30pm.

The cost is £12 per couple, which includes interval tea/coffee. You are welcome to bring along your own refreshments. There is ample parking on site.

For further information please contact: Frank and Sue Hancocks, 01638 741159 or check out our website: www.letsdanceclub.org.uk

*Let's Dance Club is a "not for profit" organisation established to provide dances for the community.



Mothers' Union

At our October Meeting we held our "Autumn" Bring and Buy Stall which made £40. Members were asked to bring along a treasured possession and share its special meaning with other members. A wide variety of objects were brought along from a brooch/Brownie badge and bicycle; these brought back a lot of memories to us all as well as being a much cherished possession to their owners.

On December 14th we are having our Christmas Lunch at Scotsdales in Horningsea (time to be confirmed); the summer tea-party was such a success, we decided to return there.

Our meetings usually take place on the third Thursday of each month in Lode Chapel at 2.30. We welcome new members and if anyone would just like to come along to a meeting to find out more about us please do so. We would like to wish everyone a very Happy Christmas and New Year.

Jill Jenyns.

BON MOT NUMBER EIGHTY TWO

**"Good breeding consists in concealing
how much we think of ourselves
and how little we think of the other person."**

Mark Twain (1835 - 1910)



Bottisham & Burwell Photographic Club

The club started its 44th year in early September and has again been able to attract several new members to our relatively small club. We are always pleased to see new members wishing to join or as guests throughout the year. The club now has about 40 members, which includes some very experienced photographers who are able to share their depth of knowledge of photography with new members.

On 24 October 2017 the club had its first Print League Competition of the season. There are three of these competitions throughout the year and in this first event there were 87 mixed entries of colour and monochrome, in our open subject category. The club is very pleased to see a continued large number of entries. These competitions are always marked and critiqued by an external judge from a photographic club of the East Anglian region.

On Tuesday 6 December 2017 we have Ian Wilson APRS from Cambridge Camera Club, who will be giving a digital presentation entitled '**Just When you Thought It was Safe.....!**' You remember 'Jaws 2'? - this is the follow-up to Ian's Icelandic presentation last year.

Other dates for your diary in 2018:

Tuesday 9 January

'**Telling the Story**' Audio visual presentation evening, by Diana Burns FRPS AV-AFIAP & Mike Burns ARPS from Wisbech Camera Club.

Tuesday 30 January

Members' Mini's: 'An Evening with Gerry Metcalfe' Our Chairman will talk about the trials and tribulations of being a photographic judge.

Readers may remember that the club's Honorary Secretary, Daphne Hanson DPAGB APAGB, was appointed President of the EAF - East Anglia Federation of Photographic Societies in February 2016. Daphne's term as President of the EAF will now be drawing to a close and will end in February 2018.

Although in its early stage of planning, the Club will hopefully have a photographic exhibition sometime during 2018, further details will follow early next year.

Guests are welcome to attend any meeting at our venue, Lode Chapel CB25 9EW on Tuesday's from 7:30 pm to 9:30pm. Fee: £3.00, including refreshments, refunded on joining.

Annual subscriptions: Adult: £40.00, Joint Membership: £67.00, Student: £21.00. Refreshments 50p. New members joining now will receive a pro rata rate.

Lastly we would respectfully ask guests attending the club not to **double park** in the vicinity of Lode Chapel, as there is local concern regarding access for emergency vehicles.

Barry Coles

For further details contact:

Mrs Daphne Hanson DPAGB APAGB

T: 01638 741106

www.bottburpc.org



November 2017

On 5th October full council ratified our new local plan. It is now out for public consultation, then it goes to the government inspector for consideration. If all goes to plan it will be in force by next summer.

The good news is that the stop lines around our towns and villages are now back in force. This should stop any new inappropriate planning applications.

On Saturday 28th October a group of us District Councillors met with James Palmer, the mayor of our combined authority.

He discussed several issues. Improvements to the A10, Soham Station, Ely North rail junction. He also said that the Government wants to see 100,000 more houses built in Cambridgeshire. I said that it cannot be done without the appropriate infrastructure.

- 1) Major improvements in our road system, including the smaller roads
- 2) More schools, particularly primary schools
- 3) More doctor's surgeries
- 4) More leisure facilities and open spaces
- 5) Improvements in bus routes, particularly for the elderly.

The Governments wants to particularly help younger prospective home buyers.

I said

that finding cheap land and building the houses was only part of the problem.

Housing has changed over the last 45 years. Back then the average house cost 3 ½ times the average wage, now it is nearer to 10 times the average wage.

Also, the private rental housing market is not helped by the large number of people moving into this market and thereby pushing up rental costs.

James said that we have got to find ways of building houses cheaper and thus making them more affordable. Next year, the councils contract with Veolia expires. We shall be taking it inhouse and running it ourselves.

The street cleaning will improve as we will have improved machines.

Also, if anybody wants a second blue bin, they will be able to purchase one from the council for £25. It will be collected at the same time as the existing blue bin.

Allen Alderson





CAMBRIDGE UNIVERSITY BOTANIC GARDENS



Fancy a kiss...?

Viscum album, or mistletoe, really comes to the forefront of our minds when it is brought into our homes for the Christmas tradition of kissing beneath the mistletoe. There is far more thought to this curious plant than this much-heralded tradition.

A native of the British Isles, mistletoe occurs in southern England, Wales and the Borders. *Viscum album* is prevalent in areas with a mild climate and suitable woody hosts, and it is particularly associated with the orchard-growing counties of Herefordshire, Worcestershire and Gloucestershire. Mistletoe is a hemi-parasitic species meaning that it carries out photosynthesis but also obtains nutrients and water from its host. Frequent hosts include apple, hawthorn, lime, and poplar. It will grow on more unusual hosts such as witch hazel (*Hamamelis* spp.) and handkerchief tree (*Davidia involucrata*), as at Cambridge University Botanic Garden. *Viscum album* is a dioecious species, having separate berryless male and fruiting female plants, and requires both male and female plants to produce fruits. It is spread from tree to tree by birds (and especially mistle thrushes). Perceived wisdom suggested that the seed needed to be passed through birds and deposited in bark fissures. It is this aspect of the plant which led to its common name of mistletoe. *Mistel* derives from an Old German word *mist*, meaning dung, and *toe* from the Old English word *tan*, meaning twig. It is now accepted that neither of these is necessary, and that the seeds are sticky enough to secure themselves to the barks' surface, until its hypocotyl (stem beneath the stalks of the seed leaves) emerges. It is an especially distinct plant, forming a mass of paired, lime-green, veined leaves. Translucent, white berries sit at the union of a pair of leaves.

Mistletoe growing on sacred trees has long been held in high esteem by druids, who believed it warded off evil spirits, and considered that it brought both good luck and fertility.. It is this paganistic link which resulted in the banning of mistletoe from many parish churches. Having no roots, nor obvious food source, it was regarded as magical during the Medieval Age. Its ability to remain green-leaved throughout the year, while other plants defoliated, further added to the intrigue. During this same period concoctions containing mistletoe were used to treat epilepsy and tumours. The plant was also believed to deter witches. It was also widely regarded as a fertility symbol and aphrodisiac, and ladies tied a sprig of mistletoe around their waist or wrist to increase fertility. This association with fertility did not stop at humans, with rituals evolving to improve soil fertility. In Herefordshire the practice of 'Burning the Bush' was widely adopted. Orbs of mistletoe and hawthorn were constructed, and these were set alight and dragged across fields to purify the ground and increase crop yields. In neighbouring Worcestershire mistletoe was hung with other greenery to decorate doorways and hallways, and it is from this origin that the tradition of kissing under the mistletoe began.

Today, much of the mistletoe available commercially is imported from France, though a handful of commercial suppliers exist in Worcestershire and Gloucestershire. Mistletoe is more obvious during the winter months when its orbicular form is silhouetted against the sky amongst the leafless limbs of deciduous trees. Here at Cambridge Botanic Garden an increasing number of host plants can be seen garnished with the globe-like masses of this fascinating plant.



Cambridge University Botanic Garden will be closed from 4pm on Saturday 23rd December and will re-open on Tuesday 2nd January at 10am For details about opening times, admission charges, tours, courses and the latest information about upcoming events visit www.botanic.cam.ac.uk or telephone 01223 33626.

News from Bottisham Medical Practice Patients' Group

Result: The tombolas held at the Saturday morning flu clinics made £91.50 to go towards a piece of medical equipment which is yet to be decided.

Christmas Dispensary Arrangements: When ordering in November & December you can order **two months' worth** so you have enough to cover you over the festivities, just add "2 months for xmas" on your repeat when you order.

It helps us greatly if you request all your items together and allow a little longer when ordering more than one month, 3 to 4 working days will be very helpful. If you are going away for longer we can only arrange a maximum of 3 months' supply of medication. Please speak to the dispensary staff who will help you with these arrangements. You don't need to speak to a GP to order your medication"

Nurse Practitioner: You will now be able to prebook into the Nurse Practitioner appointments on line. These are for minor illness.

Mental Health: There are lots of tips in the Practice Newsletter to help you look after your Mental Health and Wellbeing this winter.

Bottisham Patients' Group: The Patients' Group would be delighted to hear from you – please see the notice board in the waiting room for details, speak to the receptionist or look at the practice's website for further information <http://www.mysurgerywebsite.co.uk/ppg.aspx?p=D81055> and see what your Patients' Group has achieved. We would welcome help with running the group.

Walks for Health: The next walks with our accredited walk leader Steve Gilson start at 11.00 am from the surgery car park on 8 and 20 December 2017, 12 and 24 January, 9 and 21 February 2018. Do join Steve for a walk he would be delighted to see you. Anglesey Abbey walks continue on Thursdays at 10am from the reception area.

Next Meeting: Next meeting will be **Thursday 25 January 2018 at 6.30pm at the surgery.**
Bottisham Patients' Group



Notes from Parish Council November Meeting

John Covill chaired the meeting with seven Parish Councillors and six members of the public in attendance. The meeting started at 7.30 pm.

Members' Declaration of Interest for Items on the Agenda + Requests for Dispensations: None.

Public Participation:

Ms. Emma Fletcher and Mr. Mike Barker addressed the meeting regarding the CLT Village Heating system. There had been a letter drop to 220 houses in the village and the CLT had received 87 responses. These were all largely supportive, with much interest in the fibre optic option, which would now definitely be included. Consultants are completing the feasibility survey, with a draft report due 1/12/17. Government funding is available from HNDU (Heat Network Delivery Unit) up to 31/12/17 of £75K which would need to be match funded up to £25K by East Cambs and County Councils. This would be spent on the next stage, which would be a technical review. There is still work to do, but so far it looks promising.

Reports:

ECDC: Cllr Allen Alderson's report was read out. The ECDC Local Plan has been ratified and is now out for public consultation. It should come into force next summer. The village envelopes and stop lines are now back in place, which affects all new planning applications. Some ECDC councillors met with James Palmer, the Mayor of the Combined Authority. They discussed several local infrastructure improvements, and the Government wants to see 100,000 more houses in Cambridgeshire. Cllr Alderson responded that this was impossible without the right infrastructure in place. Next year the Veolia bin collecting and recycling will be taken back in-house by ECDC. A second blue bin per household will be made available.

CCC: Nothing received. The Clerk to be asked to email Joshua Schumann and officially request a quarterly written report.

Matters Arising from Previous Minutes (for information only):

The grass seed that Mike Malster sowed in the Cemetery spoil heap has not taken. He will purchase and sow fresh seed. Steve Kent-Phillips has contacted local groups, with just the Scouts and WI left to respond. It was clarified that snowdrops "in the green" would be supplied, not dry bulbs. Steve Kent-Phillips will get quotes for these instead.

Consideration of planning applications:

98/00645/FUL – Tree cutting on Greenhead Road – approved.

17/01762/FUL – Single story extension to 31 Fairview Grove – *there were no objections*

17/01375/FUL – Porch extension to 17 Rogers Road – *there were no objections*

CIL & Open Space Money Projects:

Steve Kent-Phillips reported that all the Open Spaces money has been spent bar 28 pence. There is still £4, 214 of CIL money left to spend. The cemetery project is now



closed, leaving just the play area open. The PC will now take new applications.

Replacement Grit Bin: Paul Latchford reported he had contacted Skanska, who would supply a bin for less than £200. It was proposed that Paul should proceed and get one. *Unanimously agreed.*

Local Plan:

David Greenfield reported that he had spoken with Richard Key, head of ECDC Strategic Planning regarding the land next to the cemetery, labelled SWP-H1 on the Draft Local Plan. The proposer had wanted 55 houses, but due to the Tree Protection Order (TPO) and the location, the limit was set at 20. Richard suggested we strengthen the site specific requirements in item 7.38.6 of the Swaffham Prior Local Plan.

There were four options:

Get the trees section removed from the plan

Strengthen the TPO

Strengthen the aspect of the churches, village views and footpaths

Get the 40 mph limit moved back further towards Swaffham Bulbeck

David Greenfield thought that option 1 was unlikely to succeed, but proposed he continued discussions with Richard Key regarding the other three options and comes back to the December meeting with some solid proposals. Paul Latchford agreed to help.

Village Hall:

The meeting was suspended to allow Peter Rand to speak.

The Village Hall Management Committee (VHMC) have agreed to pay for the other half of the skip hire to clear up the car park. Item 2161 states that the PC own the car park, but the VHMC have to keep it tidy as tenants. Insurance of the car park and garden was discussed as the VHMC are going to erect a two foot high picket fence with rounded tops in the garden. It was felt that the VHMC Public Liability insurance covered the garden as well. Ownership of the various elements was discussed. It appears that the land belongs to the PC but the Land Registry says the Trustees own it; the building belongs to the PC but the VHMC rent it, maintain it, and insure it.

The PC are awaiting a copy of the lease agreement to send to the SLCC solicitors for comment. It was agreed to hold the item over until SLCC have had some input.

Allotments:

Three tenants remain to be contacted, but nobody knew their addresses. Steve Kent-Phillips will progress this with the Clerk asap. There remains one outstanding application for an “upper” allotment.

Fairview Grove – additional hard standing / parking:

Michael Malster met Martin Mead and they discussed the options. It was felt it was better to have parking spaces all down one side rather than individual spaces. Steve Kent-Phillips also approached Martin for a quote for two bays of three cars each for comparison. Mike Malster agreed to put together an ECDC Minor Highway Improvement (MHI) bid. Steve Kent-Phillips is to send Mike the one he did in 2011.

SID (speed indicating device) loan agreement:

Paul Latchford had looked into the loan agreement using an example from Skanska



and one from Martin Mead. He will adapt one and bring it to the December meeting.

Approval of Grant of Exclusive Right of Burial. *Unanimously agreed.*

Clerk's Report: The Clerk apologised for his absence, and will be away next meeting as well. There is a CGM grass moving credit which will come off the next bill. The May 2016 credit is still outstanding

Parish Councillors' Reports:

Paul Latchford reported that the man from the Old Dairy is recharging his electric car using a cable going across the main road, which is an obvious hazard. The Clerk to be asked to write to him. David Greenfield attended a CPRE Planning Workshop.

John Covill spoke at length about the mishap in the cemetery regarding the recent burial, where the wrong grave was dug then filled back in. It was felt that marking all the reserved plots was impractical because of the mowing. Sandra Gynn pointed out the map is online, but nobody looked at it. She also pointed out the distress that the badly refilled grave was causing, and that there had never been a problem before. Andrew Camps will monitor the situation until the Clerk returns, when the PC will come up with a better system to handle burial plots.

John Covill reported a survey that Andrew Noyes did for the Parochial Church Charities (PCC) on the Youth Club Hut, which suggests that it might be repairable with a life of 20-30 more years. The PCC to get quotes once John Covill and Andrew Camps have cut back the vegetation to see the state of the lower woodwork.

Steve Kent-Phillips reported that the new waste bin that Mead Construction donated and the VHMC did not want has now been installed in the school playground. He has also moved the redundant black metal bin from the play area to the school playing field.

Sandra Gynn and Janet Wilmott (via Pop) will tidy up some of the old grave stones.

Open Question Time:

There is a street light out at the top of Adams Road. It will be reported to the number on the post as it is under the maintenance contract.

If anyone would like further information on any of the above items, please contact the Clerk or visit the website www.swaffham-prior.co.uk/PC.

Clerk: Paul Catling – Voice Mail 07040 908743 – clerk@swaffham-prior.co.uk

Notes from Parish Council October Meeting

John Covill chaired the meeting with eight Parish Councillors and five members of the public in attendance. The meeting started at 7.30 pm.

Reports:

ECDC Cllr Allen Alderson reported to the meeting. Peter Hart asked how Lode got a 30mph speed limit. Allen Alderson also mentioned their latest to Dalham Stud visit, that visits are not paid for by the council and that ECDC have the lowest allowances in East Anglia. Michael Malster's list of questions regarding ECDC recycling was passed on. John Covill asked about the high level of fly tipping prosecutions. Allen Alderson said that Cambs. was high but EC not so high. Steve Kent-Phillips asked about the fly tipping contact, which was Mark Mehaffey. Cllr Alderson stated that he was no longer the contact and not just to contact the ECDC



Waste department. Cllr Alderson noted that the chairman next visit helping local business was CD Foods in Fordham. Steve Kent-Phillips asked if help was for big businesses not small, Cllr Alderson said not all are big businesses. Paul Latchford asked about people in Hi-Vis jackets flying drones over the new cycle-way, who owns the data they collect and are the people accessing it DBS checked. Cllr Alderson offered to follow this up. David Greenfield noted that 106 money may have funded the cycle-way.

Matters Arising from Previous Minutes (for information only):

Steve Kent-Phillips noted that SID had not been up recently due to recent traveller activities. The best locations for SID were discussed, including the 60-40mph transition areas especially if Mill Hill's development were to go ahead. Paul Latchford asked if we had an agreement to loan SID. The Clerk agreed to check that SID was on the insurance. Paul Latchford offered to create a loan agreement. David Greenfield raised 2214, the Parish Council conference, which was a useful session. Michael Malster reported that the cemetery spoil heap area had been cleared and weeds burnt, Mead Construction had put in top soil and cleared up, certainly above and beyond. John Covill suggested and it was agreed to send a thank-you to Mead Construction. The area had been seeded but Michael Malster has put some old seed down and see how it goes. It may need some new seed. Steve Kent-Phillips reported that Meads were also poised to lay gravel for the path. Michael Malster reported the status of the next bulb planting project. He had spoken to David Almond and Janet Willmott who would investigate storage and planting but said that it may be difficult to get help. Steve Kent-Phillips asked if we were leaving it for a spring planting and if asking via PoP and WI would help. The PC would pay for the bulbs if they can be planted. Sandra Gynn suggested that school and Scouts be contacted. The type of bulbs was discussed. It was agreed that it would be a snowdrop initiative and to plant in spring. Michael Malster asked which allotment agreements were outstanding. It was agreed to send letters to the three people outstanding.

Consideration of planning applications:

17/01564/FUL: Conversion of an outbuilding barn into an annexe 26 High Street was considered. It was noted that this was actually a 3-bedroom house but could not be seen from the road and that this construction may help to maintain the clunch wall. *There were no objections.*

17/01071/FUL & 17/01072/FUL: Installation of a gas-powered generators and associated infrastructure on land west of Reach Road in Burwell was considered. Paul Latchford suggested there was not enough information and that the reduction from 75db level to 65db was an option not a part of the plan. David Greenfield noted that a new generator had been proposed and that technical arguments can be turned over or overcome. Paul Latchford noted that the new house development near the site was not considered. David Greenfield also stated that Cllr David Brown had said the plan had employment opportunities but the proposal did not employ anyone. Other possible sites were suggested, such as Factory Drove, which may need additional supply for gas but seems to have most of the other site requirements. It was agreed that David Greenfield and Paul Latchford would create and send a PC reply. *Unanimously agreed.*

CIL & Open Space Money Projects:



Steve Kent-Phillips reported on the CIL project status. Michael Malster had completed the cemetery, Andy Martin had repaired the cemetery gate catch and red paint on the footpath railings. The plaque for the pound was discussed and the material agreed was oak. Burning the words into the wood would cost around £50, with £56 left in Open Spaces budget. The new bulb planting could be funded from the CIL budget. The fund for legal costs regarding travellers would be kept back.

Replacement Grit Bin:

Paul Latchford reported no answer so far and he would follow it up.

Local Plan:

Update: The site at the top of the High Street – south of the village (SWP.H1 as it is now referred to) has been included but with a change in area. It seems the remaining part of the process is not consultation but an independent inspection and test of soundness. Paul Latchford had checked the TPO (tree preservation order) and the Clerk acknowledged receipt of the confirmed TPO (on the day of this meeting). Paul Latchford suggested that any development in the paddock would be difficult to resist but the TPO should prevent any plan in that area. He also added that any development in this area would probably require a roundabout on Cadenham Lane.

Action: David Greenfield had checked the plans and could not see any likelihood of change. It was agreed that any development on the paddock would be hard to resist but the TPO would help. David Greenfield suggested that the PC could enter consultation or wait for proposed plans to control any development, if proposed plans are applied for. Paul Latchford asked if Allen Alderson could ask Joe Brooks in planning. The draft Local Plan has been ratified, Steve Kent-Phillips asked if the Mill Hill development is now outside the building envelope. Allen Alderson said that it is but the proposal is in progress. David Greenfield noted that the government has not accepted the plan – yet and agreed to contact Rebecca during the consultation period. Paul Latchford noted the Tree Preservation Order that Cathy White had proposed. This was confirmed as in place. A copy would be sent to David Greenfield. *Unanimously agreed.*

Village Hall:

Legal: Steve Kent-Phillips suggested that the land registry must be fixed legally. The trustees are owners of the land and the PC should be. David Greenfield stated that he was not happy with some of the changes especially the Charities Commission as they have been selling land and allotments. We should employ a solicitor, especially to change the deeds. Peter Hart and Paul Latchford agreed and there was a discussion about legal fees expected. The current trustees were also discussed. It was agreed to ask the advice of the SLCC and possibly PKF Littejohn, who advise on the annual return. A copy of the current documents would be needed from the VHMC.

Maintenance and improvements: The meeting was suspended for public comment from Peter Rand:

Peter reviewed the VH repairs and improvements. Scottsdale's had supplied the new plants and the contractor quoted to remove the unsafe trees was £980. The man and digger cost £230 with help from Peter and Alan Durrant. The remaining spoil should not be burnt Alistair Everitt suggested it could, Sandra Gynn disagreed. He asked for the PC to fund £230 and grass seed. Michael Malster ask which trees had come down and it was agreed that Jason would not want the felled trees. Paul Latchford asked about the paving slabs requiring attention. Peter stated that they had not done the work but it would be

done by the VHMC. The grass seed was for the area beside the entrance drive. John Covill enquired about the amounts required. Peter said it would be: 230 for the digger, 20 for the grass seed, 30 for manure and 288 for a grab lorry to remove the spoil.



The discussion about the amount to fund resulted in half: £300. Sandra Gynn said that this time it was a large job and Mark Lewinski suggested over time, as it had not been done for some time the costs were very low overall. *Eight councillors for the proposal, one against.*

A second £300 for grab lorries may be needed but as this was not seen as a PC problem.

The meeting was suspended for further public comment from Peter Rand:

Peter reported that a rambling group in the car park had called it public. They had been told as such by a resident. Steve Kent-Phillips said that it was not public and Mark Lewinski suggested a sign saying, "Village Hall Car Park".

The proposed additional money for the spoil heap was further discussed. Paul Latchford said it was VH responsibility, so VH should fund it not the PC: *Five councillors in favour, two against, two abstained.*

Fairview Grove – additional hard standing / parking:

Michael Malster presented the problems of parking in Fairview Grove, including the turning circle which gets used as parking. Mike's graphical plan of proposed new parking bays was discussed. It was confirmed that they would allow for 4 additional cars. Peter Hart asked if the paths would be affected. As they are on what is a grass verge, the paths would not be affected. Sandra Gynn enquired if people currently park on the grass – Michael Malster: Yes and often making a mess of the grass. Peter Hart asked about emergency vehicle access and Steve Kent-Phillips stated that the proposal only benefits four. Michael Malster suggested that it was more, including the existing bays. Paul Latchford asked what argument was used with Highways before. David Greenfield pointed out that this kind of application is points based and 4 additional cars would not be enough but improving emergency access would, as it would benefit 32 houses. It was agreed to write to Highways: *Unanimously agreed.*

Clerk's Report:

The clerk reported an email from a resident regarding development in Lower End being the cause of a buyer backing out. The site is not in the draft local plan and the Clerk had found no existing proposals at ECDC.

Parish Councillors' Reports:

Sandra Gynn reported the school now have full staffing with 80% new staff and 1 supply teacher. Paul Latchford reported a break in, in a garage in Fairview Grove, a car window had been broken in the High Street and 2 lap tops stolen. John Covill mentioned the youth club hut and site is being cleared. He also reported the play area gates had been left open again.

Open Question Time:

Alastair Everitt asked for clarification about the Fairview Grove parking.

If anyone would like further information on any of the above items, please contact the Clerk or visit the website www.swaffham-prior.co.uk/PC.

Clerk: Paul Catling – Voice Mail 07040 908743 – clerk@swaffham-prior.co.uk



RENEW Church

****Christmas Dinner at Bottisham Primary School****

Will you or someone you know be alone on Christmas Day and rather have some company and enjoy Christmas dinner with others from our villages? See last month's village magazine for full details or contact me, Alan Brand (details below). We need to know if you'd like to join us **by Sunday 3rd December** at the latest so we can make the necessary preparations.

Come and see, take a closer look ...

I have written before that the best way to discover what RENEW is like is to 'come and see', and this invitation is constantly open to you, yes you! We are a small church with a big heart and a big vision. We look forward to welcoming more people from our villages who are curious about church, interested in finding out more about faith in Jesus Christ, or who have been invited by members of our congregation. It would also be amazing to welcome you if you are a Christian who has recently moved into Bottisham, Lode, The Swaffhams or Quy and you're looking for a church family to belong to, we are praying for you and looking forward to welcoming you. There's a place for you at RENEW.

'Come and see, take a closer look' is also a theme running through our Christmas services this year. Is there something different to see and experience if we take a closer look at the birth of Jesus and the events surrounding it, if we follow the signs, if we make the journey? See the service details below for details of our 'Carols at Lode Chapel' our 'Christmas Eve Service' (with contributions from the children & youth) and our 'Christmas Day Service'.

Alpha

We are looking to host another Alpha course starting in the New Year, check out www.alpha.org and if you are interested in discovering more about the person of Jesus and the claims of the Christian faith, we'd love you to join us. Please contact me to discuss or to sign up for Alpha.

I pray you will experience the love, joy, peace and hope that comes from following Jesus throughout this season and beyond.

Revd. Alan Brand

RENEW Church Services in December 2017.

*We have activities for children and young people at all our morning services.
A crèche is available if required. All are welcome.*

Croissants and drinks are available before Morning Worship from 10.10 am.

*Sunday 3rd December. Morning Worship. 10.30am
(Bottisham Primary School)*

*Sunday 10th December. Morning Worship. 10.30am (at the School)
Followed by shared lunch*

**Sunday 10th December. 'Carols at the Chapel' 6.30pm
(at Lode Chapel)**



Sunday 17th December. Morning Worship. 10.30am (at the School)

**Sunday 24th December. 'The Greatest Journey' Christmas Eve All-age Service.
10.30am (Bottisham Primary School)**

Christmas Day. 10.30am (Bottisham Primary School)

Sunday 31st December. Morning Worship. 10.30am (at the School)

Sunday 31st December. Evening Worship. 6.20pm (at Lode Chapel)

For more information about any of the activities of RENEW Church please contact:

Rev. Alan Brand on C.812558. Email: alan.brand@renewchurch.org.uk

Or visit our website at www.renewchurch.org.uk

FREECYCLE



If you have any offers or wants, please contact me by the 14th of each month by phone (01223 813362), e-mail (jun.thompson@tiscali.co.uk) or drop a note through the letter box (23 Longmeadow). Please let me know if you would like anything repeating in subsequent issues. Everything is free and nothing is expected in return. Please can you contact the offers after the 1st of the month to make it a little fairer.

Offered

Pale green Riser/recliner chair (with electric control). Good condition but has one mark on it. To collect please. Jenny 01223 811525

Brand new coffee table- 125x50 cms. Glass top: wicker sides: for indoor or outdoor use.

Margaret. 01638 744390 or 07841932971

Extending wood patio table and 6 folding high backed wood chairs. Seats 6 before extending. Used but in generally good condition. Collection needed. Chris and Judith 01223 812085

G Plan saddleback armchair- sage green. recently re-upholstered. Mike or Margaret 01638 741495

Wanted

Wire hanging baskets. Fibre (not plastic!) wall plugs (rawlplugs), sizes no. 8 or no. 10. Bob or Nicky, 01223 813592

Your old light fittings, brown Bakelite switches, iron conduit and switches, bulb holders and holders. Sheets and bits of bakelite. Postcard rack (carousel if possible). George 07895 064727.



PASTORAL LETTER, December 2017
Group of Churches

Anglesey

Dear Friends,

Dottie my aged bantam finally succumbed and literally “fell off her perch” one night recently. She wasn’t much of a looker – and when she moulted she looked an absolute sight – more fitting for the roasting tin than roaming around the garden.



Apparently it is what is expected from her breed – a “frizzle” – basically she looked as if she stuck her beak in the electric socket and all her feathers stood up on end. She, dear thing, was not one of life’s beauties. Yet she had many endearing qualities – or so her mate Bertie thought. He was devoted, and seemed not to care one jot that she was quite honestly the ugliest hen in Dullingham.

Maybe we could learn something from the bantams. Perhaps we need to see beyond the superficial, what people look like, how they dress, how they speak, whether they “fit in.” Perhaps we need to look underneath all this, to see people as they are, not so much as we see them. I was accosted the other evening as I was tiredly waiting for a delayed train in London, by a young lad who was begging. At first all I saw was another beggar hustling for money – sadly a too frequent occurrence on the streets of London and elsewhere. My immediate reaction was to shake my head. He walked on to try someone else – and so it went through the crowd of commuters. No-one even made eye contact with him, we all saw him as one more nuisance as we waited for the train. I was brought up short and sharp. Because he wasn’t, and isn’t, one more anything. He is a unique person, beloved of God. He is someone’s child, and my fellow resident here on earth. I tried to find him to give him something, but he had gone, I had lost him in the crowd.

That nameless young man and dear old Dottie have brought home to me how superficial and instant can be our judgements. Yet Jesus bucked the trend – he sought out those society judged – the poor, the ostracised, the outcasts. The Bible – both Old and New testaments, tell us repeatedly to care for those in need and who are “different” as part not only of our human solidarity, but also as part of God’s reaching out in love.

I have a short prayer I say each morning – and I leave it with you

God, grant me this day generosity of spirit, clarity of mind, and warmth of affection.

May that generosity and warmth be each of ours in the coming days.

God’s blessings

Gina Radford, Curate



Church Services in December

in St Mary's, Swaffham Prior unless otherwise indicated

Sunday 3 December, First Sunday of Advent

- 11am Christingle & Nativity Family Service, in aid of the Children's Society
- 4pm Advent by Candlelight, Cambridge Voices in the two churches, £10

Sunday 10 December, Second Sunday of Advent

- 11am Benefice Service Holy Communion - Bot-tisham

Sunday 17 December, Third Sunday of Advent

- 4.30pm Carol Service, with Primary School Choir

Sunday 24 December, Christmas Eve

- 3pm Crib Service, for all the family

Monday 25 December, Christmas Day

- 8am Holy Communion (BCP) - Quay
- 10am Benefice Service Family Communion

Sunday 31 December, First Sunday of Christmas

- 10am Benefice Service Family Communion - Lode

**HAPPY
CHRISTMAS
ALL
OUR
READERS!**



Dates for Your Diary December 2017

Sun	3	Christingle, St Mary's, 11am Advent by Candlelight, St Mary's and St Cyriac's, 4pm
Wed	13	Village Carols, from and to Village Hall, 6.30-7.30 [8]
Thu	14	PC Meeting, 7pm, VH
Sun	17	Village Carol Service , 4.30pm, St Mary's [3]
Tue	19	Mobile Library, Cage Hill 2.45-3.15pm Chapel 3.20pm-4.00pm
Sun	24	Crib Service, 3pm, St Mary's [3]
Mon	25	CHRITMAS DAY
Tues	26	Boxing Day Hockey, 10.45, The Denny [11]
Wed	27	
Thu	28	Crier Copy Deadline
JANUARY		
Wed	19	Coffee Morning, 10.30-12 noon, 4 Fosters Lane [6]

Club	Contact	Tel.	Date	Time	Place
FOSPS	Clare Freeman	741316	2 nd Mon of Term	8pm	Village School
Cubs	Tim Doe	743656	Weds (term)	6:00-7:30pm	Village School
Reading Group	Brenda Wilson	743937	1 st Weds of month	8:00pm	(See Crier)
Scouts	Tim Doe	743656	Weds (term)	6:15-7:45pm	Village School
Village Gardeners	Margaret Joyce	744390	3 rd Tues of month	8:00pm	Village Hall
WI	Pat Cook	742224	3 rd Mon of month	7.30 pm	Village Hall
Youth Club	Alan Badcock	742228	Tues	7-8:30pm	Youth Club Hut Hut
			Thurs	7-10:00pm	