



The Swaffham Crier

Volume XXXVIII Number 5

May 2014



Editorial

A Big Welcome to Toni and David, who've just moved into the Red Lion. Closely followed by the rest of the village, so we hear, with emergency delivery reorders to a startled Batemans (*how many*

barrels?) and the new landlord and lady serving to packed houses from the off. David wants the Lion to be the hub of our local community. He's a local chef who has worked in many of our neighbouring pubs and restaurants, his food is reportedly delicious and we can vouch for his tapas (yes, *tapas!*) which tonight included snails and haggis balls, all munched in the delightful company of fellow villagers we've not seen for ages — readers, this is going to be some *hub!* And many thanks for their very generous CROSSWORD prize—aficionados will note it's a Bywell this month (yes, the hard one!) so who will be the first to win that Sunday lunch?

The new bridge over Reach Lode is in trouble already in trouble (see

Letters). This is of course the Fen Flyover, and since it often comes into the daily dog-walk, we too can't help but notice that there seems to be less of it every day. They didn't make it *entirely* out of concrete and steel, big mistake, everything-else evidently makes extremely good firewood in this rather chilly spring!

Congratulations to ex-editor Betty Prime, 90 last month, (if only we could look as good as she does now), many, many apologies Deborah Monteiro for missing the first her *Made in East Anglia* lectures at the Village Hall (see p.18) and don't forget, Land Girls memorial, this Saturday!

Caroline Matheson



The Fen Flyover

Regulars

Letters	2
Bon Mot	3
Our Reporter	4
Let the bells ring out	9
CROSSWORD	10
Ophir	12
Bottisham Patients	17
Village Gardeners	18,19
Mothers' Union	19
Anglesey Abbey News	2
Botanic Gardens	21
Cllr Brown	22
PC Meeting	23
Renew	25
Freecycle	26
Sue Giles	26
Church Services	27
Dairy & Clubs	28

News, Views & Reviews

Land Girls Plaque Unveiling	6
Destiny Falls	8
Just a nonsense	12
Betty Prime at 90	14

What's On

Annual Village Assembly	3
Murder Mystery	7
St Mary's Windows	9
SB Summer Theatre	12
Cantilena Singers	13
Action for Addenbrookes	13
Midsummer Market	15
Bang goes the Swaffhams	16
Made in East Anglia	18

Cover Picture: Dig for Victory by Joyce Baldwin W.L.A. (*see inside*)



Letters to the Editors



Dear Editors,

QUIZ NIGHT

We would like to thank everyone who came to the quiz on the 12th April. It was a different venue this time, as it was held in the school hall, it was strange as you expected the headmistress to walk in at any moment. We hope people found it comfortable enough as we were having to use tables from one of the classrooms. Another thing that was different, we had a quiz mistress this time. Janet Willmott stepped in for Andrew and what a good job she did too, thank you very much Janet, be careful Andrew your job could be in jeopardy.

Congratulations goes to the team, NFC who were our winners. Thank you to April who, as always, organised the raffle and thank you to the people who donated the prizes. A big thank you goes to Betty, Shirley, Linda and Sheila who once again

helped with the food, much appreciated. The money raised on the night for St. Mary's church was £300 thank you.

If you all enjoyed yourselves, the next quiz is on the 22nd November, watch The Crier for details nearer the time, hope to see you all there.

Lynne and Jenny

Dear Editors,

Elizabeth Coteman Trust Coffee Morning

Just to say a very big thank you to those who sent donations and came to the coffee morning.

Every one was so generous-making cakes, giving raffle prizes and buying cards and pottery Amazingly it raised 650-00 for the Trust. They were of course delighted. Thank you all again.

Margaret Joyce

Dear Editors,

Land Army Girls

Please could I thank Karen King (without whom it would not have happened) and everyone involved or their help and donations in sorting out the Land Army Girls memorial due to be put at the bottom of Cage Hill. And a very big thanks for building the plinth voluntary to Martin mead.

Andrew Prince

Dear Editors,

Open Gardens

Just a quick note to say we are having an open garden this month. It is at The Paddock, 43 Lower end, Swaffham Prior, Cambs, CB25 0HT. We are opening for the NGS on Sunday 25th May 2-6pm

Judi and Mike Churcher

Dear Editors,

Wicken Vision

I have opposed the National Trust's so-called 'Wicken Vision' since its inception because it involves the abuse and misuse of thousands of acres of our finest food-growing Fen farmland and because I have had considerable doubts as to the Trust's capability to cope with such a scheme.

Despite my opposition I have attended many meetings at Wicken and elsewhere. I attended the most recent one (still as a representative of Swaffham Prior) and came away in despair in part because the concerns of myself and others (from Burwell and Reach) were either ignored or shouted down.

It appears that there are problems with the huge bridge over Reach Lode - now described as a 'ski slope' - that will cost much time and money to rectify; it appears that travellers who have been a nuisance in Burwell Fen are still a nuisance in Swaffham Prior Fen; it appears that the Trust has had to go to law and to employ bailiffs to remove travellers' horses from Burwell Fen; it appears that vandalism to the Trust's property and the letting loose of cattle have followed; it appears that increased car parking problems in Wicken village - problems which we do not wish to see replicated in Burwell, Reach and Swaffham Prior - are still not resolved despite endless debate and discussion over at least fifteen years to my certain knowledge; and it appears that the Trust has money worries, too.

My opinion is that 'the old' Wicken Fen was and is acceptable but that the wider 'Wicken Vision' is a silly concept and unmanageable by the present management. Much public money has gone into it: much public money appears to have been mispent. It's time for the waste to be stopped.

Geoffrey Woollard

Don't forget.....

**ANNUAL VILLAGE ASSEMBLY
WEDNESDAY, 28TH MAY 2014
7.30PM AT THE VILLAGE HALL**

BON MOT NUMBER FORTY THREE

**"Let thy fortune be what it will, 'tis thy mind alone
that makes thee poor or rich, miserable or happy."**

(The Anatomy of Melancholy) *Richard Burton* (1577-1640)

From our Reporter at the Parish Council Meeting

Neither CCC or ECDC councillors were able to attend but in his CCC written report David Brown announced that more funding was being made available for schools (how much was not announced) and that there is talk of restoring the March to Wisbech railway line. Following the last meeting Steve had had his meeting with the youngsters; they don't want a skateboard park but a scooter park which would take up no more space than the slide. This will be on the May agenda when the youngsters' working committee will bring quotes, pictures, together with a proposal for the PC to consider. The proposed site would be in the area beyond the Play Area, and neither the Youth Club nor the Charities has any objection.



There has been a request by some residents on the High Street to trim or remove some of the trees at the back of the Village Hall car park, some of which are in the car park and some in the meadow beyond. So, we all traipsed outside to have a look, and all/most agreed there was no need to take any action. Except that one person noticed that two of the trees are covered in Ivy, as also are two in the driveway. Defenders of Ivy say it is needed for bugs and butterflies as if there wasn't enough Ivy around to breed a plague. The PC appeared not to have any concern with the mutilation (for want of a better word) of so many trees by Ivy.

The revised planning application for the Dencora Field was approved, the number of parking places for cars has been increased (so much for 'sustainable transport') and some of the proposed vegetation is Light Finger Ivy, which one butterfly-loving member gleefully pointed out.

Now we come to one of those moments in any meeting which every reporter dreams of. Steve put up his hand, apologised and said he had made the most grievous error in having spent £420 of PC (our!) money without any PC approval. Karen had received the invoice out of the blue and, so I believe, did her nut. So how could this have happened with possibly our most meticulous and efficient PCRf ever. Any reader who remains, now needs to concentrate for a moment in order to understand the distribution of financial responsibility within the PC. Karen King is the RFO (Responsible Financial Officer) and is the legal entity responsible for the money. Steve is the PCRf (Parish Councillor Responsible for Finance) and the PCRf is the "internal auditor" responsible for oversight. It is worth remembering this, as it may never be said again, ever.

It all began when the PC agree to replace the two ex-Station seats which had been located on the pavement outside the Village Hall and which had rotted. Steve did not think the cast iron end frames would survive being removed from the concrete base. But this was underestimating Simon King. Simon did salvage them. What to do? It was agreed he takes them to Royston to be dipped. On their return Simon asked whether they should be painted. Go ahead said Steve, pleased that this part of village history was being salvaged. Then Simon asked what wood would Steve like for the new planks. Use the best, Japanese hard wood. With that done – "Where do you want them?" In front of the Village Hall was the answer. It must be

remembered that each stage of this involved weeks, or even months.

The PC was a little astonished, was not convinced by Steve's hesitant "Maybe I mentioned it at various times", and measures were proposed that this should never happen again. As various proposals were being put forward, Karen, as RFO, interrupted and said "parish councillors can **NEVER** incur **ANY** expenditure without the approval of the PC". Only she, as Parish Clerk, has the authority to spend up to £200 in any emergency without previous reference to the Parish Council.

Eventually they forgave Steve and admitted they were "lovely seats". And after the Chesterton/Cambridge railway has been restored there is a rumour that the railway between Burwell and Cambridge will also be renewed with compulsory purchase of all the old track and stations. If this does occur it may be possible one day for the seats to be returned to their original position. So, all is well that ends well.

The cemetery leak problem has at last been resolved at the cost of £868. A new pipe has been laid, a new tap installed, and one of the meters removed. It appears that Alex Kirby was worried about the fate of his Short Stumpy Carrots while all the work was going on. Dog waste in Coopers Lane is still a problem it seems. Various proposals were made and I think the meeting concluded that there are just a few irresponsible dog owners and those few should be named and shamed. So, get to it.

Steve, as PCRF, reported that they had a £6,700 surplus this year. Everyone got very excited until he explained. I didn't follow all the details but the reason given is that the bills for the seats and the water repair will be paid next year, we hold £1,800 for the Land Trust until it wants it, there were four less grass cuts last year, part of Karen's salary was shared with Bulbeck (this no longer happens), and there was an underestimate by some body which surprisingly gave extra money, and Steve said "You never look a gift horse in the mouth". When he said these words a bell rang in my head. Where had I come across that phrase so very recently?

Then I remembered. I had intended to attend the Annual Parochial Church Meeting the week before the PC meeting. At the last minute I couldn't attend but I had seen the various reports. The treasurer's report mentioned the painted railings and the new path, and also the "critical comments from the Parish Council". It went on to say, "There are always some people who will look a gift horse in the mouth!" I had thought any ill feeling over the path had been resolved by the correspondence in the *Crier* last year. Sadly this appears not to be the case, and this is a pity in a small village where surely a discussion could settle the matter. Why not have a debate in the Village Hall on the issue, which is:- "Was the PCC misguided in not informing the Parish Council, ECDC, the Churches Conservation Trust and residents of the Village before carrying out such radical work on the Churchyard path."

I know the PCC is able to marshal some very experienced debaters, while the PC would be able to call upon a range of villagers on whose behalf they had originally spoken. Will the PCC accept the challenge? Or maybe respond in the *Crier*?

There was one minor highlight during the middle of the meeting, when "the last ever *South Neighbourhood Panel* newsletter" was distributed. It is amazing it had managed to languish on for 7 seven years. However, in the previous newsletter I did come across one item of interest. In the middle of 2013 the CCC reviewed the Quay traffic calming scheme. I quote "Although the scheme seems to be unpopular with

residents, there is no justification for the County Council to spend its limited financial resources for road safety activities on removal of this scheme. There would, however, be no significant problems if the Parish Council wished to consider providing funding for the removal of this scheme.”

Alastair Everitt

“THE LAND GIRLS”

**JOIN US ON
SATURDAY, 3rd MAY 2014
AT 12.00 MID-DAY
FOR THE UNVEILING OF
THE COMMEMORATIVE PLAQUE
IN MEMORY OF
THE WOMEN’S LAND ARMY -
(*near Village Sign, Cage Hill*)**

EVERYONE WELCOME

Free compost from green buns

To promote Compost Awareness Week from 5th to 11th May 2014 East Cambridgeshire District Council will be giving away soil improver made from the green waste put out by residents in their green lidded bins.

Residents are invited to bring their own bags and collect some soil improver to help their gardens grow!

There will also be information about how your recycling and garden waste is processed and the chance to enter a prize draw.

There will be two events:

Fountain Lane Car Park, Soham, Tuesday 6th May, 9am until 4pm.

Tesco, Angel Drove, Ely, Thursday 8th May 9am until 4pm



Calling all budding Sherlocks...

**MURDER MYSTERY EVENING
AND SUPPER**

Saturday 17th May, 2014
7.30pm
Somewhere in Swaffham Prior!!

Limited places available – don't delay

**Reserve your place by calling
Janet, 743472, tickets £17.50 each**



Profits in aid of St Mary's Church, Swaffham Prior



SP author's first book....

DESTINY FALLS

By Sarah Monteiro

Many congratulations to Sarah Monteiro, a young resident of Swaffham Prior who at only 19 years of age, is one of the youngest authors ever to be published by Pegasus Press. *Destiny Falls* is the first in a trilogy, and here's what Pegasus says about book and author:

About the book

Nineteen-year-old Solly is beautiful, talented and courageous — the linchpin of an Alpine Search and Rescue unit, and the leader of a highly competitive ski tournament team. With the handsome and charming Gwain by her side, a host of colourful friends, and an abandoned wolf cub for company, what could possibly go wrong?

But hidden away among the snowy peaks, all is not well in the sleepy village of La Tourunche. Not long after Solena's awaited return, a mysterious and elusive figure begins watching her from the woods. Is he a figment of her imagination or real? And what is the secret behind the talisman hanging on the wall of Madame Perregaux's dress shop?

As the plot begins to thicken, a member of the team begins to wreak havoc and with time their motivations become all too clear. Events take a turn for the worst and matters are left on a jaw-dropping cliff-hanger — quite literally! As lives hang precariously in the balance, all hope seems to be lost. But will someone come to the rescue or is it too late for Solena?

About the author

Born in Cambridge, nineteen-year-old actress, model and writer. Saffra Monteiro, known by her friends as Bambi, is very young for someone who has already had a far from ordinary life.

Early teenhood was made impossibly hard for her by bullying, followed in her mid teens by extremely poor health after contracting a severe form of flu. As a true fighter she pulled through the worst of it — writing during her illness became a crucial life line and creative outlet which saved her.

Now a strong minded, pretty young lady, she has completed her GCSEs and A levels with flying colours. She has immersed herself in the world of writing and is passionate about what she does. It is a huge achievement for her to be one of the youngest writers to be published with Pegasus.

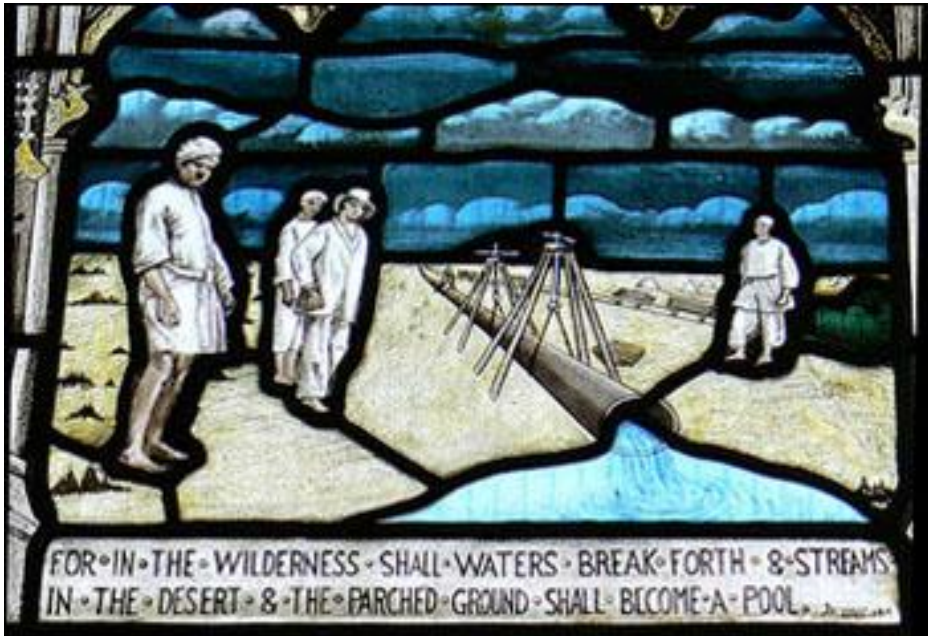


Please keep the date: Friday 14 November 2014

To commemorate the centenary of the outbreak of the First World War we will be holding an event to study the unique war memorial windows in St Mary's.

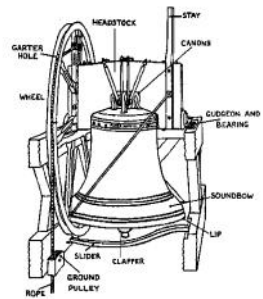
Professor Jolyon Mitchell will put the windows into local, national and international historical context and provide insight into the fears, hopes, and heart-breaks of 1914-1919.

In aid of the RBL and St Mary's, Swaffham Prior. More details in The Crier in due course.



LET THE BELLS RING OUT

The bells have been hanging silently for many months but Saturday 3rd May will hear them raised from their slumbers with a flurry of ringing starting at 10 o'clock in the morning. Some clerics and their chums are coming down south to attempt to ring a peal at St Cyriac's. With a peal taking up to three hours to ring this is no mean feat but Rev Price and Father Daniels have already clocked up over 950 peals together. When they leave to go to Lakenheath to ring another peal in the afternoon, we are welcoming a visiting band of thirty ringers and their families from Durham. Lots of ringing on one day but pure chance it worked out this way.



Primrose Surprise Minor

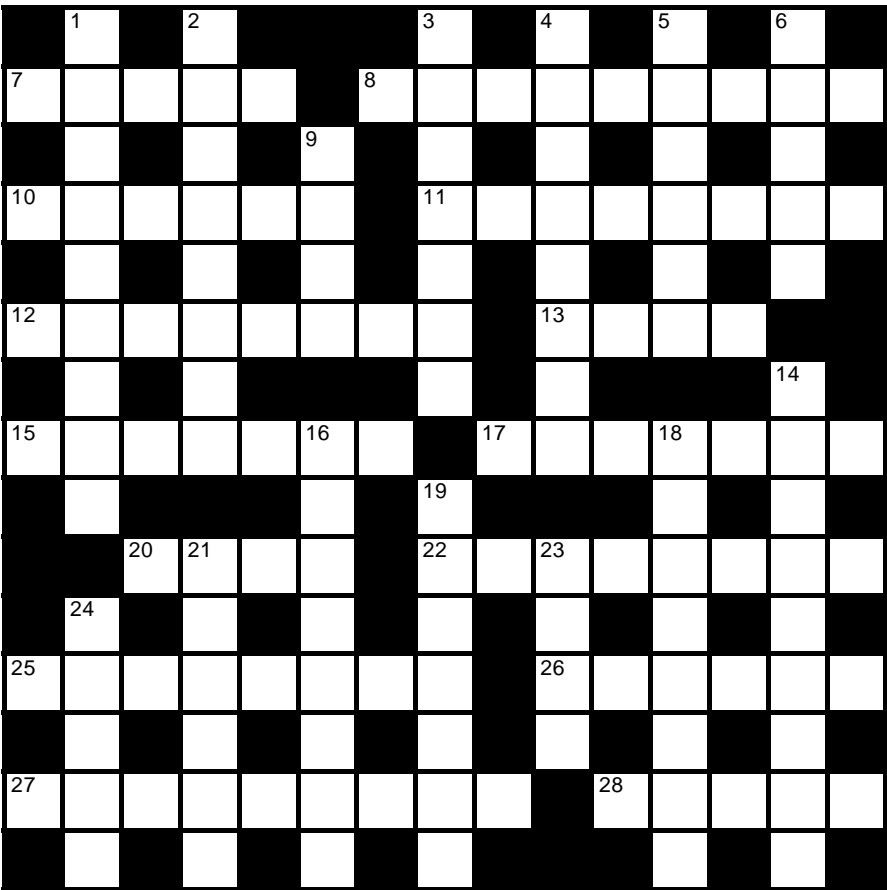
Crossword Number 111

Compiled by

Sponsored by **The Red Lion**

BYWELL

This month's puzzle is a simple cryptic crossword. Send your answers to the editors by 18 May 2014. The first correct solution out of the hat will win a Sunday Lunch main course for two at the Red Lion—See the Manager at the pub for full details.



Name:.....
Address:.....
.....Tel:.....

Across

- 7 One ordering upstart to get in close to the Queen (5)
- 8 Run and get pan for disgusting fry-up (9)
- 10 Cape river running cold and hot inside (6)
- 11 Disguise in slum suit can cause a stir (8)
- 12 Great musical booking a ludicrous act (8)
- 13 Each distress is a pain (4)
- 15 Cat-people watching Indian music-makers (3-4)
- 17 First of fancy titles reinstated by Benn, perhaps (7)
- 20 Semi-desert hospitality for a day in Rome long ago (4)
- 22 Left post for new designer (8)
- 25 Street toilet said to meet approval in Germany, praise be (8)
- 26 Anxious to change us a yen (6)
- 27 Pleasing aura of pigtail in chopped fleawort (9)
- 28 Rubenesque dandies reported round Minehead (5)

Down

- 1 A perfect place almost, with Sodomite as guide (9)
- 2 Trader intended to include leaders of Roman Catholic hierarchy (8)
- 3 Cakes is digested poorly (7)
- 4 Ultimate form of mangle (8)
- 5 Attack or shun devastation (6)

- 6 Happen after we get back into bearing (5)
- 9 Up to no good, make a sad face (4)
- 14 While Iranian listened to slander (9)
- 16 Be wrong about new decentralised Judaism for example, on the rise (8)
- 18 Gut and podge improperly dressed for the occasion (6,2)
- 19 Logic behind the first betrayal (7)
- 21 Extend river marker (6)
- 23 As clouds travel south with material to chew on (4)
- 24 Polish trainee inside bank (5)

Solution to crossword no. 110

S	O	L	A	R	S	Y	S	T	E	M		C	U	B
O		I				A		I		O		O		A
A	B	S	T	A	I	N		P	A	L	I	N	G	S
P		L		M		K		S		O		T		I
O	W	E		P	R	E	H	I	S	T	O	R	I	C
P				L		E		E		O		A		
E	N	D	L	E	S	S		R	I	V	U	L	E	T
R		I			I				K			T		E
A	L	G	E	B	R	A		S	E	A	F	O	O	D
		E		A		N		C		D				D
D	I	S	O	R	G	A	N	I	S	E		P	R	Y
I		T		I		L		A		U		L		B
T	H	I	R	S	T	Y		T	E	X	T	U	R	E
C		V		T		S		I				M		A
H	U	E		A	N	T	E	C	H	A	M	B	E	R

We congratulate Margaret Beckley, the winner of last month's competition, who should collect her prize certificate from the editors. Honourable mentions go to Malcolm Creese, Robert Nunn, S Richards and Trish Whitehead.

Swaffham Bulbeck Summer Theatre

Our 2014 performances of Gilbert & Sullivan's 'Patience' will be staged at our wonderful 'Theatre in a Barn', Downing Farm, Swaffham Bulbeck on:

Wednesday 11 June 2014 at 7.30pm - £9

Thursday 12 June 2014 at 7.30pm - £9

Friday 13 June 2014 at 7.30pm - £10

Saturday 14 June 2014 at 2.30pm (matinee) - £6 and 7.30pm - £10.

Our tickets will continue to be available to purchase **online from Ticket Source** <<http://sbst.ticketsource.co.uk/>> from 1 April 2014 and ticket prices remain **unchanged** as previous years.

Visit www.sbsummertheatre.com/ or call Business Manager, Ruth Dennis, for more details on 01638 508171.

THE VILLAGE SIGN

Do we need a village sign,
and where shall it be set?
It's not as though it could be used
as a maypole, yet
There seems to be a basic need –
a folk memory, or ghost
That compels some villagers
to erect a post.

A few in near-by villages
with a stronger primal urge
Have erected such a sign
on a patch of green or verge.
To tell by their complex design,
what we already know,
That we have at last arrived,
where we meant to go.

But do we need a village sign
that would scarce be used,
To merely stand somewhere,
quite still, waiting to be abused?
So if we wish to show our pride
and give the place a treat
Why not ensure that, far and wide,
there's no rubbish in the street?

Ophir

Just a Nonsense?

The Moyse Affair stirred the remains
of an addled brain
to recall a childhood jingle.

**“What noise annoys a
noisy oyster most?
A noisy noise annoys a
noisy oyster most.”**

A.N.S.

The Cantilena Singers
Summer Concert
St John the Evangelist Waterbeach, Station Road, Waterbeach,
CB25 9PX
Saturday 26th July 2014
5.00 pm

Director Daniel Spreadbury

A selection of unaccompanied choral music for a summer afternoon.

Tickets on the door
Refreshments available
Proceeds to the church

www.cantilenasingers.org

Action for
Addenbrooke's
Get involved, make a difference
Find out more online
www.act4addenbrookes.org/
Thank you



Calling all ACTION HEROES!

Challenge yourself to scale the
dizzying heights of
Needhams Building at Ely College
and abseil to raise funds for
Addenbrooke's and the Rosie
hospitals

When: Sunday 18th May 2014
Where: Ely College
£25.00 admin fee, suggested minimum sponsorship applies

Abseil for ACT and make a
difference
Call: Mercy Kaggwa on 01223 349805
www.act4addenbrookes.org.uk



act
Addenbrooke's
Charitable Trust
Registered charity number: 1045808

Betty Prime at 90

Betty Prime looking very elegant and spritely celebrated her 90th Birthday with a lunch for friends and family on the actual day, 26th April in the Village Hall. She introduced us to her large family, impressively remembering all their names including a great grandson, an adorable, lively, very happy 2 year old little boy who had travelled with his family from New Zealand .

Those of us who were there felt very privileged to be invited to share in this happy, family well organised occasion (they all evidently take after Betty)and probably like me secretly hope to be as lively as Betty, who tirelessly enjoyed every minute ,when we reach the same age.

I am sure many in the village send Betty congratulations and good wishes.

Kate Child





MIDSUMMER MARKET

St Cyriac's Church, Swaffham Prior

With the Churches Conservation Trust

Midsummer Market

Saturday and Sunday 14th and 15th June 2014

11.00am - 5.00pm Entrance Free

Plants * Books * Bric a Brac

Teas * Tombola

Furniture * Videos, CDs & DVDs * Toys

Tempting Togs

(any donations for stalls please call 01638 742974)

* * *

“Saturday Special”

6.00pm - 7.00pm

“Eccentric Clerics”

A talk by Roy Tricker

(see separate notice for details)

“Sunday Specials”

Handbell ringing by the Cage Hill Clangers

and Afternoon Tea accompanied by

Palm Court Music



BANG GOES THE SWAFFHAMS!

Thursday 5th June 17.00-19.30 St Cyriac's Church, Swaffham Prior

Cambridge Science Centre is coming to Swaffham Prior

Situated on Jesus Lane in Cambridge, the **Cambridge Science Centre** is a registered education charity established to show the importance of science, technology, engineering and mathematics (STEM) as vital skills for day-to-day life and future careers. The centre is dedicated to bringing science, technology, engineering and mathematics to life with fun, lively and hands-on activities.

To ensure that the impact of the centre reaches well beyond those able to visit central Cambridge, they have developed an extensive science outreach programme, sponsored the Marshall Group. The mobile exhibits include lively chats, intriguing experiments and amazing demonstrations.

As part of the outreach programme, the Cambridge Science Centre will be spending a week in June based in St Cyriac's Church in Swaffham Prior working with the school children from Swaffham Prior and Swaffham Bullbeck Primary Schools.

But to ensure no one misses out on having a go we are having a

FREE OPEN EVENING for **EVERYONE** in the neighbouring villages on:

THURSDAY 5TH JUNE 2014

1700 – 1930

ST CYRIAC'S CHURCH, HIGH STREET, SWAFFHAM PRIOR.

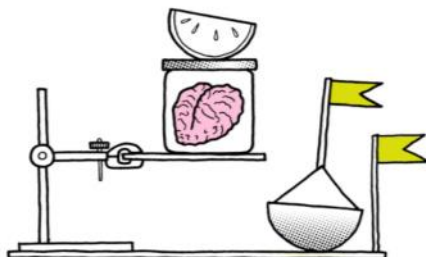
So dust down your white coats, come and try your hand at something new – we cannot guarantee you an "ology" but you will have **FUN!**

For more information contact:

David Beeb

Schools Co-ordinator

davidbeeb@cambridgesciencecentre.org



News from Bottisham Patients' Group

Action Plan for 2014

The following five points attempt to address concerns which should improve the services available to patients.

1. Increase patients' awareness of the Practice's services, systems and processes

Comments made in a survey showed that not all patients are aware of all the services provided by the Practice and clarification is needed to give them a better understanding of Primary Care and its limitations

2. Review current appointments system, clinics and opening times

While the Practice has employed an additional GP and provides above the national average of 100 appointments per 1000 patients, better methods of managing demand will be considered, e.g. telephone triage, where a doctor is available to give advice on the phone or see a patient with urgent need, and/or shift working. A nurse is currently training to provide the possibility of a Minor Ailments service. However, a further decrease in funding this year means that the Practice cannot consider extending opening times.

3. Improve the monthly repeat prescription and electronic prescription services

The Practice currently dispenses around 10,000 prescriptions each month. Improvements to these services are currently being investigated.

4. Promote greater awareness of opportunities for self-care

The PG will work with the Practice to encourage patients to keep themselves healthy, self-treat minor ailments and self-manage their long-term conditions where possible. The Practice's website currently receives between 5000 and 8000 hits a month. The range of advice available will be increased, including links to sites promoting health awareness, e.g. the Sell Cam Forum. Doctors and nurses will make patients more aware of useful sources of help and advice.

5. Increase the engagement of younger patients with the Practice

Although the age profile of patients at the Practice remains fairly stable, a need to engage patients aged 13-24 in health awareness is recognised. The PG will seek feedback from pupils at Bottisham Village College. Older People's Programme

The public consultation on these proposals to improve older people's healthcare and adult community services runs until 16th June 2014. Copies of the consultation document and questionnaire are available online:

www.cembddaeshireandoeterborouahcca.nhs.uk; by phone: 01223 725304; by post from: Freepost Plus RSCR-GSGK-XSHK, Cambridgeshire and Peterborough CCG, Lockton House, Clarendon Road, Cambridge CB2 8FH; or email: enaagement3?mbndaeshireandoeterborouahcco.nhs.uk. Have your say by completing the questionnaire and/or attending the consultation meetings. The ones in Cambridge are on 12th May from 1.00-2.30 pm at The Meadows Community Centre, St Catherine's Road, CB4 3XJ and on 6th June at 10.00 am-12 noon at the Central Library, Lion Yard.



VILLAGE GARDENERS

What a delightfully entertaining evening we spent at our April meeting when Jeff Harrison talked to us on 'Through the Year in a Nature Photographer's Garden'. Jeff explained that he is, first and foremost, a naturalist – definitely not a 'naturist'! – and uses photography as a tool for capturing wildlife. Jeff is an award-winning photographer who is licensed by Natural England to photograph kingfishers and barn owls on the nest. He is also a volunteer photographer for the National Trust at Wicken Fen and for the Great Fen Project.

Jeff first described the evolution of his quarter-acre garden in Longstanton from a patch full of builders' rubble in 1977 to the amazing haven for wildlife that it is today. The children rather dominated the garden for the first twenty years but then Jeff and his wife got to work in earnest. Many, varied trees were planted as well as two and a half thousand snowdrops, followed by two ponds linked by a stream – this soon attracted a grey wagtail, usually a bird of upland streams – success! There was also a resident kingfisher within six weeks – more success indeed. Jeff has had badgers visiting the garden every night for the past four years and a mallard duck regularly nests in ivy ten feet from the ground – he has seen the ducklings take their great leap of faith as they leave the nest and jump to the ground!

As you would expect from a professional photographer, Jeff's talk was illustrated throughout with absolutely stunning photographs of all the varied wildlife in his garden, from a scintillating dragonfly up close and smiling(!) to a magnificent face to face close-up of a cock pheasant in all his glorious plumage. A spectacular evening indeed.

Our next meeting will be on 20 May, as usual at 8pm in the Village Hall, when Barry Gayton will talk to us on 'Climbing Plants and Wall Shrubs'. Everyone is welcome.

A reminder too that there are still places left for our coach outing to Capel Manor Gardens on 21 June – please contact Peter Hart 01638 741681.

Mary Hart

MADE IN EAST ANGLIA

A new course on Tuesday or Wednesday mornings at the Village Hall, Swaffham Prior

From April 22nd to July 2nd

This is an opportunity to delve into the region's cultural heritage from Anglo-Saxon times through to the 21st century. We shall look at a wide range of art works and their historical development, covering jewellery and silverware, stained glass, paintings, early photography, prints and sculpture – all produced on our doorstep !

Email tutor at deborah.monteiro@btinternet.com for more details



Mothers' Union

Ros Wright came to speak to us about beads of prayer and their use in different cultures throughout the world. Telling us how they were originally made using leaves and flower petals. Ros brought along a rosary made of rose petals that she had made herself, together with other prayer beads from her collection. One of them having a cross with telescopic hole to look through and view pictures of the Somme – very apt for this 100th year anniversary of WWI. We were then given the opportunity to make our own personal prayer beads from the magnificent array of colourful beads Ros provided for us. This made for an enjoyable practical exercise over tea and biscuits.

Our meetings usually take place on the third Thursday of each month starting at 2.30pm in Lode Chapel. In May Wendy Lovell will be coming to speak to us about Fostering. You are most welcome to come along and join us.

We will be hosting the Quy and Fordham Deanery Mothers' Union Coffee Morning on Tuesday 20th May, in Lode Chapel 10am to 12 noon. Cakes, Books, Bring and Buy. You are cordially invited to come and join us. Proceeds for Mothers' Union Projects.

Anne Langran

THE VILLAGE. GARDENERS.
are going to
CAPEL MANOR GARDENS
on
SATURDAY. 21st. JUNE

If you are interested in joining us, please contact
Peter Hart, 1638 741681.



News from Anglesey Abbey & Wicken Fen

We are looking for local people who love Wicken Fen to become Community Ambassadors for the National Trust. Working with our Ranger Team you will help promote Wicken Fen and the Vision project within your local community. The role will involve opportunities to learn about Fen, supporting staff at off-site events, assisting the Ranger Team to monitor your local area of the wider nature reserve and taking part in occasional work on site. To find out more please speak or e-mail Ranger, Maddie Downes, on 01353 720274 or e-mail Mad-die.downes@nationaltrust.org.uk

In the autumn we will be developing some opportunities for reminiscence work to support those suffering from Alzheimer's or dementia. If you are involved in a local care organisation and would like to be kept up to date on the project please e-mail janet.jephcott@nationaltrust.org.uk

A weekend of fun activities is planned at Anglesey Abbey over the weekend of 10 -11 May as we take part in the National Mills Weekend, to celebrate our nations milling heritage. A range of family orientated activities are planned in and around the mill, including competitions to design a flour bag, bread making demonstrations and tours of the mill.

Looking further ahead, we have a host of self-led family activities planned at Anglesey Abbey for the half –term holiday including den building, story telling, tree climbing, bird watching and bug hunting. Activities run from Saturday 24 June – Sunday 1 June from 10.30am – 5pm (normal admission applies). On the 28 & 29 May between 2-4pm we will be running drop in activities to help families find out how to set up their own nature club and launching our online resource pack full of great ideas. See the Events page at www.nationaltrust.org.uk/angleseyabbey for more details.

At Wicken Fen, our Spring Talks @ Wicken series concludes on Wednesday 7 May, with a talk on the Anglesey Abbey Gardens, by Head Gardener, Richard Todd. The talk (free) starts at 11.30 in the Learning Centre. For the May half-term, we have Pond dipping & minibeast hunt on Tuesday 27 May, Age Range 3+, timed sessions from 10.30am £2.50 per child; and Springtime Arts & Crafts on Wednesday 28 May, 10.30am or 2pm, Age Range 3 – 10 years, £4.75 per child. Tickets for half-term events are available from the NT Box Office on 0844 249 1895 or by following the links from the Events page at www.nationaltrust.org.uk/wickenfen

If you've been inspired by recent reports in the press about the health benefits from eating seven portions of fruit and veg a day – how about growing your own. We have a number of allotments available in Lode – please call Janet Jephcott on 01223 810098 or e-mail janet.jephcott@nationaltrust.org.uk if you fancy taking on a plot.

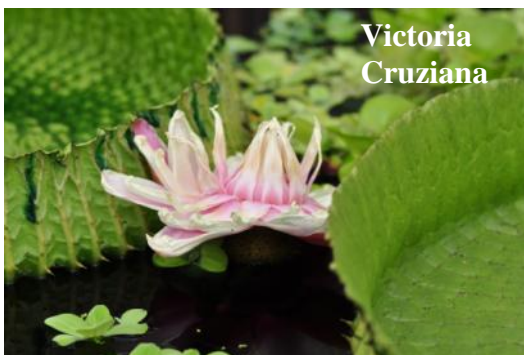
Talking of healthy things – don't forget our new regular weekly Heart Beat Health Walk every Thursday which will explore the local countryside around Anglesey Abbey. Leaving the main car-park at 1.30pm, walks cover a distance of 3-4 miles and last around an hour. Walks are free to join and dogs on leads are welcome (*or off, if they're good, Eds*).

CAMBRIDGE UNIVERSITY
BOTANIC GARDENS
WATERLILY WONDER

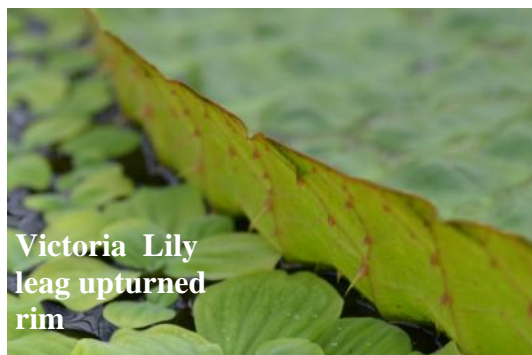
May sees the magical re-appearance of the waterlily. Fleshy ropes have stretched upwards from the rhizomatous tangle of roots embedded in the murk and mud of stretches of still water, to open out once the surface is breached into round leathery lily pads. These are followed by the gorgeous blooms, often scented, consisting of many whorls of satiny petals in a range of colour from pure white, through peach and pink to deep red. The flowers and lily pads are a hive of activity all summer, providing landing spots for dragonflies and damselflies as well as shelter and food for all sorts of snails and invertebrate larvae.

At the Botanic Garden, our Glasshouse Range allows us to display some really supersize waterlilies and this month we re-open our Tropical Wetlands house starring the Santa Cruz waterlily, *Victoria cruziana*. Initiating germination is horticulturally very challenging as a steady hand is needed to wield a penknife to prise off the operculum, a sort of lid, on the large round seeds, which are then submerged into warm water to germinate. Once the first hastate leaves give way to the first 'proper' rounded lily pad, growth is rapid: it takes just 90 days from germination for this native of the Paraguayan waterways to unroll a giant leaf up to 2 metres in diameter! The leaves are very strong and are intricately webbed underneath the spread the weight and allow the huge leaf to float. They also have a distinctive upturned, crimped edge, up to six centimetres in depth, with a couple of notches let in to allow rainwater to drain out.

But even more extraordinary is its floral biology. On the first evening, the bud opens to reveal a crown of beautiful white petals and emits a pineapple aroma. Chemical changes within the flower heat up the inflorescence, making it irresistible in the wild to scarab beetles, which arrive and scramble into the large internal chamber, intending to use this boudoir to feast on the special starchy food parcels made available and to seduce other six-legged visitors. The flower is currently female but as the second day dawns, it closes up, trapping the beetles within, and undergoes a sex change. The flower loses the pineapple aroma, the petals start to turn pink and the male stamens ripen to release pollen. On the



**Victoria
Cruziana**



**Victoria Lily
leaf upturned
rim**

second evening, the now male flower opens up for the second time to release its hoard of imprisoned beetles, which in scrabbling to leave become covered in pollen, which they carry off in search of another pure white, pineapple scented, and crucially, sexually female bloom.

So when you next notice pollen beetles climbing in and out of one of our native *Nymphaea* on the more sluggish stretches of the Cam or Ouse, spare a thought for the kidnapped scarab beetles overnighing in the Santa Cruz waterlily of Paraguay!

You can come and see how this year's Santa Cruz waterlily is growing at the Botanic Garden's Festival of Plants on 17 May, 10am-4pm. Admission is £4.50/£4.95 gift aid (£3.95/£4.30 concession) and accompanied children 16 and under are admitted free of charge. For further visitor information please call 01223 336265 or visit www.botanic.cam.ac.uk



From our Local County Councillor
David Brown

April saw the last meeting of Cabinet at the County Council in advance of the change to a committee system which will take place at the Annual Meeting of Council on 13th May 2014. The meeting had a lengthy agenda, with 31 items for determination covering a wide range of topics. These included strategies for highway maintenance and household recycling sites as well as more specific items such as authorising the disposal of a number of properties deemed to be surplus to requirements in the Council's property portfolio. I had a number of items to present including: joint commissioning arrangements with the Clinical Commissioning Group for Children's health services; the creation of a new Voluntary Adoption Agency in partnership with the adoption charity Coram, and the statement of sufficiency for Looked after Children (a legal requirement to say how the County Council will ensure we adequate resources to look after children coming into care of the Council).

April also saw an announcement by Cllr Martin Curtis that he would not be seeking re-election as Leader of the Conservative Group or as Leader of the Council. Cllr Steve Count, who represents March North, was elected as Leader Elect of the Conservative Group, to take effect from the Annual Meeting on 13th May, when a new Leader of the Council will also be elected.

I attended a meeting of the Constitution and Ethics Committee. This meeting agreed further amendments to the constitution in advance of the committee system and also considered formal complaints against 3 County Councillors. It was agreed to forward one of these complaints to a formal hearing for further investigation, whilst the other 2 were resolved on the day.

I also chaired meetings of the Children in Care Council and the Child Poverty Champions Group.

David Brown

Notes from Parish Council Meeting – 10th April 2014

John Covill chaired the meeting with 8 Parish Councillors and 3 members of the public in attendance.

Members' Declaration of Interest for Items on the Agenda + Requests for Dispensation: These were noted.

Public Participation:

Refurbishment of seats outside Village Hall: Steve Kent-Phillips explained that with the help of Simon King it had been possible to remove the old seats in one piece in readiness for the new ones to be installed. Simon King was then able to refurbish the seats and these were located each side of the front entrance to the Village Hall.

Reports:

CCC – The Clerk read out report provided by Cllr Brown as he was unable to attend.

ECDC – The Clerk read out report provided by Cllr Alderson as he was unable to attend.

Matters Arising from Previous Minutes:

Request for skate ramp: At a meeting with Steve Kent-Phillips the young people discussed the detail of their request for a “scooter park” rather than a “skate park”. They explained their plan of action which would include mapping, drawings, costings and obtaining letters of support. The group asked to attend the Annual Village Assembly to give a presentation on the project. *This was thought an excellent idea!*

Nominations for inclusion on 'Buildings of Local Interest' listing: Paul Latchford told meeting he had not received any nominations to date. There followed some discussion on possible buildings/structures for nomination.

Correspondence for Circulation/Consideration:

ECDC: Copy of approval for tree works at 37 High Street – *reducing one Yew.*

General: Letter received from High Street residents asking for some pruning/management of the trees to the rear of the Village Car Park. *The meeting was adjourned to give councillors the opportunity to inspect the trees. Following this it was generally agreed that no immediate action was needed but that the trees should be monitored.*

General: Letter received from grass cutting contractor K H Services confirming that they had reluctantly taken the decision for financial reasons to hand over the current contract to CGM Ltd as they felt unable to maintain the level of quality and care expected. The good news is that Kelley Harrington (K H Services) will continue to undertake or oversee the grass cutting in the village for CGM.

Consideration of Planning Application for Land off Rogers Road – *proposed development of 20 No dwellings.* Ref: 14/00303/FUM. *No objections or comments.*

Consideration of Planning Application for Goodwin Manor, 1 Station Road – *single storey garage extension to existing garage block to provide 6 No additional bays.* Ref: 14/00214/FUL. *No objections or comments.*

Consideration of Planning Application for 43 Lower End *existing outbuilding*.

Ref: 14/00292/FUL *No objections or comments.*

Consideration of Planning Application for The Manor House, 37 Lower End – *construction of stable block and greenhouse*. Ref: 14/00119/FUL. *No objections or comments.*

Consideration of Planning Application for 17 Mill Hill – *infill extension and erection of a new entrance*.

Ref: 14/00294/FUL. *No objections or comments.*

Repairs carried out to Cemetery Water Supply: Steve Kent-Phillips confirmed the installation of a new water pipe and tap – located by fence between allotments and cemetery.

Purchase and Installation of Dog Waste Bag Dispenser: Upon further consideration it was decided not to go ahead as adequate bins were already in place and owners should be responsible for their own supply of bags. To follow on.....

Friendly Reminder!

The problem of dog fouling on footpaths, etc., has again been highlighted and owners are reminded to clear up after their pets. This includes all areas used for dog walking!

Accounts for payment:

These were agreed.

Clerk's Reports:

No additional items.

Parish Councillors' Reports:

High Street/Lower End: Sandra Gynn told the meeting of her concerns about the speed of traffic through the village.

Year End Accounts: Steve Kent-Phillips reported on the Y/E accounts.

Open Question Time:

Accounts: Steve Kent-Phillips was asked for explanation of expenditure in the current year.

Water tap: Request for this to be reinstated near the playground.

Trees – Village Hall driveway: It was noted that ivy growing on the trees should be removed.

If anyone would like further information on any of the above items, please do not hesitate to contact the Clerk.

The next Parish Council meeting will be on Thursday, 8th May 2014 starting at 7.30pm in the Village Hall.

Future meeting dates:

12th June, 10th July, 14th August (if called), 11th September.

All are welcome to attend.

Karen King – Clerk to the Parish Council. Tel: 742358. Email:

karen.king@swaffham-prior.co.uk



Living in a Fog.

At the time of writing we have just had three days of most unpleasant atmospheric pollution. Going outside there was a smell in the air, a metallic taste in the mouth and a stinging in the eyes. The phrase 'Killer Smog' was being headlined in certain newspapers. It brought back memories for me of the 'pea-soup' fogs we used to have when I was a boy. I can remember on certain occasions going out with my friends after school, armed with torches, to the main road where we would tell the motorists crawling their way home exactly whereabouts they were, and if they were coming off into our streets, walking in front of them with the torches, showing them the way round the corners and setting them on the right road.

I also remember a time, living near the Thames in Grays, Essex in the early 1960s when we had a thick fog which never lifted for about five days. For all that time we could hardly see across the road, and everyone was crawling about as though half-blind. What a fantastic feeling it was to look out one morning and be able to see again!

At RE:NEW, in the period leading up to Easter, we were looking at some of the people encountered by Jesus in the Gospel of John. One of these was a beggar who had been blind from birth. Jesus took him to one side and did a very strange thing. He spit on the ground and made some mud which he smeared on the man's eyes. Then he told him to go and wash it off in a certain pool in Jerusalem. When he washed the mud from his eyes the man could see for the first time in his life. What must that have been like?

The Gospel uses this story to illustrate the fact that many people are spiritually blind – unable to see clearly the truth of God in the world around them. Jesus came to open the eyes of people like that, and he still does it today. John Newton, the 18th Century slave-trader turned hymn-writer, used the words of the blind man in his best known hymn, 'Amazing Grace': *'I once was lost but now am found, was blind but now I see.'*

Many people have found those words true in their lives today. If you are not one of them, why not take a look?

Peter Wells.

RE:NEW Services in May 2014.

4 May 10.30am – RE:NEW The Bigger Picture with Holy Communion
(Bottisham Primary School)

11 May 10.30am – RE:NEW Café style (at the School)

11 May 6.20pm – Traditional service. (Lode Chapel)

18 May 10.30am – RE:NEW The Bigger Picture (at the School)

25 May 10.30am – RE:NEW The Bigger Picture (at the School)

25 May 6.20pm – Traditional service with Holy Communion.
(Great Wilbraham Chapel)

For more information about any of the activities of RE:NEW please contact
Rev. Keith Morrison on C.813055 or Peter Wells on C.812388.

FREECYCLE



If you have any offers or wants, please contact me by the 14th of each month by phone (c813362), e-mail (jun.thompson@tiscali.co.uk) or drop a note through the letter box (23 Longmeadow). Please let me know if you would like anything repeating in subsequent issues. Everything is free and nothing is expected in return. Please can you contact the offers after the 1st of the month to make it a little fairer.

Offers

Evesham DVD1000 player (black) – in working order. Jun/Andy c813362

Wanted

Old suitcases to take charity donations to an HIV/Aids outreach project in South Africa. Janet [07833 960678](tel:07833960678)

Old-fashioned cider/beer bottles with internal coarse screw thread, and jam jars with non-screw tops. John c812120

Your old light fittings, brown Bakelite switches, iron conduit and switches, bulb holders and holders. Sheets and bits of bakelite. Postcard rack (carousel if possible). George 07895064727.

PASTORAL LETTER, May 2014

Bottisham Vicarage

Dear Friends,

I recently read a newspaper article proclaiming that this April was the most democratic month, ever. It went on to list the countries in the world holding elections for populations totalling 1 billion people. For some, this was a time of optimism as people felt part of the process to choose their future government; for others, April lived up to its billing as the cruellest month. We saw people taking enormous risk to exercise their democratic right to vote; we heard and saw voters who had been intimidated by those who knew that only a gun could force people to accept their view. And we heard about the massacre of innocent people in terrorist incidents designed to deter people from voting, but did not see the full, gruesome detail through our sanitised television screens.



In May, we will have our opportunity to vote in the European Elections. It should be a safer proposition for us; our biggest risk is crossing the road as we go to our local Polling Station. Yet by comparison with many countries where voting is such a dangerous activity, the turnout here is significantly lower. You have to dig a little on the internet to find information, but what I uncovered indicated that the turnout in

the East of England for the last European Elections was 37.7%. That means that almost two out of every three people eligible to vote, did not do so.

Some years ago, I heard a talk from a German Lutheran pastor who been interned in a concentration camp during the Second World War. He simply wanted to impress upon us the privilege of living in a free society where we have the opportunity to vote for the people who most closely represent our views. Nobody, he asserted, could better know how valuable was this right, than those who had lived under a tyrannical regime. He did not view democracy through rose tinted spectacles, even though the period when he spoke was one of much greater cross-party consensus than exists today. He recognised that it was difficult to find a party which fully represents our view but forcefully he told us that we must engage with the politics of our free society in a way he described as “critical solidarity”. By this he meant that we should engage to challenge policies with which we cannot agree but fundamentally we do so in solidarity with our fellow citizens within a free society, to maintain both that freedom and justice for our brothers and sisters. So this representative of the church was very clear about the Christian’s fundamental role in politics – our vote is our right and privilege and one we should thankfully exercise.

Sue Giles

Church Services in May at St Mary’s, Swaffham Prior unless otherwise indicated

Sunday 4 May, third Sunday of Easter
11am Matins

Sunday 11 May, fourth Sunday of Easter
11am Holy Communion (CWIT)

Sunday 18 May, fifth Sunday of Easter
11am Open Air Service for Rogation, Open Air Classroom, Primary
School Field

Sunday 25 May, Rogation Sunday
10am Benefice Service, Holy Communion, Holy Trinity, Bottisham

Thursday 29 May, Ascension Day
8pm Holy Communion, St Cyriac’s, Swaffham Prior, with Cambridge
Voices

Dates for Your Diary May 2014

Sat	3	LAND GIRLS MEMORIAL UNVEILING, 12 noon, Village Sign
Mon	5	REACH FAIR
Wed	7	Book Club, 8pm, Kent House
Thu	8	PC Meeting, 7.30pm, VH
Sat	17	Murder Mystery Evening, 7.30pm
Sun	18	Crier Copy Deadline
Mon	19	WI, 7.30pm, VH
Tue	20	Mobile Library, Cage Hill 2.45-3.15pm Chapel 3.20pm-4.00pm Village Gardeners, 8pm, VH Mothers' Union, 10-12noon, Lode Chapel
Sun	25	Open Gardens (see Letters, Page 2)
Wed	28	Annual Village Assembly, 7.30pm, VH
Thu	29	Ascension Dat, Cambridge Voices sing in St Cyria's Tower, 8pm
June	5	Bang gores the Swaffhams

Club	Contact	Tel.	Date	Time	Place
FOSPS	Clare	741316	2 nd Mon of	8pm	Village
Baby & Toddlers	Kelly Mead	741069	Fri	9:30-11:30am	Village Hall
Cubs	Tim Doe	743656	Weds (term)	6:00-7:30pm	Village School
Reading Group	Brenda Wilson	743937	1 st Weds of month	8:00pm	(See Crier)
Scouts	Tim Doe	743656	Weds (term)	6:15-7:45pm	Village School
Village Gardeners	Margaret Joyce	744390	3 rd Tues of month	8:00pm	Village Hall
WI	Pat Cook	742224	3 rd Mon of month	7.30 pm	Village Hall
Youth Club	Alan Badcock	742228	Tues	7-8:30pm	Youth Club Hut Hut
			Thurs	7-10:00pm	