



The Swaffham Crier

Volume XXXVII Number 5

May 2013



Editorial

With James seriously ill in hospital we have volunteered to help Caroline with this edition of the Crier. We are sure you would all want to join with us in sending our love and best wishes to James and the family at this difficult time.

It looks like spring has finally arrived and the village is looking very pretty with all the daffodils and blossom in bloom. Now we can come out of hibernation there are several events that need your support this month. The Village Feast on the 18th will interest both children and adults and the Village Assembly on the 22nd will keep us all informed of what happen here in our lovely village throughout the year.

So with our apologies for all errors and omissions, enjoy your May Crier and have a good month

Pat and Peter Cook

Cover Picture: *Love is in the Air* by Lorraine Izon

Regulars

| | |
|---------------------|----|
| Letters | 2 |
| Our Reporter | 4 |
| Crossword | 18 |
| Bottisham Patients | 15 |
| Mothers Union | 11 |
| School News | 16 |
| Anglesey Abbey News | 10 |
| Botanical Gardens | 25 |
| David Brown | 23 |
| PC Meeting | 26 |
| Renew | 28 |
| Freecycle | 29 |
| Sue Giles | 30 |
| Ophir | 31 |

News, Views & Reviews

| | |
|----------------------|----|
| Village Hall Plans | 14 |
| Mark Towriss Bursary | 12 |

What's On

| | |
|-------------------|----|
| Village Feast | 9 |
| Village Assembly | 3 |
| NGS open garden | 10 |
| Bottisham Players | 11 |



Letters to the Editors



Dear Editors

Mr L and Mr W

Mr Lewinsky really ought to use the correct terminology. We have an “uncontested” Parish Council and not an “unelected” one. Let us hope he puts this right at the next election by standing as a candidate.

His comments about Mr Woollard are altogether far too serious. Mr Woollard meant to be outrageous at the Wicken Fen meeting as illustrated by his piece for the *Crier*. He doesn't much care what people in the village think. In 1992 Mr Woollard (then our County Councillor) opposed the ECDC plan that confirmed Swaffham Prior's “in-fill only” status. Mr Woollard wanted us to become a “group settlement”, which would have offered opportunities to developers.

At a Parish Council meeting Meryl Moore, a member of the PC, asked why Mr Woollard had not told the PC that he was objecting to Swaffham Prior remaining “in-fill only”. His reply to Mrs Moore was expanded by him in the September 1992 issue of the *Crier*. In this he wrote that her question was **“irrelevant because I do not have to advise or consult with the Parish Council on any matter.”**

Thank goodness we now have David Brown as our County Councillor.

Alastair Everitt

Dear Editors

Our Land Army Girls

How astonishing and perhaps a trifle mean spirited of the Parish Council to reject Steve Kent-Phillips' suggestion that plaques be placed on the new Village Hall seats to commemorate the Land Girls.

The Land Army Girls were such an important part of the village, and the war effort. And after their work on the land they married some returning soldiers and remained in the village thereafter.

Is it possible the Parish Council members are just a little too young to be aware of this? Give Karen King (742358) or Steve Kent-Phillips (743883) a call if you have any views.

They would like to hear them.

Alastair Everitt

ANNUAL VILLAGE ASSEMBLY

Date: Wednesday, 22nd May 2013

Venue: Village Hall, High Street

Start time: 7.30pm.

This is the opportunity to catch up on what has been happening during the past year in the village! There will be plenty of opportunity to put your views and ask questions.

Sue Loaker, East Cambridgeshire Crime Reduction Officer, will be attending to give a presentation.

Our County and District Councillors will be reporting. There will be reports, displays and presentations from village groups and organisations.

If there is an item you would like to see on the agenda or you would like to give a report, please contact the Clerk.

EVERYONE WELCOME – SUPPORT YOUR VILLAGE!

BON MOT NUMBER THIRTY TWO

“It is much easier to be critical than to be correct.”

Disraeli

From our Reporter at the Parish Council Meeting

There is nothing terribly exciting to report this month. The Clerk was on form, not that she isn't normally of course, but it was nice to see her gently assertive. With the meeting barely underway, she asked for quiet - several conversations were going on at the back of the room making it difficult to record minutes. With everyone duly chastised, order and quiet was regained. Then lo and behold, District Councillor Allen Alderson struck up a conversation with County Councillor David Brown.



When he was invited to speak, Allen informed the meeting there is a feeling that Neighbourhood Panels are not so popular these days. This must be right as Geoffrey Woollard endorsed they are a waste of money, sorry, not a good use of resources. Allen has been tasked during the late summer, when everyone is on holiday, to review the panels, re-evaluate the purpose and delivery of them, then scrap them, sorry, implement any changes, in mid October. Neighbourhood Panels and the 'ShapeYourPlace' website are forums set up for community engagement where one can raise issues and learn about things in the local community. Surely we have something that does that already? Oh yes, parish councils.

Talking of the local community, there was some debate at the meeting on this year's Annual Village Assembly on Wednesday 22nd May. Having organised, sat through and minuted many a low attended Annual Village Assembly, the Clerk suggested an early start with refreshments to attract a better turnout. Oh goody, I thought, cup cakes, macaroons and a cup of tea. But oh no. Silence. Then one councillor sent his apologies in advance, another hoped he'll be tied up with birthday activities, one questioned the purpose of these annual meetings, someone else said no, better keep it as short as possible rather prolong the agony, another councillor said low attendance at such events was due to lack of publicity (which was fiercely contested by the Clerk) and Geoffrey confessed that he doesn't know how to 'guarantee excitement'. Sandra Ginn, on the other hand, suggested promoting village clubs by inviting them to tell us what they are all about. She thought this be would be especially nice for new residents. But in spite of her very good pitch, she was outvoted. What a shame. However Sue Loaker, Crime

Reduction Officer, will be a guest speaker which is timely in view of the recent local burglaries. Legally the Parish Council has to organise an Annual Village Assembly and it is meant to be a social event for you, the electorate. Parish councillors are volunteers who give up their time on behalf of the village and try hard to do what is best for the village. So come and have your say, good or bad, and let them know what you think. Go on, show your support, it might be fun...well, okay it probably won't be but there's not much on television on Wednesdays anyway.

The cemetery continues to cause confusion and concern. Confusion for Steve Kent-Phillips as it now transpires there are two water meters in the cemetery. Could this explain the very high meter reading reported at last month's meeting? This will no doubt be revealed next month but meanwhile Steve has read the meter that he checked last time and it has used one unit. He didn't think one unit was significant but crikey that's one thousand litres, the equivalent of about thirteen full baths. When questioned the horses said "Neigh, ain't us" and the allotment holders said "It's not us either" so the mystery continues.

Then we heard that some rotter has felled a yew tree Andrew Camps planted near the allotment fence about 12 years ago, leaving nothing but a seven inch diameter chain-sawn base. Surely someone must know something about this. Poor Andrew, his topiary idea for the Millennium yew has been dashed.

There was quite a bit of talk at this month's meeting about various council procedural matters. Members discussed the merits of tinkering with payment limits in their Standing Orders and East Cambridgeshire District Council (ECDC) has revised the guidance for its Code of Conduct adopted last year. As there is no advice on which part of the guidance has been revised, members will just have to *Spot-the-Difference*.

I thought I was following the meeting quite well but then Steve provided a justification for why residents of Swaffham Prior have an 8% increase in their Parish Council portion of the council tax this year. Maybe it was his accent but I couldn't quite understand his reasoning. Looking at the Clerk, she didn't seem to either. No mention was made of the downwardly revised number of Band D

properties in the village thereby reducing the tax base or anything about the £700 funding the parish council will receive on top of the precept. There was much head shaking from both ends of the room and although Steve hadn't bowled these two maidens over with his calculator-tapping explanation, his fellow councillors all seemed satisfied. His explanation even got one of Geoffrey's endorsements. The puzzled Clerk asked Steve if she could have the official party line in writing so I shall have to wait to read the minutes to seek clarification or the translation. Granted, as Steve said, the increase only amounts to a few extra pence per week but for folk on fixed incomes, every little counts.

Eric Pickles will not be impressed. He's demanding parish councillors 'square' any rises with their electorate and if he has his way, parish councils will have to call a referendum when they exceed a 2% increase. He might even cap parish councils. I wonder if the Communities Secretary could be lured into attending the Annual Village Assembly to spice the meeting up? Probably not, with no doughnuts on the agenda.

When the floor was opened up to the public, the first question was from yours truly asking about a missing stile on the public footpath at the back of the school which was making it difficult getting over the fence into the field. "That's what the gate's for!" Peter Hart quipped, "Ha ha ha". How embarrassing. Fortunately the regular observers, M & D, had much smarter and more sensible questions and comments for the council to consider.

Like for example, are members interested in the litter bins not being emptied? I'm sure they are, as is the Clerk who has contacted Darren Hughes at ECDC about it many a time whilst wearing her two parish hats. So come on Allen, why aren't ECDC tackling their contractor Veolia about this persistent problem?

Don't forget, Annual Village Assembly 22nd May, 7.30pm. Bring your own refreshments! LG



St Cyriac's Church, Swaffham Prior
With the Churches Conservation Trust

Saturday 15th June 6.00 – 7.00pm

“Then and Now”

A talk by the colourful, the eccentric, the rebellious

Roy Tricker

One of the original field officers of the
Churches Conservation Trust

He will reveal the truth about those early days
and entertain with tales of unusual Vicars

Peter Aiers, TV personality, currently
works with the Trust and will talk about the Trust today

A SHOW NOT TO BE MISSED

Tickets £5 on the door

Refreshments available from 5.30pm when doors open



St Cyriac's Church, Swaffham Prior

With the Churches Conservation Trust

Midsummer Market

Saturday and Sunday 15th and 16th June 2013

11.00am - 5.00pm Entrance Free

Plants * Books * Bric a Brac

Teas * Tombola

Children's Art Competition

Furniture * Toys

Quality Pre-Loved Clothes

(any donations for stalls please call 01638 742974)

And Also

Saturday: 6.00pm - 7.00pm

"Then and Now"

A talk by Roy Tricker

(see separate notice for details)

Sunday: Handbell Ringing by the Cage Hill Clangers

Afternoon Tea to be accompanied by

Palm Court Music with

Caroline Matheson at the keyboard



The Village Feast at **The Village Hall** on **Saturday 18th May**

- ✿ Fun for the whole family
- ✿ Old favourites, plus new attractions
- ✿ Cream teas and ice cream

All offers of prizes, bottles or help to make this community event a rip-roaring success, gratefully received:

Contact Mike Carrington (01638 741659 / mcarrington@me.com)

More details of the attractions will be available on the Village Hall website:

<http://swaffhampriorvillagehall.co.uk>

News from Anglesey Abbey and Wicken Fen

The cold start to Spring has had a knock-on effect in the gardens with everything running around 3 weeks later than usual. At Wicken spring is gradually getting underway with bitterns booming, snipe drumming and the first cuckoo arriving back after its long migration flight from equatorial Africa on 15 April. In recent weeks there have been numerous sightings of cranes around the reserve and they now appear to have taken up residence on Sedge Fen.

Last year the Trust launched **50 Things to do before your 11^{3/4}**, as part of a major campaign to encourage children to get outdoors and reconnect with nature. Following lots of feedback from children and their families with revised the list for 2013 with 15 new activities. Why not come along to our **Wild Wicken 50 Things Weekend** on 4 & 5 May to get a copy of the new list and complete some of the activities.

Down at Anglesey Abbey we have a **Family Fun Wild Art Day** on Bank Holiday Monday 6 May. Get creative sculpting mud faces or try your hand at outdoor print making. Sessions run from 11am & 2pm. Participation is free but normal admission applies.

The spectacular Wicken **Dawn Chorus** reaches its peak in early May as birds sing to attract a mate and claim their territory. Those prepared for an early start (4.45am) on either Saturday 4th or Sunday 12th May, will be rewarded with one of nature's true spectacles. Tickets £12 (includes bacon roll/coffee).

For the May half-term at Wicken we have **Pond Dipping & Minibeast Hunts** on Tuesday 28th & Thursday 30th May (timed sessions from 10.30am £2.50) and a **Buzzy Bee Party** on Wednesday 29th (10.30 or 2pm £4.75). Tickets for all events are available from the NT Box Office on 0844 249 1895 or online by following the links from the Events Page on www.nationaltrust.org.uk/wicken-fen

Returning to Anglesey Abbey, we're holding a **Bird Bonanza** on Wednesday 29th (11-12 or 2-3), when our experts will help you identify garden and woodland birds and make nest boxes and bird feeders and **Pond Dipping** on Friday 31st May (11-12 or 1-2pm).

National Garden Scheme Open Garden

Sunday 19th May from 2 - 6pm Refreshments available
The Paddock
43 Lower End
Swaffham Prior



Mothers' Union

At our recent Mothers' Union meeting the Reverend Stephen Talbot gave us a most interesting and extremely amusing talk about his role as a police chaplain.

There are sixteen Police Chaplains who cover the Cambridge area and their role is to help and support Police officers in all aspects of their working and personal lives - should they feel the need to talk through their problems.

These may relate to the traumas and the extremely difficult situations that they have to face on a regular basis.

Our next meeting will be held on Thursday, 16th May when a representative from Cambridge Daily Bread Co-operative Ltd. will be talking to us. We meet every third Thursday in the month in Lode Chapel at 2.30 p.m. and, if you would like to join us, you would be most welcome.

Bottisham Playersproudly presents

Hoovering on the Edge

by Hilary Speirs

Thursday 16th, Friday 17th and Saturday 18th May
7.30pm in the main hall of Bottisham Village College.

Tickets are available from:

Bottisham Post office, Tina's of Burwell or Chris Clarke hairdressing

Box office is on 01223 811966, ticket price of £7.50 & £5.50 concessions.

Come and be entertained by the seven different female characters as the one male tutor attempts to keep the creative writing group together.

April Cook.

Star Curtains Fabric Sale May 11th

.....from 10-2pm at our factory in 2B Swan Lane Business Park, Exning. This is an annual event and we sell off our end of rolls and small pieces of fabric at £1-£5/m. It is an ideal opportunity for fans of sewing or crafting to stock up on fabric for their projects. We also have a few pairs of ex-display and seconds curtains at 75% off the RRP.



FAMILY MEDICINE IN KENYA February 2013

Picture: Ute and Catriona Towriss with Bursary Doctors Kibett and Ochieng.

When local people in Swaffham Bulbeck and beyond raised the money that founded the Mark Towriss Bursary Fund 4 years ago I was anxious. I didn't know the organisation or people responsible for the Kenyan Family Medicine (GP) training. Would your money be properly used? Would they give the doctors a fitting training? Would the doctors themselves be fit recipients? A visit to Kenya in February with my daughter Catriona answered all these questions. We visited the 3 Bursary scholars, Moi University Hospital Eldoret and a couple of rural hospitals. It became clear that this training fund is valuable, not only to the 3 recipients but to the many rural people they will serve, families who have had too little medical health support.

Kenyan Family Doctors are working hard to turn the face of medicine from the big city hospitals, to look outwards to the 80% of Kenyans who live in the countryside. They are slowly forging links with more remote communities, supporting the rural nurses and clinical officers (health professional educated to level just below doctor) in providing more health education. They are creating Comprehensive Care out-patient programmes to educate TB and HIV patients; teaching them the need for continuity of treatment even though they feel better; the need for reviews. But of course it all costs money. When a family's money runs out patients stop taking the medicine... In both hospitals that were superintended by Family Doctors they had also introduced palliative care clinics. The clinic I visited was conducted by a mature and gentle clinical officer who also visited patients and their families at home; conducted monthly gatherings for families to share stories and concerns. These are small beginnings – but precious innovations. Here is one Kenyan nurse's response to working with a Family Doctor:

A family physician: 'this person is able to go around the person, or even the family. He can tackle the child [illnesses] in that family. He can tackle the mother who has gynaecology issues. He can touch the father who has an issue even with marriage, because he has done psychology as well. Our family medicine Dr has done even

psychology, so he can go around the family issues. He can give a health talk...[He] will go to maternity and deliver the baby as well, do maternal issues which is complicated and he can come out well.'

[Voort et al, BMC Family Practice 2012 <http://www.biomedcentral.com/1471-2296/13/12>]

Dr Tembu, the first bursary scholar, works in Kangundo rural hospital, 90 minutes east of Nairobi. His training has given him enthusiasm for preventative medicine and clinical teaching and he would eventually like to join the Faculty of Family Medicine teachers. March saw his final third year exams, the birth of his second child and the Kenyan elections – the instability and violence he personally experienced in 2007 made this an anxious time. Dr Kibett and Dr Ochieng, both second year Bursary Scholars, were away from their district hospital attending two months of lectures at Moi University Hospital where we met. Both are rural Kenyans and feel a sense of responsibility towards their communities. Their thoughtful lecturer Dr Chege spoke of the financial sacrifices this will mean for them – private city practice brings commands a higher salary and greater social status - and rural schools are inadequate for children of well-educated doctors. Equally, in his long experience of serving rural communities as a family doctor, there are other less tangible rewards. As Catriona and I sat with Drs Kibett and Ochieng sharing a meal, talking about medicine and teenagers I was struck by their brave commitment to this pioneering work. The Family Doctors I spoke to were clearly dedicated to furthering their cause. Dr Thigiti was one of the first three Family Medicine graduates, now working with the Ministry of Health on the long-term Kenya health vision: each district hospital will have satellite health centres manned by nurses and clinical officers who will work as a team under the leadership of a family doctor. These doctors are powerful pioneers and advocates for the poor, working persistently to change entrenched political and medical attitudes in order to bring healthcare to the millions beyond the towns and cities reaches. In 2005 Moi Hospital was the only Family Medicine training centre. Now the Aga Khan Hospital, Nairobi offers family medicine training and the Nairobi Hospital will join in the future, with a faith-based university Kabarak, close behind. While the government is supportive, Family Medicine is still largely unknown to Kenyan medical students, nurses and indeed trained doctors. No Kenyan I spoke to outside the family medicine circle knew what a family doctor was. There is still a long road to travel and they need our support. The bursary scholars Drs Tembu, Kibett and Ochieng say a big THANK YOU to all who have made this bursary possible and enabled them to undertake this training.

We will be taking on a new Family Doctor Bursary Scholar later this year. For this we need to raise another £12,000 for 2013. We have raised almost £3,000 already to support Kenya's goal: Kenya's goal: 100 Family Doctors to be trained by 2018. By January 2013 first 15 graduates of MMed Family Medicine Kenya. Now 20 family doctor registrars training in Moi University and Aga Khan University. That is 35 doctors already. 65 more Family Doctors to go. Kenya can do it – with your help!

Ute Towriss (ute.towriss@btinternet.com) For further information and to make a donation: <http://www.marktowrissbursary.com/>

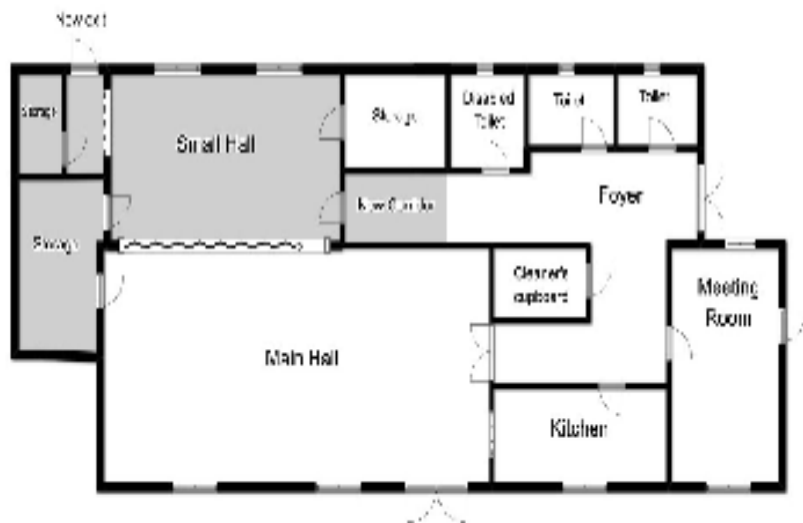
Even More Village Development Plans

The Village Hall

These proposals are unlikely to generate as much interest and excitement as some of the recent plans for the development of the Village and surrounding area. However, the Village Hall Management Committee is keen to find out what residents think about the future of the Village Hall.

We are considering making extensive modifications to the layout of the Hall in order to make it easier for users who have booked the Small Hall to get easy access to the toilets and kitchen when the Main Hall is also in use.

Currently the only access to these facilities for users of the Small Hall is by going outside and round the back of the Hall, and this, unsurprisingly, has discouraged a lot of people from booking the Small Hall.



We would like to create a passageway directly through from the Small Hall into the foyer.

This would, unfortunately, remove a large proportion of the storage space, and so we plan to add more storage at the end of the Hall for the tables and chairs. This should give storage that will be accessible from both Small and Main Halls, meaning less disruption for users.

We would really like to hear comments from Swaffham Prior residents, not only about this development plan, but also about other ways in which you think we could improve the Hall and the service it provides. If you would like to make a comment or suggestion, please email or write to Mike Carrington (mcarrington@me.com or 2 Heath Road, Swaffham Prior, CB25 0LA).

News from Bottisham Patients' Group

By the time you read this we will have held our Annual General Meeting and the new committee will have more ideas for its work in the coming year. Details will be in the June village magazines; you can read the minutes for the 2012 AGM on the Practice website at: www.bottishammedicalpractice.nhs.uk/ppg.aspx and those for 2013 will be posted there soon.

The bad mad March weather brought more patients than usual for the time of year to the surgery and the doctors worked extra sessions to cope with the demand. We hope this was a seasonal blip and that the Practice has become less busy as we benefit from better spring weather. There were no walks in April but the Walking Group will resume in May so look out for the dates on the surgery notice board and on the website.

The new arrangements for General Practices to commission NHS services for its patients have been in operation since 1st April. We should notice little difference in our part of England as this system has been operating for the last three years in Cambridgeshire. Bottisham Medical Practice is one of nine in the Local Commissioning Group (LCG) called Cam Health, which is itself one of eight LCGs in the Cambridgeshire and Peterborough Clinical Commissioning Group (CCG). The Primary Care Trust (PCT) no longer exists, so we must get used to new acronyms appearing in information about primary care in the NHS. If you want to find out more about NHS provision locally go to www.cambridgeshireandpeterboroughccg.nhs.uk/home.htm.

Practice phone number

It has come to our notice that a local household with a similar phone number to the Practice's is getting up to ten calls a day asking for an appointment. They are not happy! When contacting the Practice by phone please be sure to dial **810030**.

Bottisham Patients' Group Committee

School News



Mercury Class assembly took place on Tuesday 19th March and we were treated to songs, number rhymes, beautiful artwork and a PowerPoint presentation which showed examples of models made and research undertaken about castles.



Performing in Mercury Class Assembly

They have found out how a drawbridge works and what arrow slits and crenulations are for. The children confidently participated and all of their voices were heard loudly and clearly. A thoroughly enjoyable event! The FoSPS Easter Bingo was yet again very exciting and an amazing **£173.20** was raised! It is always looked forward to by the children, from reception to Year 6, and as the collection of eggs being collected increased, the anticipation grew. Many

thanks to all who organised the event and special thanks to the new edition to the team, the Easter Bunny! Much chocolate was consumed and it was a very enjoyable, albeit noisy event for all!

The Circle Schools Spring Concert took place on Monday 25th March. It was fantastic! Eleven primary schools and Bottisham Village College performed a range of songs and other musical items, including Boomwhackers, recorders, a rock band, a Jazz band and an orchestra. In total, around 230 children/young people participated. Mrs Holt ex-



pertly conducted the joint 'The carnival of Animals' choir and we heard renditions of 'Sailing', 'Engine, Engine' and 'The Long and Winding Road' amongst others. Congratulations go to Swaffham Prior Choir for a successful sing and to Mrs Holt and Mrs Chalmers for their role in organising the concert.



Reverend Sue washing feet

Reverend Sue led our Easter celebration at St Mary's on the last day of term. Throughout the service, we had contributions from each class, including a selection of songs and poems. Two children from school volunteered to have their feet washed by Reverend Sue which she did to remind us of the time that Jesus washed the feet of the disciples and that we should treat everyone as an equal.

We started the summer term with lots of excitement. As part of their new topic, 'Castles', Neptune and Saturn classes walked to Devil's Dyke with shields and swords and re-enacted The Battle of Hastings. Neptune Class represented the Normans and Saturn Class became the Saxons and they learnt about the different techniques and strategies used during the battle.



'The carnival of Animals'

Mars Class and Mercury Class have begun a topic based on 'The Carnival of Animals'. The children in both classes designed and made colourful animal masks. They then wore them and took part in a parade held in the school hall in front of the rest of the school. We saw pandas, lions, turtles, giraffes, parrots and monkeys amongst others. It was a great way to finish our first week back to school!



The 'Normans'



The 'Saxons'



In Battle

Hannah Curtis
Head teacher

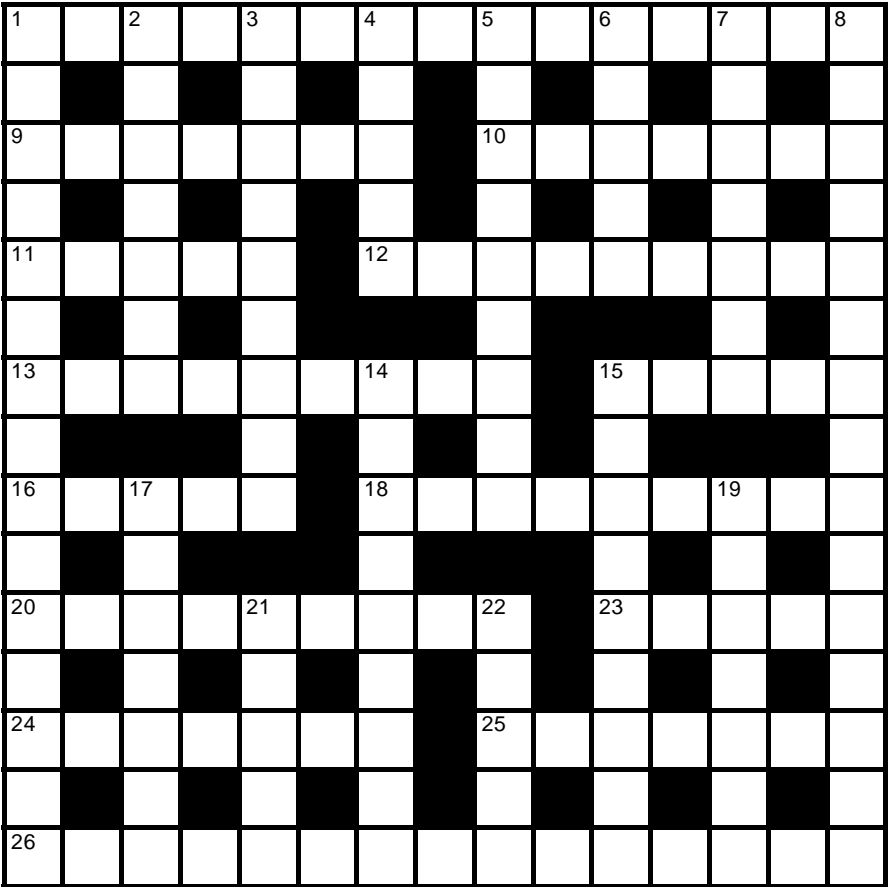
Crossword Number 100

Compiled by

Sponsored by **The Red Lion**

NIBOR

This month's puzzle is a simple cryptic crossword. Send your answers to the editors by 18 May 2013. The first correct solution out of the hat will win a free meal for two at the Red Lion—See the Manager at the pub for full details.



| |
|----------------|
| Name:..... |
| Address:..... |
|Tel:..... |

Across

- 1 Exchange of letters about narration titles mix-up (15)
- 9 Normally, start a session under supervision until after lunch (2,5)
- 10 Great at spoiling boat races (7)
- 11 Sounds like Dee and Andy sound (5)
- 12 Goat or lamb maybe provide celebrity autographs (4,5)
- 13 Strange thing to sell? It's a bullbat (9)
- 15 Express doubt about brushing out bin (5)
- 16 Wood in braced arch (5)
- 18 Attire for British journalist and French sailor first (3,6)
- 20 The final burden is W (4,5)
- 23 Avarice included in meagre edition (5)
- 24 Titles I made up favouring the nobility (7)
- 25 French gas she found for an antelope (7)
- 26 Indications of union proposals using battle phones (10,5)

Down

- 1 Educational institution (for British Rail employees?) (8,7)
- 2 Funny, it's a reflection (7)
- 3 Rain hat uses tower construction (9)
- 4 Article taken from passageways may be British (5)
- 5 Set aside scratched organ (9)
- 6 Support for age is confusing (5)
- 7 Number get back in before the Queen (7)

- 8 Myopia may hide strangeness, strangely (15)
- 14 Elk escapes from agitated troublemaker into tree garden (9)
- 15 Astronomer finds tropical fish (9)
- 17 Remains in the ring looking dapper (7)
- 19 At first, keen Russian envoys may lunch in nearby Moscow stronghold (7)
- 21 Drink chant about mid-Wales... (5)
- 22 ...But no drink when you're on this vehicle (5)

Solution to crossword no. 99

| | | | | | | | | | | | | | | |
|---|---|---|---|---|---|---|---|---|---|---|---|---|---|---|
| | J | O | H | A | N | N | E | S | B | R | A | H | M | S |
| C | I | O | | U | C | E | A | P | | | | | | |
| O | G | L | E | R | | T | O | U | C | H | T | Y | P | E |
| R | F | T | R | | B | E | D | C | | | | | | |
| O | R | I | G | A | M | I | | A | G | A | I | N | S | T |
| N | | E | | | T | | | | R | | | | | R |
| A | D | L | I | B | | I | N | V | I | S | I | B | L | E |
| | | D | A | | O | E | | A | R | | | | | |
| F | A | S | H | I | O | N | E | R | | L | I | E | I | N |
| I | | | | L | | | | M | | | A | | I | |
| E | D | D | Y | I | N | G | | O | I | L | S | K | I | N |
| R | | E | | W | | R | | N | | I | | I | | E |
| C | O | N | T | I | N | E | N | T | | B | I | N | I | T |
| E | | I | | C | | E | | E | | R | | T | | Y |
| R | I | M | S | K | Y | K | O | R | S | A | K | O | V | |

We congratulate Shirley Wilkins, the winner of last month's competition, who should collect her prize certificate from the editors. Honourable mentions go to Robert Nunn, Tansy Budd, K Richards & Trish Whitehead.

WI Notes

The April meeting was a great success when Barrie Stevenson hosted an 'Antiques Road Show' with items brought along by members. Barrie is an excellent speaker and his enthusiasm for the event held everyone's interest throughout the evening. Given that he had not had any opportunity to view the goods before he started it was quite remarkable how much information he was able to give on each piece. As an extra treat we learnt a lot about the social history and the way our little treasures would have been collected and used, and not always what we expected!

At our next meeting on May 20th we will first be discussing the resolution that will be voted on at the NFWI AGM which this year takes place in Cardiff in June. This years resolution concerns the decline of our high streets and town centres. At the national level the WI can bring influence to bear on policy making and through the public affairs department will offer institutes advice on how to become involved in local campaigning.

The speaker will be Leonard Priestley with 'the story of a lorry driver and his van' New members and occasional visitors are always welcome. Regular meetings are on the third Monday of the month in Swaffham Prior Village Hall at 7:30 so come along and see if you would like to join our friendly group.

Pat Cook - President

VILLAGE GARDENERS



We had a highly entertaining talk this month from Lucy Redmon, entitled-"From Wisley to Rushbrooke-a walk around a plants woman's garden." Rushbrook being her garden near Bury St Edmunds, which can be visited every Friday along with other gardens in the area-Gardeners 'Friday.

She said that horticulture had been in her blood-her mother being a very keen gardener and had been to Hadleigh High School where rural studies, including gardening was on the curriculum. She loved this and after leaving school became the youngest student-19years old-that Wisley had ever had. Later she gained further experience at chateaux in France, as a florist in London and then setting up her own garden design business, having done a garden design course at Chelsea Physic Garden. But" London was a struggle-getting your lawn mower through people's houses"-so she returned to her native Suffolk and started lecturing at Otley college near Wicken Market.

She now lives with her husband and two children at Rushbrook, which has a beautiful thatched cottage and a B & B. From here she runs her garden design business , but on her own admission, is first and foremost a plants woman.

Her two most admired plants- people being Roy Lancaster and her heroine-Beth Chatto, who she said had sat in her garden (hallowed turf) and whom she had interviewed and met several times. She quoted Beth Chatto as saying "we all have our canvas to paint" and Lucy has created a garden in which some interesting features have been incorporated and are now part of what she called "her pipsqueak pad"!

She brought with her a large basket full of bits of her plants, that she felt were really a must for her-most of which were highly scented-Lonissera FrAGRantis-sima, Osmanthus, Ribes Sanguineum, Daphne-Jacqueline Posthill, Viburnum Mowhawk and Azara microphylla-to name but a few.

Along with this collection she brought some lovely photos of Rushbrook, several dozen eggs-of varying hues, from her free range hens and quite a few plant books. Not many gardeners would admit to spraying the faded heads of Allium Sphaerocephon, to contrast with her delicate grass collection, but it seemed just right for this very , whacky, wildly enthusiastic gardener. We are going to Rushbrook in July and are so looking forward to seeing the real thing.

Our next meeting is on May 21st when George Thorpe will be talking about Perennials. Everyone welcome.

Contact Roger Connan on Tel: 012230233009 or Peter Hart Tel: 01638 741681 if you would like to join the Village Gardeners Outing to The Old Vicarage Garden East Runton - Saturday June 22nd

Our new Vicar

Our new vicar, Sue Giles, has been in post now for 6 months, and those of you who have not met her yet, don't know what they're missing. She's a small, quiet person, whom you could pass in the street without noticing, but she makes an impact on everyone she meets. She touches people in a very personal way: she's genuinely interested in those she meets and makes them come alive and animated in a way that others have missed. I've seen people almost transformed when talking with her. And she is absolutely convinced of her faith in a loving and generous God who makes a difference in the lives of His people: a God who reaches out to us all, no matter who we are.

She wants people to understand what Christianity is about and to grow in faith, so when she takes a service, she explains what's happening. Her sermons don't send you to sleep: they're both thoughtful and thought provoking, relevant, easily understood, but always challenging.

Come and meet her. If you've not been to church for some time, come to a Family Service, on the third Sunday of the month at 11 o'clock. It's a much busier service, more informal, with many young children and you'll be made very welcome.

Brenda Wilson

County Council Report April 2013

In the run-up to the County Council elections on 2nd May, April has been relatively quiet at the County Council as purdah rules have applied from the beginning of April, meaning that many ordinary meetings will be taking place after the election.

Cabinet met to consider a number of urgent issues. Cabinet agreed an interim highways works maintenance programme for the next 6 months, whilst a new scoring system is being introduced to allow local members more say in prioritising work in local areas. Cabinet also agreed governance arrangements for the roll-out of superfast broadband across the County and an expansion of the Roundhouse Primary School in St Neots.

I also chaired a meeting of the Children's Trust, with the main focus of the meeting addressing provision of mental health services for children and young people across Cambridgeshire.

At the time of writing the election is 3 days away. I hope that this will not be my final monthly report to the Parish Council. If it is I would just like to say how privileged I have found it being our County Councillor.

David Brown

Lode Village Fete

Saturday 8th June 2013

In the Passage from 11am. Official opening 12 noon. Prizes at 4pm

Refreshments,
side shows
live music,
entertainments
competitions.
Disco in the evening.

CAMBRIDGE UNIVERSITY BOTANIC GARDENS

The darling buds of MayAfter one of the coldest springs for decades, never has the phrase ‘ne’er cast a clout ‘til May be out’ been more apposite, even when pulling apart the adage reveals ambivalent meanings. ‘Clout’ is an Old English word variously meaning a clot of earth or clothing. Thus it can be taken as advice not to work the earth until it has warmed by the end of May, but also as a warning not to put away winter clothing too soon. Either would seem to work well this year! The double meanings extend also to May – does it simply refer to the month, or could it be urging us to wait for the queen of the may or may blossom of the hawthorn, to be ‘out’ and in full bloom before daring to hope that summer is on the way?

‘Haw’ is derived from ‘hage’, an Old English word for hedge, and the abundant hawthorn and its wealth of poetical and proverbial references occupies a central place country lore. Since the Middle Ages, the end of winter has been celebrated by the crowning of the May Queen with may blossom and dancing in a weave to decorate a maypole with ribbons. The song, *Here we go gathering nuts in May*, in fact refers to ‘knots’ or posies of may blossom. Yet it has always been unlucky to bring may blossom into the house, quite probably because the flowers give off a slightly curdled fragrance due to the presence of trimethylamine, a chemical also formed when body tissue starts to decay.

Spring blossoms are cause for celebration all over the world, perhaps most famously through the *hanami* or ‘flower viewing’ festivals in Japan, during which thousands gather to admire the beauty of the cherry tree blossoms and feast underneath them. During the short season of just a week or two, the Japanese meteorological office issues a ‘blossom forecast’ to help in *hanami* planning.

Both cherry and hawthorn belong to the Rose family, along with many other spring favourites such as rowan, apple, pear and almond. If we are lucky with our blossom forecasts, many will be in bloom for our own flower celebration, a Festival of Plants, on 18 May. During this day dedicated to bringing plants into focus, there’ll be drop-in ask the gardener sessions, pop-up plant science, fantasy flowers and the Fairyland Trust for younger visitors, independent local nurseries offering choice plants for sale, tours, meet the experts and ‘grow your own’ giveaways. So whether it’s getting advice on which plant goes where, discovering the inner workings of flowers, a bit of garden retail therapy or simply having a fun day out with the family, there’ll be something for everyone at our celebratory Festival of Plants.

The Botanic Garden is open 10am – 6pm April - September. Admission is £4.50, Giftaid admission £4.95 or join the Friends, get free admission and help the Garden grow! For news and events, detailed information about the Garden or to discover this week’s Plant Picks from the Head of Horticulture, please visit the website at www.botanic.cam.ac.uk



Break-ins/thefts

There has been an increase in thefts from properties during the last month, particularly in the Reach area. The police advise everyone to ensure that their house and outbuildings are locked and secure. Any suspicious activity should be reported to the police, together with any vehicle details and registration numbers.

Waste collection in East Cambs

This year the waste and recycling collections will be on Thursdays as normal in the Swaffhams ward. In the past, collection day has been one day later, that will not be the case this time.

Neighbourhood Panels

There are four panels in the district. Our ward is part of the South Area Neighbourhood Panel. They enable representatives from Parish Councils to meet with County and District Councillors together with partner agencies such as the police, fire service, social services and Sanctuary Housing to discuss issues of concern.

For some time there has been a feeling that we need to improve the way that they function. I have been asked to sit on a working party to review the panels.

The aim of the review will be to:

- Assess whether Neighbourhood Panels provide an effective means for agencies to engage face to face with residents and communities and to decide whether all or some of the panels should continue as they are.

- Develop a revised model for Neighbourhood Panels and agree resourcing of their model by partner organisations.

- In looking at the Panels we will also look at other engagement tools that could replace or add value to the panels. We will be carrying out our work between July and October. Then agree a final model for implementation and its resourcing in mid-October. A draft improvement plan will then be presented to our Scrutiny Committee in November and to the Community and Environment Committee in January 2014.

Our Local Shop

Smaller convenience shops find it ever hard to compete with the major supermarkets. We are lucky to have the County Store and post office at Swaffham Bulbeck. It is very well run by Camile and Baal, providing a very valuable local service, always with a smiling face.

The more we can shop there the more successful it will be.

As I have said in the past, it is a case of "USE IT OR LOSE IT". **Allen Alderson**



County Council Report 22nd March 2013**Regional Lead Members**

I chaired a meeting of Lead Members across the Eastern Region in early March. We took the opportunity to make a presentation on some of the challenges and opportunities facing Cambridgeshire. We also had a presentation from Essex CC regarding their work on the Troubled Families initiative.

Local Safeguarding Children Board

The Local Safeguarding Children Board is a partnership body, made up of all those who have an interest in safeguarding children in the County, with an independent Chairman. The LSCB plays a key role in identifying issues, delivering training and investigating individual cases. The meeting in March considered a number of issues including outcomes for Looked After Children, guidance and training to deal with child sexual exploitation, and consideration of a draft report into a serious case review following the untimely death of a child.

Looked after Children

We currently have 483 children looked after by the Council.

In a further push to recruit foster carers and prospective adoptive parents I was interviewed by BBC Look East to get the message across that Cambridgeshire County Council does not discriminate in who we accept for these positions, provided they are right for the child or young person considered and can offer that child or young person a positive upbringing.

Overview and Scrutiny

O&S met to consider a wide range of issues. These included implementation of our Placement Strategy for Looked after Children, consider of a commissioning strategy for new area Special Schools to cope with demand, progress with the Child Poverty Strategy, Cambridgeshire Music, and an update on progress with our Improvement Plan and implementation of the Social Work Unit Model.

Police and Crime Commissioner

A meeting has been held with Sir Graham Bright (PCC) to discuss the preventative work undertaken by our Youth Offending Service (YOS). The budget for this work transferred to the PCC and Sir Graham has recognised the value of the work and agreed to continue funding this part of YOS for the coming year.

Other Meetings

I attended a meeting of the Joint CCC/ECDC Member Group considering plans for 3,500 houses in North Ely. Cabinet met and considered a Flood Risk Management Strategy amongst other items. I had a full Council meeting on 26 March where we debated motions supporting the upgrade of the A14 and a motion calling for a proportion of meetings to be held in the evening. I also attended both consultation events for the Burwell village vision and an In Your Patch meeting at Ely.

David Brown

Notes from Parish Council Meeting – 11th April 2013

The meeting was chaired by John Covill with 7 Parish Councillors and 3 members of the Public in attendance.

Members' Declaration of Interest for Items on the Agenda + Requests for Dispensations:

None.

Public Participation:

No comments.

Reports:

CCC—Cllr David Brown reported to the meeting. *There followed discussion on the condition of the roads and allocation of CCC funding to repair these.*

ECDC—Cllr Allen Alderson reported to the meeting. *There followed discussion on the review of the Neighbourhood Panel Meetings.*

Matters Arising from Previous Minutes (for information only):

Charges for Cemetery/Allotment Water Supply: Due to the increase in Anglian Water charges, Steve Kent-Phillips reported that he had checked the meter readings and would continue to monitor.

Repairs to Pound gate: John Covill agreed with Simon King the type of wood to be used and asked him to go ahead with the work to replace the latching post to the gate.

Correspondence for Consideration/Circulation:

ECDC – *Changes to Recycling Banks:* Details of new contracts for paper banks and tins & cans banks in recycling sites throughout the district.

Contract for paper banks awarded to Palm Paper and contract for tins & cans banks awarded to AmeyCespa who currently provide the plastic bottle banks.

ECDC – *Parish Precept Increase for 2013/14:* Clarification of the reasons for the increase in the 2013/14 Parish Precepts as shown on the Council Tax Bills recently sent out by the District Council.

ECDC – *Code of Conduct Guide for 2013:* Noted.

ECDC – *Approval for tree works at 14 Lower End & 42 High Street.* Noted.

Date & Agenda for Annual Village Assembly:

Following discussion it was agreed to keep the same format as in previous years. The Clerk suggested the serving of refreshments at the beginning of the meeting but it was agreed that this was not necessary. *Please see separate note in Crier giving details of date, time, etc.*

Installation of New Village Seats – estimate received:

An estimate provided by Simon King to remove old seats and install new ones at the front of the Village Hall was agreed.

Following the above item, it was agreed that the Parish Council Standing Orders/Financial Regulations should be amended to authorise the Clerk to spend up to £200 without prior authorisation provided permission was

granted by both the Chairman and Vice-Chairman and the expenditure was ratified at the next meeting.

Accounts for Payment: These were agreed.

Related items:

Clerk confirmed the receipt of the Annual Return from the External Auditors and that the necessary notices would be displayed as required.

Steve Kent-Phillips informed the meeting that the year-end payroll had been completed and as required by HMRC future payroll entries would be recorded electronically through the RTI system.

Clerk's Reports:

No additional items.

Parish Councillor's Reports:

Caddenham Lane: Paul Latchford expressed concern about gate across the lane being left unlocked explaining that this had been installed to deter fly-tipping.

Cemetery: Andrew Camps reported to the meeting that a Yew tree had been cut down in the cemetery and asked if anyone knew who had done this. Andrew also suggested that now there was a separate water supply for the allotments, the fence 'opening' between the cemetery and allotments should be locked.

Open Question Time:

Sharyn Robinson told the meeting of a broken stile on the footpath to the rear of the School. *Peter Hart advised on the footpath route and access gate.*

Michael Limb raised the problem of the litter bins not being emptied by Veolia and asked that additional attention was given to this. There followed discussion on the routine of the collections. The Clerk to write to ECDC.

If anyone would like further information on any of the above items, please do not hesitate to contact the Clerk.

The next Parish Council meeting will be on Thursday, 9th May 2013 (Annual Parish Council Meeting), starting at 7.30pm in the Village Hall.

Future meeting dates:

13th June

11th July

8th August (*if called*)

12th September

All are welcome to attend.

Karen King – Clerk to the Parish Council. Tel: 742358. NEW EMAIL ADDRESS: karen.king@swaffham-prior.co.uk



I've Got the Power!

During March we saw two new men take on key roles of leadership within the worldwide church. As a Baptist I answer to neither Archbishop Justin Welby nor Pope Francis, but it was with hope and joy that I witnessed their first public appearances in these roles. Whatever people may say about the institutions they represent, both men seem genuinely humble, aware of the weakness of their own humanity and willing to serve others.

On Sunday 19th May many Christians will celebrate the festival of Pentecost. It reminds us of the occasion when – 50 days after Easter, and just over a week after Jesus' ascension into heaven – the Holy Spirit descends upon the disciples gathered in an upper room in Jerusalem. Some people struggle to believe such events actually happened, but what cannot be denied is that something powerful happened to this small and insignificant band of people to help them spread their message of hope around the world.

Peter, who had personally betrayed his friend in order to save his own skin, is somehow given the confidence to preach publicly and to identify himself with a movement that challenged both the political and religious institutions of his time. He was a man who knew his own fallibility, and yet in his weakness he was able to trust the risen Christ to help him fulfil the purpose God had for him, a destiny that would ultimately cost him his life.

The power that transformed Peter – and has changed the lives of believers ever since – is available to all who are willing to ask for it. Maybe you're someone who feels powerless in one way or another: I want to invite you to ask God to fill you with his life-changing power this Pentecost. Possibly you're someone who holds a position of power in the workplace or within the community: I'd like to encourage you to be humble enough to ask for God's strength to fulfil that role with integrity and honesty.

And while you're praying perhaps I could ask you to say one for me – I need all the help I can get!

Simon Goddard

Services in May

Sun 5th May, 10.30am – RE:NEW The Bigger Picture (School)

Sun 12th May, 10.30am – RE:NEW Café & Kids Club (School)

Sun 12th May, 6.20pm – Traditional Service (Lode Chapel)

Sun 19th May, 10.30am – RE:NEW The Bigger Picture (School)

Sun 19th May, 5.30pm – Contemplative Service (Lode Chapel)

Sun 26th May, 10.30am – RE:NEW The Bigger Picture (School)

Sun 26th May, 6.20pm – Traditional Service (Great Wilbraham Chapel)

For more information please contact: Rev. Simon Goddard.

Tel: (01223) 812881

Email: simon.goddard@re-new.me.uk

Web: www.re-new.me.uk

Twitter: @renewchurch

FREECYCLE



If you have any offers or wants, please contact me on jun.thompson@tiscali.co.uk, phone on 01223 813362, or drop a note through 23 Longmeadow. Everything is free and nothing is expected in return.

If you have any offers or wants, please contact me by the 14th of each month: jun.thompson@tiscali.co.uk, or c813362, or drop a note through 23 Longmeadow. Everything is free and nothing is expected in return. Please can you contact the offers after the 1st of the month to make it a little fairer.

Offers

Single folding bed with mattress. Sally c812402

Small pedal go cart, would suit 4-6 year old. Helen c813962

There are a few remaining videos left: well known classic military films, sports videos about cricket and bowls, one about interesting trains, one about crime and a few classic children's videos. Lis c811233.

12 melamine topped hexagonal folding tables. Currently being used as dinner tables etc in the school hall at Swaffham Bulbeck Church of England Primary School but shortly to be replaced. In good condition and could be viewed in school. Can be freecycled singly or in groups. School office 811595

Wanted:Your old light fittings, brown Bakelite switches, iron conduit and switches, bulb holders and holders. Sheets and bits of bakelite. Postcard rack (carousel if possible). George 07895064727. Electric Black and Decker chain saw, any condition. Sid C 811690

Dear Friends,

The last couple of months have seen news of two ecclesiastical appointments featuring on national news bulletins and not just in the religious media. What's more, the coverage has been overwhelmingly positive – not something the churches have been used to recently!



The question is, how long will it last? There is now so much airtime and other media devoted to news, that there are times when it seems only possible to fill it with controversy generated by journalists themselves. So once the initial euphoria has passed, once we have satisfied our curiosity about the biography of the new leader, there is an instant move to pin down their views on any topics which happen to be controversial at the present time. At one level, this is understandable and right – we want to know what our leaders stand for and, by extension where we stand in relation to them. But whoever takes on the role of journalism has a heavy responsibility to represent accurately the truth as they find it. Too often this does not happen – we hear only part of the truth and the incompleteness of what we hear can fatally compromise its accuracy.

I have been struck by the alacrity with which journalists have wanted to tell us where our new Archbishop stands on such issues as relationships between gay people and the ordination of women as bishops. What comes out much more rarely is the overall context within which those views are expressed. Earlier in his ministry, Justin Welby was the Director of the International Centre for Reconciliation at Coventry Cathedral.

I have heard him speak movingly of his direct involvement in trying to reduce the bloodshed arising from the clashes between Christians and Muslims in Nigeria. This was no easy task, and his life, as well as that of those with whom he was working, was at risk in living this ministry. The hard truth is that simply bringing people together is not enough; there are some issues over which people's views simply cannot be reconciled as each believes in all sincerity that the other is wrong. But if issues cannot be reconciled, people may be.

The hardest part of the Gospel message is: "Love your enemies". That means being prepared to listen and in so doing recognise our common humanity – that is very different from a liberal approach which suggests our views can be reconciled. We are asked to make a genuine response to the call of the gospel.

God holds all people in his reconciling love and he challenges us to reflect that by caring for people whose views and opinions we will never be able to accept.

Sue Giles

The Partner Carers' Prayer

Help me to know how I can cope;
When the pain's too much to bear.
Help me to know how to endure,
When I'm the nearest one to care.

I need to know how to survive
When my spirit's broken;
When words no longer signify,
And thoughts, cannot be spoken.

When speech and actions are bizarre;
Or perplexing anger flares;
When recognition disappears- - -
And I'm the one who cares.

Help me to know how I can deal
With - just another day;
And then the next one, after that, - -
But that's too far away.

Ophir

Swaffham Bulbeck Summer Theatre presents Gilbert and Sullivan's Ruddigore

Wednesday - Saturday 12th - 15th June 7.30pm
(matinee Saturday 2.30)

Downing Farm, Station Road, Swaffham Bulbeck.

Tickets available to purchase online from Ticket Source
Or from the village box office: Tel 01638 745490
or email kari.karolia@gmail.com

There is a licenced bar for drinks during the interval and afterwards
Car Parking on site with easy disabled access.

Dates for Your Diary May 2013

| | | |
|-----|------|--|
| Thu | 9th | PC meeting, 7.30, VH |
| Thu | 16th | Mothers Union, 2.30, Lode Chapel |
| Sat | 18th | Village Feast, 2pm, VH Crier Deadline |
| Sun | 19 | NGS open garden, 2pm, 43 Lower End |
| Mon | 20 | WI, 7.30, VH |
| Tue | 21 | Mobile Library, Cage Hill 2.45 - 3.15, Chapel 3.20 - 4pm Village Gardeners, 8pm, VH |
| Wed | 22 | Village Assembly, 7.30, VH |

Village Clubs & Societies

| Club | Contact | Tel. | Date | Time | Place |
|-------------------|----------------|--------|-------------------------------|--------------|-----------------------|
| FOSPS | Clare Freeman | 741316 | 2 nd Mon of Term | 8pm | Village School |
| Baby & Toddlers | Kelly Mead | 741069 | Fri | 9:30-11:30am | Village Hall |
| Cubs | Tim Doe | 743656 | Weds (term) | 6:00-7:30pm | Village School |
| Reading Group | Brenda Wilson | 743937 | 1 st Weds of month | 8:00pm | (See Crier) |
| Scouts | Tim Doe | 743656 | Weds (term) | 6:15-7:45pm | Village School |
| Village Gardeners | Margaret Joyce | 744390 | 3 rd Tues of month | 8:00pm | Village Hall |
| WI | Pat Cook | 742224 | 3 rd Mon of month | 7.30 pm | Village Hall |
| Youth Club | Alan Badcock | 742228 | Tues | 7-8:30pm | Youth Club Hut Hut |
| | | | Thurs | 7-10:00pm | |