



The Swaffham Crier

Volume XXXVII Number 3

March 2013



Editorial

Lots to read in this month's *Crier*, where there are several *visionary* things happening in the near and far future which will affect our

village. Starting with the near: *Wheelie Bins*: ah yes, a vision of delight (see Paul Latchford's picture) and where we are all going to put them (other than Paul's very sensible suggestion — in the road) I do not know. Garden centres will be doing very well in decorative disguises — reader's suggestions very welcome!

Next Vision to come, the Swaffham Prior one, the proposed new housing and industrial estate. To anyone who missed the VH consultation, we have until the 25th of March to put points of view and raise objections.

Lastly, and quite far in the future, that famous *Wicken* Vision. Our representative did not get on very well at the meeting, and gives

an all too familiar account of what is usually meant by consulting and liaising these days: as in *neither*. But we do surely need to be represented? Another volunteer? Or Geoffrey to have another go?

Congratulations to the Red Lion Quiz team who've just raised £1000 for Red2Green, and especially to Master -minding Quiz Supremo Graham Wiltshire, who's stepping down this month. Many thanks to Sylvia Thompson for her tribute to him in this edition.

Meanwhile Jorgio Montiero has some interesting suggestions concerning a shared electric car-scheme — don't miss his letter — nor all the rest!

Caroline Matheson

Regulars

Letters	2
Our Reporter	4
Bon Mot	8
Ophir	15
Trading Standards	22
Botanic Gardens	23
CROSSWORD	24
School News	26
WI	28
Mothers' Union	28
Village Gardeners	29
Bottisham Patients Group	30
Allen Alderson	31
David Brown	32
PC Report	34
Simon Goddard	36
Freecycle	37
Sue Giles	38
Church Services	39

News, Views & Reviews

Easter Lilies	3
Donations	3, 16
Red Lion Quiz6	
Tribute to Graham	7
Wheelie Bins March On	10
Cage Hill Clangers	12
Anglesey Abbey News	14
SP Community Car Scheme	18
SP Vision	19
Wicken Vision	21
Quiz Night	33

What's On

Moveable Feast	12
Bottisham Coffee Morning	15
Bulbeck Quiz Night	15
Cantilena Singers	16
Burwell Happy Tots Sale	17
G & S: Ruddigore	29
Midsummer Market	17

Wanted

Cricketers	9
Choral Singers	28

For Sale

Simnel Cakes	9
--------------	---

Cover Picture: *Have you seen this character?* by **Clive Riggs**



Letters to the Editors



Dear Editors,

Burwell (Cambridge) and District Medical Trust

Registered Charity Number: 1058344

The above Trust was created in 1996 in order to help pay for equipment not normally provided by the NHS to be used by the doctors and nurses at Burwell Surgery for the benefit of the patients.

We are a small charity but have managed to assist the Surgery by purchasing over £56,000 of equipment since the Trust started.

We have no direct fundraising events and are dependent on donations which come in various amounts – all of which are most welcome! There are collecting boxes at Tina's in Burwell and Dyke's End in Reach, both of which are regularly collected and contribute to the funds.

All donations made to the Burwell Medical Trust will help. Cheques that can be Gift-aided will benefit the Trust, therefore the Surgery and finally us as the patients.

If you would like any further information please do not hesitate to contact our Treasurer, Mrs Pam Mead on 01638 741455 or myself on 01638 743720

Ruth Scovil

Secretary to The Burwell Medical Trust

Dear Fellow Residents,

Co-operative Community Electric-Car Hiring Scheme

I'm looking at ways to resolve current transport issues in a holistic and community centred way, whereby under a 'co-operative scheme' any profits would go back into a community fund.

I'd like to know what your opinions are on a proposal I have for our parish in the future.

An electric-car hiring scheme which is a community centred 'co-operative', serving our parish and possibly our neighbouring ones too...

All opinions, ideas, comments very welcome, in fact much needed to see if we are in general agreement on the idea and to gauge support.

Email me directly to the address below.

Many thanks in advance.

Jorge Monteiro

jorge.monteiro1@btinternet.com

LOST

Gold pendant and chain on Sunday 17th February between Adams Road and St. Mary's Church. Sentimental value only. If found please telephone 741221

Many thanks,

Betty Prime

DONATIONS DONATIONS DONATIONS

What would we do without donations? Well, last year we would have made a loss, and then who would pick up the bill? We are so grateful to the many individuals who do make a contribution and also to the Parish Council. Also to those few organisations who run very successful events and give us a little token of thanks for their many advertisements. This year we have even run to a few colour pictures.

So, many thanks to all you donors and *please continue your good work*. This enables us to continue to give you news and views.

Easter Lilies

Each year we have had lilies in St Mary's Church at Easter time and, recently, many people have contributed to these in memory of a loved one.

Donations can be made anonymously or with your name and the name of your loved one. A list will then be compiled and placed in church for Easter Sunday. As a guide the Easter lilies cost £2.50 per stem last year. All contributions will be **very** welcome and will enable us to have a beautiful display.

If you would like to make a donation please put it through Sue Rust's door at 23 Greenhead Road or Ruth Scovil's door at The Oaks, Manor Farm Court, Lower End (the letterbox is in the door at the back of the house!). Please include the name of your loved one and your own unless, of course, you wish to make your gift anonymously.



From our Reporter at the Parish Council Meeting

Well, the Parish Council has gone overboard this month and is straining the financial resources of the *Crier* by producing about 10 pages of copy. Be assured, the Editor will do her best.

Peter Hart disclosed that the Village Hall Committee is planning to make the rear door of the Hall more accessible, to build an extension to store the tables and chairs, and to knock through the existing chair store to provide access to the kitchen and toilets without disturbing people in the main hall. It is expected to increase the number of bookings,. As this request is included in the draft Village Vision ECDC must be well pleased the Village Hall has moved so quickly.



Jeanette Thompson has written a strong letter demanding to know the “Disclosable Pecuniary Interests of Spouses/Partners” of members of the PC. Do MPs have to supply this information? Did the judges in the Supreme Court make a declaration of interests when they voted that part-time judges should receive a public-sector pension at a cost of about £2 billion?

At last a decision has been made about the Pound Gate after the division of opinion at the last meeting. Eric said “the timber is sound and in good condition. Put more preservative on it and it will last another 25 years.” Most agreed, and that the only replacement should be a new latching post. New quotes are being obtained which will save quite a few bob. Steve was still worried and said he wouldn’t want to climb over the gate, John thought he could get over without an accident, another mentioned his reluctance to make the climb, until Paul gave a laugh and asked “Why does everyone want to climb over this gate rather than just walking though it?”

The next item was “Lighting the Steps in the Churchyard”. I suppose the PCC response does someone some credit though it did appear to be a cop out. They liked the suggestion of using footway solar lights, and the PC went along with this a little bit, until Michael Limb explained they may be alright in Summer but in Winter they would not even last until Evensong. So that cheap option is out. The PCC (Parochial Church Council) also said the problem was the remit of the PC. “Not so”, said the PC. John pointed out that the PC had just been trying to be helpful by offering to make a contribution towards the costs. Andrew, who is on the PCC, said he suggested the PCC ask the planners but was over-ruled. At this point one PC member asked “Aren’t we just wasting our time discussing this and shouldn’t we drop it as the Churchyard has nothing to do with the PC.”

What also appears to have silenced the PC was the claim by the PCC that “Listed Building Consent “was required”. “So what?” I thought. All god-fearing Anglicans reading the *Church Times* would now know that in the early part of the year the Court of Arches overruled the ‘Bishopgate questions’. This means that most probably a light on the outside planking of the porch would receive permission, at a cost of less than £300. Also needed of course is the effort to make and follow through the application and to use the new ruling to rebut the usual anticipated

objections. As my grandmother used to say, “Where there is a will there is a way”. If there is no will, then nothing will happen. How will the PCC respond? Watch this space.

Last month you were asked to watch this space regarding Paul Latchford’s 18 questions to ECDC about Wheelie Bins. This space is now filled. John Hill, Chief Executive of ECDC, has replied in full to the Clerk and all members were impressed by the detail and honesty of his response. Because it is so long it is being reproduced over two issues of the *Crier*. So please retain your March *Crier* so that you have the full picture when the April issue appears.

Karen said she was under increasing pressure to persuade PC members to have some training. To say that the members were reluctant is an understatement. They weren’t even persuaded when told that Bulbeck PC members had had quite a lot of training. They appeared to be even proud, like a young tyke with his first ASBO. “Required by whom?” asked Steve and that appeared to end that.

We had now reached “Parish Councillors’ Reports” and Geoffrey took over and read out his report. This is reproduced in full in this issue, apart from the omission of one unimportant paragraph. He narrated it with obvious relish, timing his pauses well, but as he went on an episode of *Dad’s Army* came to mind when the Greengrocer Air Raid Warden challenged Captain Mainwaring’s right to be chairman. The clock ticked away, and when he had finished he went on in even further detail and hammered on the fact that (in his words) Mr Powell, the Chairman, “indicated that it was a given that members of the new forum were in support of the Wicken Vision.” How a howl went up from some members of the PC. “So they don’t allow criticism and other view points”, “Get Mr Powell to put that in writing”, “Let’s just voice a protest and then drop out”, “The PC gives 100% support to Geoffrey’s ant-Wicken Vision campaign”, “Geoffrey represents our view and they should listen to him”. I was a little surprised because in spite of having attended many meetings I had no idea that our PC is 100% behind Geoffrey’s long running vituperative antagonism towards the Wicken Vision.

John then made a statement and this was a very lengthy and careful explanation of just what the Wicken Forum was for. In spite of being opposed to the Vision himself, and in spite of being many times critical of the Trust’s handling of cattle etc (though they get there in the end he noticed), he did calm things. He explained that the Forum was to hear and discuss the concerns of all interested parties such as horse owners, walkers, the disabled, and cyclists, and for this it was invaluable. He went on to say that the Trust wanted feedback and not a discussion on whether it was a good or bad idea. It was an excellent explanation of the purpose of the “Community Liaison Forum”. At some point someone suggested John should represent the PC rather than Geoffrey. No conclusion was reached but there were a lot of simmering mutterings though I didn’t hear that magic word “undemocratic” mentioned, with fists beating the table.

Karen said she was under increasing pressure to persuade PC members to have some training. To say that the members were reluctant is an understatement.

In Open Question Time I put to Geoffrey that his attending this meeting was like asking Ed Balls to sit in on a Coalition Cabinet Meeting. Geoffrey thought this hilarious and said “even Peter Bone?” With a little thought he rejected Peter Bone as an option, meaning I suppose that he preferred to be likened to Ed Balls.

Nothing much happened after this, but it had taken up 35 minutes.

Alastair Everitt

Red Lion Quiz Raises £1000 for Local Charity

Ruth Rogers, CEO of Red2Green, popped in to the Red Lion during January's quiz night to pick up a cheque for £1000 and thank the locals for their generosity. Ruth touched on some of the work that Red2Green does in the local area, and said that the money raised would go towards refurbishing a sensory room enjoyed by those with autism and Asperger's Syndrome.

The cheque was presented by landlady Jo Oakes and former quizmaster Graham Wiltshire. This year sees Graham pass the reins on to Tim Doe, allowing him to step back and enjoy the quiz from the other side. As a tribute to his two years in the saddle, one of the questions had the answer 'Graham Wiltshire'!

Locals at the Red Lion continue to raise money for charity at each quiz night. The quiz takes place on the last Sunday of each month from 8pm, all are welcome.



Angela Fitzpatrick

And the Next Round will be the Music Round.....

For eleven years between 2001 and 2012 Graham Wiltshire (see picture left), who lives in Swaffham Bulbeck, has given a lot of people a lot of entertainment and pleasure as our local Pub Quiz Master Supremo. When he handed in the microphone for the last time on 30th December, at the Red Lion in Swaffham Prior, it occurred to me that the story of those eleven years is worth recording, so I've interviewed Graham and discovered the story behind all those quiz nights.

The quizzes came about because Tony and Colleen Sullivan, then landlords of the Black Horse, Swaffham Bulbeck, wanted to attract more people to the pub on Sunday evenings and, at the same time, raise some money for charity. Graham agreed to be quiz master as he'd run the odd music quiz. Over the years he has trawled through quiz books and TV and radio quiz shows for his questions, keeping a carefully hand-written record of them all to avoid repetition. He's also picked up ideas for questions from programmes like the BBC's *Final Score*. For instance, he heard the manager of Wigan Athletic Football Club being congratulated on his team being the only one in English football never to have been relegated from the top league. As the team had only been in it for eight years it wasn't quite the achievement it appeared. At the next quiz Graham put the question and was quietly pleased that when the footballing cognoscenti confidently came up with the answer 'Arsenal', he could tell them that Arsenal was relegated in 1913!

Recent team names at Graham's quizzes have included *Clueless, Special Fried Five, Scumbag College, The Swinging Sixties, Motley Crew, Senior Moments and In it for the Chips*

The quizzes were a mix of regular rounds like General Knowledge, Current Affairs, Sport and Entertainment, with some occasional rounds thrown in to give people a chance to use their reasoning powers as well as their memories. These included Connections – the final answer had to identify the connection between the previous answers; Trivia – where the last letter of one answer gave the first letter of the next; and Wipe Out – where one wrong answer lost all the points gained in the round. Wipe Out tested how long it took teams to work out that an omitted answer was better than a wrong one!

However, Graham's *pièce de resistance* has always been The Music Round: ten excerpts from popular songs he recorded onto tape from his own massive collection of CDs and records, and occasionally from the radio. To gain points, quizzers had to give the name of the song and the singer or group. He used songs from the 1960s to the present day; when one team complained that there were no songs from their era, the '40s and '50s, Graham put two 1950s' songs in: *Magic Moments* sung by Perry Como and *Memories are Made of This* sung by Val Doonican. The best answers

they could manage were: *Magic Moments* sung by Val Doonican and *Memories are Made of This* sung by Perry Como!

Anyone who's been to a pub quiz knows that the first thing your team must do, and often the hardest, is to choose a name. Recent team names at Graham's quizzes have included 'Clueless', 'Special Fried Five', 'Scumbag College', 'The Swinging Sixties', 'Motley Crew', 'Senior Moments' and 'In it for the Chips'. The quiz nights always ended with the landlord serving free chips and sandwiches. Teams had a maximum of six members and each member paid £1 to play. At the last quiz there were twelve teams and sixty players and over the years there have been as many as fourteen teams playing. The smallest turnout was seven teams but some have been playing since the beginning in 2001. Regular quizzers know to have their table occupied at least half an hour before the start.

Graham's quiz nights at the Black Horse and the Red Lion have made sure that on the last Sunday of each month at least, the pubs do good business. Some people are not pub regulars and only go for the quiz. Not everyone consumes much alcohol but whatever one's tipple – six pints of best bitter or one glass of fizzy water – everyone is made to feel at home and there's never any antisocial behaviour. Not all the teams are from nearby villages; there are regulars from Ely, Exning and Soham. At the end of the evening the winning team has some wine to take home and the chosen charity for the year is better off by a few pounds. Graham has collected an average of over £1,000 a year for these charities:

2001: Milton Hospice £1,100

2002: Great Ormond Street Hospital
£1,700 (including a fun run)

2003: Magpas: £2,000

2004: Guide Dogs for the Blind £500

(including a bungee jump)

2005: Swaffham Bulbeck School:
£1,000

2006: Arthur Rank House: £620

2007: Alzheimer's Society: £900

2008: Macmillan Cancer Support: £1,000

2009: Papworth Hospital: £710

2011: East Anglian Air Ambulance: £800

2012: Red2Green: £1,000

Total: £11,330

Graham has decided to stop running the Sunday evening quizzes as he doesn't use the Internet and finding questions has become too time consuming among all his other jobs. However, the quizzes continue on the last Sunday of each month at the Red Lion in Swaffham Prior, led by Tim Doe, with Graham a member of the Scumbag College team. Guess which team will win the music round! Graham has thoroughly enjoyed these last eleven years of quiz mastering and is very grateful for all the support he's received both from the pub landlords and from the quizzing public.

His fund raising activities will continue as he's agreed to run a quiz at the Black Horse every four months or so for Sharon and Paul Crossley who want to support the Hearing Dogs for the Deaf charity (www.hearingdogs.org.uk). The first one will be on Sunday 5th May – the bank holiday weekend.

Sylvia Thomson
(*Senior Moments Team*)



Reach Cricket Club

Welcomes new members from Swaffham Prior

Reach Cricket Club is in an exciting period of expansion. We are in the process of creating our own cricket pitch on a field off the Burwell Road and are looking to bolster our membership. We currently play around 10 friendly matches a year, plus an annual performance in the National Village Cricket Cup. Our teams are all-ability, so don't worry if your cricketing skills are mediocre. We have in the past fielded everyone from a former test player to a German boy who had never played cricket before.

If you are interested in playing regularly, or even just occasionally, please contact Ross Clark on 01638 743725 or at rossjclark@aol.com

Simnel Cakes for Sale

Traditionally, Simnel Cake has been enjoyed on both Mothering and Easter Sunday. This year you can serve up a delicious homemade offering with no more effort other than parting with some cash and all for the benefit of St. Mary's Church.

Orders can be placed by contacting Janet, 01638 743472, 07833 960678 or janet@adventurersfarm.co.uk. For just £10.00 (payment taken at time of order) your teatime guests will be in for a treat! Please feel free to provide your own serving plate for an extra personal touch. Cakes can be delivered to your home or collected by you in time for Mothering Sunday (10th March) or Easter Sunday (31st March).

A royal icing version (seen back left in plain state) can be ordered as an alternative to marzipan and then trimmed with appropriate decorations

Janet Willmott



Wheelie Bins March On

Part One

John Hill, Chief Executive of ECDC, replied in full, in his letter to the Clerk, to the questions prepared by Paul Latchford regarding Waste and Recycling. Part Two will appear in the April *Crier*.

7th February 2013

Dear Mrs King

WASTE & RECYCLING

I am writing in reply to your recent letter regarding planned changes to recycling collection services in the District. I have provided responses below to the issues that you have raised & hope these are as required.

► *As I understand it the new service will offer a wheeled (green?) bin for garden waste and food waste and a wheeled (black?) bin for recyclables: paper, glass, cans, plastic, tetrapak and cardboard together with a black bag for refuse. If individuals do not want a wheeled bin do they still put all waste (refuse and recyclables) into black refuse bags?*

Services will be: Green wheeled bin for food and garden waste. Blue wheeled bin for paper, glass, cans, plastic (bottles and hard plastic food and drinks containers), tetrapak and cardboard. Black sack refuse – unchanged.

Where in the Council's judgement it is not possible to provide a wheeled bin service because of space or access issues, existing recycling services will continue to be provided. If, however, a property is judged suitable for wheeled bins and a resident declines to accept them, no alternative recycling service will be offered. In this case, residents can share facilities with their neighbours, use recycling banks or take recyclable waste to a household waste recycling centre.

If a resident declines wheeled bins & is not prepared to recycle through other options mentioned above, recyclable items and food waste can be disposed of through black sack refuse collections, but not garden waste. Garden waste would need to be taken to a household waste recycling centre or home composted.

Where possible the Council will work with residents to avoid recyclables being disposed of through black sack waste, but will not offer an alternative recycling service where a property is thought suitable for a wheeled bin collection service.

► *The ECDC website is very clear that there will be no change to the refuse collection service. Currently some individuals put all waste into black sacks (residual waste and recyclables) and this is taken away. Will this continue to occur under the new service?*

There will be no changes to the current refuse service. The Council will encourage residents to recycle as much as possible of their waste, but will still

collect recyclables if presented for black sack collections.

► *Under what circumstances will waste not be taken away by the collection agent?*

The black sack collection service is intended for small items of household waste that are typically thrown away on a daily basis. Currently waste will be rejected if it includes garden waste, business waste, construction and demolition waste, large bulky items etc & items not presented in sacks for collection. The criteria for acceptable black sack waste will not change with the introduction of new recycling services. As now, waste must be available for collection on the property boundary by 7am.

► *Is the black bag service going to be removed in the future?*

There are no current plans to make any changes to the black sack refuse service. By accepting the grant to improve recycling services, the Council has guaranteed to maintain weekly refuse collections for a minimum period of 5 years.

► *If there is limited take up of the wheeled bin offer by the public what happens to the bins that are not used?*

It is anticipated that the majority of residents will want new wheeled bin services, but any remaining stock will be held for when replacements are needed or



where new properties are built.

► *Are there plans, or will there ever be plans, to charge members of the public who have failed to take up the offer of free wheeled bins in the first instance, for the acquisition of a bin at a later stage - for example if the black bag service is removed in the future?*

There are no plans to charge residents for the provision of wheeled bins. It is anticipated that some residents who initially refuse wheeled bins will reconsider once the service is introduced & request bins. These will be provided on a free of charge basis. Our aim is to encourage residents to make full use of the new service & charging for bins would work against this aim.

► *Would there be any obligation to buy a set of wheelie bins if the property changed hands and the new owners wanted to use wheelie bins when the original owners had not taken up the offer and will these possible obligations be well advertised?*

If a new resident moves in & there are no wheeled bins at a property, they will be provided free of charge.

The Cage Hill Clangers

EXTRACT

From a Report to the Parochial Church Council by the Tower Captain of St Cyriac's Church

“ Undoubtedly the highlight of the year was the establishment of a handbell team by Sharyn Robinson, our hardworking Tower Secretary. They were brought out to ring for the nationwide 7.50 introductory ring for the Olympics. At one end of the village the church bells rang and at the bottom of Cage Hill a scratch team gave a great display on the handbells. Their fame spread and they became a feature at the Church Carol Service. Starting with an impressive Debussy type abstract impromptu, they moved on to variations on the theme of ‘Jingle Bells’, and ended with a confident rendering of ‘Hark the Herald Angels Sing’.”

Alastair Everitt

PS. If anyone wishes to take up either church bell ringing or handbell ringing then please contact Sharyn Robinson on 07740 171917 and you will receive a very warm welcome, enjoy some wonderful social evenings, and acquire new skills.

Moveable Feast

THIS YEAR'S moveable feast is to be held on Saturday 23rd March, 7.00pm start, and is as you know, for those of you who have been before, an event not to be missed.... three courses in three different places - sounds like madness but you have to be there. Venues yet to be confirmed but will of course, as in previous years, be spectacular! If you haven't participated before make this year your first - there will be excellent food and warm hospitality to be had at each and every course. Numbers are of course restricted and so it is on a first come first served basis and newcomers to the village are especially welcome. It is a wonderful way of meeting other village folk in relaxed and convivial surroundings. Proceeds to St. Mary's Church, it is really good fun, where else do you get three courses, wine, exceptional company and all for £17.50 a head?? Price held for the FIFTH year running!!

Waiting by the 'phone for your call to reserve a place and for offers to host a course! **Last bookings taken on 16th March** - don't miss out.

Janet Willmott



The Winter Walk. 2b, or not 2?

We few, we happy few, we band of brothers;
For those today that share this mud with me
Shall be my brothers; be they not from Prior;
And yet withal; however sludgy their condition be.

And gentlefolk in Prior who abed did stay
Shall smugly think themselves
Snugly comfy they were not here;
Yet hold their promise cheap, to '*come next year*',
To walk with us on some cold winter's day.

Whilst we, did brief return to home,
And quickly change our boot and venture forth,
To meet again our new-found brothers' group
And sup with them, a fine prepar'd soup.

Ophir , with a nod to the Bard.

News from Anglesey Abbey and Wicken Fen

The Wicken Fen Community Liaison forum had its first, introductory, meeting at Wicken Fen on 12th February. The idea of the Community Liaison Forum is to combine Wicken Fen's previous local consultation groups; the User Forum, the Lodes Way Steering Group and the Parish Liaison Group into one Community Liaison Forum. The original groups have reached natural end points but we did not want to lose the valuable input these groups have previously provided. The purpose of the Community Liaison Forum will be to provide a communication tool for members of the local community to discuss issues, bring forward engagement/access opportunities and help influence developments that are in tune with local needs & desires. Present at the first meeting were Parish Councillors and representatives of user groups such as cyclists, horse riders and walkers. If you represent a group that would like to be involved please get in touch with Community Ranger, Lois Baker on 01353 720274 or e-mail lois.baker@nationaltrust.org.uk.

A quick reminder that it's Mother's Day on Sunday 10th March. Why not treat you mum to a special **Mother's Day High Tea** at Anglesey Abbey on either Saturday 9th or Sunday 10th when you can enjoy a delicious waitress served high tea including freshly made sandwiches, homemade scones and a selection of cakes, all served on vintage china. There are sittings at 12, 1.30 & 3pm costing £25 adults and £12.50 children. Please reserve your table by calling Veronica on 01223 810097.

The theme for this month's **Mucky Pups**, craft and adventure sessions for pre-schoolers at Wicken Fen is **Signs of Spring**. Sessions run on Wednesday 6th & Thursday 6 March from 10.15 -11.45am and cost £3.95 per child.

It's time to start getting the garden ship-shape for summer - Local Weaver, Nadine Anderson, will be leading a series of half-day **Willow Weaving Workshops** at Wicken on 22-23 March, 10-12.30pm or 1.30-4pm, where she will be teaching how to construct traditional willow plant supports. Tickets £30 (including materials) are available on 01353 720274.

For Easter we have our popular **Easter Trails** at both Anglesey Abbey and Wicken Fen (Fri 29 March –Monday 1 April £2) - follow the trail and hunt for clues to claim your delicious chocolate prize. At Wicken we are also holding an **Egg & Spoon Eggstravaganza** on Bank Holiday Monday from 10.30 – 4pm, where we will have a selection of fun egg & spoon races for all the family including obstacle and three legged races.



The Cantilena Singers
Spring Concert
Saturday 20th April 7:30 pm
St. Mary's Church, High Street
Swaffham Bulbeck

Director Daniel Spreadbury

Programme selections:
Byrd - Mass for Four Voices
Harris - Faire is the Heaven
St. Saens - Ave Verum
Wood - Hail Gladdening Light
Lotti - Crucifixus

Tickets £10 and £ 8 (concessions) on the door; refreshments available



Donations!

Many thanks to Re:New for their very kind donation to the *Crier* this month.

BURWELL HAPPY TOTS

Second Hand Sale

If you have a baby or children 5 years and under you'll be only too aware of the cost of clothes, toys and equipment for your little ones...

Why not save money by coming to our Second Hand Sale of high quality clothing, toys, equipment, maternity items, games and more.? You'll be surprised at the amount of great bargains to be had. The sale is run by local baby/toddler group Burwell Happy Tots and will be **on Saturday 20th April** from 10.30 -12.00 at the Gardiner Memorial Hall, High Street, Burwell CB25 0HD. Entry to the sale is 50p which supports

Burwell Happy Tots. For more information including how to be a seller, please contact Libby Lomas 07766335174 or e-mail

burwellhappytots@hotmail.co.uk



Advance Notice!

Midsummer Market - 15th & 16th June, 2013

St Cyriac's Church

Donations for the following stalls wanted:

Plants and Gardens (please remember us when taking cuttings or thinning your borders)

Bric-a-Brac – everything welcome, can collect now, see contacts below

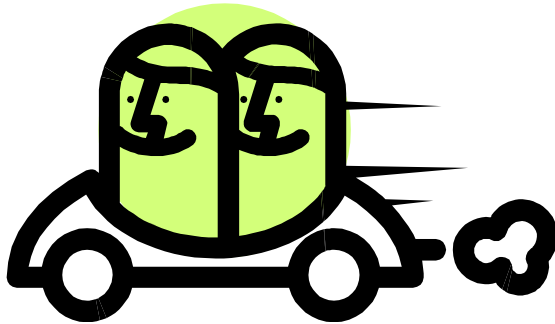
Books, Games, Toys and Tapes etc

“Pre-Loved” Clothing – sale on 50/50% basis

Look out for further information in next month's Crier of other stalls, activities, events and attractions – 2013 is a “big” year for St Cyriac's Church, find out why in April!

For collection of donations please contact:

Swaffham Prior Community Car Scheme



A voluntary community car scheme for residents of Swaffham Prior providing door-to-door transport for those who do not have the use of a car and are unable to use conventional public transport to cover essential trips eg medical, dental, chiropody, or visits to Burwell or Bottisham Day Centres

If you would like to use this service or **volunteer as a driver** please contact Janet Willmott

07900 351742

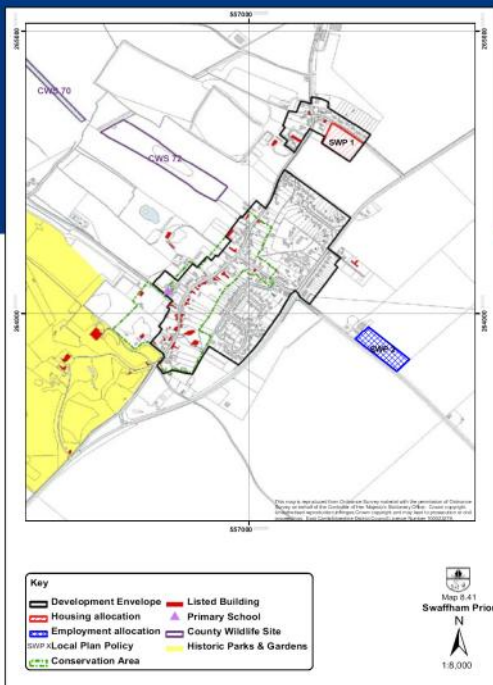
preferably between 9am-5pm, Monday to Friday

Supported and Subsidised by Swaffham Prior Parish
Council

Have your say on the future of Swaffham Prior

East Cambridgeshire District Council is preparing a new 'Vision' for Swaffham Prior. It includes proposals for new housing and employment sites on the edge of Swaffham Prior at the following locations:

- **A housing allocation at land off Rogers Road**
- **An employment allocation at land east of Goodwin Farm, Heath Road**



Consultation on the draft Vision will run for 6 weeks, between 11th February and 25th March 2013.

A public exhibition will be held from 4pm – 7pm on **Friday 15th February 2013** at Swaffham Prior Village Hall where you will have the opportunity to view and comment on the proposals in the draft Vision.

For further information on how to comment on the draft Vision, see the District Council's website at www.eastcambs.gov.uk/local-development-framework/east-cambridgeshire-local-plan or email ldf@eastcambs.gov.uk.

If you have any questions, please call the Council's Forward Planning team on 01353 665555.



GEOFFREY WOOLLARD

THE WICKEN VISION

AND BEING GLARED AT

On Tuesday, the 12th of February, 2013, I attended, as a unanimously endorsed representative of Swaffham Prior Parish Council, a meeting at the Learning Centre at Wicken Fen. The meeting was billed as ‘Wicken Fen Community Liaison Forum.’

About 25 people were present. Most were given and most wore sticky name labels, though no-one was asked to say who he/she was or whom or what he/she was representing. I was not able to tell how many other Parish Councils were represented. I recognised some people as National Trust officers. I also recognised a few friends.

The meeting, timed for 6.30 p.m., started late. A Mr Andrew Powell commenced proceedings. I interrupted him and said that I had been a member of hundreds of committees where the normal procedure at the commencement of business at meetings was to elect a chairman. Mr Powell said that he had been elected as chairman of this new forum by the National Trust’s Wicken Fen Local Committee. I responded by suggesting that the National Trust obviously wished to have a chairman who would do the Trust’s bidding.

I was glared at.

Mr Powell then proceeded to introduce himself and briefly to outline the purposes of the meeting and planned subsequent meetings. Mr Chris Soans, an officer of the National Trust, then produced an illustrated presentation that described and showed some of what had happened during the past twelve years. He also described the Trust’s consultative processes naming a number of groups whose input had been valued and taken account of. The ‘Parish [Councils] Liaison Group’ (at which I was a regular attendee) had not met ‘for some time.’

I asked why two groups appeared not to have been consulted. I mentioned a very important group, the farmers, and, perhaps, a less important group, the trustees of ‘The Little Chapel in The Fen.’ I described ‘The Little Chapel in The Fen’ as probably the most significant historical building within the area of the ‘Wicken Vision.’ I pointed out that I was both a farmer and a trustee of ‘The Little Chapel in The Fen.’ I noted no satisfactory answer to my question.

And I was glared at.

Mr Powell next outlined how he saw the constitution and objectives of the new Wicken Fen Community Liaison Forum. He indicated that it was a given that members of the new forum were in support of the Wicken Vision. I interrupted him

again and asked how the views of opponents of the Wicken Vision were to be accommodated. Mr Powell and two other persons stated that they did not wish to waste their time in discussing those views.



I said that such wishes put me in an awkward position as, whilst I was and am personally opposed to the Wicken Vision, I was actually present as a unanimously endorsed representative of Swaffham Prior Parish Council, which was also opposed to the Wicken Vision, in part because about half of the land area of the Parish was planned to be taken in or over for the purposes of the Wicken Vision. Moreover, I said, there was and is a substantial element of local people who were and are also opposed to the Wicken Vision.

I said that the Wicken Vision's opponents wished for it to go away: they harked back to the days of [Lieutenant] Colonel [Charles] Mitchell, M.B.E. [the Warden of Wicken Fen in the 1960s and 1970s], when there was relative peace and quiet for all, including nature. (Wicken Fen is still called 'Wicken Fen National Nature Reserve').

I suggested that, in the circumstances, it might be better if I left the meeting. Two persons, Mr Barry Garwood of Burwell and Ms. Joy Fuller of Wicken, spoke in support of my views being heard.

Despite this, I was glared at again.

I decided to leave the meeting and said these words, 'I wish you all well personally but I wish the Wicken Vision ill.' I was at home by 7.30 p.m.

In conclusion, there appears to be a problem with regard to Swaffham Prior Parish Council and the Wicken Fen Community Liaison Forum. I think that it is unlikely that I shall be invited to attend further meetings. If the National Trust wishes to see me replaced by someone more willing to go along with the Wicken Vision plans, Swaffham Prior Parish Council may wish to consider appointing another Councillor to replace me. However, Swaffham Prior Parish Council is on record as being opposed to the Wicken Vision and any member of the Council who took a different view and attended the meetings as my replacement would not be representative of Swaffham Prior Parish Council. Equally, a person who is not a member of the Council, who is known to take a different view, might be more acceptable to the National Trust but would still not be representative of Swaffham Prior Parish Council.

Geoffrey Woollard

What can you do when retailers face financial difficulty?



With recent news of well-known high street retailers facing financial difficulty, you may be wondering what to do if goods you have paid for are not delivered or they are faulty and the company goes into administration.

Trading Standards have put together the following advice to help you to protect your money:

Credit card purchases

When buying goods or services with a cash price of more than £100 but less than £30,000, it is advisable to pay for at least part of them with a credit card. That way, if the retailer is unable to deliver the goods or there is a fault with them, the card provider will be liable for the goods too.

Debit card purchases

If you pay by debit card, the provider (bank) or Visa/Mastercard terms may help with any claims you may have. However, unlike a credit card, this differs between providers so you should be clear about what assistance you will get for non-delivery or faulty goods. The card agreement will state any terms you need to meet for claims - such as timescales for reporting a breach of contract by the retailer and any evidence you must provide. If you meet the terms for making a claim but are unhappy with the card provider's response you should follow their own complaints procedure.

For both credit and debit card purchases, if you remain dissatisfied with the card provider's response you can raise the matter with the Financial Ombudsman Service (FOS) www.financial-ombudsman.org.uk who will decide if the complaint was valid and award damages if applicable.

Buying by PayPal

The same procedure for claims for debit card payments also applies to PayPal payments as, although PayPal aren't a bank, they are signed up to the FOS. Other money transfer services have similar terms to PayPal but may not be signed up to the FOS for dispute resolution. You are therefore advised to check their terms.

Cash or cheque

If buying goods by cash or cheque then unfortunately this is a case of 'buyer beware'.

Another common concern for consumers is the validity of gift cards or vouchers for a company that has entered administration. Unfortunately these are accepted only at the discretion of the administrators. There is no express right to use them - even though they are effectively cash.

If you require any further advice or information about any of the matters in this article please contact our partner, Citizens Advice Consumer Service, on 08454 040506. For business advice and support contact 0345 0455206

Charlotte Wilson

Supporting Businesses and Communities Officer

SPRINGING IN TO LIFE

This month, there is an explosion of colour and activity in our gardens as plants respond to the lengthening and warming days – seeds germinate, and mature plants paint the land a welcome rainbow with a rush of bud break and leaf break.

Many northern hemisphere plants have survived the winter in a dormant state brought on by chemical changes within plant cells. These chemical changes are triggered by the drop in temperature and shorter day lengths of autumn and essentially plant growth is shut down. Anti-freeze proteins in many plants inhibit the growth of ice crystals that would damage the plant tissue in the winter months (snowdrops are particularly rich in antifreeze!) and the miniature, tightly-packed leaves and flowers that formed at the end of last summer are encased in a great array of protective bud scales, often additionally protected by sticky resin to deter grazers – think of horse chestnuts – or even thermal vests – think of the suede-textured wraps on the Magnolia buds. It is the combination of



prolonged winter cold followed by subsequent spring warmth that triggers a physiological response in trees particularly, altering the chemical balance of hormones and enzymes in favour of resuming growth and promoting bud break.

This exposure to seasonal change is also essential for the germination from seed of many plants, which is why the Botanic Garden team could be seen sowing into the snow in January! We are delighted that James Hitchmough, Professor of Horticultural Ecology at the University of Sheffield and the plant architect co-responsible with Nigel Dunnett for the globally acclaimed wildflower meadows at the Olympic Park, has developed a new drought-tolerant perennial meadow planting for us at the Garden, with a long flowering season from April to October. He has selected a global mix with a strong emphasis on Mediterranean and steppe environments from the Colorado plateau through to central Europe and Asia, but with elements from the dryer parts of the North American prairies and the summer rainfall regions of South Africa – the great majority need a period of cold to promote growth, a process known as stratification. We first laid a 7.5cm layer of sand – that's 60 tonnes all shifted and spread by tractor and spade – to create a sterile barrier to prevent weeds coming through and act also as a perfectly free-draining seed bed. Professor Hitchmough then hand mixed the seed into nuanced combinations to suit the varying shaded and exposed conditions, mixed with sawdust to help achieve an even spread and scattered the mix into the very cold seed bed (we had scraped away the January snow). While we won't have the instant flowering gratification of an annual meadow to enjoy this summer, it will be very rewarding to see how this experiment in growing a global drought-tolerant perennial meadow from seed develops, both from the visual and horticultural point of view.

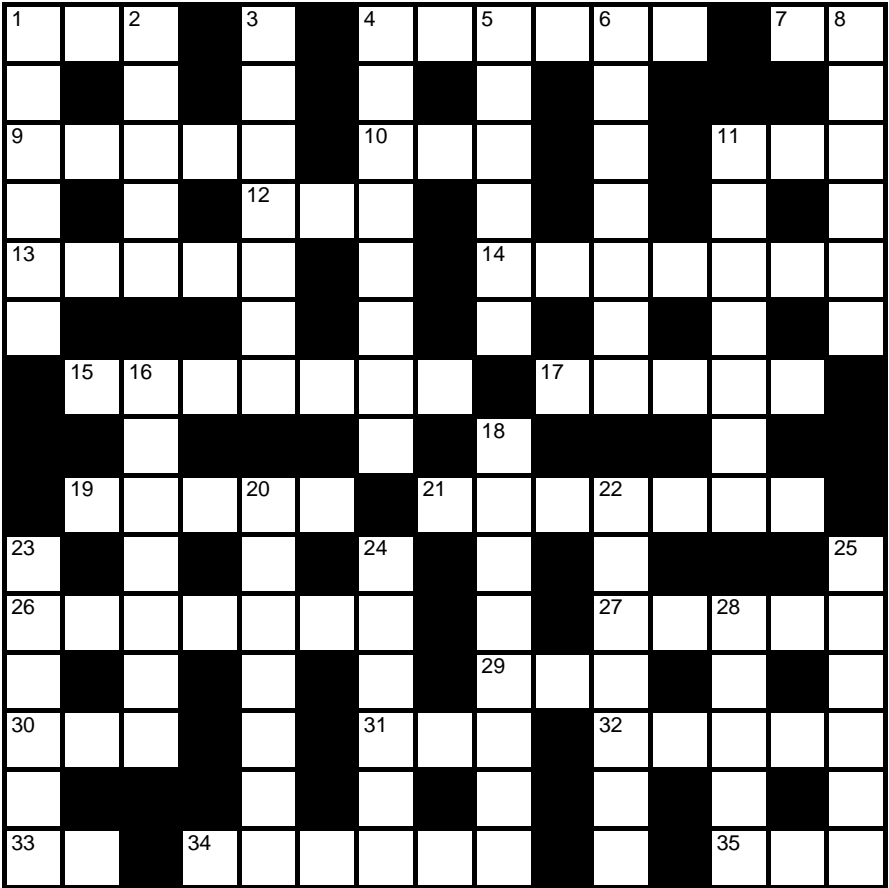
Crossword Number 98

Compiled by

Sponsored by **The Red Lion**

OUNCE

Clues starting ** have answers with a common theme. Send your answers to the editors by 18 March 2013. The first correct solution out of the hat will win a free meal for two at the Red Lion — See the Manager at the pub for full details.



Name:.....		
Address:.....		
.....		Tel:.....

Across

- 1 **Star of local origin (3)
- 4 **Quiet tramps accompany 34 (6)
- 7 We take extremes of 21's neighbour (2)
- 9 Inn returns to ancient city for Aladdin's lamp action (3,2)
- 10 Found in dishevelled state the night before? (3)
- 11 Subject of Simon's partner? (3)
- 12 Old British company discovered here on continent (3)
- 13 Unsuitable petunia, all over the place, that is removed (5)
- 14 Poor rating for local system? (3-4)
- 15 **Moon made of cheese? Premium Brie label revealed (7)
- 17 Daisy named after 1A or 1D? (5)
- 19 **Slytherin student's constellation? (5)
- 21 **Pasta you French cook for remotest neighbour (7)
- 26 Ross abandoned reordered square roots on circle (7)
- 27 Drink to 17 when Queen is abstracted (5)
- 29 Stubbs for one (3)
- 30 Conditions in arctic? Yes (3)
- 31 Pass officer (3)
- 32 Retsina I adapt for nymph (5)
- 33 **Moon with a ring? No (2)
- 34 **Dose I'm mixing for 4's partner (6)
- 35 **Tolstoy's constellation (3)

Down

- 1 **Knight owes nothing to dog? (6)
- 2 **Sign the French left Braille messed up (5)
- 3 **Giant commences joining up

points. It's too easy, really (7)

- 4 **Dissipated Princess asleep in cluster (8)
- 5 **Wild Brent goose gets lost on moon (6)
- 6 **Asteroid hidden by endomorph Eustace found (7)
- 8 **3's neighbour takes vase after short day (6)
- 11 Mythical hunter transformed at ocean (7)
- 16 **Strange curry setter finds close to 1A (7)
- 18 **Poirot bearing constellation? (8)
- 20 **Atwood's novel nebula (4,3)
- 22 **Blue bird madness after male departs for moon (7)
- 23 **Notes on little constellation (6)
- 24 Number charm twisted weight (6)
- 25 Kind of poker used on 33 for artist's pad (6)
- 28 **Moon used in laundry (5)

Solution to crossword no. 97

D	A	M	P	E	R	A	D	O	P	T	E	R	S
E	A	A	A	M	E	E	N	I	C				
R	E	I	S	S	U	E	C	H	R	O	N	I	C
I	N	T	A	A	I	U	K						
S	O	S	O	S	T	A	N	D	S	T	I	L	L
I	H	F	Y	T	H								E
O	L	E	V	E	L	R	E	L	A	P	S	E	
N	E	A	S	E	R	B	E	S					
S	T	A	T	U	T	E	S	L	A	P	U	P	
F			H	A	G	E	T	H					
R	E	D	H	E	R	R	I	N	G	Y	E	T	I
O	I	R	T	O	V	M	N						
L	O	V	A	B	L	E	M	A	I	L	B	O	X
I	A	E	R	E	S	E							
C	A	S	H	D	E	S	K	M	A	D	R	A	S

We congratulate Robert Nunn, the winner of last month's competition, who should collect his prize certificate from the editors. Honourable mentions go to Jenny Brand and Tamsin Budd.

School News



Despite the snow earlier this term, school opened. Thank you again to staff and parents who braved the conditions to



Mars Class assembly: One of the model dragons being carried by the group who made it.

come in. We celebrated by spending

some time outside building snowmen and enjoying the snow. In class, children then spent time learning about snow, including how snowflakes are formed and thinking about 'WOW' words to describe snow in their creative writing.

Dee Noyes came in and led another assembly for us. We found out about the wedding at Cana and children who participated in the Family Service performed the story for us. We all had a party and learnt about Jesus, the miracle maker.

The school had a visit from 'M + M Productions' on Wednesday 30th January. We saw a performance of Cinderella and enjoyed cheering for the prince and Cinderella and booing the stepmother and ugly sisters.



On the discovery of mysterious footprints outside the classrooms the children in Mercury and Mars classes also discovered some shiny, silver scales and a big pile of burnt wood and ash. Mars class assembly was held just before the half term holiday and we found out all about the special visitor to the school...a dragon! The children told us about how they had used the evidence (of footprints, burnt wood and ash and silver scales) to work out that a dragon had been in our school grounds. We were treated to a model dragon fashion parade and a powerpoint on how they had made them. We were read stories about dragons that they had written and two French songs were performed with actions. All in all a very pleasurable time was had by all!



Neptune and Saturn classes are continuing to find out about the human body and have been creating their own artwork based on paintings done by Picasso. They have been finding out about Cubism and using portraits of each other to produce their own masterpieces!

Over the next few weeks, Neptune Class will be going on a residential trip to Burwell House, where they will be learning about being independent away from home and carrying out team challenges. Neptune and Saturn classes will be going to the Big Bang Fair in London which has been kindly sponsored by the trustees in the village. Exciting times ahead!

Hannah Curtis

Head teacher



Fun in the snow



WI Notes

With the January meeting cancelled due to the severe weather, the first meeting of 2013 was on February 18th when the President, Pat Airey, gave a talk on Travels in Japan. Travelling with 4 friends as guests of Japanese contacts, Pat was able to gain insight into the life of Japanese families rather than the less intimate view usually seen as a tourist. As well as hearing about the breathtaking sights and interesting locations visited we also learned of the need to be aware of local traditions and various rules of etiquette that needed to be observed as a guest in someone's home. It was a very entertaining and enlightening evening which finished with the usual social time for refreshments and raffle. The next meeting is the Annual Meeting on 18th March when the business will be followed by some entertainment. New members and occasional visitors are always welcome. Regular meetings are on the third Monday of the month in Swaffham Prior Village Hall at 7:30 so come along and see if you would like to join our friendly group.

Pat Cook

01638 742224



Mothers' Union

We began 2013 with a service of Holy Communion in Lode Chapel which was conducted by The Reverend Sue Giles, at which time four new members were enrolled.

Copies of our programme for the year are to be found in each of the churches in the Anglesey Group.

Our next meeting will be held in Lode Chapel on Thursday, 21st March, 2013 at 2.30 p.m. when The Reverend Stephen Talbot will be talking to us about his role as Co-ordinating Chaplain for Cambs. Constabulary Police. During this meeting we will also be holding a 'Spring' bring and buy sale.

Our Mothers' Union meetings are held on the third Thursday of each month in Lode Chapel at 2.30 p.m. and, if you would like to join us, you would be most welcome.

Anne Phoenix

New Members Wanted!

Newmarket Community Choir is a friendly choir with approx 25 members. We meet every Tuesday at The Palace House Newmarket from 7 – 8.30 pm and sing a wide variety of songs. You don't need to have previous singing experience or be able to read music. Enthusiasm and a good sense of humour however, do help!

Why not give it a go? We are currently preparing for a major event – 'The Really Big Sing' to take place on July 13th at the Darley July Cup Day, Newmarket.

For more details email budslat@aol.com, Find us on Facebook, Twitter and our new web site www.newmarketcommunitychoir.co.uk.



VILLAGE GARDENERS

Nigel Start from Great Wilbraham, our February speaker, proved to be extremely enthusiastic and very knowledgeable about his subject – Self-sufficiency from your Garden. He began with a little history, telling us that the occupants of medieval villages were largely self-sufficient thanks to community use of common land. However, much of the common land disappeared with the Enclosure Acts of the 1790s and with the Industrial revolution came towns and cities with overcrowded housing and no opportunity for most folk to grow anything for themselves. However, in 1908 the Allotments and Leisure Gardens Act for the first time gave town dwellers the chance to grow their own vegetables. This trend continued and increased greatly during the two World Wars. The present economic conditions have again encouraged the growth of self-sufficiency and, apparently, there are now fifty-year waiting lists for allotments in some areas of London!

The many reasons for ‘growing one’s own’ were touched upon – the pleasure and satisfaction of gardening; the availability of fresh, flavoursome food which can readily be pesticide-free; the benefits of the healthy exercise of gardening and not least, huge cost savings.

There are certain requirements for growing healthy plants – plenty of light, adequate moisture, nutrient-rich soil, shelter or warmth, and good soil structure. The importance of making good compost was emphasised, as well as the benefits of keeping chickens for their eggs and soil-improvement in a rotational system.

Our speaker strongly recommended F1 varieties of seed for good cropping, especially in small gardens, and suggested that 200 onions would be needed for a family for a year! Excess produce can always be stored, fed to the chickens, or simply given away to neighbours and friends – always a popular solution!

Our next meeting will be on Tuesday 19 March at 8pm in the Village Hall when Herbie Collen will be talking on *The Rejects I have Recycled* (an intriguing title!). Everyone welcome.

Mary Hart

**Swaffham Bulbeck Summer Theatre presents
Gilbert and Sullivan's**

Ruddigore

**Wednesday - Saturday 12th - 15th June 7.30 pm (matinee Saturday
2.30)**

Downing Farm, Station Road, Swaffham Bulbeck.

**We look forward to seeing you. Ticket prices available in later
editions.**

News from Bottisham Patients' Group

If you went to Bottisham Surgery in January you may have completed a questionnaire to show your level of satisfaction with the care and services which the Medical Practice provides. This was the GPAQ (General Practice Annual Questionnaire) survey, commonly used by practices in England so that comparisons and general trends can be identified and used to plan provision for the coming year. The survey showed that the level of satisfaction with the care patients receive from the doctors and nurses at Bottisham is extremely high, often well over 90% for different aspects of care. This, coupled with the fact that Cambridge University Hospitals Trust was voted best trust in England by the *Doctor Foster Hospital Guide 2012*, we're reminded how lucky we are to live in an area where the standard of both primary and secondary health care is so high. A summary of the survey's findings and the action plan arising from it will be published in the April village magazines.

Good bye and good wishes

Joy Williamson retired as phlebotomist at the Bottisham Practice on 31st January where she's been exercising her wizardry with the needle for ten years. Her expertise and cheerfulness will be much missed and we wish her a happy and healthy retirement. Maxine Copland has joined the staff as a phlebotomist and we welcome her and wish her well.

Walking Group

Despite the wintry weather the group had two walks in February and more are planned for March: Thursday 7th and Wednesday 20th – meeting at the surgery at 11:00 am. The walk's destination will be decided on the day depending on the weather and the walkers' attending. You won't need fell walking boots and trekking poles – just clothing appropriate for the weather and comfortable walking shoes.

Children's Toys

The Practice has been preparing for its visit from the Care Quality Commission (CQC) later this year. As a result of the Infection Control Nurse's assessment, all toys have been removed from the consulting rooms and the Wendy house in the children's corner will be repainted with easily washable paint. The Patients' Group will be responsible for regularly cleaning it and washing its equipment. **When your children come to the surgery and need something to play with, please bring some of their own toys.**

Advance notice of the AGM

*All patients are invited to hear **Dr Margaret Elliott** talk about*

Healthy Ageing

Thursday 25th April 2013, 7.00 pm

Come and learn about the Practice and let the Patients' Group Committee hear your views about what it should be doing in the coming year

Come and volunteer to serve on the Committee where your views and ideas will be warmly welcomed



1. Community Land Trusts

The role of Community Land Trusts is the delivery of affordable housing and community infrastructure. The first stages in the Stretham and Wilburton Community land Trust was started when the SWCLT was formally established in October 2012.

It is expected to deliver between 15-20 CLT owned homes by 2014/15.

There is an acute shortage of affordable homes in the District. Between 2006 and 2011 an average of around 120 affordable dwellings were delivered per year. CLTs offer an additional route for delivering affordable housing in the district.

2. Council Tax Increase

The District Council is in the third year of a medium term financial strategy which should deliver savings of over £2 million by 2015. This requires the council to reduce administration costs, increase some fees and freeze or defer recruitment to vacant posts. The success of the plan means the authority will not be proposing any new cuts to services or funding for the next financial year.

In order to ensure the budget is balanced, Councillors are proposing a Council Tax increase of 2% which equates to an increase of 5p per week for the average band D property, or £2.79 over the whole year.

The recommendation will go to full Council later this February.

3. East Cambridgeshire Local Plan

The local plan is a blueprint for the future growth of East Cambridgeshire up to 2031. The Local Plan looks at how much, where and when development should take place. It seeks to ensure development in the district is 'sustainable' by meeting the needs of the area.

The Local Plan will replace the 'East Cambridgeshire Core Strategy (2009)' and will be the main basis for making decisions on planning applications. The Draft Plan proposes the District Council will:

Provide for the delivery of 8500-9500 new homes

Maximise opportunities for jobs growth with the aim of achieving a minimum of 9200 additional jobs

Make available at least 172.27 ha of employment land for business uses

Make provision for at least an additional 1984m² of convenience and 6373m² of comparison retail floor space



4. BT Phone Book

In 2007 BT changed the residents of the Swaffhams ward from the Cambridge to the Bury St Edmunds phone book.

As this was not suitable for many people within our ward I arranged for BT to supply a Cambridge area phone book free of charge to any of their subscribers in the CB25 0 area.

I have recently established that this arrangement is still in place.

Any BT customers in the CB25 0 area can ring 0800 833 400 to obtain their free book.

Allen Alderson



**From our Local County Councillor
David Brown**

January has seen numerous meetings at the County Council.

Cabinet met on the 15th. Amongst the items discussed was a decision to pull out of the proposed business rates pooling system with other authorities in the County on the grounds that the figures did not stack up to the benefit of Cambridgeshire. Cabinet also agreed to increase the published admission numbers for a number of primary schools in Huntingdonshire and agreed a new syllabus for religious education for the County.

The Burwell Masterplan Working Party met to consider the results of the recent consultation. Following amendments to housing infill figures and other issues the report was agreed for endorsement by ECDC.

The Neighbourhood Panel met at Bottisham Village College, with much discussion about the requirements for declarations of interest under the new Code of Conduct.

I hosted a meeting of members of the Judiciary in the County to consider how the adoption process can be improved and also to discuss the idea of concurrent planning whereby infants are placed with prospective adoptees at an early stage.

I sat on an assessment panel to consider potential sponsors for a new primary school in Cambridge and also had meetings of the Local Safeguarding Children Board, Schools Forum and the Social Work Improvement Board.

Business Planning took up a considerable time during January. Cabinet met on 29th January to consider the proposals and agreed to propose them to full Council in February. These proposals set a balanced budget for 2013/14. Headline figures include savings of £32 million in the coming year coupled with an increase in Council Tax of 1.99%. The meeting agreed moves to revisit problems associated with the street lighting PFI contract.

David Brown

QUIZ NIGHT

Swaffham Prior Village Hall

7.30 pm ♣ Saturday

2nd March 2012

Tickets: £6 each ♣ To book a table contact

Jenny Brand ☎ (01638) 742161

or

Lynne Rand ☎ (01638) 741960

Jacket Potato Supper ♣ Raffle

Bring your own drinks and glasses

Proceeds in aid of St Mary's Church, Swaffham Prior

Notes from the Parish Council February Meeting

The meeting was chaired by John Covill with 7 Parish Councillors and 2 members of the Public in attendance.

Members' Declaration of Interest for Items on the Agenda + Requests for Dispensations:

Declaration of Interest noted.

Public Participation:

No comments.

Reports:

CCC – Cllr David Brown reported to the meeting.

ECDC – Cllr Allen Alderson reported to the meeting.

Matters Arising from Previous Minutes (*for information only*):

New seats outside Village Hall: The Clerk confirmed that 2 new seats were on order with a delivery time of 3-6 weeks. When received these are to be stored until the weather improves and then installed.

Correspondence for Consideration/Circulation:

ECDC – *Draft Local Plan/Village Vision for Consultation*. It was reported that the consultation would run from 11th February – 25th March. This can be viewed on ECDC's website or a paper copy of the full document is held by the Clerk – *anyone wishing to see this, please contact the Clerk*.

CAPALC – *Localisation of Council Tax Support*. This was noted.

Additional correspondence:

ECDC - Planning Permission for 17 Fairview Grove

ECDC – Lorraine Brown – Buildings of Local Interest. *Details of a project to create a list of Buildings of Local Interest within the Parish. One building already put forward for this listing was The Little Chapel in the Fen – Clerk to follow up with ECDC. "The overall aim of this project is to identify buildings of special architectural or historical interest and offer them a level of protection against undesirable alterations and/or irreplaceable loss."* Paul Latchford agreed to represent the Parish Council and attend a meet at ECDC's Offices.

If anyone would like further details on this project or would like to put forward a building/structure to be considered for inclusion, please contact Paul Latchford or the Clerk.

Repair/Replacement of Gate to Pound:

Following inspection by members it was generally felt that the timber gate itself was sound and in a reasonable condition. It was suggested that this only needed a coat of preservative. The latching post needed replacement and the Clerk was asked to get estimates for this work. The Clerk asked

about the lime wash on the walls and it was agreed that this needed some attention.

Lighting of steps in Churchyard – further details:

The Clerk contacted ECDC's Parks & Open Spaces team who confirmed that they were responsible for the grass cutting in the Churchyard and maintenance of walls but were not responsible for the footpath. Details of solar lighting were provided by ECDC as an option but following discussion by both the PCC and the Parish Council were not considered suitable. The Clerk asked ECDC's Conservation Officer about the possibility of fixing a light to the porch parapet of St Mary's Church and was told that this would require Listed Building Consent. It was concluded that the Parish Council could do no more at this time.

Waste & Recycling – use of wheelie bins:

As proposed at the last meeting, the Clerk had written to John Hill, Chief Executive of ECDC asking for further clarification on the detail of the proposals. A reply was received and it was agreed that this was a very comprehensive response that would enable members to clearly answer questions and queries raised by residents. *Full details of response included separately in the Crier.*

Accounts for Payment: These were agreed. A quarterly audit of the accounts was carried out by Steve Kent-Phillips and he confirmed that the budgets were on target.

Clerk's Reports:

Bin in bus stop: This was reported to ECDC and has now been emptied.

Parish Councillor's Reports:

Wicken Fen Community Liaison Forum: Geoffrey Woollard attended as representative of the Parish Council and gave a report.

Potholes: John Covill told the meeting that the pothole opposite Adventurers Farm had been dealt with very quickly.

Open Question Time:

Further discussion on lighting of steps in Churchyard.

If anyone would like further information on any of the above items, please do not hesitate to contact the Clerk.

The next Parish Council meeting will be on Thursday, 14th March 2013, starting at 7.30pm in the Village Hall. All are welcome to attend.

Karen King – Clerk to the Parish Council. Tel: 742358. Email: karen.king5@btopenworld.com



RE:NEW People #7

If you would like to do something different this Mothering Sunday, why not join us at Bottisham Primary School at 10.30am on Sunday 10th March when we'll be holding a special Kids Club and RE:NEW Café. The children will be making gifts and cards for their mums whilst the adults will be able to enjoy coffee, cake and good conversation, as well as an opportunity to think about the mother-like qualities of God.

This month, as we continue our series on people at RE:NEW, Keith Morrison, who is a member of the leadership team, has agreed to share his story....

I grew up in North London with my mother, father and two brothers in a family with irregular church connections but attended a church primary school. My Godmother was a Sunday school teacher at a nearby church, and I think that due to her prompting and faithfulness in prayer I went along. At the age of 8 I went to a preparatory boarding school in Kent for 3 years, and as much as I disliked being there it was there that I understood the gospel, that Jesus had made it possible for me to have a relationship with the creator God.

The following year I came back to North London, and started secondary school. Whilst there the London City Mission came to the school and by the time they left I realised that I needed to do more than just understand the gospel, I needed to do something about it: So I made a commitment to serve God and did so by asking him to lead me by his spirit as I sought to live by the example of Jesus. Living by his example is the challenge a Christian faces every day, through success and failure, through good times and bad.

I felt called to ordained ministry in the Church of England in 1996 and during that discernment process my first wife was killed in a road accident. These were testing times, but I learned from that whole painful experience that God was with me in my suffering and not the cause of it. I studied theology in 'the other place' and was ordained in 2001. I met Joy when I was a curate in Ipswich where we were also married in 2003, (God is good)! We have two children William (7) and Libby (4).

These experiences and many others have made me the person I am, and that maybe partly why I felt led to be a Hospital chaplain and now a Chaplain at Arthur Rank House Hospice here in Cambridge. I have learnt that even in the darkest of times Christ's light can enter in, and that we are not alone. I try with God's help to live as a witness to that truth.

Services in March

Sun 3rd Mar, 10.30am – RE:NEW The Bigger Picture (School)

Sun 10th Mar, 10.30am – Mothers' Day RE:NEW Café & Kids Club (School)

Sun 10th Mar, 6.20pm – Traditional Service (Lode Chapel)

Sun 17th Mar, 10.30am – RE:NEW The Bigger Picture (School)

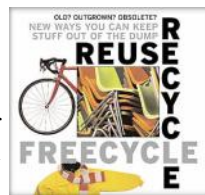
Sun 17th Mar, 5.30pm – Contemplative Service (Lode Chapel)

Sun 24th Mar, 10.30am – RE:NEW The Bigger Picture (School)

Sun 24th Mar, 6.20pm – Traditional Service (Great Wilbraham Chapel)

Simon Goddard

FREecycle



If you have any offers or wants, please contact me by the 14th of each month: jun.thompson@tiscali.co.uk, or c813362, or drop a note through 23 Longmeadow. Everything is free and nothing is expected in return. Please can you contact the offers after the 1st of the month to make it a little fairer.

Offers

2 bird cages: 1 large enough for a cockatiel, 1 smaller cage suitable for a budgie. Toys and food included. Monica c811720

Dark wood traditional-looking coat and hat stand (approx. 6ft tall) – needs a little glue for a wobbly bit. Jun c813362

7ft 3-seat maroon settee (oldish but very good and comfy); can conservatory/patio 2-seat settee and 2 arm-chairs. Alfred c812082

25 videos in very good condition on events encountered by the Royal Navy, Army and Royal Air Force covering the following

topics: Dunkirk, Midway, D Day, Battle of Britain, BBC Secret War, Resistance, Code Breaking, Blitz, Home Front, Lord Mountbatten, Churchill's War, and the Falklands War.

There are also several videos on The Story of and The Art of Bowls. Lis, c811233

Plain, dark brown (Dralon-type) headboard to fit king size bed. Has only been used beneath an upholstered cover, so is virtually new.

Come and have look. Margaret/Peter n744327

Wanted

Your old light fittings, brown bakelite switches, iron conduit and switches, bulb holders and holders. Sheets and bits of bakelite. Postcard rack (carousel if possible). George 07895064727.

Music stand, metronome, guitar tuner. Jun c813362

Any photographic/darkroom equipment, from cameras to chemicals (I'm a beginner wanting to learn about film photography and development); working flatbed scanner. Mark c813919

Dear Friends,

I wonder what emotion and memories the word discipline elicits when you hear it? It might remind you of school days; uniform checks, pupils made to stand outside the classroom door, those who were sent to see the head-teacher. Or perhaps the word discipline brings to mind a time in the uniformed services or at work where rules were very clear and expectations were high. Sometimes



our feeling about discipline is that it is imposed from outside and sometimes we recognise that we place ourselves under discipline when we join an organisation and accept the standards of behaviour that are part of that organisation. For many people discipline is a area of their lives where they have mixed feelings, a love-hate relationship. They recognise its value but it is not always welcome.

Lent is the season when the Christian community is encouraged to think again about discipline and its place in their faith. When you read this we will be several weeks into the great Fast of Lent. In its simplest form Christians stopped eating meat and rich foods or drinking wine during Lent. They spent more time in prayer and reading to deepen their relationship with God. Just as an athlete accepts a lifestyle which will help them to remain fit and will give them time to train so Christians accepted a discipline which might help them to stay spiritually fit. In recent years there has been a shift away from the idea of giving up rich foods and drinking wine; fasting in that sense was seen by some to be too negative. The positive way to be disciplined was to take up something and commit to doing it whether it be reading and prayer, service to others or becoming better acquainted with the work of a charity and the people it supports.

The interesting thing for me is that children at school, whether they have a faith or not, are surprisingly keen to keep Lent. It seems that they are interested in taking on a personal discipline for a time, not because anyone else is enforcing it or requiring it but because they want to do it for themselves. They also have interesting ideas about where they might need to exercise discipline! In the past children have given up chocolate, crisps, McDonalds meals, fighting with their brother or sister and playing on an X-box for Lent. The important thing about this discipline is that no-one is policing it or enforcing it other than themselves. It would be very easy for a child to think it doesn't really matter and give up or cheat but many don't. It's as if children recognise the importance of taking control of an aspect of their lives. They seem to welcome the opportunity to wrestle with themselves. Maybe the Lenten theme of discipline and managing internal struggles is a skill which we can all benefit from taking up and practising in some small way. We can certainly learn a lot about ourselves and the things that exercise power over us and maybe this is an area where children have something to teach adults.

Sue Giles

Services in March

Sunday 3 March, Third Sunday of Lent

11am Matins

Sunday 10 March, Mothering Sunday

11am Family Service, with a sketch by the children and
flowers for all ladies!

Sunday 17 March, Fifth Sunday of Lent

11am Holy Communion (CW1T)

Sunday 24 March, Palm Sunday

10am Benefice Service Holy Communion, Holy Trinity,
Bottisham

Thursday 28 March, Maundy Thursday

5pm Holy Communion, St Mary's, Quay

Friday 29 March Good Friday

10am Children's Craft Workshop, followed by All Age Service, Swaffham Bulbeck

10.30am Open Air Service, The Triangle, Bottisham,
followed by refreshments in Holy Trinity

Sunday 31 March Easter Sunday

11am Holy Communion (CW1T) followed by Easter Egg
hunt

Dates for Your Diary March 2013

Sat	2	Quiz Night, 7.30pm. VH
Sun	10	Crier Copy Deadline
Thu	14	PV Meeting, 7.30pm, VH
Fri	15	Bulbeck Quiz Night, 7.30pm, School Hall
Mon	18	WI AGM, 7.30, VH
Tue	19	Village Gardeners, VH, 8pm Mobile Library, Cage Hill 2.45-3.15pm Chapel 3.20pm-4.00pm 3rd Tues
Thu	21	Mothers' Union, Lode Cahpel, 2.30pm
Sat	23	Moveable Feast, 7pm

Club	Contact	Tel.	Date	Time	Place
FOSPS	Clare Freeman	741316	2 nd Mon of Term	8pm	Village School
Baby & Toddlers	Kelly Mead	741069	Fri	9:30-11:30am	Village Hall
Cubs	Tim Doe	743656	Weds (term)	6:00-7:30pm	Village School
Reading Group	Brenda Wilson	743937	1 st Weds of month	8:00pm	(See Crier)
Scouts	Tim Doe	743656	Weds (term)	6:15-7:45pm	Village School
Village Gardeners	Margaret Joyce	744390	3 rd Tues of month	8:00pm	Village Hall
WI	Pat Cook	742224	3 rd Mon of month	7.30 pm	Village Hall
Youth Club	Alan Badcock	742228	Tues	7-8:30pm	Youth Club Hut
			Thurs	7-10:00pm	

**Village
Clubs
&
Societies**