



The Swaffham Crier

Volume XXXVI Number 5

May 2012



Editorial

Many thanks to all those who've sent best wishes to Caroline for a speedy recovery, offered help, etc. As this again somewhat minimalist edition of the *Crier* indicates, she's not yet back in charge but I **very**

much hope that she will be by next month!

Meanwhile, like last month, whilst the editorial input may be reduced, we've still got an excellent and interesting set of contributions and lots going on.

First it's May so it must be Reach Fair and, as the announcement on page 7 explains, it's a slightly earlier start as far as the mayoral appearance in Swaffham Prior goes.

We're also nearing the time for the Queen's Jubilee celebrations but risk having no specific village event to mark this, though the Village Feast at least is likely to coincide. If you're interested in helping to organise something, there is still time, see page 3. On the same page there are details of a midsummer party and open gardens.

Also active and looking for help are the Scouts, page 15.

Looking back over the past month there's been plenty happening including an historic event: our own Penny Walkinshaw's installation as High Sheriff of Cambridgeshire. I

was expecting some written copy but the pictures we have from Janet Willmott, page 8, are an excellent record in themselves.

Two other events which I can personally vouch for as great successes were the Village Quiz and the production of simnel cakes for Easter. And, according to the aforementioned Janet, there might even be Christmas cakes too.

Looking further back, John Norris, page 12, remembers the history of the village's droves and Alastair Everitt, page 5, remembers the time when he first came to the village.

One of the victims of my not checking that I had all the copy I should last month was Hannah Curtis's Village School Report but this is remedied this month on page 20. Among the things it covers is a theme from last month: crime, in this case the investigation of a particularly dastardly theft!

James Matheson

Cover Picture: *Cornish Narcissi* by Frank Hopkirk



Letters to the Editors



Dear Editors,

Cakes

Many thanks go to all the families, not all from Swaffham Prior, who bought a homemade Simnel cake to celebrate either Mothering Sunday or Easter. I was kept busy in the kitchen with all the orders and have handed over £72.00 profit to St. Mary's Church. I have heard mutterings about Christmas cakes!!! We'll see - watch this space as they say.

Janet Willmott

Dear Editors,

Parish Council Report

Having spoken to the Clerk and the Chair of the Parish Council, there is no recollection of a comment in the March PC meeting that I may be persecuting anybody. One of those who was present suggests that the reporter may have misremembered a comment to the effect that, in addressing the parking issue at the top of Fairview Grove, they (the PC) would not want those concerned to feel got at in the way the PC responds.

Mark Lewinski

Dear Friends,

A Passion for Horses

Hi! My name is Clare Jane. I live locally and have always had a passion for horses. Turning 46 (aahh!) two birthdays ago I felt an overwhelming desire to pursue my dream – a horse of my own.

A miracle happened – Hugh Callacher, from The Missing Sock (TMS). He said I could keep one for free in the paddock behind his delightful venue... and now that has turned to two, as my 13 year old daughter Emily has also caught the bug!

My dream had begun! I then brought a horse drawn carriage and again, with the very kind help of a welder friend and a beautiful craftsman, we transformed it! I now deeply wish to use it to take those being cared for at the East Anglian Children's Hospice, and their families, out for joy rides into the countryside; and also for the TMS community. I want to give something back as I've been so very lucky. To make this possible I am holding a fun fundraising event on **Saturday 19th May from 2012 at The Missing Sock, Stow-cum-Quy.**

There will be melodic music, a yummy buffet, fine drinks, pony rides, pony and cart rides, and animal petting. Celebrity artist Jacquie Jones will paint quirky portraits for you of your children or animals if you wish. There will also be a raffle featuring one of her amazing pieces of art, as well as fun, games, and an unveiling of the stunning carriage, and more all in the lovely TMS landscaped garden and paddock. We hope to see you there.

Thank you, Clare Jane
(sent via Simon Goddard)

Donations!

Many thanks to Meryl Moore, Elisabeth and Alastair Everitt, and the Parish Council for their very kind recent donations to the *Crier*.



Plans for the Jubilee and Village Feast

The Village Hall Committee was hoping to combine the Village Feast event with the Golden Jubilee celebrations this year. I understand that a meeting was held in the village last month to try and raise a committee to help organise the Golden Jubilee celebrations, but that it was felt that the proximity of half term to the Bank holiday would mean that very few people would attend any celebrations. The Village Hall Committee would still like to try to organise the Village Feast for June 4th, and would like to appeal to anyone who is still interested in making an attempt to celebrate the Jubilee to contact us. If anyone is interested in producing a combined Jubilee & Village Feast event we would like to hear from them, especially if they could contribute any time to help organise or run events on the day.

The Village Hall Committee will hold a meeting on Wednesday May 2nd 8pm at the Village Hall to try and raise a committee - everyone is welcome!

Gareth Maslen

Eds Note: The note about the meeting to which Gareth refers was accidentally left out last month but appears on page 24 this month.

Midsummer Tea Party and Market

For the Midsummer tea Party at St Cyriac's Church on June 16 and 17 we would be grateful for contributions of plants, garden items, books, and bric à brac in its widest sense such as toys.

If you have any available please phone 742974 or 743693

NGS open gardens Swaffham Prior

On Sunday 20th May between 10 and 5

Shadworth House, 45 High Street: garden, modern steam traction engine, refreshments next door at The Red Lion.

AND

The Paddock, 43 Lower End: garden, refreshments of elderflower cordial and cake, bee keeping theme this year.

See 'NGS Yellow Book or web site for further details.

From our Reporter at the Parish Council Meeting

Such is the fame of the SP Parish Council Meetings that a delightful man called James had travelled all the way from Seattle to witness the proceedings. I doubt he was disappointed with the high quality of the debate and the sophistication of the discussions.

It all started smoothly enough and quickly moved on to David's CCC report in which he revealed that CCC bravely had held one of its meetings in Wisbech, where one of the problems was "the extortionate translation costs". He also said that a proposed 10% increase in councillors' allowances had been voted down. This is contrary to what Andrew Gilligan had said, as reported in *The Sunday Telegraph* and *The Crier*. It shows – you just can't trust reporters – unless Gilligan's 'exposure' had influenced the vote.



Allen proudly announced that, following a Halifax survey, East Cambs had come out as "the best rural area in the whole of England", with 93% in general good health, 79% in employment, and an average weekly wage of £707. Some doubted this last figure. Amongst other items Allen expressed dismay about the proposal to increase Hereward/public housing rents from 50—60% to 80% of the private rented sector rents. He had great doubts about the wisdom and fairness.

The meeting was still moving quite smoothly, but this was too much for Geoffrey (GW), who had come armed. He obviously has a thing about parking charges and as 'evidence' he produced a letter from Peter Moakes, Leader of ECDC, which had appeared in the *Ely Weekly News*. In this Moakes had written that the Ely proposed parking charges had been deferred for the time being as they did not take into account the concerns of local residents. When the concerns are resolved parking charges will be introduced as "we cannot afford to continue to take £250,000 a year out of reserves to fund car parking." He listed "refuse collection, housing and public health" as being priorities.

GW expressed his usual astonishment at the figure £250,000 when he claimed there were only four car park attendants. He urged Allen to explain. Allen calmly responded by saying he wished GW had raised this before the meeting as Allen would have produced all the figures which would have saved Geoffrey raising the question. As a starter ECDC has to pay £111,000 rates on all its car parks. Even when car parks are free no exemption is allowed. He suggested GW went on to the ECDC website as nothing was secret.

One might have thought this would have concluded the issue. Not a bit of it. GW pressed on with his conviction that car parking should be free, claiming that the centre of Newmarket had been ruined by it. I'm not sure what he meant but it can't have been a charge of 50 pence for two hours, could it? Charge or not to charge concerned other members, including our Chairman who had been to Oxford for the day and chose to park in the centre rather than using the Park and Ride.

On Wednesday 13th June there is to be a Diamond Jubilee Picnic at Burghley House in Stamford and the PC has been asked to nominate two people (together with one relation, friend etc). GW proposed Eric Day, being the longest serving PC

member and our Clerk Karen. Karen didn't think it appropriate to ask her; GW then suggested the Chairman, who declined because he was busy, and anyway it was his birthday; GW then suggested the Vice-Chairman Peter Hart. Peter said, hold on, these are supposed to be selected from the Parish and not just from the PC and it was good to see the discussion extending beyond just those four walls. Peter also asked whether the decision should be based on longevity of service or on any major contribution in any year.

As Karen had to send in the names by the very next day a number of reserves were also proposed in case the first choice people were unable to go. Karen was going to have a busy time for the rest of the night as she tried to make contact with the list below. I give them in alphabetical order so that few know the order of selection: David Greenfield, Emma Fletcher, Eric Day, John Norris, Kate Child.

Those who do not receive a call can be pretty sure they were not in the top layer. But, they should not be aggrieved. Just consider the number of people throughout the village grinding their teeth wondering why they were not selected, and, anyway, just what was so special about those who had been chosen.

The forthcoming Annual Village Assembly on Wednesday 23 May took up quite a large part of the remaining meeting. The PC, which organises it on behalf of the village, has always had members with mixed feelings about the value of the affair. "Is it compulsory?" "What is the objective?" "Why should the PC have to try to drum up interest and attendance?" "Prior has the best attendance figures of all the surrounding villages." "Why can't we follow Reach and hold it half an hour before the usual PC meeting?" Some were very much in favour of this. "Why don't we change the date or defer?" "Can't do that" said Karen, "it's not on the agenda."

So it was decided to stay with the usual arrangement this year, with the usual reports and the scouts/cubs giving again a wonderful display. Suggestions for interesting topics were invited. Again the PC was not over enthusiastic about supporting Eric Pickles and George Carey in their call for a greater support of English Christian traditions by having short prayers before each meeting. It was suggested that the crowds might be attracted by the recent news that St Cyriac's is being turned into a night club. There was also a request that the design of the new lampposts (probably not installed until 2015) could be shown. Previously the PC had made the decision to have the cheapest one as aesthetically there saw little to choose between them. Some in the public gallery thought that many in the village would like a say on what is a most important part of street furniture. Michael Limb was especially concerned that they should not be like the new ones currently being installed in Quy. "They are galvanised" Michael said. "Galvanised! I didn't know that" said one member.

GW announced that he was moving house – to Soham, which is outside our parish. But he is allowed to remain a member until the next election in 2015. So he will be able to make his invaluable interventions for quite some time. When I first came to Prior I came across Soham my plumber said "Soham? Don't go near Soham. They're all glums in Soham." At the same time someone from Cambridge, hearing I was moving to Prior, said "Reach and Bulbeck are fine, but don't go to Swaffham Prior, they're all hill-billies there." That was all a long time ago.

Churches Conservation Trust
In aid of St Cyriac and Julitta's Church

MIDSUMMER TEA PARTY

BOOKS
BRIC-A-BRAC
PLANTS AND FLOWERS
PAINTINGS – OLD AND NEW
TEA AND COFFEE BAR

**SATURDAY 16th June
& SUNDAY 17th June
11.00am to 5.00pm**

In St Cyriac's Church, Swaffham Prior

Free Entry

Proclamation of Reach Fair on Monday, 7th May, 2012



Some of the residents of Swaffham Prior very kindly stand alongside the road waiting for the Mayoral cars to pass through the village.

This year, the cars will be about ten minutes earlier than usual. We have brought the timing forward as, in the last few years, we have encountered more traffic, particularly as we approach Reach village which has made it a rush to undertake the Proclamation at noon.

FREECYCLE

If you have any offers or wants, please contact me on jun.thompson@tiscali.co.uk, phone on 01223 813362, or drop a note through 23 Longmeadow. Everything is free and nothing is expected in return.



Should you be unsuccessful, please try your offers/wants on <http://freebiefreakz.org> or <http://groups.yahoo.com/group/cambridgefreecycle/>. Please can you contact the offers after the 1st of the month to make it a little fairer.

Offers

- Wallpaper pasting table, rickety but would serve purpose. Susan/ Peter C.811584
- Three large boxes non-metric machine screws 0-BA and (I think) 2-BA and 4-BA. Ian c812691 (evening), c812464 (day)

Wanted

- Do you have any old pillowcases (patterned or plain) that you could donate to Little Lode Monkeys? We would be very pleased if you did! Tessa c812035
- Your old light fittings, brown bakelite switches, iron conduit and switches, bulb holders and holders. Sheets and bits of bakelite. Postcard rack (carousel if possible). George 07895064727.
- Does anyone know of a mobility scooter that is **for sale**? If so, please call Bel, c811070

Penny Walkinshaw's installation as High Sheriff of Cambridgeshire





On the other hand - With a nod to the Dean

(See the Crier, April. p.19)

I can't believe any God would feel
Offended, by **when** we had our meal;
Animal, vegetable, fowl or fish,
Or indeed, any other dish;

If there is an **actual** clause,
A regulation, rule or cause
It might persuade me to defer
Especially if He, really is a Her.

Ophir

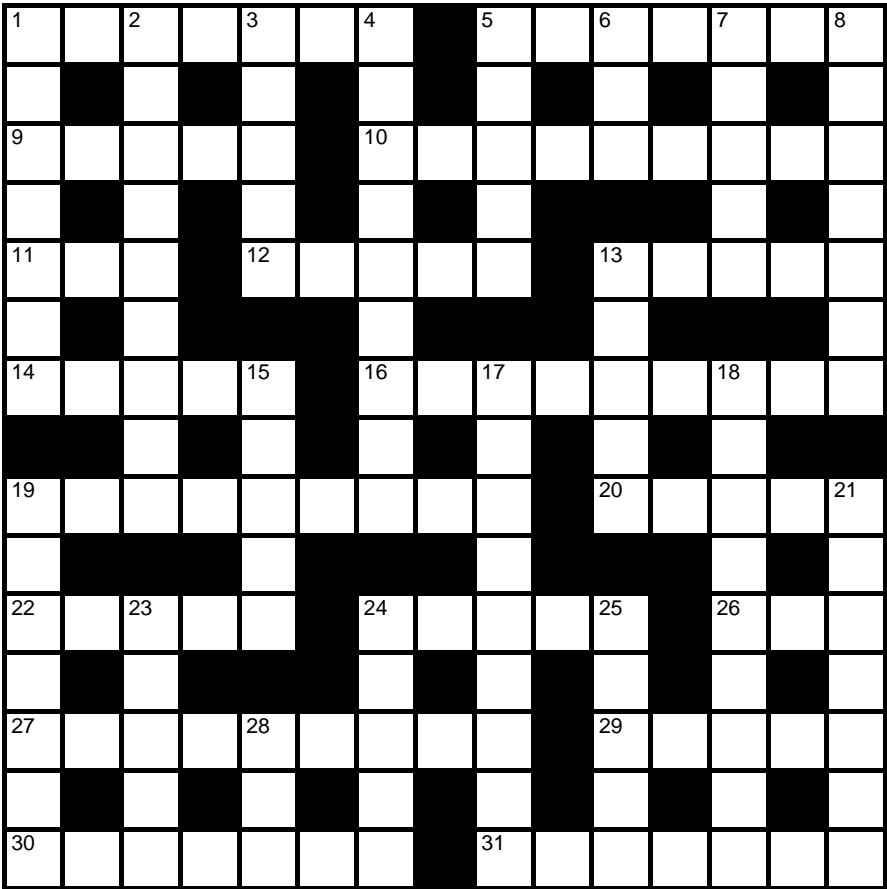
Crossword Number 89

Compiled by

Sponsored by **The Red Lion**

NIBOR

This month's puzzle is a simple cryptic crossword. Send your answers to the editors by 18 May 2012. The first correct solution out of the hat will win a free meal for two at the Red Lion—See the Manager at the pub for full details.



Name:.....		
Address:.....		
.....		Tel:.....

Across

- 1 Worker follows the French inside walls of Brest; it's obvious (7)
- 5 Exhortation leads to quiet speech about record (3,4)
- 9 Fill up with starters of iced melon, buns, uglis, etc. (5)
- 10 Incidentally, enrolled nurse has permission to get a collection of books (2,7)
- 11 Barrel of cocktail for example (3)
- 12 Straighten garment (5)
- 13 Shell church but study first (5)
- 14 Spacious accommodation next to chamber no. 10? (5)
- 16 Bond adversary does a variety of tasks (3-3,3)
- 19 Louts hang about for attack... (9)
- 20 ...So ran back for pinger (5)
- 22 Craft for pets leaving petty cash in a mess (5)
- 24 Nip poster girl (3-2)
- 26 DNA problem too (3)
- 27 African plain is the greenest I churned up (9)
- 29 A zero tolerance engineer coming originally from Mexico (5)
- 30 Pants for unknown faces (1-6)
- 31 So-called normalisation strangely has no ratios (7)

Down

- 1 A follower with bond to the Queen is a flasher (7)
- 2 A Frenchman and large American embrace Open University beginners (9)

- 3 In front of a leader (5)
- 4 Signature tune upsets the gnomes (5,4)
- 5 Embellishes prawn starter in pasties (5)
- 6 Drink up and discharge (3)
- 7 A profit once more (5)
- 8 Thicken mixture in this place perhaps (7)
- 13 Angry hybrid (5)
- 15 You, a saint? More like a fungus! (5)
- 17 It need not change confinement (9)
- 18 Chap with light brown cap first finds US Island (9)
- 19 Donkey's years at sea after Karen leaves on a journey (7)
- 21 Fanatic is mixed up cad and liar (7)
- 23 Vicar erects enclosure for helper (5)
- 24 Squeeze papers (5)
- 25 Song about Polly, Sarah and Linda making starters (5)
- 28 Get bread for Grandma (3)

Solution to crossword no. 88

S	T	O	C	K	I	N	G	F	I	L	L	E	R	S
M	R	I	J	A	I	M	T							
A	N	G	E	L	I	C	N	A	M	I	B	I	A	
L	A	L	H	C	I	R	R							
L	A	N	C	E	E	G	Y	P	T	I	A	N	S	
M	I	R					F			C	A			
I	N	C	U	B	A	T	O	R	C	L	E	A	N	
N			E	R	E	O							D	
D	E	L	V	E		U	S	E	R	N	A	M	E	S
E	O			N					V	E	T			
D	U	N	C	E	S	C	A	P	E	A	G	E	R	
N	G	Y	H	A	R	A	I							
E	V	A	S	I	V	E	D	E	S	K	T	O	P	
S	G	N	O	R	E	O	E							
S	H	O	T	G	U	N	W	E	D	D	I	N	G	S

We congratulate Dainin O'Dowd, the winner of last month's competition, who should collect his prize certificate from the editors. Honourable mentions go to Jenny Brand, Trish Whitehead and Shirley Wilkins.

John Norris Remembers Parish Drove Names

Over the years I have been asked many times where such and such a drove is, indeed what is a drove. The layout of access to the once boggy land to the north of the parish was done much later than the high land, and on many maps no names are published at all.

The droves were “access for owners and occupiers” of the area, and had no function as a through way. They were all one chain wide so as to give plenty of room for avoiding boggy places. It was during the last war that a concrete roadway was put down to help with food production. So until then, the grassy poor tracks served to get any produce out. As it happened most of the produce walked out, as very little of the land was cropped with harvestable crops. It was mostly rough grazing, cattle and sheep.

Alongside this grazing peat digging was established, most of which went off in barges to Cambridge. Have you ever counted the vast number of college chimneys? Coal did, I suppose come eventually, but peat did provide a good amount of heat, is light, available nearby, and clean to handle.

Now as to the names of these drove. If I were any good with a computer, I would provide a map with them all marked on, but as I do not have those skills, we will start at the school entrance. This is on Station Road today, but was originally the start of Whiteway Drove. called this no doubt because of the white clunch put down as a hard surface on the soft peat.

Not very far along this drove we come to Lowbridge Hole. This is where the catch water drain passes under the road. This section has been raised in recent times to avoid a very wet place. We have now arrived at the old railway crossing, and where the next drove joins Whiteway Drove on the right-hand side. This is Driest Drove; it goes nowhere, but is access to the adjacent fields. There used to be many wild flowers growing there, as it was quiet and undisturbed. On the enclosure map, this drove was at one time connected to one long drove leading back to the village and appearing near the bottom of Cage Hill, but is closed now.

Proceeding on, past Adventurers Farm we come to Black Drove. This fenny drove has no hard surface, and leads towards Reach, passing Swan Lake Grain Stores. Here three droves meet; Great Drove leading to the village of Reach, Little Fen Drove leading to Upware, and finally Barston Drove which follows the base of Galley Hill back to Lower End Swaffham Prior. All these droves were a chain wide, and if a concrete surface of ten feet width had been laid down, there were passing places every quarter of a mile.

If you are still with me, I suggest we go back to Whiteway Drove and proceed further into the fen until we come to the right hand corner, passing Slade Farm Drove on the left, now part of the National Trust Fen Cycleway. Straight on is Rail Drove, another dead end, and unsurfaced. On turning the corner we enter Headlake Drove. Here again the ten-foot concrete road down the middle, and grass verges either side, a “chain” wide in total. For the benefit of the younger generation a chain is twenty-two yards or about eighteen meters.

As a change from drove names, most of the fields we have passed also have names, such as Mebblies, Crooked Ground, Double Dolver, Harts Ground, Daniels Cut, The Croyles, and Bush Ground. (a dolver was seven acres). All these names no doubt referred to the owner or occupier in times past.

We left off at Headlake Drove which heads towards the Reach lode, and forms a “cross roads” where it meets Little Fen Drove, and Great Drove, after passing Lords Ground Drove on the left. Great Drove is a straight road leading directly to the river Cam, passing over deep fen areas, and consequently in continuous need of levelling. The cross roads help us to appreciate how low this land is, as it at sea level, ten feet lower than the river Cam.

Rand Drove, and Reach Drove are the two remaining old accesses, and neither have a hard surface, and so give a good idea of the difficulties our forbears had in getting produce out of these fens. Rand Drove is the continuation of Headlake Drove, and heads toward the river Cam, whilst Reach Drove runs at the base of Reach Lode back to the village of Reach.

I trust this may be of some help especially if read with a map handy, Good Luck.

VILLAGE QUIZ NIGHT

We would like to thank, once again, everyone who came to the quiz, it was a fantastic turn out. Congratulations go to the winning team, Quizzimodo.

Once again Andrew stepped in to be our quiz master, we are very grateful to him for giving up his time, thank you. Also thank you to Margaret, Linda,

Shirley and John, who organised things in the kitchen and served the food, much appreciated. Thank you to everyone who donated the prizes for the raffle.

The amount raised for St. Mary's Church was £400. Thank you. The next date to put in your diaries for the quiz in October is the 20th, hope to see you there.

Lynne and Jenny

Music in St Cyriac's

Cambridge Voices, and the Orchestra of the Age of Reason, directed from the keyboard by Ian de Massini, gave a beautiful rendering of Bach's St John Passion on Saturday 7 April. It was an interesting performance. Instead of just one person singing the Evangelist part, every member of the choir shared in the role. The choir also shared all the arias, sung in the original German, while the chorales sung by the audience had been translated into English.

It was a moving experience, enhanced by the setting sun which in turn lit up from the left each musician and singer in turn, and the performance ended just as the sun highlighted the back of Ian de Massini's head in a wonderful glow. A fitting end.

Clara Harbottle

MAGGINIS IN BRECKLAND

The Maggini Quartet are joined by clarinettist Michael Collins to open their new chamber music festival in May 2012

The **Maggini Quartet** has been performing in Norfolk for over twenty-five years. The new chamber music festival, **Magginis in Breckland**, will celebrate the Quartet's special connection with local audiences and bring music of the highest calibre to the local community. The players are looking forward the first festival, which will feature three concerts in beautiful Breckland surroundings.



The concerts will take place on 25th to 27th May 2012. The venues are Swaffham's Regency Assembly Rooms, Clermont House, and the Chapel of Oxburgh Hall, and ticket prices include entry to the stunning private gardens of Clermont House and Oxburgh. Audiences can choose to attend any of the concerts, or purchase a festival pass to attend all three. The Magginis will be joined by Michael Collins, one of the UK's most exciting and celebrated clarinettists, for the Mozart Clarinet Quintet in the delightful Swaffham Regency Assembly Rooms.

The Maggini Quartet has won a string of international awards, performing regularly in major chamber music series in the UK and abroad. The ensemble is well known for pioneering championship of British chamber music and has a catalogue of highly acclaimed recordings for Naxos. This is a rare chance to hear these exceptional players perform three wonderful programmes in the stunning surroundings that Breckland has to offer.

Concert 1: Fri 25th May 2012, 7.30 pm, Clermont House Gardens

Beethoven, John Ireland, Mendelssohn

Tickets: £20/16 (inc. entry to private gardens)

Concert 2: Sat 26th May 2012, 7.30pm, Swaffham Assembly Rooms (with Michael Collins)

Haydn, Mendelssohn, Mozart

Tickets: £20/16

Concert 3: Sunday 27th May 2012, 11.30am

Haydn, Schubert, Beethoven

Tickets: £15/13 (inc. entry to private gardens)

Festival Pass: £50/£40

For more information, interviews, photographs

Kat Tinker: Festival Manager

mqfundmanager@gmail.com – 07952 648361

WWW.MAGGINI.NET



Welcome to the Adventure!

Scouting provides fun and adventure to over 350,000 young people in the UK, helping them to grow in confidence and challenging them to reach their potential. None of this would be possible without the support of our 100,000 adult volunteers.

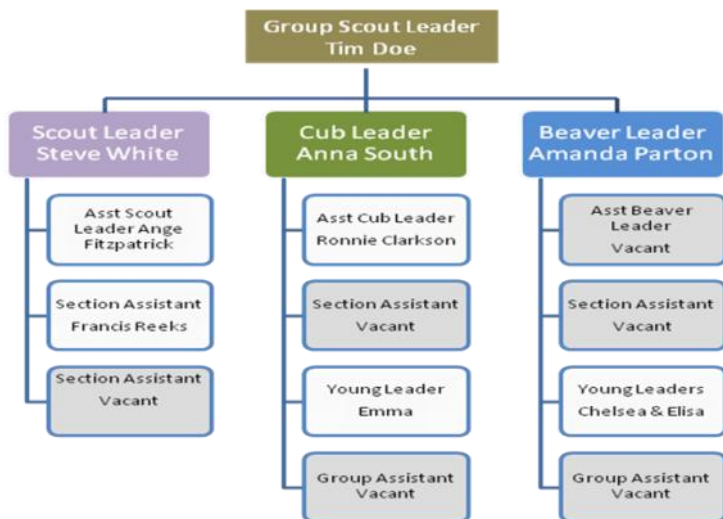
1st Swaffham Prior Scouts is thriving, helping over 50 local children to achieve their full physical, intellectual, social and spiritual potential as individuals, as responsible citizens and as members of their local, national and international communities.

With growing numbers and an expanding programme we need additional adult help in all sections. The aim of this article is to tempt you to consider joining us as a volunteer....you never know you might enjoy yourself!!!

We have a busy and ambitious programme to deliver in 2012/13 including a Summer Camp in Germany next year. Please give it some thought and/or flag it to other people you think might be interested.

We know that many of you have appropriate skills and experience so, please call and let us know if you are interested or if you have any questions. You can talk to our GSL Tim Doe on 07774968625 or feel free to chat to any of the current Leader team you might know.

Steve White



Gang Show

We will be holding a short Scout Gang Show in St Cyriac's Church at 7pm on Saturday 5th May (admission free – donations welcomed on the night).



New local policing model operational - East Cambs

THE FORCE'S new local policing model went operational on April 2.

The structure was developed to help the force reduce its budget while creating a model that enhances operational policing, with a focus on local needs.

The force will be divided into six areas, in line with local authority boundaries and will have uniformed officers, detectives, PCSOs and Specials who will work as one unit.

Chief Supt Andy Hebb, local policing commander, said: "The new local policing model was developed to reduce costs while maintaining the level of service the public receive.

"In fact the number of officers on the frontline will remain the same so in terms of visible officers the public shouldn't see any difference.

"The new local policing structure means a number of functions that were previously delivered at a local level will now be delivered by centrally based teams. This means that local officers will be dedicated to dealing with local problems and specialist teams can focus all of their efforts on issues such as domestic violence, missing people and integrated offender management."

Each of the six districts will be run by an area commander who will be responsible for:

- Initial response to incidents
- The investigation of crimes and incidents
- Neighbourhood policing
- Engagement and partnership arrangements
- Satisfaction
- Anti-social behaviour
- Crime reduction

East Cambridgeshire will be led by Chief Inspector Russ Waterston.

Inspector Paul Ormerod will be Safer Neighbourhoods Manager while Detective Inspector Donna Wass will be dedicated crime manager.

A team of sergeants, PCs and PCSOs will continue to cover the area. The changes will see the number of PCs covering East Cambs increasing from 34 to 42, the number of sergeants will rise by two to 10

Ch Insp Waterston said: "The new structure will increase resources allocated to East Cambridgeshire which means we will be able to proactively target local criminals who are committing local crimes. We are committed to ensuring east Cambridgeshire remains a safe place to live, work and visit."

**GET CLOSER
AND SUPPORT THE FORCE!**

LET THE BELLS RING OUT

They certainly rang out on Friday 31 March to celebrate the induction of Penny Walkinshaw as the new High Sheriff of Cambridgeshire. A top class band of ringers was the order of the day and on 7 March Sharyn Robinson, secretary of the Swaffham Prior Ringers, announced a crack band which came from the towers in Swaffham Bulbeck., Fordham and Fen Ditton.

I'll call the ringers ABCDEF

ON 14 April E ringer dropped out (funeral) and was replaced by P from Burwell.

ON 21 April F dropped out (skiing accident) and was replaced by Q from Exning.

Secretary *"Cripes, this band is getting to be like Trigger's broom from 'Only Fools and Horses'."*

ON 22 April C dropped out (illness) and was replaced by R from Bottisham.

"Well, the sun may be bright but someone is casting dark shadows over our ringers."

ON 26 April A dropped out (virus) and was replaced by S from Isleham.

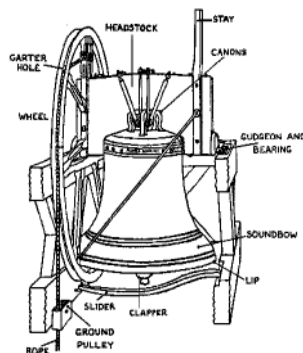
So the final band had changed from

ABCDEF

To SBRDPQ from the towers of Bottisham, Bulbeck, Burwell, Exning and Isleham But it didn't stop there. Initially there was a very good ring urging people into St Mary's for the ceremony. For the post ceremony ringing R went home and was replaced by T from Newmarket.

And the ringers thoroughly enjoyed themselves, striking superbly, and supporting the reputation of the bells as "one of the sweetest peals of bells in the county."

Alastair Everitt



News from Bottisham Medical Practice Patient Participation Group

Your PPG Committee

By the time you read this the Bottisham PPG will have new office holders elected at the AGM on 26th April. We will put their names up on the Practice's website (<http://www.bottishammedicalpractice.nhs.uk>) as soon as possible. They, with the other members of the Committee, are your representatives and are there to help you, so please do not hesitate to contact them if you want to raise an issue.

The new Health and Social Care Act

The die is cast. The Health and Social Care Act is now law. The next key step is in April next year when the Clinical Commissioning Groups will take over for real the

business of commissioning our health services from hospital trusts and other providers. Patient Groups like our own can play only a relatively small role in the new system. But, by working together we may carry more weight. To that end the Chairs of all the PPGs in the CAMHealth group of GP practices intend to meet bi-monthly to compare views and coordinate action.

Cambridgeshire Mental Health Services

Following the consultation on Mental Health Services described in the March edition of the magazine, NHS Cambridgeshire has decided to set up a single 'Advice and Brief Intervention Centre' covering the whole county as a first point of support and advice for mental health patients and GPs; and to set up a Primary Care Mental Health Service. Inpatient wards for mental health patients throughout the county will be provided only in the more modern David Clarke House at Fulbourn Hospital, subject to plans being made to ensure patients, their carers and families have adequate transport. The Cedars Recovery unit and Cobwebs in Cambridge and James Ward at Addenbrooke's Hospital will close.

Changes to the Dispensary at the Bottisham Practice

Dr Elliott writes: "We have made some changes to the Dispensary which we hope will improve the service we provide for you. We have built an extension to the Dispensary with a new serving hatch. There will be a dispenser dedicated to serving at the hatch. She will deal with the collection of medications and prescriptions and any enquiries regarding medications. The other dispensers will then be able to work without interruptions. This should ensure that they can work as efficiently as possible and also reduce the risk of mistakes being made. We know that our dispensers will miss chatting with you all but hope you will find the new system works well."

Bottisham PPG Committee

Bottisham & Burwell Photographic Club

Once again our photographic year is drawing to a close and now is the time when our annual external competition results are available. Our latest competition was entry into the East Anglian Federation of Photographic Societies (EAF) Club Print Championship. This was held locally at Fulbourn in Feb 2012 and 25 clubs entered from across East Anglia. 575 prints were entered and B&BPC were placed 8th – a very pleasing result.

The East Anglian Photographic Federation (EAF) recently presented Andy Hanson, a longstanding committee member of the B&BPC, with an engraved tankard in recognition of his 27 years' service as a member of the EAF executive committee. He was President from 2006 to 2008 and was also the Photographic Alliance Awards Officer from 1994 until retiring from the committee in 2011.

On the 1 May 2012 our speaker for the evening was Andy Hanson MPAGB ARPS APAGB FIPF. Andy lives in Burwell and is one of the founding members of



the Bottisham & Burwell Photographic Club which was formed in 1973. The evening was entitled 'An Evening with Andy – Who?' and he gave a print presentation on many aspects of his photography over 60 years, including sequences, themes and travel images from around the world. Andy also displayed a set of twenty photographs that recently gained him his Fellowship of the Irish Photographic Federation (FIPF).

As always, guests are very welcome to attend the club (fee £2.00 including refreshments). We meet at Lode Chapel CB25 9EW at 7:30 – 9:30 pm

Barry Coles
Publicity Officer



VILLAGE GARDENERS

This month, Joe Sharman, from Monksilver Nurseries, came to talk to us, with some lovely slides about Primroses. He brought with him an amazing variety of the species, which he told us were very promiscuous and hybridised easily – so perhaps not a complete surprise that there were so many.

Three original species, have produced all the cultivars that are grown today and were all recorded centuries ago by plantsmen in this country and abroad. *Primula Vulgaris*, the first, likes damp conditions in summer, grows in the UK and across Western Europe, down to the Mediterranean, North Africa, Turkey and Uzbekistan. It's tough but is rarer than it was. Many varieties are now bred – Doubles, Hose in Hose (one flower inside another), Green Primroses, Albas and sub species such as *Primula Balearica* in Majorca.

Oxlips are the second. They are holding their own and only grow in this country in the driest counties – Essex, Hertfordshire, Bedfordshire and Cambridgeshire. Most of them are in ancient woodland and thankfully largely undisturbed. They're survivors and once again have produced some very colourful hybrids.

Cowslips are the third species. They are increasing and gaining ground. They like it dry and sunny and can be seen more and more on motorway verges. Remember the names "Wanda", "Guinevere" and "Dawn Ansell" as being very good garden plants and as Joe said – great fun to grow, as you never know what you are going to get!

If you are out and about locally, then the best places to see Primroses, are in Reach and Bulbeck cemeteries – before the dreaded mowers move in – and Fulbourn churchyard for Cowslips.

At our next meeting on May 15th, Roy Nunn is giving us a talk on Clematis throughout the year. Everyone is welcome. If anyone is interested in coming to East Ruston Old Vicarage Garden, on 23rd July, then please contact Mary Hart – 741681 or Margaret Joyce – 744390.

Margaret Joyce

Swaffham Prior School News



We have had a very busy time over the past few months and the children and staff have been engaged in a range of activities. With the approach of spring, there was work carried out in the Nature Area to reline the pond and start some planting, in partnership with Wicken Fen. As a school we have participated in the Woodland Trust scheme called 'Jubilee Wood'. The school has been given free hedging plants, which includes a Royal Oak sapling from one of the Royal estates. We are deciding as a school where to plant the oak sapling.

The Circle Choir Festival was held on 23rd February and Swaffham Prior sang 'Let's Twist Again' and a selection of other songs from the 1960s and 1970s. The children were fantastic! Comments made by the Bottisham Village College music teachers included, 'lots of enthusiasm' and 'a nice rhythmic and energetic performance'.

We have enjoyed two more class assemblies last term. Saturn Class presented extracts from stories of Robin Hood and gave speeches on the importance of reading. The speeches were passionate and the children read them with great feeling. They also presented memories of their trip to Burwell House. Mercury class shared with us information about their houses and where they lived, Showed us models of houses made from different materials e.g. bricks and sticks and sang a song about the Big Bad Wolf from 'The Three Little Pigs'. They spoke with confidence and we enjoyed being entertained by their singing.

In March, we all wore something yellow to mark the fact that it was the Children's Liver Disease Foundation Day. There was a mask competition. The school raised £103 which will go towards research and supporting families of children with liver disease. Later in the month we will be raising money for Sport Relief. We have also been collecting stationary for a school in Sri Lanka which was affected by the tsunami.

Science week in March began with the news that two school trophies had been stolen. The children were sworn in as detectives by PCSO Ian Hawkins and used forensic science all week to solve the crime. Mercury Class studied careless footprints left outside, Mars Class analysed finger prints, Neptune Class investigated fibres left at the scene of the crime and Saturn Class tested pens and compared handwriting samples to try and work out who it was. It was found out to be an inside job – Oh, Miss Curtis!

History off the Page visited Foundation/KS1. It was a wonderful day and the children experienced what it was like to live in a big house during the Victorian times. Not only did the children dress up but they participated in role play and made a range of items to take home. They learnt how to write with ink pens, stitch, shave a person with a 'cut throat razor', wash up and make tea fit for the Queen!



KS1 History
off the Page



Team challenge at
Burwell House

Our Easter service was led by Simon Goddard this year. The children performed some beautiful songs and Simon demonstrated some magic in his talk about the Easter message.

We finished the term by celebrating the installation of our new High Sheriff, Penny Walkinshaw. The whole school went to St Mary's Church and waved flags and shouted three cheers. We felt very special as we were the first people to see her leave the church as the new High Sheriff.

This term we are thinking about the Olympic and Paralympic Games. So far the children have made flags and decorated T-shirts, performed an Olympic dance to celebrate 100 days remaining to the Games and brought in photographs of their own Olympic challenges carried out during the Easter holidays. What a busy start!

Hannah Curtis
Head teacher

News from Wicken Fen and Anglesey Abbey

Thanks to the generosity and fund raising efforts of members of the Chelmsford, and Colchester and North Essex National Trust Association's we have been able to purchase two disability tricycles and a tricycle tag bike for our cycle hire fleet. The tricycles are ideally suited for children and adults with physical or learning disabilities. Cycle hire is available at Wicken Fen at weekends and school holidays until the 4 November, 10am-5pm (last hire 3pm). Hire rates for children's/adult bikes are £5/£7 for 2 hours or £10/£14 for the whole day.

Talking of cycling, we're planning a celebration down at Reach Lode Bridge to



unveil the Lodes Way 'portrait bench' on Sunday 20 May at 1pm. Each of the 79 new lottery funded Sustrans Connect2 cycle routes are to have a simple bench with three life sized effigies chosen by local people to represent the history and culture of the local area. Following a poll held last year, the three figures chosen for the Lodes Way bench were an Ice Skater, Victorian Entomologist and Eel Catcher. So please pack a picnic and join us for the un-veiling celebrations.

This year we are looking to increase the range and scope of volunteering opportunities for families at both Wicken Fen and Anglesey Abbey. The first 'Family Muck in Day' as we are calling them is on Saturday 19 May, where we will be working in the Fen Cottage garden at Wicken from 10am – 1pm. All ages are welcome, parents, grandparents, teenagers and toddlers! To help us plan our first 'Muck in' it would be appreciated if you could let Lois Baker, our Community Officer know if you plan to come – please drop Lois a quick e-mail at lois.baker@nationaltrust.org.uk or phone the visitor centre on 01353 720274.

Last month the Trust launched '50 Things to Do Before You're 11½'s, a major initiative to re-connect children with the countryside and nature. The list of 50 things include a range of exciting activities from skimming stones, making grass trumpets to tracking animals and camping out in the wild. You can collect your '50 things' booklet at Wicken Fen or Anglesey Abbey or find out more online at www.nationaltrust.org.uk/50things.

The first cuckoo of spring arrived back at Wicken Fen on 11 April following its long migration flight from Africa. We've lots of exciting events at Wicken to celebrate spring this May:- **Dawn Chorus Walk** – enjoy birdsong at its best with our warden's helping you identify who's singing, Saturday 5 & 12 May, 4.45am £10 includes bacon roll and hot drink; **Spring Walk with the Warden** – join a guided walk with our warden's to discover the advance of spring across the nature reserve and learn how we care for this special wetland, Sunday 13 May at 2pm £6.75 includes tea and cake; **Grazing Animals Walk** – a walk to find out all about Wicken's herds of konik ponies and highland cattle, Saturday 19 May, 10.30am £6.50 adults £3.25 children; **Dusk Chorus Walk** – if your unable to struggle out of bed for a dawn chorus walk then this is the best option for you – join our wardens as Wicken's birds come into roost for the night, Friday 25 May, 7.30pm £6.50 adults £3.25 children. For those feeling creative there's a **Rush Weaving Workshop** on Saturday, 26 May, 10.30am-4.30pm £55 including materials. Advance booking is essential for all events, please call the Wicken Fen Visitor Centre on 01353 720274 for tickets / further information.

Down at Anglesey Abbey we will be celebrating our nations milling heritage on **National Mills Weekend** – Saturday & Sunday 12-13 May, 11am -4pm daily. Historic Lode Mill will be running all weekend with hands on activities for all the family to enjoy. Finally, looking ahead to June, we will be celebrating the Queen's Diamond Jubilee on Monday 4 June with a big picnic on the East Lawn. We will have a big screen showing family entertainment throughout the day- so please bring a picnic and join us for what promises to be a truly Jubilicious day.

Howard Cooper

National Trust –Anglesey Abbey & Wicken Fen

Plant power: parasites and carnivores

As the Garden turns green in late spring with the last of the trees coming into leaf, it is interesting to note those plants that buck the trend, one of which is responsible for the purple blotching staining the groundcover of the Woodland and along the Stream Garden. Tucked at the base of the willows and poplars and along the root channels, you will find dense clusters of sinister-looking, waxy flowers, distinctly hooded, two-lipped and in a lurid violet-purple colour. These belong to the parasitic plant, *Lathraea clandestina*, also known as Purple Toothwort, which has no chlorophyll at all and obtains its nutrients by plugging in to the roots of the host willows and poplars. The lack of chlorophyll accounts for the total lack of green pigment in the plant which has no leaves or stems. After flowering and seed dispersal the plant disappears underground until the following year.



Carnivorous plants show a different nutrient-gathering technique. These plants grow in nitrogen-poor environments and obtain this essential nutrient from insect protein. This month, *Sarracenia* are coming into flower, each long stem topped by beautiful green, pale yellow, sometimes red-flushed nodding flowers the shape of old-fashioned bathcaps! Woven in among the winter orchid display, they are an arresting sight in the Glasshouse Range and their beauty belies the deadly pitchers that are elongating alongside. These specialised leaves are rolled into cone-shapes that collect a reservoir of water into which insects fall, drown and are slowly digested.



The power of plants to kill and to cure, make and mend, bewitch and beware, and always to surprise and intrigue will be the subject of the first Fascination of Plants Day hosted at the Botanic Garden on Saturday 19 May 2012, 10.30am – 4pm. There'll be displays, demos, workshops, trails, meet the experts and hands-on activities for families. Normal Garden admission applies, the event itself is free.

Jolly Jingle Number Five

Here's to the maiden of bashful fifteen;
 Here's to the widow of fifty;
 Here's to the flaunting extravagant quean,
 And here's to the housewife that's thrifty.

Chorus

Let the toast pass,---
 Drink to the lass,
 I'll warrant she'll prove an excuse for the glass.

Richard Brinsley Sheridan

Meeting about Jubilee Celebration

In response to a plea last month in the Crier a group of people met at the Red Lion on 13 February to discuss options for a Swaffham Prior Jubilee celebration. A number of ideas were mooted including a tea party, watching the Buckingham Palace concert on a big screen and also the lighting of a beacon on St Cyriacs as part of the Jubilee festivities. Following the meeting it was agreed that contact would be made with all those who booked a table at the street party last year to measure enthusiasm for an event.

Due to the fact that the Jubilee weekend also coincides with half term, it was soon apparent that most people will be taking advantage of the long weekend and have already made other arrangements. There are also a number of other events happening over the weekend, including Bottisham Village College 75th celebrations on the Saturday and a large family event in Newmarket on the Tuesday. The unanimous decision was that there are unlikely to be sufficient numbers on one particular day to support a Swaffham Prior village event that could equal the success of last year's street party. We do however look forward to seeing lots of bunting around the village and know that many of you will be celebrating in many different ways with friends and family.

Eds note: This report was accidentally left out last month - apologies.



Anglesey Group Mothers' Union

At our last meeting Jeff Prosser talked to us about 'Water Aid' in his capacity as a volunteer speaker for this charity.

He was emphasising how important water is to the whole world. For instance, a person could survive for between 8/10 weeks without food - but only 8/10 days without water. Jeff also indicated that between now and the year 2050, with the growing population and general development, there will be a 55% increase in demand for water.

'Water Aid' do a tremendous amount of work overseas to improve access to safe water by digging wells and training two or three people in each location to enable them to maintain the pumps themselves. They also provide composting toilets for better sanitation and hygiene - thereby transforming the daily struggle for life in these third world countries.

Nearer to home, Jeff was stressing the importance of water in our daily lives and how we need to be much more aware of using it properly - without so much waste. For instance, at the present time 80% of water in the world is wasted!! Jeff's talk is particularly appropriate at this time of drought conditions and the imminent hose pipe ban, and we should certainly do all we can to conserve such an important element to our existence.

Anne Phoenix

Notes from Parish Council Meeting – 12th April 2012

The meeting was chaired by John Covill with 4 Parish Councillors and 4 members of the Public in attendance.

Public Participation:

No items raised.

Reports:

CCC – Cllr David Brown reported to the meeting.

ECDC – Cllr Allen Alderson reported to the meeting.

Correspondence for Consideration/Circulation:

CCC - Mark Lloyd, Clerk to the Cambridgeshire Lieutenancy - *HM Queen's Diamond Jubilee Picnic at Burghley House, Stamford, Wednesday 13 June 2012 (nominations)*. The Clerk was to contact those nominated to check on their availability and whether they would like to attend.

CCC-Passenger Transport – *Bus Subsidies, what you might like to know*. Further details in the Crier.

CCC – Mark Lloyd – *Integrated Plan 2012-13 – Message for Town and Parish Councils*. This was noted.

ECDC – *A Community Land Trust for Your Village*: The Clerk reported; “A Community Land Trust is a non-profit, community-based organisation run by volunteers that develops housing (or other assets) at permanently affordable levels for long-term community benefit. For affordable housing, CLTs can offer an alternative to traditional Housing Association schemes, and enable a local community to have continuing influence over the allocation and management of homes.” Due to the previous consultations through Cambridgeshire ACRE and ECDC's ‘Village Vision’ it was agreed not to take this forward at this time.

Matters Arising from Previous Minutes (for information only):

Parking at Fairview Grove: The Clerk reported that she had contacted Sanctuary Hereward about the possibility of providing parking facilities and was waiting on a reply.

National Trust Consultation – Connecting extensive grazing areas at Wicken Fen, Harrisons Drove:

Summary from NT: “*In order to expand the grazing range of our animals we would like to link together existing grazing areas on Adventurer's Fen and Harrison's Farm either side of Harrison's Drove. The eastern part of Harrison's Drove is a public highway and the western part is a public bridleway.*

The Wicken Team would now like to gather comments from local communities, different users and local stakeholders on the range of potential crossings that are presently being considered. These crossing ideas have been developed over the last 12 months by NT staff taking guidance and ideas from our User Group and key

stakeholders.”

Following discussion it was agreed to send a reply to the National Trust expressing concerns about the option to use cattle grids.

Annual Village Assembly: Following discussion it was suggested that a brief Annual Village Assembly be held prior to the next Parish Council meeting on 10th May starting at 7pm – further information to be displayed on village notice board. The Clerk was asked to confirm details on the requirement for an Annual Parish Meeting (AVA). There was also discussion about a more informal approach to AVA’s in future years.

Accounts for Payment: These were agreed.

Clerk’s Report:

Allotments: Request received for an allotment. *A new one to be marked out on ‘lower allotment’ site.*

Parish Councillors’ Reports:

Geoffrey Woollard told members that he was moving to Soham but would continue as Parish Councillor for Swaffham Prior for the remainder of his term.

Open Question Time:

Alastair Everitt asked if the Parish Council would be considering the issue of prayers before meetings.

David Greenfield said he supported the idea of a more informal approach to the Annual Village Assembly where all groups and organisations in the village could come together. Alastair Everitt agreed suggesting that refreshments might be provided.

David Greenfield said he was pleased that Geoffrey Woollard was continuing as Parish Councillor for Swaffham Prior following his move to Soham. Everyone agreed.

Michael Limb asked for further detail on the possible changes to street lighting in the village.

If anyone would like further information on any of the above items, please do not hesitate to contact the Clerk.

The next Parish Council meeting will be on Thursday, 10th May 2012, starting at 7.30pm in the Village Hall. *All are welcome to attend.*

Karen King – Clerk to the Parish Council. Tel: 742358. Email: karen.king5@btopenworld.com

BON MOT NUMBER TWENTY TWO

“He that spareth the rod hateth his son.”

Proverbs 13:24

This month I want to tell you about two ways that we're trying to put RE:NEW's core values into practice...

Community Ceilidh – Saturday 12th May

At the beginning of May a book I've co-authored is being published – it's entitled 'Big Hearted' and includes snippets of the RE:NEW story (available from Amazon or from www.gileadbookspublishing.com). To celebrate this event we've organised a 'Community Ceilidh' at Bottisham Primary School – and we're hoping it will be a fun evening for all of the family. It's free entry, but there will be a paid bar which is being provided by the school PTA (who will receive the proceeds). The music is being provided by 'The Cyriacs' from Swaffham Prior, and we hope that young and old alike will be able to jig along. And don't worry if you've got two left feet... that's half the fun at an event like this!

We'd like to have some idea of numbers so that we can appropriately stock the bar, so please RSVP in one of the following ways:

By phone: call me on (01223) 812881

By email: simon.goddard@re-new.me.uk

Facebook: search for RE:NEW, respond through the events page

Web: Use the 'contact us' page on www.re-new.me.uk

Twitter: direct message me @renewchurch

Text: send a message to 07930 148094

Pentecost Praise – 10am, Sunday 27th May

You will remember that one of the core values of RE:NEW is being 'ecumenical'. We've been praying for the local parish churches as they go through the process of appointing a new vicar, but being in an interregnum hasn't stopped us working together. Indeed, we've enjoyed a number of shared events recently, and the next one is on Pentecost Sunday – the day we remember the 'birth of the church'. All of the local congregations will be joining together at St. James' in Lode to celebrate the day, and we hope that other local Christians, who perhaps travel into Cambridge or Newmarket to worship, may also choose to be part of this special service.

Simon Goddard

Services in May

Sun 6th May, 10.30am – RE:NEW The Bigger Picture (School)

Sun 6th May, 5.30pm – Sacred Space Contemplation (Lode Chapel)

Sun 13th May, 10.30am – RE:NEW Café and Kids Club (School)

Sun 13th May, 6.20pm – Traditional Service (Lode Chapel)

Sun 20th May, 10.30am – RE:NEW The Bigger Picture (School)

Sun 27th May, 10.00am – Pentecost Praise (St. James, Lode)

Sun 22nd Apr, 6.20pm – Traditional Service (Great Wilbraham Chapel)

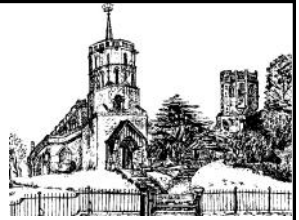
For more information please contact: Rev. Simon Goddard.

Tel: (01223) 812881

Email: simon.goddard@re-new.me.uk

Web: www.lodechapel.org.uk and www.re-new.me.uk

St Mary's Services for May



Sunday 6th	Holy Communion	11.00 am	
Sunday 13th	Rogation Service (followed by lunch - please book 01638 734983)	12.00 am	Baldwin Manor
Thursday 17th	Ascension Day Communion	7.30 pm	St Cyriac's
Sunday 20th	Matins	11.00 am	
Sunday 27th	Benefice Service	10.00 am	Lode

Roman Catholic Church, Newmarket Parish

Masses: Newmarket: Sat 1830; Sun 1030;
Kirtling: Sun 0900;
In Bottisham Parish Church, Sun 0900 (Served from Cambridge).

Club	Contact	Tel.	Date	Time	Place
FOSPS	Clare Freeman	741316	2nd Mon of Term	8pm	Village School
Baby & Toddlers	Jessica Shakeshaft	744266	Fri	9:30-11:30am	Village Hall
Cubs	Tim Doe	743656	Weds (term)	6:00-7:30pm	Village School
Reading Group	Brenda Wilson	743937	1st Weds of month	8:00pm	(See Crier)
Scouts	Tim Doe	743656	Weds (term)	6:15-7:45pm	Village School
Village Gardeners	Margaret Joyce	744390	3rd Tues of month	8:00pm	Village Hall
WI	Pat Cook	742224	3rd Mon of month	7.30 pm	Village Hall
Youth Club	Alan Badcock	742228	Tues	7-8:30pm	Youth Club Hut
			Thurs	7-10:00pm	

**Village
Clubs
&
Societies**