



The Swaffham Crier

Volume XXXIV Number 10

October 2010



Editorial

READERS MAY HAVE NOTICED that competition from our fellow magazines along the Spring Line might have *hotted up* recently, with the excellent *Bulbeck Beacon* and stunning *Within Reach* now rivalling *Time Magazine*. But one thing other magazines are going to find it difficult to measure up on is the **Crier** crossword.

This will certainly surpass *Time Magazine's* (they don't do cryptic in the US). Crossword manager Robin Scovill has been ill recently, but we're very glad to say he is now on the mend. We'd like to wish him all the very best for a speedy recovery.

Despite the **Crier's** gloomy prognostications, if not to say *outright condemnation*, we have to admit (spit it out, spit it out!) that St Cyriac's modifications look quite nice really! The revamped building greatly contributed to the success of our recent German visit masterminded by Ober Planner Dee Noyes (many congratulations Dee!) and where we hear there are already return visits to Germany planned.



Cover Picture: *The Church Railings* by Joannie Webb

The Dog Show was a great success, with all dogs immaculately behaved save *one*, it not being difficult to discern *which* one (see page 10). Hmm. Meanwhile, *Our Reporter* makes interesting reading for their walkers this month. PC Chaitrman John Covill has spotted as Osprey, so now we can all try our hand at Osprey-spotting (big bird, should look like picture below), and there are some well-justified comments about the Station Road footpath. Yes, it may very well be that there are no visible footprints along the effectively still blocked portion, closer examination would reveal *paw*-prints, the other half of the partnership having bailed out over the 5-barred gate.

Finatralaally, at last! Our own Choir!! Richard Hinit will be Choir Master and I myself will give it one go at least—surely there are lots of tunes arranged for the lowish voice with a range of let's say three notes?

Caroline Matheson

Regulars

Letters	2
Our Reporter	4
WI	26
Mothers' Union	27
CROSSWORD	28
Wicken Fen News	30
Crime Report	32
PC Report	33
Simon Goddard	36
Church Services	37-38
Freecycle	37
David Lewis	38
Bon Mot	23

News, Views & Reviews

Red Lion News	3
Gypsy Site Update	7
Dog Show	10
Moveable Feast	12
Snake Hall Bus Stop	12
RASP News	13
Tender & Passionate	13
English are Best	14
The Clock Saga	16
Scout Shelter	17
The German Visit	20
Burwell Flu Vaccinations	22
Anne Ivy Fuller	24
Lode Mill	23, 32
Fresh Fish Stall	8

What's On

Nearly New Sale	6
SP Choir	3
Harvest Supper	8
Quiz Night	9
Lode Bookfest	14
Christmas Market	14
Neighbourhood Panel	15
SB Bonfire Party	19
BVC Xmas Market	21
Anglesey Abbey	22
Bottisham Art Group	31
Let's Dance	35
BVC Saturday Workshops	39

Found

Dead cat	17
----------	----



Letters to the Editors



Dear Editors,

Reach Lode Bridge

I was disappointed not to be able to point out the new Reach Lode bridge to our visiting German guests as we drove to Upware a few weeks back. This was because it was not visible from the nearest road across two fields and behind some scrubby trees and hedges. How does this square with the somewhat hysterical arguments prior to construction from those on the Parish Council and its reporter who opposed the bridge, that it would 'look huge in the landscape' ? Would they like to comment now - or would they rather it was blown up?

Mark Lewinski

PS. Who's organising the celebratory *Swaffham Prior walk to Wicken*, then?
You are. Eds

Dear Editors,

Lady Edith Anne Dawson/Douglas Pennant

I inherited as a child a number of personal articles that formerly belonged to Lady Edith Windham, of Dartrey Castle, Co. Monaghan, Ireland. I believe Lady Windham lived at Swaffham Prior before & after WWII with her husband Charles Ashe-Windham. She was previously known as Lady Edith Anne Dawson & Lady Edith Douglas-Pennant before moving to Swaffham Prior. I have some photographs of her at one of her mansions from the period she was living at Swaffham Prior, but I am unsure if this building is still standing.

I am trying to locate anyone who may have known her first hand, or may know exactly which property she lived at or even have photographs. She lived to a great old age in Ireland after the war, but as her Irish castle was torn down & all her estates sold, I cannot find much on her existence in Swaffham Prior, and so I guess I am trying to ascertain as much as I can about her; before people who may have known her, leave this world; for want of a better phrase.

I would be very grateful if some of your readers might be able to assist,

Ben Mc Cabe

Dear Editors,

A Big Thank You

On the 16th August, we handed over to East Cambridgeshire District Council the following: -

717 Site Allocations (Options) Public Consultation Questionnaires

542 Sustainability Appraisal: Site Allocations Options Questionnaires

In addition we believe there were **100** Completed Online. I'd like to thank on behalf of the Committee all the individual helpers, without who we'd never achieved such an incredible result..

David Greenfield

SP ECDC LDF Steering Committee Chairman

Join the choir at Swaffham Prior!



Do you enjoy singing? We are looking for singers of all ages to form a new choir at St Mary's Church. Auditions are not required.

Rehearsals will be from Sunday 31 October at 4:30pm in church. Bring your voice!

For more information email priorchoir@yahoo.co.uk or call Richard Hinit on 01353 624615.

The Red Lion Is Under New Management!

Steve and Karen are ready and waiting to give you a warm and friendly welcome with an excellent new menu and a good selection of fine ales.

Fresh homemade food served daily from 12-12.30 and 6-9pm.

Now including Sunday evenings as well as lunch times but no food available on a Thursday.

*Also please note that on October 1st, 2nd, 3rd and 4th there will be no food being served.

From our Reporter at the Parish Council Meeting

It was the start of the new term after the August break. One member even said he really missed the monthly PC meetings. Fancy that!

Peter Hart, our Footpath General, announced that the footpath from the Village Hall car park through to Station Road is now fully open. Well, it is – up to a point. There is now a magnificent six foot wide path down and round the school playing field which then branches off through a tiny charming glade leading to the field. At the field the problems begin.



The grass is eighteen inches high (not suitable for wet weather) and there was no evidence that anyone had ever walked through it. In the fifty yard distance were hedges and a clump of green under which I hoped would be a kissing gate. There was and it still worked. Passing through the gate I met a problem which we've endured for the last twenty years. The field had been ploughed right up to the edge leaving walkers having to struggle along a slope. Fifteen years ago James Willmott said he would try to restrain the enthusiasm of his ploughman and persuade him to leave a little flat ground. But he never did then and doesn't now. All that walkers require at this point of the public footpath is a patch of about eight square metres of flat land. Surely this will not affect the viability of the farm.

But the difficulties were not over yet. I knew there should be a gap in the hedge leading onto Station Road. So I struggled along the slope until I came across a small hole, next to which was a stake with an official footpath marker. At last I had made it, though anyone who had not walked the path in the past would not have done. Then came a pleasant surprise. The hedge along the Station Road footpath had been trimmed beautifully and for once it is now possible to walk two abreast. Whoever the contractor is he should be praised not only for the trimming work but also for having cleared up the debris so well. So, with just a little more to be done, and this most pleasant footpath will be fully open. All thanks to Peter.

A lively discussion developed about 'Great Fen Drove'. "Do you mean 'Cherry Tree Drove'?" "I think you mean 'Long Drove'". "No, you've got it wrong – it's High Fen Drove". "It's generally known as 'Great Fen Drove'". Those that know about these things at last agreed that perhaps this drove did have four names. Those who knew nothing were nonplussed, and probably ended up knowing little more.

All this arose because Geoffrey Woollard raised yet again one of his complaints. This is the condition of 'Great Fen Drove', or whatever. It has always been so bumpy that cars can only drive at about 10-15mph. Geoffrey has consistently over the last few years maintained that the bumps are highly dangerous. And he is right - if anyone attempts to drive fast. But after the first dip/bump everyone slows down. At last Geoffrey's tenacity has received its reward. Not long after the PC meeting the contractors went down there and all the bumps and dips have been levelled out. It is a real joy and cars can now travel at 30-40 mph quite safely. Of course there will be some hot heads who will go faster.

With a merry twinkle in his eye John Covill reported that one side of the new



Reach Lode Bridge on its opening day. Is this why it's already sinking?

Reach Bridge is sinking. Yet another triumph for Nuttalls, also the contractors for the unfinished Guided Bus. He also reported having seen an Osprey – a rare sight in these parts. The planning application for the land adjacent to 15 Cage Hill has been withdrawn. There has been a complaint about the position of the Dog Poo Bin at the top of Fairview Drove which blocks the view of the traffic if you are driving a van. How successful have these Dog Poo Bins been? Has anyone looked inside to check?

We heard the latest about the proposed traveller site in Heath Road. Credit was given to the Committee which had dug out the facts with enormous tenacity (changed websites, documents hard to obtain, hidden information, etc) and I have no doubt that their efforts quadrupled the number of objections from the village. Armed with all this it was reported that Alan Alderson gave a powerful presentation at an ECDC meeting discussing the issue. A decision will be taken at a meeting in November. Anyone will be able to attend providing the date is publicised. David Brown also played his part by pointing out that the ECDC assumption about the number of vacant school places was incorrect.

Alan reported that Ely is to receive some substantial government funding. I hope, in these hard times, that I noted down the figures correctly. £180,000, £90,000, and £215,000. This is mainly for “capital funding for Ely projects” including the leisure centre and the market.

Some money will also be designated for tidying up the area facing the station approach so that visitors coming by rail will be greeted by a vision which befits “a great cathedral city”. This must be the latest official catch phrase because Alan used it several times with some pride. He also mentioned “a tree lined avenue” as being a more acceptable area approach for “a great cathedral city”.

“Hold on”, said Chairman John Covill, “rather than fiddling with a tree lined avenue, why don’t you do something about the bridge?” Then everyone put in their

twopennyworth. "A bypass is needed but times are now hard." "That bridge has been a problem for the last fifty years." "Ambulances have to join the lorry queue to go through the crossing and thereby are very often late." "It is projected that shortly in the future the crossing will be open for only twelve minutes in every hour." "What will happen to the emergency services then?" "Every solution has been looked at and there is nothing to be done." So there you have it. Nero played his fiddle while Rome burned. Or was this just our PC members being too sensational and exaggerating the problem?

The ECDC however does appear to have its grip on clunch barns and walls, though, because I have not been involved I do not fully understand the subtleties. Barns are able to fall down and have a poor look alike replacement, barns are allowed to be demolished, yet the bulging wall around the Cage has been subjected to what appears to be an amazingly expensive harassment. First the PC had to pay for a consultant's report, then it had to pay a consultant to say what materials should be used. Now it has to provide a 'Design and Access Statement'. This has been prepared by Paul Latchford who submitted it at the meeting saying it had taken him a long time to complete. The PC was appreciative but thought he must stress that the only reason for the work is the fact that it is likely to fall down on someone. In other words it is a public danger. Six copies of the Statement, with photographs, need to be submitted.

Alastair Everitt

NEARLY NEW SALE OF LADIES FASHIONS AND ACCESSORIES

SATURDAY 9th October 2010

11.00 am – 3.00 pm

Baldwin Manor (High Street)

(entrance opposite thatched cottage at Bulbeck end of the village)

By kind invitation of Mrs. Marcia Miller MBE

All proceeds to St. Mary's Church

If you have any really good ladies clothes or accessories which you would like to donate, please deliver them to Kate Child,

73 High Street from 4th October



Gypsy Site-The Story So Far

Following the Consultation Process for the Local Development Framework (LDF) the results and intended actions will be tabled to the Strategic Development Committee at the November Meeting of said Committee and we'll hear nothing before that meeting.

The Consultation Process formed only the first part of our Strategy in providing clear, objective and informed arguments against Heath Road, Swaffham Prior as a solution to East Cambridgeshire District Councils (ECDC) perceived need for additional pitches. In addition to the ability of villagers and their families to input their considered objections (via the questionnaires), there are many other Stakeholders influenced by this proposal; The Council's own Conservation Officers, Natural England, English Heritage, The Wildlife Trust, Devils Dyke Conservation Groups and Land Owners to mention but a few. Pressure was also being applied by our elected politicians, Parish Council and a number of highly visible individuals forced, in our opinion, a change to the content of the agenda item 6, at last Tuesdays (7th September) Strategic Development Committee Meeting.

The Principal Forward Planning Officer tabled a document, called Local Development Framework – Work Programme, to consider options “in light of legislative changes and guidance arising from the new Coalition Government”, something presented and dismissed at the June Meeting.

The recommendations put to the Committee in the 12 page document (see link below) covered five points, two of which were specific to Gypsy and Travelling Showpeople and in essence these proposed changes are: -

All previous pitch targets (54 pitches) be dropped and ECDC should operate with an Interim number of pitches (24 pitches) whilst

A full assessment is carried out i.e. Real Need & Local Requirements and would / should reflect the responses to the recent LDF Options Paper Consultation.

The recommendations were debated fully and our District Councillor Allen Alderson, in our opinion ‘did us proud’; he questioned the methodology, the Need and NO local Requirements. It was also stated by Allen Alderson and the other Councillors that spoke, that with current vacant pitches and pitches with planning that have not been taken up, almost all of the 24 pitches could be satisfied from current availability - this was agreed by the Principal Forward Planning Officer. It also was made clear that of the 2000 responses to the ‘Options Paper’, the first of the two questionnaires, 40% were representations from Swaffham Prior and if that didn't say ‘Local Input’, then nothing did. It was also suggested that any additional pitches needed to reach the ‘Interim Target’ a much better solution would be by adding 1 or 2 pitches to existing sites.

Following the Meeting we are Cautiously Optimistic of a positive outcome at the November Meeting.

<http://www.eastcambs.gov.uk/meetings/meeting-strategic-development-committee-070910>

A decorative graphic for a '2010 Harvest Supper'. It features a lighthouse on the left, a windmill on the right, and various autumnal elements like pumpkins and corn cobs. The text '2010 HARVEST SUPPER' is prominently displayed in a large, bold, serif font. Below this, a white rectangular box with a black border contains the event details.

**2010
HARVEST
SUPPER**

6pm Village Hall

**Tickets: £7.50 (£6.50 concessions, £4.50
children under 11)**

Contact Dee Noyes on 743864

A horizontal banner with a yellow and orange abstract pattern, resembling a sunset or autumn leaves.

Fresh Fish, Smoked & Shell Fish
Outside Manchetts Budgens, Burwell
Opening Hours
Tuesday, Wednesday 10am to 4pm, Friday 12 to 6pm
We will now be opening on Alternate Saturdays
Starting
Saturday 9th October 2010
9am to 12.30pm
Orders Taken - Free Delivery within The Village
Email. Fish.burwell@gmail.com
Tel: 0771 709 9641

QUIZ NIGHT

**Swaffham Prior Village Hall
7.30 pm ♣ Saturday**

Saturday 13th November 2010

Tickets: £6 each ♣ To book a table contact

Jenny Brand ☎ (01638) 742161

or

Lynne Rand ☎ (01638) 741960

Jacket Potato Supper ♣ Raffle

Bring your own drinks and glasses

Proceeds in aid of St Mary's Church, Swaffham Prior

That Dog Show

The start may have been a bit slow – when we arrived at a few minutes before 2 pm barely a handful of dogs was to be seen and we did begin to think that the dog show might be over and done with rather quickly, sending these very few dogs home festooned with several very fine rosettes each! But, we of little faith! Out of the woodwork they all came to provide a very fine and varied field of canine contestants from near and far. Judging was definitely a challenge given the level of the competition, but we tried to be fair and even-handed. In some cases however we had to settle for a draw with joint firsts . The two second place rosettes went to the two entries in the best toy dog class – the dogs did not seem to mind, and one of them was even a stray with no apparent owner! All competing canines largely behaved impeccably (as did their owners/handlers), the sun was shining (amazingly, given the downpour merely a few hours earlier!) and hopefully a good time was had by all. We certainly enjoyed it immensely (– and have so far not received any dubious anonymous letters or wondered what that strange taste in the tea might be). So a very big thank you to Kate Childs in charge of entries, our brilliant compere Alistair Everitt, Alan Gould who very kindly sponsored the event, and of course not least to all who came and took part.

The standard has been set – Crufts beware!!!!!!!

Anthony and Simone

*Many thanks are due to incorruptible Anthony & Simone for their unbiased judging!
The event raised £47 for St Mary's Church.. Eds*



I'm the Greatest!!



Groan....



The Moveable Feast

There's always something special about extending a welcome and hospitality to people you've never met and being the strangers on the receiving end of that kindness is doubly special. As relative newcomers to the area, this was our first taste of Swaffham Prior in action – and it tasted very good indeed.



We arrived out of the damp of the Autumn evening into the warm, cheerful welcome of the kitchen at Adventurer's Farm, where Janet Willmott had somehow magic-ed a delicious starter to serve 24 and a glass of chilled bubbles to go with it. Then it was off into the darkness, this time, for us, to the home of Catie and Peter Whitely for an exceptionally tasty main course washed down with good wine and good conversation. So convivial was it that we were almost late arriving at the final destination where Kate Child presided over a festival of puddings with a gentleness and warmth that made it impossible to feel like strangers any more.

If you're wondering about taking the plunge another year, then do. Community starts at home - or in this case in the several homes of all those kind enough to throw open their doors to welcome people in. Thank you to all involved for your excellent hospitality and for your culinary skill – hoping we can look forward to sales of the spin-off recipe collection...

Jo and Andrew Trump

Many thanks to Janet Willmott and Kate Child for organising this excellent event and to all the hosts, including our own main-course hosts for the evening: John and Jill Jordan. £330.50 was raised for St Mary's. Eds



The Prospects Trust 21st Birthday Present - A Bus Shelter! We hope you can help us celebrate 21 years of organic growing by supporting Snakehall Farm.

RASP NEWS

We've moved forward significantly this year, and need community input on how much further we should go.

In brief: we have now established a 100Mb fibre link from Reach directly into the national web backbone. We are currently renting 10Mb of this, but with a few more members could go for a significant increase.

With our current technology we aim shortly to have everyone enjoying a minimum of 3.5Mb speed for both uploading and downloading. Many members already have more. With a modest further investment we aim to have everyone enjoying a minimum of 5Mb up and down. As a reminder, despite all the literature through the letterbox, reality of other providers is between 2Mb and 4Mb down, and half a meg up if you are lucky. This is a simple reality of what the old copper-wire based services can provide. Our fibre optic based service can out strip this significantly.

With another 25 members we could up our bandwidth to 30Mb and have everyone enjoying a 20Mb speed. This is what people in main UK cities enjoy, but something we have little hope of receiving from BT for the foreseeable future, not least now that the Government has cut back its funding on developing broadband services for rural areas, which is an uneconomic task for commercial entities like BT.

For many, the basic service that BT can provide down the existing copper wires is all they need to access and send simple emails. But if you want to use services like BBC iPlayer, or if we want to pursue a greener agenda which allows for more business to be done from home or from businesses in the villages, then what RASP provides on a not-for-profit, unpaid community self-help basis... deserves much greater attention and proactive support than perhaps it currently receives.

Bryan Pearson
Chair, RASP

Tender and Passionate

"The conversations were long, but there were very few wasted moments. Our minds moved fast and at that point in sync. When others were present we felt the pace and power diminish, until, a bit like lovers desperate to get to lovemaking but disturbed by old friends dropping round, we would try to bustle them out, steering them doorwards with a hearty slap on the back."

Who wrote this and who are the people involved?

Answer on page 23

Book it in your diary now!

The four book clubs in Lode are getting together to host the **Lode BookFest** at Lode Social Club and the Passage Hall on **Saturday** and **Sunday 20/21 November**.

We are delighted that thriller writer and historical novelist **Mike Ripley** will be talking about his work and answering your questions on Sunday 21 at 2pm. Come along for a fascinating afternoon with an author who, among other accolades, has been described as 'England's funniest crime writer' (The Times). Everyone welcome but if you are part of a book club why not make one his latest works your choice for November. The Legend of Hereward" (Severn House paperback) is set in the Fens and specifically mentions Reach and Burwell. Or try Angel's Share (Allison & Busby) his latest in the Angel series of comedy thrillers. See more about Mike Ripley on www.thatangellook.co.uk and www.shotsmag.co.uk where he has a 'gossip' column on Getting Away with Murder.

Other attractions during the weekend are Storytelling Activities for 0-5s, a story illustrating workshop for 5-11 year olds, a children's writing competition, bookstalls including secondhand craft books at the Craft Fair on Saturday afternoon at the Social Club, and a film night on Saturday.

Further details on www.lodesocialclub.co.uk and from Elizabeth Mitchell

C. 812843 elizabeth-mitchell@hotmail.co.uk or Carole Faulkner (children's events) C.811963 carfaulkner@googlemail.com

Look forward to seeing you there.

Elizabeth Mitchel

THE ENGLISH, THE ENGLISH THE ENGLISH ARE BEST

Bon Mot Number Six quoted the above chorus line from the 1960's Flanders and Swann 'Patriotic Song'. It's impossible to make such a statement without producing some evidence. Flanders and Swann provided this. They began with the Scotsman.

"The Scotsman is mean as we're all well aware
He's boney and blotchy and covered with hair
He eats salty porridge, he works all the day
And hasn't got bishops to show him the way."

The newly released film 'The Illusionist' gives an interesting picture of the Scotsman in Edinburgh and in the Islands.

NEXT MONTH: THE IRISHMAN



Swaffham Prior



CHRISTMAS MARKET



Saturday 20 November 2010

2.00 – 4.30 pm



In the Village Hall



Tombola – Raffle
Christmas Produce
Children's Corner
Lucky Dip & More
Refreshments



Admission 50p

children under 12 free

Proceeds to St. Mary's Church

Please come to the **next Neighbourhood Panel meeting**
Burwell Village College on
Wednesday,
6th October, 7.0 – 9.0pm.
You will be very welcome!

If you have an issue of concern, but are unable to attend the meeting, please contact Cllr Andrew Camps or Alan Williams (Neighbourhood Panel Coordinator)

alan.williams@eastcambs.gov.uk or by phone on 01353 – 665555.

The End of the Clock Saga---Perhaps

For several years the reliability of the church clock has been suspect. The fact that it is now wound up by electricity, means that regular visits should not be necessary, and that good time-keeping is an integral part of modernisation. This has not happened as we expected it would, and the many trips up the forty steps to the clock room have not, until recently, cured the problem. The solution has at last been found, and we hope that the occasional visit, say once every month will ensure reasonable accuracy.

The above paragraph will no doubt satisfy many readers, but I offer the explanation of our problem to those interested, and the repairs necessary to correct it's timekeeping.

During the repairs to the fabric of the church five years or so ago, the clock face was also a candidate for attention, and perhaps a new winding system. For many years Philip Sheldrik climbed those steps every other day to wind up the ropes tied to the heavy weights driving the Going, and Striking mechanisms. If the clock gained a little he could put it right, and we would hardly notice his corrections.

The experts in the Churches Conservation Trust suggested that the new clock face, and the Electric winding gear would ensure good time keeping, with not too much attention. Their only condition was that no alterations to the ancient mechanism were allowed, as this time piece is of the same vintage as that in King's College, and should not have it's integrity impugned.

The ropes were replaced by a large cog-wheel fixed by clamping it to the old wooden barrel, roughly in the centre, of both the "going" and "striking" systems. Over these two cogs passed the chains supporting new heavy weights, replacing those on the end of the old ropes. These weights drop some ten inches, turning the barrels round, and are then raised by the electric motors to their starting positions.

All went well for several years, the time keeping was not that good, but sufficient for a village clock. At least the four trips a week stopped. The gears behind the clock face worked well, as did the night silencing, which is also operated up there. I say up there, because the clock and the clock face are on different floors, and a stout shaft driven by the clock conveys the turning motion to the hands

All that sets the scene for the trouble. During the dry summer period the wooden barrel shrank, so that the cog-wheel became loose, and moved out of alignment with the driving chain. This would not be too serious with the going train, but the striking train turns very fast; indeed the weight does not get lifted by the motor when striking more than four blows. This speed, and a loose cog, which had moved sideways, caused the chains to jam round another part of the system, and moved the whole clock off it's cradle.

Sidney Hewitt and I managed to lift it back, and straighten out the chains, but other damage had occurred, particularly with that stout shaft leading up to the clock face. We tried many tricks to get the clock to go faster. Rod Clayton, an athletic young man went up the tower many times to correct the time. As he lives in Anglesey House he sees the clock every time he opens his back door, and has a

special interest in good time-keeping.

Having all failed in our attempts, the expert was called in. Mr Colin Walton noticed that the weight of part of the clock was hanging on the shaft to the clock face, and that the gears on it were very tight. After lifting the frame up by packing under the base, an inspection was made behind the clock face. This is quite a hazardous business, as it involves climbing over the bell frames, which is too much for the elderly clock minders.

After minor adjustments, Colin was satisfied that all should be well. The tinkering I had done with extra weights on the pendulum was removed, and we have had an accurate time keeping for a whole week now. I hope all will continue to run smoothly, and that Rod will not be called upon to climb the steps too often.

John Norris

Scout Shelter - Grand Opening

On Wednesday 7th July, 1st Swaffham Prior Cubs & Scouts hosted the opening of their Shelter at the Scout Field.

Guests included delegates from local organisations who have supported the project and/or made generous donations towards the cost of the Shelter, individuals who have given up their time and/or resources to complete the project and parents of the Cubs & Scouts.

The guests were met at the main Church gate and accompanied to the Scout Field where they were given a guided tour of the site. The Cubs and Scouts had erected tents and lit fires to show how the field looks when in use.

The guests, Cubs & Scouts then assembled under the shelter where they were addressed by Tim Doe (Group Scout Leader) who outlined his vision for the field and thanked those assembled for their help with the construction. Mandy Kingsmill (Chair of SP Scout Group Committee) cut the ribbon and officially declared the Shelter 'open'.

The guests were then served with hot sausages & drinks prepared by the Cubs & Scouts.

A Personal Account – A History of the Shelter & Field Project

About six years ago, James Willmott, on behalf of Henry Hurrell offered the Scouts the use of an overgrown field at the end of the village. Little did he appreciate the significance of his kind offer.

Over time, the field was gradually cleared of thorn & bramble, but its full potential had yet to be realised.

On 13 September, I found and buried near the top of Rogers Road, a beautiful pedigree white cat (Burmese?) with brown feet, tail and ears, no collar. I did ask at houses nearby but couldn't locate an owner.

Any queries, call Mark 744062.

In autumn 2008, I tabled a proposal to build a small wooden shelter so that the Scouts would have somewhere to shelter in case of rain. Nothing too elaborate, most likely a garden shed without the walls. I also knew where I could lay my hands on an old freight container which could be used for secure storage of equipment. The centre of the field whilst cleared was un-grassed and riddled with stumps so it was decided to plough it up and re-seed it. The Committee agreed, a budget was set and funding was sought.

Within no time at all, Mandy Kingsmill had secured a youth grant from County Council and along with funds from the Sports & Social Club and the Parochial Charities, we had the £1,750 we needed.

The reseeded was carried out in April 2009 but then the plans for the shelter went awry.... in a good way!! A parent, who is by trade a builder, offered his services to ensure that the shelter was built to last and be fit for purpose. He made some significant design changes supported by sound arguments which resulted in a much bigger, stronger and potentially longer lasting shelter. It would also look nicer!

Work began when the posts were erected in November 2009. The trusses were put up over winter and the tiles placed. Due to the harsh winter, the roof was completed at Easter.

We all stepped back in awe at the shelter. A magnificent construction coming in at only twice the original budget for the build!

After an appeal in the Crier for unwanted fencing and building materials, two gates and a number of railway sleepers were forthcoming. The sleepers were used to form a retaining wall around the shelter base as we had a 2 foot fall in ground level and a request placed with a local company for some appropriate backfill to level up the floor. The proprietor of said company visited the site to see what was needed. Having evaluated what was required, not only did he supply the material for free, but also sent in his men and machines to ensure that the base material was correctly laid! This was done the day before the Grand Opening was scheduled!

What's Next?

This autumn we will be:

Finishing off the floor in the shelter

Seeding the area around the shelter with grass

Putting up a gate at the entrance along with some fencing

Establishing a willow coppice

Longer Term

Establishing a conservation area, planting new trees & bushes

Building a small wooden eco-toilet block

Our Thanks go to:

Henry Hurrell for the use of the field.

Ted Hurst, John Berry, Steve Kent-Philips & the members of the Sports & Social Club for funding

Pam Waters & the members of the Parochial Charities for funding

The Festival Committee for funding

The Parish Council for funding
Mick Hill for building the shelter
Martin Mead for the shelter base
Molly Butler of Lordship Farm, Swaffham Bulbeck, for ploughing up the field
Dave King of Burwell for establishing the new grass
John Norris & Michael Limb for the gates
Ray Goddard for the sleepers
Numerous Parents past & present

Tim Doe

Swaffham Bulbeck School PSA Bonfire & Firework Party



Friday 5th November

Open: 6pm

Vicarage Field

(behind St Mary's Church, Swaffham Bulbeck)

Adults: £3 Children: £2

Group (of 4, max 2 adults): £8

Lite ropes for sale: 50p

Hot food & drinks available

“NO SPARKLERS PLEASE”

Your children are your responsibility.

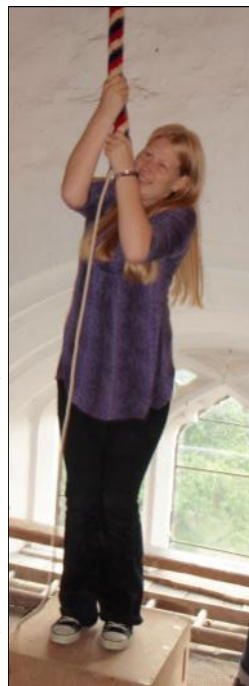
Please keep away from the firework display site.

The German Visitors

“See you in 9 hours!” was the cheery email from Rev Jan Petersen on his departure from his home in Joldeland near the German border with Denmark. He was travelling with 16 teenage confirmation candidates and co-leader, Anne, to spend four days in Swaffham Prior where he had been curate eight years ago. We had spent months in email contact organising the trip and everything was planned to precision.

Fourteen hours later we collected the exhausted group from Cambridge Bus Station! – nothing could have accounted for the plane delay – but there was never time during their stay for exhaustion to set in. On Thursday morning at 8.45am the group met at the primary school to spend the morning teaching German and taking assembly. They ate their packed lunches in the now very user-friendly St Cyriac’s and spent the afternoon bell-ringing and brass rubbing in the two churches, and rehearsing for the bi-lingual Family Service planned for Sunday. A fish and chip supper for guests and hosts completed the day – fish in batter was a strange concept for most of the visitors!

The group caught the bus to Bottisham Village College on Friday where they learned a lot about our secondary school system – and had a school lunch! – and taught about their school system. Then it was off to the host





families to experience everything Cambridgeshire life had to offer; apparently shopping in Primark was a favourite pursuit!

On Saturday, Jan took the group to Cambridge where Elisabeth Everitt led a tour, a punting race was held and shopping again featured prominently. Back to the village then for a sausage supper on the scout field and impromptu football games with visitors and hosts mingling well.

Sunday morning saw 30 youngsters participating in the Family Service – quite a sight to see that number of “silly sheep” performing in the sketch; the Germans coped brilliantly with everything the director threw at them! It was a wonderful service – the church was full - and was followed by an excellent bring and share lunch in St Cyriac’s. We almost spent too long taking group photos and it was a mad rush to get to the airport bus in Cambridge – but we made it with 1 minute to spare!

Huge thanks to everyone who hosted visitors – the White, Doe, Freeman, Lewinski, Jordan, Everitt, Wilson, Kingsmill, Wade, Oliver, Reeks families (and extended families) who gave generously of their time and resources, and



others who helped to plan, finance or run particular events – including Alastair Everitt, Elisabeth Everitt, Brenda Wilson, Kate Child, Mandy Kingsmill, Francis Reeks, Steve White, Tim Doe, St Mary’s PCC, Churches Conservation Trust and all at Swaffham Prior Primary School and Bottisham Village College. Jan and I are hugely grateful for the support you gave and all involved greatly enjoyed the experience – one to be repeated, I think!

Dee Noyes

Friends of Bottisham Village College CHRISTMAS MARKET

28 November 2010

at Bottisham Village College

We are now taking bookings from stall holders for our very popular Christmas Market.. Please telephone 07747484058 or email friends@bottishamvc.org for a booking form.

What's on at Anglesey Abbey?

October 2010

Freaky Friday: Wild about Cooking

Friday 29 October, 2.30 – 4pm

Join our chef as he gets creative and of course messy, making spooky treats.

£5 per child Booking essential on 01223 810080

Model Mania – Vintage Hornby Trains

Sunday 17 October, 10.30am-4pm

Everyone has a fond spot for these mini-speedsters. Warm up with this special indoor exhibition. Chat to members of The Hornby Railway Collectors Association to uncover the fascinating tales behind models from the 1920s to the 1960s. Bring back childhood memories or create some new ones...will you discover your favourite?

Wild Play

Monday - Sunday, 10.30am – 5.30pm (last admission 5pm)

Explore the Wildlife Discovery Area – perfect for family adventures. Spy on nature, read and act out stories in the storytelling circle, add to the dens or create your own land art. For details of all our events and opening times, please call in for a copy of our 2010 events leaflet or phone 01223 810080

Email: angleseyabbey@nationaltrust.org.uk, www.nationaltrust.org.uk/angleseyabbey



The Burwell Surgery Flu Vaccine Clinics

We are again holding two open access flu clinics this year. No appointment needed.

Saturday 9th October 9.00 am – 12.00

Thursday 21st October 3.00 pm – 5.30 pm

There will also be a clinic at the Day Centre on Thursday 14th October from 9.30 am to 11.30 am.

Please contact the surgery or the Day Centre for an appointment.

Those in flu 'at risk' groups are: those aged 65 and over, people living in residential or nursing homes, carers, chronic respiratory disease, asthma, heart disease, renal disease, liver disease, neurological disease, diabetes, immunosuppression and pregnant women.

WHAT A DIFFERENCE A VOLUNTEER CAN MAKE!

When Lode Mill's new Steward, Chris Stimson, wanted to put the flour bagging process on show, a helpful new volunteer was on hand. David Purr happened to have some very valuable skills from a lifetime in agricultural engineering, and created a bench to tuck in next to the flour shoot. Say Chris, "He really carries on the tradition of millers who've always put their hand to anything to keep the mill moving – this is what it's all about." David is one of the crew of new volunteers enabling the mill to open more often but Chris is looking for even more volunteers.

You could be a college leaver (with the employment market so competitive, volunteer experience could give you an edge on other applicants). Or you might be someone who wants an active retirement. Volunteers at Anglesey Abbey can practise skills in everything from guiding tours and advising visitors, to getting the water mill's wheels moving. It's a great opportunity to meet people and we have volunteers of *all ages* here. For information call at the Mill or ring us – 01223 810080.



David Purr with fellow volunteers



Chris Stimson bags up flour

BON MOT NUMBER SEVEN

"To rely on wind power as a major power source
for the nation is balmy"

Clive Aslet

It was Tony Blair talking about Gordon Brown!

Answer to Quiz Question:

Anne Ivy Fuller

Ann Ivy Fuller(Nee Wood)-Burwell & Reach resident for over 70 years-passed away 21st August 2010

Ann's family would like to thank everyone for the letters of condolences & donations for the Arthur Rank Hospice & for all family & Friends that attended her funeral on Tuesday 31st August 2010

We would like to thank all of the local support services,Burwell Surgery,Lloyds Pharmacy,Bartrum's who provided home support & the Arthur Rank Hospice for all their care & support in her final week's

Ann was born on the 22nd May 1936 at Waterbeach, to parents Robert and Lillian Wood. She was the youngest of their two children and sister to John. At the time they lived at Waterbeach before moving when she was two years old to Reach. The family lived at Church farm which is now The Dykes End Pub Her father was a farmer and some of John's earlier memories were of Ann screaming her head off when her Mum went to help with chopping the beet, therefore she obviously did not like all the experiences of growing up on a farm! Although her cousin Derek remembers those days at the farm being surround with family and the animals as being without doubt some of his happiest childhood memories.

Ann attended Reach primary school which is now the village centre before moving to the secondary school in Burwell. On leaving school she continued to study at the Tech in Cambridge before working as a Solicitors Legal Secretary with Francis & Co.

It was during her time at the Tech that she met her friend Cammie and the two used to enjoy travelling around Europe. At the age of thirteen she met Jean and the two have been great friends ever since. I guess one of those forever people who entered each others' life. The two enjoyed and experienced many changes over the years of growing up and maturing into young ladies. They were not only firm friends but also had a very special spiritual bond that few people experience.

Ann loved to dance, at her 21st birthday party which was held at the farm her Mum was worried that they would fall through the floor with all their dancing! It was at a dance at the Bar of the Dorothy Dance Hall in Cambridge that Ann met Don in 1959. The two began to court and in time they were married here at St Etheldreda on the 11th March 1961. They enjoyed their honeymoon at the Imperial Hotel in Russel Square in London. At the time Don was a Quantity Surveyor and as a result of his work they moved temporary to the village of Seend near Devizes in Wiltshire. It wasn't long before they moved back to Reach and lived in Hythe Lane. In 1971 Don and Ann had their own home built, no 14 Fairgreen right next door to her old primary school.

It wasn't long before the two started a family and it doubled at the arrival of their twin sons Andrew and Peter on 1st April 1962. Eighteen months later their youngest son Paul was born on the 13th December 1963. It was typical of Ann to choose biblical names for their sons.

Having three very young sons to take care of, Ann finished work to be able to be at home for them and give them the care they needed. She was a devoted Mum who not only loved her boys but also was very proud of them. She was always there for them. Don worked in London for sixteen years and would leave early each morning. Ann was a full time carer for her family.

Her sons were typical boys who loved to play out on the green with the other children. They would have to keep an eye out for Ann, as she would walk out the front door at 7.00 p.m never saying anything and they knew it was time to be in. The boys would spend so much time at the farm and help out with the harvesting and other jobs. They would enjoy shooting and fishing, and much of the game was hung up and Ann would cook it for them. There was the time when Ann was not happy when she heard the news that they had shot at Uncle Jack's weather vane. Although Uncle Jack wasn't worried, he never did like it!

Ann used to worry about her sons going fishing and would never let them go alone. That is until they reached the age that they didn't need to be chaperoned any more. She made them promise they would not go anywhere near the Reach pit with its 15ft drop. Well boys being boys when they couldn't catch anything in the spot they were in, went and fished at the pit. It was only in recent years that Ann heard the truth of what they used to get up to!

In time as her family grew into young men the inevitable happened and Andrew left home and married Paula in 1985. In 1989 Paul married Paula's younger sister Linda. In 1992 Peter and Caroline were married. Ann found it hard to adjust when her sons left home. It left a void, although she always said she gained three daughters when they married. One of the highlights in the family was when their first grandchild Adam was born. She had in one sense lost a son but gained a grandson. Ann was the proud Nana to Luke, Stephanie (who was the first granddaughter in the family line on Ann's Mum side since Ann was born) She was followed by Matthew, Joshua and Jamie. Ann was devoted and loved all her grandchildren equally. She would look after the next generation when her daughter in laws returned to work. She would give them gifts on their birthdays but always gave their sibling a card and gift to so as not to leave them out. She loved to make up Santa sacks for them just as she did for her own sons.

One of the things about Ann was that she was very house proud. Her home was immaculate even with having three young sons. At an early age Ann suffered with rheumatoid arthritis, however it never stopped her keeping her home beautiful. She had so many treatments over the years and operations on her hands, feet, knees and hips. She was never one to grumble or complain. When her family visited her she never let on how much pain she was in. It was only after they left that Don would find her in tears with such pain. The family tried to encourage Ann to move her bedroom downstairs to make life easier for her, but she would not hear of it. That was the best room and it was staying like it!

In 1997 Don and Ann moved to Poplars Close which was much easier for Ann to cope with.

Not only was Ann house proud but she enjoyed cooking. She loved to cook good old fashioned meals and roasts. She particularly liked home-made jam and sweets, having a sweet tooth herself. She and all the family would enjoy large family get togethers.

Ann was an avid reader of Mills and Boons, and attempted to finish a crossword in the paper everyday. She also liked to be entertained with soaps especially Emmerdale and comedies. Ann liked different types of music; she liked Val Doonigan, John Denver, and Glen Campbell. She also liked to watch Songs of Praise and enjoy the hymns.

As a child Ann would go on holiday with her parents. From an early age she didn't lose that love of travelling. She loved the coasts and would love to go to Heacham, Bradwell and special times with her family on the Isle of Wight. Later in life Ann went on a couple of cruises with Don.

I guess each one of us with our different memories, would know Ann as a women who never had a bad word to say about anyone. She always saw the good in others. She had the ability to treat all as equals. She was very independent and had a great sense of humour and could be a bit mischievous in a cheeky kind of a way just like her Mum was.

Ann battled for most of her life with pain, in time she was diagnosed with cancer and fought it with great courage. She was moved to the Arthur Rank and it was there that the nurses who cared for Ann and had been trained not to get emotionally involved with the patients, told her family this was not the case with Ann. The family are truly grateful for the excellent care Ann has received particularly whilst at the Arthur Rank. The care for Ann and support to all the family has been without doubt carried out in a dignified and discreet caring way. Any donations received will go to the Arthur Rank with grateful thanks for all they were able to do for Ann. Friends in America are sending out twelve rose bushes and three rose gardens will be planted there by her sons. Ann loved to watch the two doves that would come to the bird tables outside her window so new bird tables will be also donated to brighten other patients days.

Ann lost her brave fight against cancer on the 21st August at the age of seventy four. She died peacefully with her three precious sons at her bedside having seen Don for the last time earlier that day.

If you would like to send a donation for the Arthur Rank Hospice in memory of Ann these can be sent C/O 76 Silver Street, Burwell, Cambs, CB25 0EF

The Fuller Family



WI Notes

For our September meeting the speaker was Beulah Candappa, a teacher and professional story teller. We first learned about her childhood, growing up in Burma in a large family where the traditional entertainment in the evening - in the absence of television or even radio - was story telling. Now many years later Beulah had us all entranced by her stories, poetry, songs and folk law. She also talked to us about the research in which she is involved at London University Institute of Education on Functions of Traditional Narrative. Her stories both for children and adults aim to build bridges of understanding between different cultures. We felt very privileged to have met such a gifted lady and shared in the pleasure she obviously gets from sharing her experiences. We joined in the singing and also learned to say hello in many different languages - including Russian and Japanese!

Our next meeting is on October 18th when our speaker is Anne Datson who is going to demonstrate how to paint on glass. This will also involve a hands on session - so bring along a glass or jam jar and a small soft brush if you have one and learn a new craft.

New members are always welcome to our friendly group or come as a guest (£3 per meeting).

Pat Cook

President, tel: 01638 742224

Anglesey Group Mothers' Union



Nicky Jackson from EACH (East Anglian Children's Hospice) at Milton was our speaker at the July meeting. She explained how the Hospice, which was opened in 1989 by Diana, Princess of Wales and celebrates its 21st birthday this year, provides care and support to families living in Cambridgeshire who have children with life-threatening conditions or complex health care needs which require palliative care. It is a charity organisation which relies on public support for the majority of its income, and has a team of 30 paediatric and palliative care trained nurses. Care is provided in a number of ways – respite (where the patient is cared for by the hospice and family stay in family accommodation close to the hospice giving parents and family an essential break from the 24 hour caring role), play therapy which involves using sensory play allowing different ways to access play and books, music therapy enabling patient and family to share quality time together. Other facilities include a hydro-therapy pool. If the patient is too ill to come to the hospice EACH will provide care at the patient's home. The family support unit provides essential support for parents and children, giving much support to siblings of the patient. There are 'chums' groups where siblings are given the opportunity to come together and discuss the difficulties of having a brother or sister who is sick and give support to each other. Support is also provided for Grandparents, Aunts, Uncles and the special friend of late teen patients.

The ultimate service provided by EACH is end of life in the home or hospice with as much time as possible given to 'memory making' activities, so parents and family have many quality memories of their loved at the time of and after end of life. Families continue to receive support from the hospice for 3 years after the death of a child, and a memory day is held each year where families can come together and light candles and release balloons.

Nicky concluded her talk with a short film entitled 'Katie' telling the story of how EACH provided care and support for a little 5 year old girl and her family. This was very poignant, showing clearly how traumatic circumstances were made so much more endurable for the whole family by their receiving the invaluable services and support of EACH.

In August 23 Mothers' Union members enjoyed a Summer Cream Tea. This event was held instead of the originally programmed outing. The afternoon started with prayer led by Reverend David Lewis who joined us for a delicious tea of sandwiches and clotted cream scones. To accompany tea there was a short general knowledge fun quiz. It was agreed that surplus profits from the tea should be donated to the East Anglian Children's Hospice Charity.

Our meetings are held on the third Thursday of the month and you are most welcome to come along and join us in Lode Chapel at 2.30pm. In October Angie Stewart will be speaking to us about the work of Cambridge Women's Aid and we will be holding our "Autumn" Bring & Buy Stall.

Ann Langran 01223 812797

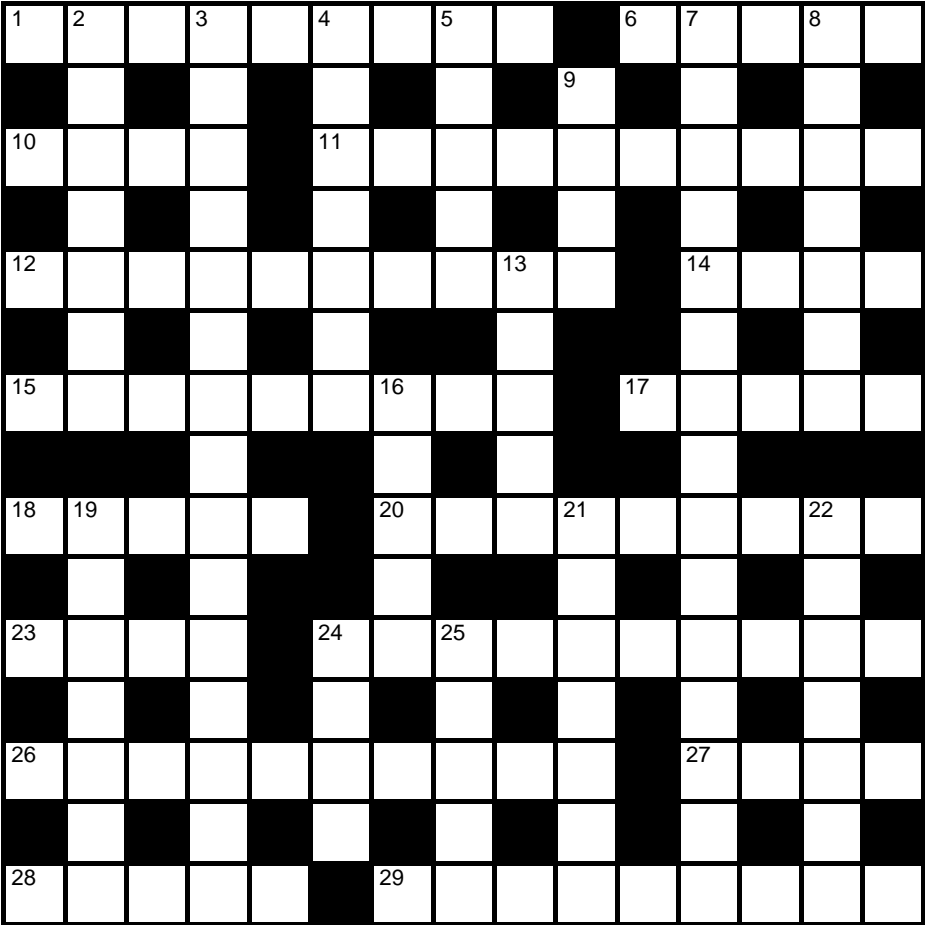
Crossword Number 71

Sponsored by **The Red Lion**

Compiled by

OUNCE

This month's puzzle is a simple cryptic crossword. Send your answers to the editors by 18 September 2010. The first correct solution out of the hat will win a free meal for two at the Red Lion—See the Manager at the pub for full details.



Across

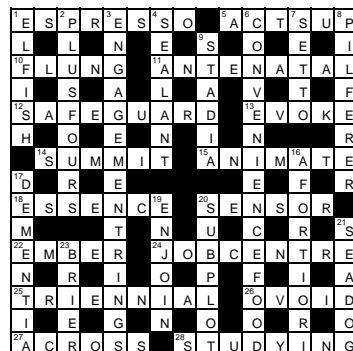
- 1 Myra steps out with Smiley perhaps? (9)
- 6 Nothing gloomy about this smell? (5)
- 10 Joker shelters queen from legal document. (4)
- 11 Terrine met strange retreat. (10)
- 12 Unruly-natured hen below. (10)
- 14 Certain monk's haircut loses weight. (4)
- 15 Mandela is represented by one preferring female company. (6,3)
- 17 Ice, dice or roots? (5)
- 18 Scorch French monkey? (5)
- 20 Eccentric new theorist is most prickly. (9)
- 23 Dandy wearing a ribbon we hear. (4)
- 24 Wacky grin splits adolescents. (10)
- 26 DHS curdles sourest bloodstock. (4, 6)
- 27 Republic or Provisional question? (4)
- 28 Stray inhabitant of classical woods. (5)
- 29 My singers work better together. (9)

Down

- 2 Constant managed short laugh finding small carnivorous fish. (7)
- 3 Astounding rhyme for parent's time. (9,6)
- 4 Loose skirts and airs surround a redhead. (7)

- 5 Additional minor actor? (5)
- 7 Sterilising badly induces one maligned son. (15)
- 8 Unsettle nun, crazy ever after. (7)
- 9 Coy male departs from parade. (4)
- 13 First thing at night, go out and dance! (5)
- 16 Lawrence returns with Tom and musical composition. (5)
- 19 Nothing taken from indelicate drink. (4,3)
- 21 Rejoinder from Cambridge Tripos test paper. (7)
- 22 Gins Sal mixes for train controllers. (7)
- 24 Initially, Summer's last offering ends up in gin. (4)
- 25 Hazardous venture in Kalahari skyline. (5)

Solution to crossword no. 71



We congratulate Trish Whitehead, the winner of last month's competition, who should collect her prize certificate from the editors.



News from Wicken Fen

A big thank you to everyone who joined us for our community celebration on 12 September for the official opening of the Reach Lode Bridge and Burwell Fen cycleway. We were delighted with the turnout and hope that everyone enjoyed themselves.

The new bridge and cycleway form part of the Lodes Way running from

Wicken to Bottisham which has now been signposted along the entire length with blue National Cycleway network signs. A copy of the Lodes Way leaflet, complete with a map of the route is available from the Wicken Fen Visitor Centre or online at www.wicken.org.uk

Plans are now being developed for a new crossing over Burwell Lode suitable for walkers, cyclists, horse riders and our free roaming herds of konik ponies and highland cattle. Consultants have been appointed to design the bridge and we are hoping to submit a planning application to East Cambs District Council later in the autumn.

Planning approval was received at the beginning of September for the construction of a low level clay bund enclosing 80 hectares of Burwell Fen; this will assist the creation of mixed wetland habitat through the shallow, seasonal inundation of the enclosed area. The bund will have a maximum height of 650 mm above the surrounding ground level and once it has been re-colonised by grasses and reeds will not easily be noticeable in the landscape, in fact the new cycleway across Burwell Fen will form the Eastern end of the bund.

In August we were delighted to learn that we are to receive a grant of £224, 583 from the WREN Biodiversity Action Fund. Wicken Fen was one of 10 projects nationwide to receive grants totalling £2Million aimed at helping to achieve the UK's ambitious biodiversity targets. Wren (Waste Recycling Environmental Limited) is a not for profit business that helps benefit the lives of people close to landfill sites by awarding grants for community, conservation and heritage projects. A significant element of the grant will be spent on the Burwell Fen habitat restoration project mentioned earlier, new equipment and will help fund a new Warden post.

A major project to re-wet



Sedge and Verrall's Fen is set to commence at the end of September. In recent years both fens have received little water from flooding which was once the case. Today the main source of water is acidic rainwater which is having a detrimental effect on the fen's delicate vegetation communities. The plan is to re-charge the water table using water from Monks Lode which has filtered through the chalk of the Newmarket Hills before flowing towards Wicken. Water taken from Monks Lode will be pumped under Wicken Lode and then lifted into a ditch using a small wind pump from where it will gradually spread out through the peat. The project is being funded by the Environment Agency and will contribute towards the Governments public service agreement target for 95% of Sites of Special Scientific Interest being in favourable or unfavourable recovering condition by the end of December 2010.

We are holding our first ever **Scarecrow Festival and Competition** over the weekend of 23-24 October. There are three competition classes: Individual – Under 11s, Individual 11+ (incl adults) and Groups (School classes, toddler groups, clubs, WI or scouts, brownies, guides etc).

You can choose any theme suitable for a family audience, although extra marks will be awarded for local relevance, such as fen characters or animals.

Please bring your entries along to Wicken Fen anytime from the 10th -22nd October where you will be given a competition number .The scarecrows will be displayed in fen cottage garden, along the trails and picnic area during the festival.

Other events during October include; **Mucky Pups** – pre-school fun for little fairies (18 months- 4 years) Thurs 14 Oct 1030 -1200; **Half Term at Wicken Fen**– follow our wildlife murder mystery trail, Mon 25 –Fri 29th; **Winter Wildlife** make bird feeders and food to help your garden birds through the winter months – Tues 26th ; **Batty Halloween** – come along in your spookiest outfit for some ghostly goings on Fri 29th; **Ghost Walk** (7+ years only please) Sat 30th 1830- 1930. Information and tickets for all events (early booking advisable) is available on 01353 720274

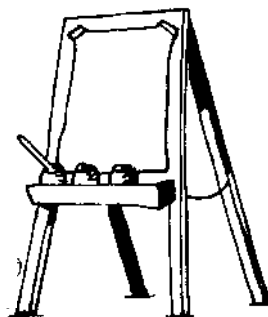
Howard Cooper
National Trust Wicken Fen

BOTTISHAM ART GROUP

We are a friendly and sociable group of people, mainly from Bottisham, Burwell and Lode, with varying degrees of artistic talent. We get together informally to draw and paint, without a tutor, in the Art Room at Bottisham Village College on Tuesday evenings (in term time) from 7.30 to 9.30 pm. If you would like to join us, just turn up with your art materials – you will be most welcome.

For more information email:

Fay at nic.bawtree@tiscali.co.uk.



THE LODE WHEEL IS TURNING!

It's long been known by villagers in this area that when the Lode mill wheel was turning there would be flour available at the back door. But until recently, the 18th century mill was in dire need of repair and had to lay idle for many months for a programme of works to prevent water ingress. At last we can bring the good news (if you haven't noticed the wheel turning) that the mill is back in action, and producing flour once again.

The mill also has a new Steward in Chris Stimson, who is as enthusiastic about the flour as the mill itself. "The grain I use at the Mill comes from fields at Wimpole Hall. I supervise the milling and see the flour come down the shoot and straight into packs. This is about as fresh as it gets."

Lode Mill is, as much as ever, more than a tourist attraction, and since its repair it is once again a fully-functioning producer of flour. There is a growing interest in food miles and the benefits of buying locally but people who make bread regularly know what a difference the freshness of flour can also make.

The mill is a truly fascinating place to visit, too. The heavy gearing mechanism can be seen in action on many days, thanks to a new tranche of volunteers, many from this area, and there is a thrill in hearing the water gush through the building.

Rachel Stock

PS. Even if the mill is not grinding when you visit, you can still buy bags of flour in the Anglesey Abbey Visitor Shop.

MONTHLY CRIME REPORTS – AUGUST 2010

Burwell: Between the 27th and 29th July at an industrial property on Weirs Drove, offenders have broken into the site and taken a number of drain covers. Between the 29th and 31st July on Grantchester Rise whereby a motorcycle was stolen from a residents parking bay.

On the 10th at 19.00 there was a burglary at a property in the High Street, a male offender was arrested at the scene and charged with the offence.

On the 11th between 10.00 and 13.00 a car trailer was stolen from a property on Ness Road

On 16th - 17th a vehicle has been scratched while parked on a driveway in Martin Road. Overnight on the 19th/20th, number plates have been stolen from a car on Grantchester Rise. Overnight on the 21st/22nd, a car has had all four tyres slashed in Westhorpe.

On the 23rd, a vehicle was damaged in Martin Road and finally overnight on the 24th/25th there was a burglary at a property on North Street.

Bottisham: On the 4th there was a burglary in the High Street

The Swaffhams:

Between the 29th and the 2nd there was a theft from motor vehicle in Commercial End.

Ian Hawkins

Notes from the Parish Council Meetings

Thursday, 5th August & 9th September 2010

John Covill chaired the meeting with 7 Parish Councillors in attendance. There were 5 members of the public present.

Public Participation:

East Cambridgeshire Local Development Framework with particular reference to – Site Allocations Development Plan Document Options Paper – Section 11 "Gypsies, Travellers and Travelling Showpeople".

At the August meeting, members of the Steering Group attended and gave a report on progress. They had secured written confirmation that ECDC would accept the submission of pre-completed questionnaires.

The Clerk was asked to record a vote of thanks to the Steering Group for their hard work and efforts in overseeing the process of completing and submitting the questionnaires to ECDC.

In support of the foregoing the Clerk was asked to write to John Hill, Chief Executive of ECDC noting that it was understood that the gypsy site element of the Regional Spatial Strategy had been scrapped by the current Government and thus requesting the ECDC's search for additional gypsy sites anywhere in the District should be abandoned forthwith. John Hill responded to this letter acknowledging the concerns raised and outlining recent guidance received from Government on determining the level of provision for travellers' sites now that the Regional Spatial Strategies were abolished.

At the September meeting, Cllr Allen Alderson reported that he had attended a meeting of the Strategic Development Committee where the need for travellers' accommodation was discussed. *Refer to Cllr Alderson's separate report in Crier.*

Correspondence for Consideration/Circulation:

CCC – *Library Service Review*: Consultation document re proposed changes in services due to Government cutbacks.

CCC – *Winter Service – Gritting Arrangements*: Details included a highlighting map showing roads covered as part of gritting schedule. It was noted that Cage Hill was not included and the Clerk was asked to bring this to the attention of CCC.

Matters Arising:

Footpath at The Beeches: ECDC confirmed that CCC would adopt this footpath subject to a number of works being carried out first including the installation of a handrail. A start date for the work was not known. The Clerk was to follow this up.

Review of Grasscutting Contract: This contract was coming to the end of a three year period and new tenders were to be invited for consideration.

ECDC had confirmed that they would be taking over responsibility for cutting its areas in the Parish.

Progress Report – The Pound: Paul Latchford had put together a Design & Access Statement as required by ECDC. This was agreed and was to be submitted to ECDC for Listed Building Consent.

Reports:

CCC: Cllr David Brown reported

ECDC: Cllr Allen Alderson reported

Consideration of Planning Application for Land Adjacent 15 Cage Hill – *demolition of existing garage and garden store and redevelopment of site for 2No four bed houses with garages.* Ref: 10/00567/FUL: There were no objections or comments.

Consideration of Amendment to Planning Application for the Manor House, 37 Lower End – *extensions and alterations, including curtilage buildings.* Ref. 10/00376/FUL: There were no objections or comments.

Consideration of Planning Application for Regent Farm, 7 Heath Road – *construction of single storey timber building for business/ domestic office.* Ref: 10/00593/FUL: There were no objections or comments.

Clerk's Report:

Dog Bins: ECDC confirmed that the dog bins are emptied once a week by Veolia. Details of locations were confirmed to ensure none were missed.

Grit Bin – Fairview Grove: This was to be installed once location approved by CCC Officer.

Footpaths: Station Road and Rogers Road footpaths had been 'sprayed off'.

Annual Audit: External Auditors had completed their audit of the Parish Council accounts confirming all was in order.

Faulty Streetlights: These were reported for repair.

Accounts for Payment: These were agreed.

Parish Councillors' Reports:

Steve Kent-Phillips told the meeting that the footpaths at Tothill Road had been marked out for resurfacing and hopefully this would be carried out shortly.

Peter Hart reported that the fly-tipping at Barston Drove had still not been removed and asked Cllr Alderson to follow this up as it had been reported on several occasions.

John Covill reported that he had been asked for the Parish Council's views on the possibility of building some affordable housing units at the bottom of the Lower End site ('Dencora' field) with perhaps some commercial or market value units at the top of the site. *Following discussion it was agreed that the possibility of some affordable housing units mixed with*

market value housing should be supported. There were some concerns expressed about whether commercial buildings would be approved but it was felt that this would be a matter for ECDC.

Peter Hart reported the following:

Footpath No.11 was now fully re-opened (Village Car Park – Station Road)

The hedgerow on Station Road needed cutting back. *The Clerk was asked to contact those responsible.*

Overgrown hedges, etc., on footpath at the Coopers Green end needed cutting back. *Clerk to contact owners of properties backing onto footpath.*

Open Question Time:

August meeting:

Adrian Dickens explained a little more about the affordable/market value housing on the Lower End site.

David Greenfield told everyone about the problems caused by heavy rain and the inability of the gullies/drains to cope on Green Head Road. He had phoned CCC Highways about this and they had visited the area to inspect. Adrian Dickens confirmed that there were similar problems at the bottom of Cage Hill and Lower End where the water was flowing out of drains during periods of heavy rain and flooding the road.

If anyone would like further information on any of the above items, please do not hesitate to contact the Clerk.

The next Parish Council meeting will be on Thursday, 14th October 2010, starting at 7.30pm in the Village Hall.

All are welcome to attend.

**Karen King – Clerk to the Parish
Council
Tel: 742358.**



LET'S DANCE

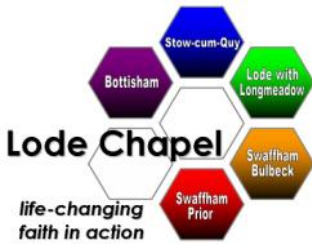
Come and join us dancing on Saturday evenings in the Main Hall at Bottisham Village College. We will have music for Ballroom, Latin American and popular Sequence dancing.

Dates: 2nd October, 6th November and 4th December.

Time: 7.30pm to 10.30pm.

The cost is £10 per couple, which includes interval tea/coffee. You are welcome to bring along your own refreshments. There is ample parking on site.

For further information please contact: Frank and Sue Hancocks, 01638 741159 or check out our website: www.letsdanceclub.org.uk



The Miracle of Multiplication

I wonder if you've heard those stories about the cash point machines that, because of some glitch in the computer, give out double or even treble the amount you've asked for. It's amazing how news of such an error spreads and a queue quickly forms at the ATM as people seek to benefit. In this case, someone somewhere loses out – but the foundations of our capitalist economy are built upon the premise that money does indeed multiply itself.

That, of course, is why the investors in Dragon's Den are willing to give their cash over to the entrepreneurs – their hope is that they will get more out of the new company than they have put in. In developing countries micro-loans have become a successful way for people to escape the poverty trap. A small loan, to help buy a goat for example, enables the family to earn money from the milk – enough to pay back the loan, look after their family and soon buy a second goat and so on.

This 'miracle of multiplication' seems to be a principle present in the nature of our world, and if it's true for the economy, then it's especially true in agriculture. Anyone with an allotment knows the way that a few seeds become a pile of fruit and vegetables by the end of the season. If the farmer was able to dig up only what he planted, there would be no point to it – but year after year he reaps so much more than he sows. To me this harvest principle tells us something of the generosity and grace of God. In this 'miracle of multiplication' the gifts of seeds, soil, sun and rain are transformed into the good food which sustains us day by day.

God invites us to participate in this process, but it's not just limited to agriculture or to the economy. Life itself seems to be guided by this principle. The people who refuse to sow acts of kindness, seem to reap a life of loneliness and misery; whilst those who offer of themselves seem somehow, in their generosity, always to receive back more than they give. Think about the joy that parents experience as a result of the love and care that they give to their children; or consider the enjoyment that many volunteers experience as they contribute their time for the benefit of a good cause.

This harvest, at our Kids Club on 10th October, we'll be making a collection of items that will be donated to Jimmy's Nightshelter. Why not join us as together we realise the truth in the words of Jesus, that it "It is more blessed to give than to receive."

Simon Goddard

Sundays in October

- Sun 3rd, 10.30am – Launching the Year with Prayer (Chapel)**
- Sun 3rd, 5.30pm – 'Sacred Space' Contemplative Service (Chapel)**
- Sun 10th, 10.30am – RE:NEW Kids Club and Café (School)**
- Sun 17th, 10.30am – RE:NEW The Bigger Picture (School)**

Sun 24th, 10.30am – RE:NEW The Bigger Picture (School)

Sun 31st, 10.30am – RE:NEW The Bigger Picture (School)

For more information please contact: Rev. Simon Goddard.

Tel: (01223) 812881

Email: simon.goddard@re-new.me.uk

Web: www.re-new.me.uk / www.lodechapel.org.uk

Roman Catholic Church, Newmarket Parish

Masses: Newmarket: Sat 1830; Sun 1030;

Kirtling: Sun 0900;

In Bottisham Parish Church, Sun 0900 (Served from Cambridge).

FREECYCLE



If you have any offers or wants, please contact me by the 14th of each month on jun.thompson@tiscali.co.uk, phone on 01223 813362, or drop a note through 23 Longmeadow. Everything is free and nothing is expected in return. Should you be unsuccessful, please try your offers/wants on <http://freebiefreakz.org> or <http://groups.yahoo.com/group/cambridgefreecycle/>

Offers

Bissell carpet cleaner for hard floors. A single bed (plus mattress if required). Wooden headboard. Only used as a spare bed so in good condition. Trish c813030.

Shower Unit in perfect condition, old but solid suite (green) in quite good condition. Mrs Coleman, c811370.

Magnetic GB sticker; Large brown bed for cats; turquoise plastic water/food tray for cats (rectangular moulded with 2 sections); dark brown ceramic bowl with CAT written on the side; K & D design child's booster chair for mealtime (with tray). Jun c813362

Wanted

Your old light fittings, brown bakelite switches, iron conduit and switches, bulb holders and holders. Sheets and bits of bakelite. Postcard rack (carousel if possible). George 07895064727.

Dear Friends,

I was reading the other day that UK grain farmers are expecting to rake in bumper prices for this year's harvest on the back of strong rises in the price of wheat and barley in the past few weeks, buoying the arable farming sector after last year's difficult season. I understand that a record drought and disastrous wildfires have destroyed much of the harvest in Russia, sending wheat prices rocketing and prompting a ban on exports. I also understand that farmers across the south, the east and Midlands, farmers are well into their wheat harvest. But many in the south-east, east anglia and the midlands have had a more difficult time as the rain has lashed their fields.



Farming is an industry that is so often unpredictable, and so much at the mercy of the weather, and I am sure our farmers will be heartedly grateful this year when the harvest is safely gathered in.

Gratitude is the key word here. A French proverb says that *'Gratitude is the heart's memory.'* And so it should be, but so often we make the mistake of taking our blessings for granted rather than counting them and valuing them. It was the great Benjamin Franklin who once wrote: *'When the well's dry, we know the worth of water.'*

	ST MARY'S Swaffham Prior January 2010
Sun 3	11:00am Matins
Sun 10	11:00am Holy Communion
Sun 17	11:00am Harvest Festival
Sun 24	10:00am Benefice Communion
Sun 31	8:00am Holy Communion BCP 6:00pm Sung Evensong

Many of our Churches will be giving thanks for the gathering in of the harvest this month, and Christians believe that that best way to express gratitude is to give generously in return. St Paul saw that principle working itself out this way: *"Remember this: Whoever sows sparingly will also reap sparingly, and whoever sows generously will also reap generously. Each man should give what he has decided in his heart to give, not reluctantly or under compulsion, for God loves a cheerful giver. And God is able to make all grace abound to you, so that in all things at all times, having all that you need, you will abound in every good work."*(2 Corinthians 9:6-8)

J. L. Kraft, head of the Kraft Cheese Corporation, who had given approximately 25 percent of his enormous income to Christian causes for many years, said, *"The only investments I ever made which have paid constantly increasing dividends, is the money I have given to the Lord."*

Fritz Kreisler, the distinguished violinist saw

that need to give in response to the blessings he had received as being of paramount importance, and he once wrote: *"I never look upon the money I earn as my own. It is public money. It is only a fund entrusted to my care for proper disbursement. I am constantly endeavouring to reduce my needs to the minimum.... In all these years of my so-called success in music, we have not built a home for ourselves. Between it and us stand all the homeless in the world."*

From the beginning of his business career, John Wanamaker, the great businessman from Philadelphia, is said to have dedicated one tenth of his increase to the Lord. Likewise, William Colgate, the great soap, toothpaste and perfume manufacturer, rose to fame and wealth while consistently paying a tithe of his earnings to God. This he recognized as the minimum requirement designated by divine wisdom; and year by year as God prospered his efforts and multiplied his wealth, Mr. Colgate gladly gave far more than a tenth. Today a great Christian university stands as a monument to his fidelity and generosity.

Jesus says *"For where your treasure is, there your heart will be also"* (Luke 12:34). So let us count our blessings, and live out that spirit of generosity in our lives, by giving to those in need, out of thanksgiving for the blessings we have received in our lives.

May God bless you all,

David

Bottisham Village College Community Education

**If you have a day to spare,
try one of our Saturday Workshops this Autumn ...**

Saturday 9th October

Paper Jewellery Day

Web Page Design

Woodturning

Saturday 6th November

Dressmaking

Felt Making

Photoshop

Playing with Print (textiles)

Woodturning

Saturday/Sunday 20th/21st November

Stained Glass Making (over two days)

Dates for Your Diary October 2010

Sat	2	Let's Dance, BVC, 7.30pm
Wed	6	Neighbourhood Panrl Meeting, 7-9pm
Sat	9	Nearly New Sale, 11am—3pm BVC Workshop
Thu	14	PC Meeting, 7.30pm
Sat	16	Harvest Supper
Mon	18	WI, VH, 7.30pm Crier Copy Deadline
Tue	19	Mobile Library, Cage Hill 2.45-3.15pm Chapel 3.20pm-4.00pm
Thu	21	Mothers' Union, Lode Chapel, 32.30pm
Sun	31	Choir Rehearsal, 4.30pm
Nov	13	Quiz Night, 7.30pm VH

Club	Contact	Tel.	Date	Time	Place
FOSPS	Clare Freeman	741316	2 nd Mon of Term	8pm	Village School
Baby & Toddlers	Jessica Shakeshaft	744266	Fri	9:30-11:30am	Village Hall
Jamsing	Jo Pumfrey	741376	Tues (term)	9.20-12	Village Hall
Cubs	Tim Doe	743656	Weds (term)	6:00-7:30pm	Village School
Reading Group	Brenda Wilson	743937	1 st Weds of month	8:00pm	(See Crier)
Scouts	Tim Doe	743656	Weds (term)	6:15-7:45pm	Village School
Village Gardeners	Margaret Joyce	744390	3 rd Tues of month	8:00pm	Village Hall
WI	Pat Cook	742224	3 rd Mon of month	7.30 pm	Village Hall
Youth Club	Alan Badcock	742228	Tues	7-8:30pm	Youth Club Hut
			Thurs	7-10:00pm	

Village Clubs & Societies