



The Swaffham Crier

Volume XXXIV Number 7

July 2010



Editorial

NO SOONER SAID THAN DONE — the *Crier* is beginning to feel like the *Murdoch* Empire: one adverse comment from us and everything is to be put right at once! We are of course referring to the *Uglygate*, the crooked new Dyke gate that was the subject of last month's editorial, and to our delighted surprise is now to be moved 40 meters away (*see Letters*) and will match the other gates.

As every reader with email will know, getting round to complaining is so much easier when you don't have to find an envelope and stamp, and NOW could not be a better time, with all those *cuts* looming large over everybody's heads. We need to make sure the right things are cut! Yes, the *Crier* has a list, and they'll none of them be missed....

But **STOP PRESS:** the District Council wants to site **6 large Gypsy pitches** on Heath Road (see map), just adjacent to Goodwin Farm, and we have until August 16 to express our views. Readers should go to www.eastcambs.gov.uk/local

-development-framework/
current-consultation (you will need to do **find**

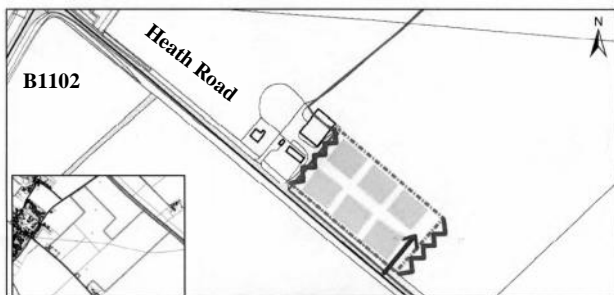
Goodwin Farm on your browser if you don't want to get bogged down in the various *visions* and Farsi translations etc.) or email

ldf@eastcambs.gov.uk

or phone 01353665555.

This is something of a major venture for this little village, and the *Crier* will be asking if it is not possible to hold an old-fashioned meeting at the Village Hall instead of this "web-consultancy"—navigating through this site is wholly non-obvious!

Caroline Matheson



Region to be given over to Gypsy Camp

Cover Picture: *The Two Churches* by Thomas Newbolt

Regulars

Letters	2
Our Reporter	4
Let the Bells Ring Out	11
ClIr Brown	17
CROSSWORD	14
Chris Herring's Crime Report	
Bon Mot	25WI
Mothers' Union	26
Village Gardeners	27
PC Meeting	30
Simon Goddard	32
Freecycle	33
David Lewis	34
Church Services	32-34
Diary & Clubs	36

News, Views & Reviews

Fountain Group Art	6
Bridge Over Reach Lode	7
Village Hall Charges	12
Coup de Grass	13
Cage Hill Soap Boxes	16
Our Man at the Village	
Assembly	18
Strawberry Teas	22
Prospects Trust	28
Norfolk Hospice	29

What's On

Moveable Feast	8
Dog Show	8
Open Studios	9
Harvest Show	10
Harvest Supper	19
Anglesey Abbey	20
Wicken Fen	21
Cantilena Singers	25
Bottisham Community	
Education	29

For a Good Home

4 Kittens	27
-----------	----



Letters to the Editors



Dear Editors,

New Devil's Dyke Gate (*see Editorial*)

In response to your recent query I am replying on behalf of the Devil's Dyke management steering group.

The fence you refer to was unfortunately erected in the wrong location and will be moved 40 metres to the south. The gate will also be replaced with a similar self shutting gate to those present elsewhere along this section of the Dyke. I can not guarantee that the gate will not appear crooked, as it will be essential that it is self closing to prevent sheep from straying out of the compartment in which they have been put.

This extra line of fencing is required to better control the grazing on the Galley Hill section of the Dyke (the tallest & highest section and first one south of the Burwell Road). Part of this area is infested with rabbits which have severely damaged the grassland and have increased the risk of erosion to the ancient monument. The extra line of fencing will enable sheep to be grazed on the part of this compartment that retains grass, without causing further damage to the sparsely vegetated areas.

Martin Baker

Conservation Manager (Cambridgeshire & Peterborough)

Dear Editors,

Revised Village Hall Charges

The Village Hall Management Committee recently decided to simplify the charging system for hiring the Village Hall. We now have a straightforward cost per hour, based on which room or rooms are being booked, plus daily rates for longer bookings (see attached list of fees).

Village residents will get a 20% discount on these rates, and, as before there is a 10% discount for multiple bookings. The special rate for Children's Parties is also still in place.

This change to the system has been made in response to the demand from many potential hirers to "Just tell me how much it costs to book the Village Hall by the hour"; it makes the Hire Charges and the discount system clear and open, and hopefully, from Mary's and my point of view, will be easier to implement.

As with any change, there will be some winners and some losers, but we have tried to minimise the impact on any particular group and hope that everyone will continue to enjoy using the lovely Village Hall that we are so lucky to have.

Christine Carrington

Assistant Treasurer

Swaffham Prior Village Hall Management Committee
2 Heath Rd

Dear Editors,

Don't Feed Pearl!

We adopted Pearl when Hilary Sage moved to Burwell, and she has settled happily into her new home, completely 'ruling the roost'. She was never slim, but unfortunately she has put on a lot of weight, causing her pain when jumping, and putting her health at risk.



Pearl is on a very strict diet at home, but is still gaining weight! We suspect someone may be feeding her, probably out of kindness, as she is expert at looking hungry! PLEASE HARDEN YOUR HEART for her health's sake - she is fed an adequate and nutritious diet at home, and is much loved. The same health problems occur for obese cats as for people!

Thank you,

Trish Whitehead

Dear Editors,

Sponsored Swim

I would like to say thank you to everyone for their sponsorship, moral support, coming to the quiz night and all well wishes, thank you very much! I hope to do you proud! At this point in time I have completed my 6 hour qualifier swim in Lake Windemere. I am about to go on a swim camp on the West coast of Ireland to acclimatise to colder water than the English Channel. The main hurdle for me now is the cold water, it is a couple of degrees less than this time last year due to the bitter winter that we had.

So far we have raised over £2,000, and hopeful of more

I would like to say thank you to (amongst many) Nifty for organising the Quiz at Lode Social Club which was a great success - raising over £600 on the night, thanks to my cousin Olly for being my safety crew in the Cam, and thanks to Micheal of Nature Health, Mill road in Lode for massaging my aching shoulders.

I am writing this on the 8th June 2010, so I have yet to swim the Channel, and the result is still to be written, I pray and trust it will be a successful one.

This journey has been an amazing physical and emotional rollercoaster and I would not have changed any part of it, it has been a real "life affirming" time, it makes you feel alive! I will be feeling very alive in the cold water of the English Channel! haha!

If you would like to donate to a great cause, Magpas, you can do so at Lode Post Office, The Swan pub at Quay, or online;

www.lloydsgardens.me.uk

and follow the link to my just giving page.

Lloyd

From our Reporter at the Parish Council Meeting

BEFORE THE MEETING BEGAN, Geoffrey Woollard confessed to feeling a little overwhelmed with Ivy especially after a dream in which he became encircled with the stuff. Other members assured him that it was probably true as it had been reported in the previous month's *Crier*. One or two as usual doubted the veracity of the press.

After Apologies and Declaration of Interests came "Public Participation" during which any villager can raise questions or make comments, and be given the views of the PC, ECDC and CCC representatives. This occurs right at the beginning of the meeting for the convenience of the public, and it is to be hoped that more will take advantage of the opportunity. If you have a grouse or question this is the time to raise them.



David Brown presented his report and listed the range of committees on which he has been appointed. One must really admire the amount of time our district and county councillors spend on our behalf. Geoffrey asked David whether it is true that when the CCC has land to sell it is "obliged to get the best possible price". Reference was made to the 1979 Act which specified that initially any CCC land should be offered to the local PC and to environmental groups.. This was a prelude to Geoffrey raising the question of the CCC 24 acres of farmland in Reach which has just become vacant as the tenancy has come to an end. Geoffrey feared that it is being sold to the National Trust without any other option being considered. He was still incensed about the sale of the 103 acres of Hurdle Hall to the National Trust at what he considered to be the knock down price of £300,000 rather than the £600,000 he reckoned could have been gained on the open market.

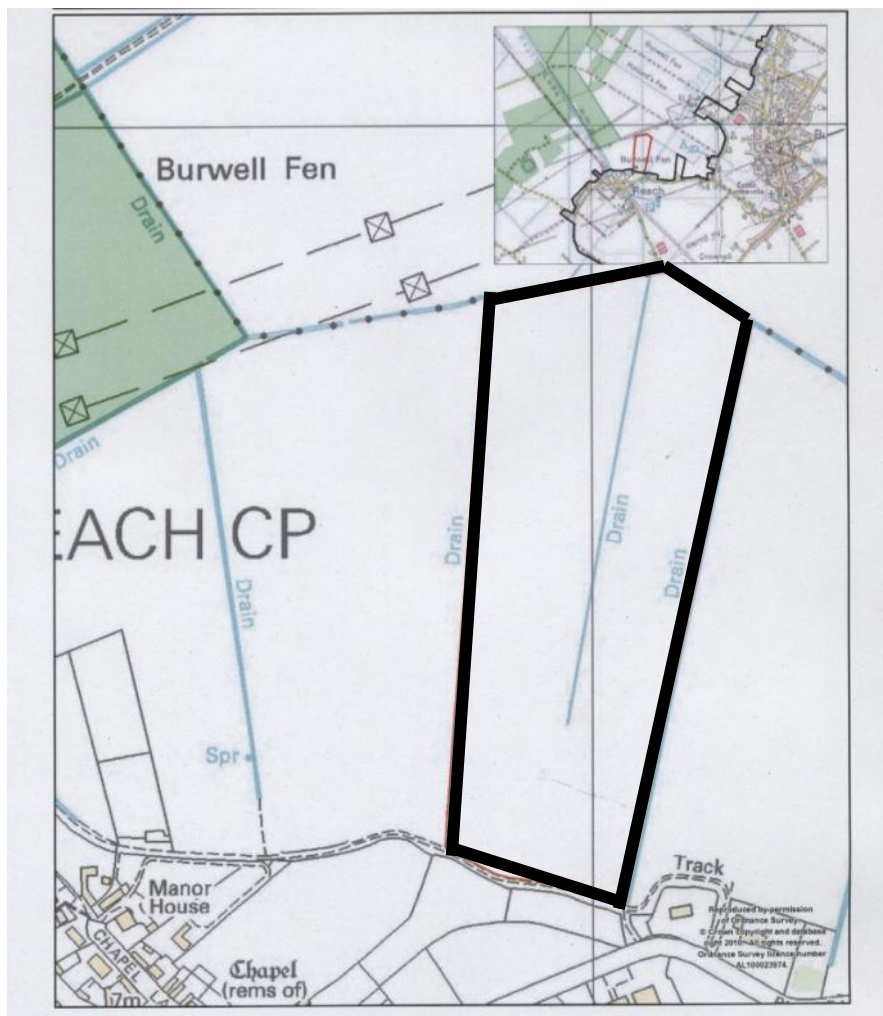
Peter asked why the 24 acres had to be sold at the end of the tenancy. John Covill explained that it was an isolated piece of land which CCC wanted to be rid of. But it is adjacent to Reach and it is not immediately close to Wicken Fen. Geoffrey suggested that people in Reach might well pay Paddock Prices for part of it, and there were also three local farmers interested. Allen reported that at the last Reach PC meeting 35 people attended and 70% wanted part of the land for community use. Sandra attempted to speak but Geoffrey refused to give way and finished his argument about the need to go on to the open market with sealed bids. Having finished he apologised to Sandra and stood down. This was all very civilised and polite just like Parliamentary Question Time under the Coalition Government.

Sandra said that having sealed bids could lead to "undesirables" obtaining the land. Not at all, said Geoffrey, you vet the sealed bids and throw out the undesirables.

Really!, I thought. Is that how it works? It reminded me of my time in the early sixties working in an antiquarian bookshop in St Pancras when more people voted and politics was more volatile. One of our regular customers was a very respectable and senior council officer. I asked about the possibility of a British Communist being elected. He looked me in the eye and said it wouldn't happen. I

repeated my question and said that if he got the most votes he would have to be elected. Again he looked me in the eye and said “He would never get most votes. It would not be allowed to happen.” I was young and did not know whether to be shocked or comforted by the defence of our democracy.

We all know Geoffrey has a bee amongst the Ivy in his bonnet about the Wicken Vision but he does have a point when he asks where all the money comes from and whether local views are being ignored. I fear that – with CCC, South Cambs, ECDC, Cambridge City, Natural England, EEDA, Greater Cambridge Partnership, Europe, Cambridge Horizons, Environment Agency, Sustrans, Communities and Local Government, Vividor Credits, Esmée Fairburn, Tubney, and the Heritage Lottery Fund supporting the NT – that with all this support Geoffrey is indeed a David against a mighty Goliath.



Whether you agree with Geoffrey or not he does have a point about the Reach 24 acres. The map on page XXXX illustrates the threat to both Reach and Burwell. Nothing more graphically shows how the Wicken Vision wants to come up to the very doors of these villages.

After this the PC settled down to a range of local business. Ely news, travellers, garbage, cemetery water cut off by the contractors who are revamping St. Cyriac's, bumps in Rogers Road pavement (I've often asked the question but no-one has ever said who Roger was), BT to maintain our phone box as it's under a conservation order, application to Minor Highway Improvements for repair of footpath down Station Road, and a handrail requirement in the Beeches.

There was a planning application for a complete restoration of the extraordinary and wonderful barn at the rear of Old Barn House. Because it is Grade 2A listed it needs to be restored exactly as the original. There was much speculation about its original use and eventually it was decided that it was possibly an eel smokery. More information is required. The other wonderful barn which used to adjoin Old Barn House before its collapse was only Grade 2B listed and therefore had only to be a little like the original. Steve explained this to the meeting. I'm not sure how many people appreciate the distinction between Grade 2A and Grade 2B listed buildings. This particular barn is also historically important because legend has it that this was where the Charities distributed free potatoes to those in need during the 1950s.

The Dog Doo Doo Bins have yet to arrive though I doubt if these will help the problem of some dog owners not picking up Doo Doos. Meantime I hear that dog owners are keeping their heads down with some authorities banning dogs from parks and insisting on short leads only. In a small village like this surely it is possible to find and discourage the culprits without becoming hysterical and over the top and involved in greater expense. If that is the only problem of this community we are lucky.

But at least the disabled are now being looked after as their numbers have risen so much that the Village Hall Committee has ask for two "Disabled Parking Signs".

Alastair Everitt

The Fountain Group Art Exhibition

**Weekends of 10th, 11th, 17th, 18th July 2010 at
St. Cyriac Church, Swaffham Prior, Cambridgeshire.**

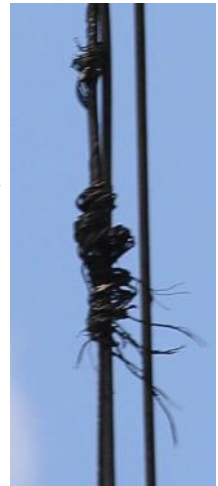
11am – 6pm. Free entry.

Bridge over Reach Lode



The new Reach Lode Bridge being hoisted into place. The first lift had to be abandoned after the cable frayed and took three hours to repair, eventually being successfully lifted at 4pm.

Many thanks to John Covill for these pictures.



Moveable Feast

THIS YEAR'S moveable feast is to be held on Saturday 18th September, 7.00pm start, and is as you know, for those of you who have been before, an event not to be missed.... three courses in three different places - sounds like madness but you have to be there. Venues yet to be confirmed but will of course, as in previous years, be spectacular!

If you haven't participated before make this year your first - there will be excellent food and warm hospitality to be had at each and every course. Numbers are of course restricted and so it is on a first come first served basis and newcomers to the village are especially welcome. It is a wonderful way of meeting other village folk in relaxed and convivial surroundings. Proceeds to St. Mary's Church, it is really good fun, where else do you get three courses, wine, exceptional company and all for £17.50 a head??

Waiting by the 'phone for your call to book a place and for offers to host a course!

Janet Willmott

New - Dog Show

**Saturday 11th September, Village Hall,
2pm**

This is an exciting new event to the village which will run alongside the Harvest Show. There will be six classes for all ages and abilities including fancy dress (both dog and owner) and even if you don't own a dog and haven't been able to borrow one there will be a "stuffed toy dog" class as well! Look out for posters around the village nearer the time with full details or contact Janet Willmott on 743472.

Eds' Dog →

**Who's going
to win
then....**





Open Studios in Swaffham Prior

July is fast approaching and followers of the annual Cambridge Open Studios event will be looking forward to visiting artists' studios and other free exhibitions throughout the county. This year Swaffham Prior has two working studios opening within the event with Lorraine Izon (Lower End) and Paul Abbott (Mill Hill) both taking part again.

"It's a great way to spend an afternoon or weekend getting to see the extraordinary variety of work on show" said Paul, an enthusiastic painter for ten years, "and as one of the artists you get the kind of feedback you would never receive from an ordinary exhibition".

The majority of Lorraine's work is inspired by the shapes, forms and textures that are found in nature. It features birds, plants and animals in a range of sculptural pieces, tiles, ceramic pictures, bowls, bottles and vases. "Although I have been a potter for many years I still find inspiration for new works right on my door step. Living on the edge of the Fens is great, 10 minutes walk and I am in another world" she said. Lorraine will be opening the studio doors at Meadow View, 24 Lower End, Swaffham Prior on the three weekends of 3/4th, 10th/11th and 24/25th of July and will also be showing a selection of drawings, prints and cards.

Paul paints mostly landscapes with oils, and although recent inspiration has come mainly from the local rural landscape, there are still some beaches, huts and seascapes in the mix. Colours are applied thickly and taken from a vivid palette, mostly raw from the tube giving his paintings a vibrant and optimistic quality. Paul will be opening his studio on the weekends of 3rd/4th, the 10th/11th and the 17/18th July, at The Mill House (next to Foster's Windmill) Mill Hill, Swaffham Prior.



Copies of the Cambridge Open Studios guidebook listing participating artists and the weekends on which they are open are available free of charge from local shops and public places and from participating artists. Full details are also available on Cambridge Open Studios' brand new website at www.camopenstudios.co.uk. All venues are open from 11am to 6pm, entry is free and there will be a wide range of work for sale at most venues from postcards to substantial original pieces.

Paul Abbot

THE HARVEST SHOW IS BACK!

After a year's absence, the Swaffham Prior Autumn Show will be back on the afternoon of **Saturday 11th September**.

So, if you've been growing vegetables and want to show everyone how well you coped with the horrible weather conditions earlier in the year, this is your chance. If you haven't, there is still time to get out in the garden - now that nicer weather is here - and grow some prize-winning veg.

You can still sow beetroot, carrots, French beans, lettuce, radish and turnips. Alternatively you could get surplus plants from neighbours or buy them from plant centres; possibilities here are tomatoes, peppers, aubergines and squash. In addition to vegetables, fruit and flowers can also be exhibited. If your talents lie more in the kitchen, you could try your hand at making cakes, preserves and wine.

Get the kids involved too. As well showing their vegetables, there are a couple of categories just for them.

The full category list for this year is as follows:

VEGETABLES:	cont.	FRUIT:	PRESERVES:
Beans (French or runner)	Squash or marrow	Apples, cooking	Jam
Beetroot	Tomatoes	Apples, dessert	Jelly
Carrots	Tomatoes, cherry	Pears	Pickle or chutney
Leeks	Any other vegetable	Soft fruit	Cake
Lettuce		Stone fruit	Biscuits
Onions	ADDITIONAL:		Alcoholic drink
Parsnips	Trug of mixed veg	FLOWERS:	
Peas	Mixed herbs	Roses	CHILDREN:
Potatoes	Eggs	Mixed flowers	Miniature garden
Peas	Giant vegetables	Other	Vegetable animal
Potatoes	Oddly shaped vegetables	Pot plant	
Shallots or pickling onions		Arrangement	

Further details will be published with the entry form.

The newly inaugurated Swaffham Prior Dog Show will take place on the morning of the Autumn Show - for more information about entering, contact Janet Wilmott.

Chris Carrington



LET THE BELLS RING OUT

IT IS THE CUSTOM THAT THE BELLS SHALL RING TO ANNOUNCE THE START OF THE SOAP BOX CHALLENGE.

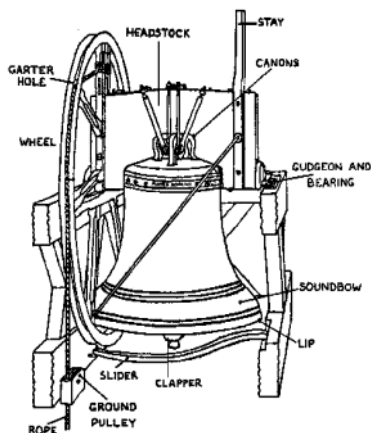
This year a coach load of bellringers from Cuxton in Kent arrived for the honour and they gave an exceptionally good ring from 10.15 to 11.00. That was the nearest we could get to the 11.30 start but it did show the village that major events (including the Feast) were about to happen.

About 20 of the coach were non-ringers who had come to see our two churches. They were introduced to the joys of St. Mary's, especially the War Memorial Windows which never fail to astonish.

St. Cyriac's was also visited and after the long coach journey they were most interested to know that in due course there will be a loo. They asked what was behind the North Transept seven foot high screen and were astonished to learn it was for chair storage. But what's wrong with where the chairs are now, they wondered. They also wondered why the loo height had to stretch right across the South Transept. I explained as fairly as possible that the architect wished it all to be as neat and symmetrical as possible, but many of those wise heads were not convinced – apart from one who thought it “looks very nice”. Others muttered about Goths and Vandals. “How much did all this cost?” they asked. I know not but it could be quite expensive once all costs including architect's fee are included.

All the changes can be seen during the Art Exhibition showing the paintings of Hannah Webb and the Fountain Group during the weekends of 10, 11, 17 and 18 July. There will be an opportunity to record your thoughts and views.

Alastair Everitt





SWAFFHAM PRIOR VILLAGE HALL HIRING COSTS

STANDARD HOURLY RATES

Whole Hall	Main & Small Halls	Main Hall only	Small Hall only	Meeting Room only
£18	£13	£9	£7	£7

DAILY RATES

Whole Hall	Main & Small Halls	Set up
(includes use of Meeting Room)	(no use of Meeting Room)	(from 2pm day before)
£200 per day	£150 per day	Additional half day

SPECIAL CHILDREN'S PARTY RATE

Main & Small Halls

(up to 3 hrs, ending by 6pm; children under 12yrs)

£25

DISCOUNTS

Swaffham Prior Residents	20% discount
Multiple bookings (5 or more on same form)	10% discount

Hirers must comply with Booking Terms and Conditions

CONTACTS

Bookings:

Mary Charlesworth:
07501 230256

Invoicing:

Christine
01638 741659

Carrington:

Coup de Grass at the Village Hall



POPULAR BLUEGRASS BAND, Coup de Grass, returned to Swaffham Prior on Saturday 19 June for an evening of close harmony vocals, dazzling instrumentals and spontaneous banter; front man, Keith Pearson, surpassed himself by joking with a group of Dutch visitors – in Dutch! The evening started with support from the SPSPs guitar group, Helena Pumfrey on fiddle and Minnie Willmott's lovely singing (shame about the rhythm section, Minnie!); grateful thanks to Andrew Noyes for putting together the supporting acts. Coup de Grass was on sparkling form and greatly appreciated by the capacity audience. Thank you to all who helped on the evening, and those who moved, erected and dismantled the stage before and after; we were delighted to raise just over £300.

Dee Noyes

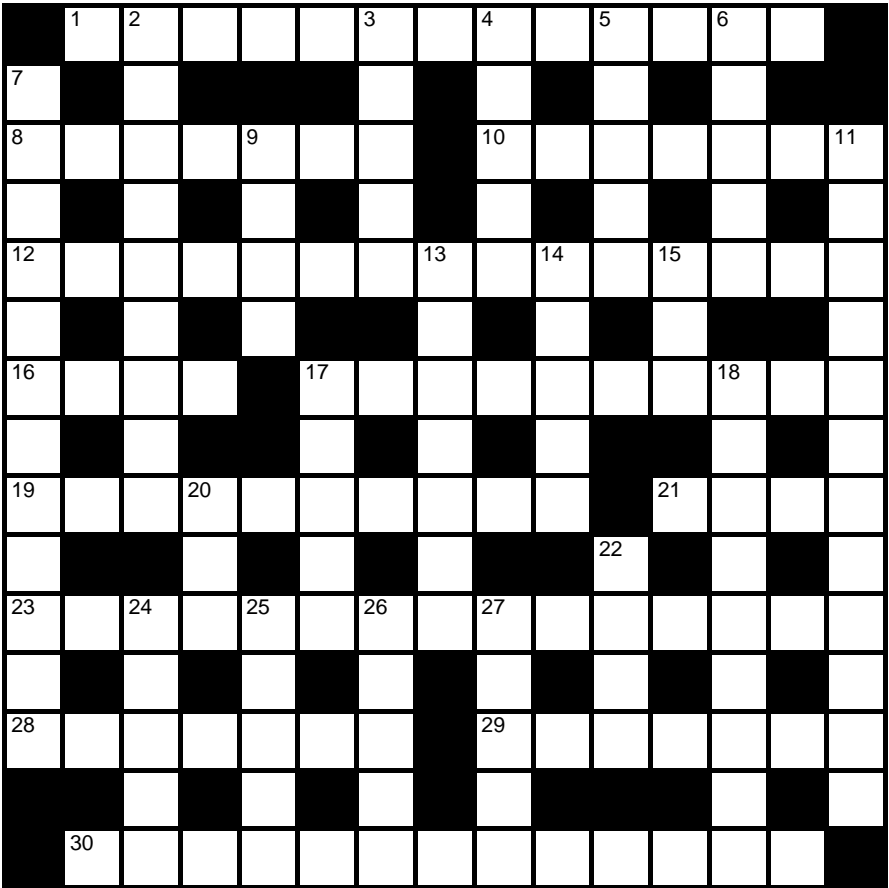
Crossword Number 70

Sponsored by **The Red Lion**

Compiled by

Ounce

This month's puzzle is a simple cryptic crossword. Send your answers to the editors by 18 July 2010. The first correct solution out of the hat will win a free meal for two at the Red Lion—See the Manager at the pub for full details.



Name:.....

Adress.....

.....Tel:.....

Across

- 1 Eccentric covertly bit us in an intentionally unhelpful way (13)
- 8 Nothing to lose from awkward question in coroner's court (7)
- 10 Family power (7)
- 12 Pulverised chartreuse noses indicate perfidiousness? (15)
- 16 Learn by this, in manner of a parrot evidently (4)
- 17 Exercise for one hand only? (4-6)
- 19 Teetotal linesman revised chapter for example (10)
- 21 Plant, Vera for example found in corneal oedema (4)
- 23 One who works the land for pleasure oddly, rang me about metal fern (9,6)
- 28 Why, we hear, go back wounded for curdled milk? (7)
- 29 Sank wrecked (intact I floated) (7)
- 30 Formal expression of disapproval when fourteen coves mingle (4,2,7)

Down

- 2 Strangely, the Basque leaves (9)
- 3 Loose in hunt, i.e. chase (5)
- 4 Orange dance? (5)
- 5 Five frozen desserts? Sinful habits! (5)
- 6 Belgian city for example, in untruth (5)
- 7 Distressingly, buildings try falling down (12)
- 9 At first, Edward and Charles have a peace, it's said (4)
- 11 Minimum acceptable for perverse stew in rice (7,5)
- 13 Mutt departs unorthodox triumvirate

for Mediterranean coast (7)

- 14 Shaun Fitzgerald admits "In poor shape" (5)
- 15 Tate character takes article from bread (3)
- 17 Loud gangster joins Bridge opponents? Untrue (5)
- 18 Princess and mongrel corrupted forty-niner for instance (9)
- 20 Ancient Egyptian disapproving sound (3)
- 22 Dull boy? (4)
- 24 Black integration organised without Titian (5)
- 25 Behold, employ parasite (5)
- 26 Logo found when doctor originally took in furniture (5)

Solution to crossword no. 69

I	N	S	E	C	T	R	E	P	E	L	L	E	N	T
N	T		A		E		U		L		L		I	
C	I	R	C	L	E	T		B	O	A	T	I	N	G
O		A		L		C		B		M		T		H
N	I	N	J	A		H	E	R	B	A	L	I	S	T
V		G		G				A				S		R
E	Y	E	S	H	A	D	O	W		S	E	T	T	O
N				A		Y		L		L				P
I	N	C	A	N		S	Y	S	T	E	M	I	S	E
E		A				P				E		N		W
N	O	N	P	A	R	E	I	L		P	U	K	K	A
C		T		D		P		O		L		L		L
I	T	A	L	I	C	S		O	B	E	L	I	S	K
N		T		E		I		S		S		N		E
G	R	A	N	U	L	A	T	E	D	S	U	G	A	R

We congratulate Daimon O'Dowd, the winner of last month's competition, who should collect his prize certificate from the editors. Honourable mentions go to Jenny Brand, Tansy Budd and the Editors.

Cage Hill Soap Box Rally



The undisputed winner effortlessly rounds the bend to the Lower End finish. This year's contest saw competitors attempting to turn *right* at the bottom of Cage Hill (last year it was *left* into the High St, but the new arrangement gives more hill) and incorporated a Cage Hill Slalom event. Congratulations to Tim Doe and all the intrepid competitors on another great event that this year preceded the Village Feast. See next month's *Crier* for a blow by blow account from Tim.





Cambridgeshire
County Council

From our Local County Councillor David Brown

Discussions at the County Council have been dominated by announcements from Central Government about cuts in expenditure and a freeze on spending in other areas pending further work. In terms of cuts we have been told of over £5 million in the current year and the freeze includes such work areas as the A14 improvement and the hoped-for new railway station at Chesterton. We are waiting for further detailed information.

The Highways Review Group I have been asked to sit on has met on a number of occasions and has given initial consideration to highways policy in general, the review of the Winter programme and the role and remit of Area Joint Committees.

Environment and Sustainability Scrutiny Committee met to discuss work priorities for the coming year. Once again the need to consider the budget situation played a large part in discussions. I have suggested that we need to take a detailed look at some of our basic infrastructure in the County to see where there might be shortfalls in provision of water and energy services.

The Neighbourhood Panel met at Stetchworth, with presentations regarding a proposed cycleway from Lode to Waterbeach and about caring for older people.

I also attended a liaison meeting with teaching unions.

Stagecoach has indicated that it will be making some amendments to bus timetables in late July following concerns raised with them. At the time of writing I do not have the full details.

David Brown

Our Man at the Annual Village Assembly

The *Crier* Annual Village Assembly reporter, John Chalmers, was up North sorting out the BBC, so this year it's a report from a stand in.

There was a good turn out by the PC, neither the ECDC or CCC representatives attended though they did provide full written reports, as did some other organisations, with only the Scouts giving a live presentation.

Last year 17 members of the public attended. This year there were only SIX. And halfway through there were only THREE. So what went wrong this year? Lack of publicity? Lack of controversial issues? Lack of free liquor? Probably everyone has a different answer.

What good people ECDC employ. Dave White, Waste Strategy Team Leader for ECDC, gave an excellent presentation on Recycling. He started by saying that ECDC has the worst recycling record within Cambridgeshire, though this year it was the only one to have had a slight increase. Nationally recycling has gone down a bit with the recession which has resulted in fewer wine bottles and thinner newspapers. £120,000 has been saved by ending the plastic bottle collection, and because plastic is so light the extra land-fill costs are minimal.

All our glass goes to Yorkshire for aggregates or bottles, plastics go to the Far East, and newspapers for newsprint go to Kent. Health and Safety (heavens forbid) are looking at boxes and black bags and David White revealed that he is really a bin man following his previous experience and would like the change. But there can be no change until the Veolia contract is renegotiated in a few years time.

What was the reaction from the floor? Almost everyone overwhelmingly wanted to keep black bags. David Greenfield led the charge and compared his hazardous-obstacle-riddled-bin-day-life in Cambridge City with life in black bag Prior. Elisabeth Everitt challenged the need to supply free black bags at a cost of £40,000. David W said that ECDC had looked at the question and decided it was worth the money. Many in the meeting disagreed and said that people often need to buy extra black bags anyway.

David Greenfield was having a lovely time and enjoying raising all his concerns. He lamented that ECDC only provided 4 paper bags for green waste. David W said that this was standard and that ECDC had gone over the top in initially providing many more. David G thought this could lead to bonfires which he abhorred, and he was in such fine flow that no one dared say that apart from black bags in the country you also have bonfires. If lit responsibly bonfires can be one of the joys of Autumn, as the great poet said, together with cottage log fires.

The biggest problem that anyone from ECDC has in talking to us about recycling is that at some point he has to mention the recycling plant at Grunty Fen. Now no one in Prior or the surrounding villages is ever going to make the trip to Grunty Fen. This is especially so when, thanks to Suffolk CC, we have off Exning Road an absolutely outstanding recycling centre. It is kept impeccably, the staff

could not be more helpful and cheerful, and the only regret is that the new contractor has abolished the shop which really offered a great sense of community and well being.

Mr White was excellent, answered all questions honestly, and received well-deserved applause. At this point one member of the public peeled off.

Next came the excellent power point Scouts presentation, put together by Steve White, and narrated by Tim Doe. The organisation is going from strength to strength, Karen King is the new committee secretary, two thirds of the scouts are girls, and Tim Doe now has his “Wood Badge”. No-one quite knew whether this was good or bad but you can probably call on him now if you have some logs to cut.

The PC then presented its report. At this stage more members of the public had gone and we were left with Ruth Stinton, David Geenfield and the reporter. The Chairman was asked whether he would support free liquor at next year’s annual meeting. He did not reject the idea, though, when pressed, he would not say what kind of wine he will be providing.

Alastair Everitt



What's on at Anglesey Abbey?

July/August 2010

Saturday 17 July, 10.30am – 5.30pm

National Garden Scheme Day

Delve into the gardens and help the National Garden Scheme Fund. All garden admission donated – National Trust members are asked to make a donation. Take in the vibrant Herbaceous Border with a special tour at 11.45am and 1.45pm. Garden admission.

Saturday 24 July, 1 – 4pm

Cultural Olympiad Celebrations

Bring out the wild child in you as we join with East Cambridgeshire District Council to bring an afternoon of nature inspired play to the garden. Join in willow weaving, storytelling and fun play activities.

Tuesday 27 July, 10am – 4pm

Skills Day: Working with Wildflowers

Special hands-on day to discover how to create and maintain a beautiful, wildlife rich meadow. Be part of this working session and take home a seed-bale to get started in your own garden. £30 to include coffee/tea/biscuits and lunch. 10% discount on all sales in the Plant Centre on the day. Booking essential on 01223 810080

Thursday 5 August, 11am – 12noon & 2 – 3pm

Thrilling Thursdays: Pond Dipping

Be amazed by the creatures you and our gardeners find lurking in Anglesey Abbey's dew pond. £1.50 **per 30 minute session** plus garden admission. Booking essential on 01223 810080

Saturday 7 August, 6.30 – 9pm (gates open from 6pm)

Outdoor Theatre: Much Ado About Nothing

Three weddings and a funeral... The Pantaloons, a vibrant local theatre company, put a hilarious spin on Shakespeare's popular romantic comedy. Plenty of fast-paced fun for the whole family. Barbecue bites, wines, beers and soft drinks available. Picnic hampers can be pre-ordered on 01223 810092.

£12.50 adult, £7.50 child, £32.50 family, £20 family (1 adult)

Booking essential on 01223 810080

Sunday 15 August, 11.15am, 12.15pm, 2.15pm & 3.15pm

Butterfly Walks

Join our experts on a gentle walk to discover the beautiful creatures that live in the gardens. Walk lasts approx. 30 minutes. In association with the Butterfly Association, Cambridge & Essex Branch. Garden admission.

Thursday 19 August, 2.30 – 4pm



Pond Dipping in progress

Thrilling Thursday: Wild about cooking

Join our chef as he makes tasty jam tarts oozing with local jam.

£5 per child Booking essential on 01223 810080

Thursday 26 August, 10 – 11.30am

Thrilling Thursdays: Storytelling

Settling down in our country-house setting to hear a professional storyteller bring to life marvellous tales £3 per 45 minute session plus normal admission. Booking essential on 01223 810080

For details of all our events and opening times, please call in for a copy of our 2010 events leaflet or phone 01223 810080. Anglesey Abbey, Lode, Cambridge CB25 9EJ. Telephone: 01223 810080 Fax: 01223 810088 Email: angleseyabbey@nationaltrust.org.uk

www.nationaltrust.org.uk/angleseyabbey

News from Wicken Fen



Young visitors recently helped us re-instate the cottage garden of historic fen cottage. The project was part of the Trust's Food Glorious Food initiative to encourage children and their families to grow and eat their own fresh produce. The children planted a range of salad and vegetables which will be eventually be harvested and served in the Wicken Fen café.

The children were also given packets of seeds to grow at home. If anyone has a few hours to spare each week and would like to tend the garden please contact Isabel Sedgwick at the Visitor Centre on 01353 720274.

Summer has truly arrived on the fen with a fantastic display of wild flowers, particularly orchids to be seen on Sedge Fen. Senior Warden, James Selby and his team are keeping a close watch on the fen and placing informative notice boards out to help visitors identify and learn about the flowers. The Wicken Bird Ringers are delighted to have rung a nuthatch, the first time a nuthatch has been rung in over 40 years of ringing on the fen.

Construction of the Reach Lode Bridge and cycleway across Burwell Fen is progressing in preparation for an autumn opening. We are planning a community picnic and BBQ at 2pm on Sunday 12 September to mark the official opening of the bridge. Please bring a picnic and join us for the celebrations.

We have a number of activities and events in the lead up to the summer holidays. Enjoy a close encounter with the magical dragonflies of Wicken Fen on a Dragonfly Safari on Sat/Sun 3, 4, 24 or 25 July at 11am and 2.30pm; discover Wicken's amazing flora and fauna on a Summer Wildflowers and Wildlife Walk, with the Trust's Conservation Advisor, Stuart Warrington on Sun 11 July at 2pm. For children we have Wild Art on Wed 28, drop in from 11am- 3pm (allow 2 hours) or Fairies, Pixies and Trolls on Friday 30 July at 10.30am and 2.30pm. For those feeling energetic why not join a three hour paddleboard safari on Fri 30 July starting at 9am and 2pm. Information and tickets on all events and activities are available from the Visitor Centre on 01353 720274.

Strawberry Tea on the Fens

Not even the football could spoil the afternoon. It was glorious. Uninterrupted sunshine, (apart from a couple of gusts of wind to topple the umbrellas); good company; swimming for the youngsters; big screen TV for those who couldn't live without the football; excellent music from the folk group (the singer was outstanding) This event has rapidly established itself as an annual institution in the Swaffham Prior calendar. The first one was held last year and this one built on that experience.

Many thanks to Linda Evans and her family for the hospitality of their gardens, a haven from busy city life, and to the St Mary's Social Committee and its helpers for organising the event, which raised £300 for church funds.

This is what our church is about, establishing a good community, and Swaffham Prior does it so well.

Brenda Wilson



And from Dee....

Children played in the pool and Cocky Fruit-tails, Lily Cook-Noyes and David Thomas entertained us with traditional tunes – and cheered us all up when we heard the football result! Over sixty people basked in the sunshine, including some who were



just passing and stopped to see what all the fun was! Huge thanks to the Evans and Jordans for hosting the event and to all who helped prepare, serve, wash-up, fetch and carry and provide music. Particular thanks to the kind donor who paid the musicians for their performances.



More information on forthcoming events – Dog Show, Moveable Feast, Harvest Supper, etc - elsewhere in the Crier.

Dee Noyes

Chris Herring's Crime Report

This month was nearly crime free with only 4 crimes being reported.

A car was keyed in Lode which was the only reported crime for the village.

Bottisham had the other three crimes: 3 drain covers were stolen from Wilbraham Road, near the village; there was a domestic incident which resulted in a male being dealt with for criminal damage and finally there was a reported assault on a pupil at the Village College which is still being investigated.

THE SWAFFHAMS

There were 2 cars broken into at Devils Dyke car park with items stolen from one of them.

The metal fence around a memorial tree was bent at Swaffham Bulbeck and a small cannabis factory was also discovered in the village with two persons arrested with investigations still ongoing.

A robbery occurred in Swaffham Bulbeck with one person arrested and on police bail while investigations continue.

An agricultural harrow was stolen from Swaffham Prior Fen and a property under construction was also broken into with items stolen. Heating oil was stolen from another property on the Fen.

BURWELL

There was a minor assault at a party with one juvenile given a formal reprimand.

A vehicle had a wheel stolen from it whilst parked on a driveway and another vehicle had its bumper damaged while parked in the road.

A person was assaulted at the working men's club with one person arrested and investigations still ongoing.

There were two road rage incidents: one in Swaffham Road with one person arrested and charged with criminal damage and driving without due care and attention; the second was on Reach Road and is still under investigation.

A door window and light were smashed at a residential house with 2 arrests made. This was linked to an assault at the Fox public house where 2 males were assaulted. Investigations are still ongoing into both crimes.

A window was broken at the Village College with one juvenile bailed to attend the police station for questioning.

Some commercial batteries were also stolen from a business property. Thanks to neighbours who recorded the vehicle registration from the car used, an arrest was made, with a 17 yr old male being given a formal reprimand.

As you can see the crime level remains low in the area and a number of arrests have been made in relation to these crimes. This has been down to investigation by the police but also thanks to the vigilance of local people being aware of the area and recording anything out of the ordinary. Without your help some of these crimes may never have been solved so keep up the good work it is much appreciated.

I know some of you who subscribe to E-COPS and read messages from us think they are sometimes all doom and gloom so I won't harp on to much this time.

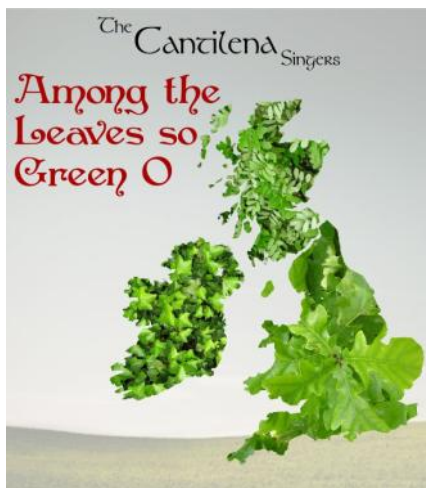
However with the hot weather far too many people are leaving their car windows open and leaving valuable items on display especially in secluded walking areas. By doing this you are likely to become a victim of crime with insurance companies unlikely to pay out if the vehicle was insecure. We are patrolling these areas every day but we need your help to make it harder for these thieves and to report any suspicious vehicles and people. You never know, your call could be the piece that completes the jigsaw to arrest these people.

Chris Herring

**Sat 24th July 2010, St Mary's
Church, Stow-cum-Quy,
7:30pm**

- The Cantilena Singers - director Daniel Spreadbury
- Out of the Attic
 - o Helen-Louise Baker - Flute
 - o Jane Ward- Accordion
 - o Sarah Petts - Bodhran

A choral concert featuring a wide range of folk songs from all corners of the British Isles. An evening featuring tales of love, loss and laughter - with the occasional drinking song thrown in for good measure!



Tickets for this concert are £7.00. Available on the door or from the shop in Quy.

Bon Mot Number 5

While the seven dwarfs were busy working in their diamond mine, Snow White prepared their lunch and took it to them. As she got near she was horrified to see there'd been a massive cave-in, and the dust was still settling.

Scrambling to get as near as she could, she shouted "It's Snow White. Can anyone hear me?"

Faintly, from far below, she heard the wavering reply "*England for the World Cup*".

"Ohhhh" she said. "Thank heaven. At least Dopey's alive".

Maggie Cotner



WI Notes

The speaker at our June Meeting was Janet Hearn from Médecins Sans Frontières who inspired us all by talking about the vital work of the organisation, its mission and its plans. We also learned of Janet's personal involvement in many emergency missions to Africa over the years and some of the terrible conditions the teams have to face. A very enlightening evening for us all.

On July 19th we will be having our summer garden party in Betty Fox's beautiful garden - we just hope the weather will be kind to us!

There is no meeting in August, instead we are going by coach to the Flower Festival at Old Hunstanton on Saturday 31st July.

New members are always welcome to our friendly group.

Pat Cook

President 01638 742224



Anglesey Group Mothers' Union

'A visit to France' was the title of our May meeting talk. Wendy Lovell kept us well entertained with her talk on a family trip to France to visit the grave of her uncle who fell in the First World War. Wendy's marvelously appealing and humorous speaking skills gave us a most pleasurable afternoon. She told us of her visit to Aubigny cemetery where her uncle is buried, and how this cemetery contains graves of various nationalities including both British and German. Wendy's visit was close to Remembrance Sunday, and she told us the moving story of how she took off the poppy she was wearing and laid it on her uncle's grave. Wendy also told us of her visit to the Canadian Memorial at Vimy Ridge and the underground tunnels, explaining how small and cramped the tunnels would have been for the soldiers. Wendy and her travelling companions were privileged to take part in a poignant remembrance service held at Thiepval Memorial, the large arched memorial in the Somme, which lists the names of 72,098 men who died and have no known grave. Amidst this very moving subject Wendy had many fascinating little tales to tell of amusing things that happened during the trip.

You are most welcome to join us at Lode Chapel on the third Thursday of the month. Our next meeting will be on 15th July – Speaker Nicky Jackson (Milton Children's Hospice).

Ann Langran

812797



VILLAGE GARDENERS

SPVG's June Outing

A convoy of cars set out (one-a very snazzzy red one), to take 21 of us to see Charles and Kate Comins lovely garden , at the Old House in Fulbourn.It was a beautiful sunny evening,but we all clutched jackets for the later evening chill.

It's impossible to go naming plants, but the tall flint wall that surrounded the garden was clad in a wonderful variety of roses and clematis;the wide herbaceous borders were a mass of flowering shrubs and summer flowers;the splendid pond was full of water lilies and backed by a pergola ,up which was climbing more clematis with huge flowers-I really should have asked the name of that one.

I think we were all full of admiration and Roger Connan thanked our hosts for a most enjoyable evening. It ended with wine and nibbles-the money for which the Comins give to Magpas and the N.G.S.(the dates for when they open to the public can be found in the yellow book)

The Gardeners are going to Coton Manor Gardens on the 10th July- any one wishing to come-please contact Roger Connan -742182 or Peter Hart-74168.

Beautiful Kittens

Free to loving responsible homes, three pretty tortoiseshell females and one sturdy little black male. Born May 15th. they'll be ready for homing (preferably in pairs) after July 10th when they'll be eight weeks old. Call Gregg or Maggie Cotner on 01638 743891.



PROPECTS TRUST HELP HEROES IN FUNDRAISER

Co-workers of the Prospects Trust raise over £150 on tombola in aid of “Help For Heroes”. On Friday 4 June 2010, a group of co-workers (people with learning difficulties, mental ill health and disabilities) ran a tombola at a Ditchburn Place’s fete.

As part of an exciting new Big Lottery Funded project “**Reaching for Better Chances**” Co-workers at **Prospects Trust** are learning to overcome specific barriers and trying new things.

Ros Puddefoot, Project Co-Ordinator and Co-Manager said “The idea for a charity fundraiser to benefit others came directly from the Co-workers themselves and the day was a huge success”.

The Co-workers worked as a team to gather the prizes, stick the tickets on the prizes, and fold the tickets. On arrival at Ditchburn Place, they set out all the prizes and put the tickets into the drum. They all loved spinning the drum. The stall had quite a lot of customers- some were lucky and won a prize and others were not so lucky but didn’t seem to mind as they said it was for a good cause.

The Prospects Trust, a social enterprise and 18 acre organic market garden, based in Reach, Cambridgeshire provides opportunities for people with learning difficulties to improve and develop their skills, so that they can lead more independent lives.

Jill Frost, Employment Co-ordinator and Co-Manager for The Trust said: “we were really happy to support our Co-workers in their ambitions to fundraise for other worthy causes. As a small charity ourselves, we know just how important donations are and how even small amounts can make a big difference to people’s lives”.

Pip, Trevor, Michael and Linda , Co-Workers at the Prospects Trust said: “It was a very hot and busy day but we are looking forward to doing it again. We would like to thank everyone who supported us and to Ditchburn Place for their help, hospitality and tasty barbeque”.

Norfolk Hospice Can you help?

The Norfolk Hospice, Tapping House is looking for individuals and local Community Groups to help their vital fundraising by organising their own events. The Hospice relies heavily on the support of its volunteer workforce to be able to continue providing care and support across Norfolk and the Fens and is hoping to get a wider variety of groups involved within the local community. Are you the person The Hospice is looking for?

Putting on an event is a great way of supporting the Hospice, involving people in your community and having fun at the same time. Events can be anything - a quiz,

barbeque, dinner-dance, auction, golf tournament, auction of promises or a sponsored challenge - the only limit is your imagination!

The Norfolk Hospice can support and promote your fundraising efforts with ideas, advice, posters, fliers and media coverage and help you maximise the potential income from your event.

If you are interested in organising an event or would like to be involved in helping someone who is, please contact Ryan Kerr, Community Fundraiser in the first instance on 01485 542891.

Bottisham Village College Community Education

Are you looking for a new class or activity for the autumn term?

Then please look out for our new Adult Education Prospectus which will be delivered to local villages during August, or visit our website

www.bottishamvc.org/commed for details.

Alternatively, come along in person to our
Community Education Open Evening

Tuesday, 14th September

7.00 – 9.00 pm

at Bottisham Village College

Notes from the Parish Council Meetings Thursday, 13th May 2010 & 10th June 2010

The first business of the evening was the election of Officers as below:

Election of Chairman & Vice-Chairman:

John Covill was unanimously elected as Chairman and Andrew Camps was unanimously elected as Vice-Chairman.

Confirmation of PC Representatives for Village Committees/Groups:

Peter Hart – Village Hall Management Committee

Steve Kent-Phillips – Sports & Recreation Committee

Eric Day, John Covill & Andrew Camps – Parochial Charities

Confirmation of RFO & PCRF:

The Clerk, Karen King - RFO (Responsible Financial Officer)

Steve Kent-Phillips - PCRF (Parish Councillor Responsible for Finance)

The 9 members of the Parish Council are:

Mr John Covill (Chairman), Mr Andrew Camps (Vice-Chairman), Mr David Almond, Mr Eric Day, Mrs Sandra Gynn, Mr Peter Hart, Mr Steve Kent-Phillips, Mr Paul Latchford and Mr Geoffrey Woollard

Public Participation: There were no matters raised for May or June meetings.

Reports:

CCC: Cllr David Brown reported at the May & June meetings.

Peter Hart thanked Cllr Brown for his help in reporting the fly-tipping behind Pulpit Corner/Mill Hill. He said this had not been moved to date but was hopeful that it would be done soon.

Geoffrey Woollard raised his concerns about the possible purchase of land at Reach by the National Trust.

ECDC: Cllr Allen Alderson reported at the June meeting.

Peter Hart informed Cllr Alderson that some of the fly tipping on Barston Drove had been collected but that there remained some further tipping located further along the Drove. Cllr Alderson was to follow up.

Correspondence Received: The Clerk reported on correspondence.

CCC

Kate Day – Springing into Action! Countryside Access and Public Rights of Way

Mark Vigor – Introduction of Electronic Consultation

Kevin Hall – Jointly Funded Minor Highways Improvements – 2011-12

ECDC

Consultation: On East Cambridgeshire Council's Decision Making Arrangements
Neighbourhood Panel – revised dates for 2011

Permanent Woodlands – *notification that the land to the rear of Pulpit Corner was not available as new woodland area.*

Notification of Chairman and Vice-Chairman of Council

Planning

Planning Permission received for 60 High Street – *remove two garden sheds and replace with two new sheds/utilities buildings under one roof.*

General

Philip Hodgson-Chair of Governors, BVC - statutory proposal for the change of status from a community to a foundation school and the acquisition of a foundation for Bottisham Village College

Trading Standards (via ECDC) – Switchover to Digital TV – help scheme

School – Newsletter

Matters Arising from Previous Minutes (for information only)

Clearing of Grips in Highway Verges: The Clerk confirmed that following a request by Cllr David Brown, Paul Butcher of CCC Highways had confirmed that grips were cleared out on a “required basis” by their Small Works Crew.

Footpath 6 (Pulpit Corner-Devils Dyke): Peter Hart told the meeting that he had met with Karen Whymark (CCC) to discuss the installation of the kissing gates and he was to liaise with contractors about the siting of the gates.

Telephone Kiosk, High Street: The Clerk had contacted BT and reminded them that as the telephone box was a listed building it was their responsibility to maintain it to a good standard. BT confirmed that they would carry out an inspection and carry out any work needed.

Consideration of Planning Applications for:

34 Lower End – erection of rear extension following demolition of existing and replace non-original windows and doors. Ref: 10/00309/FUL. No objections.

14 Mill Hill – single storey extension. Ref: 10/00227/FUL. No objections.

25 High Street – demolition of existing collapsed barn and construction of replacement in similar form. Ref: 10/00267/LBC & 10/00393/FUL: No objections.

Repairs to the Pound, Cage Hill: Details of application for Listed Building Consent were agreed and submitted to ECDC for their approval.

Request from Scouts for assistance with Tree Planting Scheme: A donation of £100 was agreed subject to confirmation of the type of trees to be planted and that the owner of the site had been informed.

Approval of Annual Return: Everyone thanked Mr Mike Malster for his help in carrying out the required Internal Audit of the accounts. These had now been submitted to Moore Stephens for their final external audit and approval.

Refurbishment of Village Seats: This work was carried out by Peter Arksey to a high standard for which the Parish Council members were very grateful. Donations towards materials were received from Steve Kent-Phillips and Geoffrey Woollard. The Parish Council's thanks were recorded.

Jointly Funded Minor Highways Improvements – 2011-12 Bidding Round: An application was to be submitted for the reinstatement of the footpath from the school down to the football ground.

Request for Handrail to Steps at The Beeches: The condition of the stepped central footpath at The Beeches was causing concern to residents. The installation of a hand rail to aid people when walking down this very steep footpath was to be followed up with Sanctuary Housing. Although there was some uncertainty as to who was responsible for this footpath the Parish Council were strongly of the view that the main priority was the safety of the residents and as such something needed to be done as a matter of urgency with the question of ownership being a secondary consideration.

Clerk's Report:

Village Car Park: 2 signs marking disabled parking bays were erected.

Installation of Dog Bins: Chased with ECDC – waiting on availability of working team to erect them.

Cemetery Water Supply: Unfortunately during the recent work by Anglian Water's contractors in laying a new pipeline on the 'top road', the water supply to the cemetery had been cut off. Anglian Water was informed and instructed their contractors to reinstate as a matter of urgency. A temporary standpipe was installed by the gate to the allotments and it was suggested at the June meeting that it would be useful if, when the connection was restored to the cemetery, the temporary standpipe could also remain. Anglian Water was to be asked if this was a possibility.

Rogers Road Footpath: Following concerns raised about the unevenness of the footpath caused by bind-weed pushing through the surface, CCC were to be contacted and asked to repair and 'level out' the footpath in order to make it safe.

Accounts for Payment: These were agreed.

Parish Councillors' Reports:

Peter Hart reported that the vegetation had not been cleared from the footpath on Lower End. The Clerk was to write to owners of Ivy Farm.

Steve Kent-Phillips reported that the Scouts had agreed to trim back the trees in

the play area and also repaint the fence around the Village Hall.

Open Question Time:

General discussion.

If anyone would like further information on any of the above items, please do not hesitate to contact the Clerk.

The next meeting will take place on Thursday, 8th July 2010 at 7.30pm in the Village Hall. All are welcome to attend.

Karen King – Clerk to the Parish Council, 742358, karen.king5@btinternet.com

Football and Faith



I hope you haven't picked up your copy of the village magazine to escape the wall-to-wall coverage of the World Cup, because, in this column at least, the football theme continues. As I noted in last month's contribution, we have been showing their matches on a big screen, providing a space for families to have fun together as we cheer on Rooney and the rest.

At the beginning of the tournament I was interviewed on the radio because there was some surprise that faith and football should mix in this way. The fact is that, just like healthcare and education, the national game has much to thank the church for. In the latter part of the 19th century, with the advent of the 5½ day week, many of the men coming out of work at lunchtime on a Saturday would spend the afternoon drinking their wages away. Christians, seeing the impact of this on families and communities, sought to respond to this problem by setting up football clubs.

These church-based teams began to flourish and in 1886, at the initiative of William McGregor of the Aston Villa Wesleyan Football Club, ten of them organised themselves into a league structure. At Swindon Town FC the local church youth worker, Harold Fleming, became a star player of this era, and went on to play for England. Fulham FC also had its origins in the church, and even the local vicar was regularly on the team sheet. Basil Wilberforce, the grandson of the great anti-slavery campaigner, was instrumental in the formation of St. Mary's Association Football Club, which later to become Southampton FC.

Football in this country has changed a lot since then with players now earning ridiculous amounts of money; but faith and football can still work hand in hand. One Christian charity, KickLondon, is taking God's love to the more deprived parts of London using football, and in many poorer countries churches continue to offer hope through the beautiful game. Indeed, many of the great players from these nations have a strong Christian faith – who can forget Kaká and his 'I Belong to Jesus' T-shirt, or the scenes at the end of the 2002 World Cup when most of the victorious Brazilian team fell to their knees and prayed as the final whistle blew.

God has given us many good things – and I believe one of them is football. It's not right to worship the game, or idolise those who play it; but there's nothing wrong in enjoying it and using it to make a difference in our world. If England come home without the cup, however, I may need to remind myself of the words of Lucio (one of those Brazilian players from 2002) who said: "We should always give Jesus the

glory – in good times and bad”.

Simon Goddard

Sundays in July

Sun 4th, 10.30am – RE:NEW The Bigger Picture

(at Bottisham Primary School with crèche and groups for children and young people)

Sun 4th, 5.30pm – ‘Sacred Space’ Contemplative Service (Chapel)

Sun 11th, 10.30am – RE:NEW Kids Club and Café (School)

Sun 18th, 10.30am – RE:NEW The Bigger Picture (School)

Sun 25th, 10.30am – RE:NEW The Bigger Picture (School)

For more information please contact: Rev. Simon Goddard.

Tel: (01223) 812881

Email: simon.goddard@re-new.me.uk

Roman Catholic Church, Newmarket Parish

Masses: Newmarket: Sat 1830; Sun 1030;

Kirtling: Sun 0900;

In Bottisham Parish Church, Sun 0900 (Served from Cambridge).

FREECYCLE



If you have any offers or wants, please contact me on jun.thompson@tiscali.co.uk, phone on 01223 813362, or drop a note through 23 Longmeadow. Everything is free and nothing is expected in return.

If you have any offers or wants, please contact me by the 14th of each month on jun.thompson@tiscali.co.uk, phone on 01223 813362, or drop a note through 23 Longmeadow. Everything is free and nothing is expected in return. Should you be unsuccessful, please try your offers/wants on <http://freebiefreakz.org> or <http://groups.yahoo.com/group/cambridgefreecycle/>

Offers

Very comfortable three-seater green leather sofa on wheels. Seat cushions somewhat damaged, so re-upholstered with fabric. Nicole 812363

2 Bokashi composting bins (bran not included). See Greengardener.co.uk, or ring me for more information Stephanie, tel 01638 743036 / 07894 819345

Wanted

Your old light fittings, brown bakelite switches, iron conduit and switches, bulb holders and holders. Sheets and bits of bakelite. Postcard rack (carousel if possible).

Dear Friends,

There was an officer in the navy who had always dreamed of commanding a battleship. He finally achieved that dream and was given commission of the newest and proudest ship in the fleet. One stormy night, as the ship ploughed through the seas, the captain was on duty on the bridge when off to the port he spotted a strange light rapidly closing with his own vessel. Immediately he ordered the signalman to flash the message to the unidentified craft, "Alter your course ten degrees to the south." Only a moment had passed before the reply came: "Alter your course ten degrees to the north." Determined that his ship would take a backseat to no other, the captain snapped out the order to be sent: "Alter your course ten degrees--I am the CAPTAIN!" The response beamed back, "Alter your course ten degrees--I am Seaman Third Class Jones." Now infuriated, the captain grabbed the signal light with his own hands and fired off: "Alter your course, I am a battleship." The reply came back. "Alter your course, I am a lighthouse."



Just like that officer we often like to think we are completely in charge of our own lives, yet trouble can so easily be lurking ready to pounce on us and to throw us off course.

We have seen just recently how the terrible rampage of Derrick Bird can have terrible consequences upon the lives of ordinary people going about their daily lives without any thought of the danger just about to descend upon them.

The question that many would have asked at that moment was "Where is God? Why didn't he intervene and stop the carnage?" Well, the answer must surely be that God was there, and despite our despair at His seeming inability to do anything about evil, we must take heed of what the great preacher and theologian A W Tozer once wrote:

'The whole history of the world is discovered to be but a contest between the wisdom of God and the cunning of Satan and fallen men. The outcome of the contest is not in doubt.'

The great John Wesley put it another way: 'Only when God hath brought to light all the hidden things of darkness, whosoever were the actors therein, will it be seen that wise and good were all his ways, that he saw through the thick cloud, and governed all things by the wise counsels of his own will, that nothing was left to chance, or the caprice of men, but God disposed all strongly and sweetly, and wrought all into one connected chain of justice, mercy, and truth.'

John Wesley's point is that God wants the very best for our lives. He loves us more than we will ever fully appreciate or understand. Each one of us are precious to him, therefore we have got to try to learn to trust him with every aspect of our lives, even when things seem very difficult or even tragic. We are not his robots, in fact our freedom is precious to him, but that means he has given us freedom to make mistakes in our lives and to experience trouble and difficulties. He knows the pains and suffering that we experience and he wants to be with us, to share those

difficulties with us, and to bring us comfort, strength and hope.

Jesus Christ said “Are not five sparrows sold for two pennies. Yet not one of them is forgotten by God. Indeed the very hairs on your head are all numbered. Don’t be afraid you are worth more than many sparrows.” Luke 12:6/7

May God bless you all,

David

**Watch The World Cup at
Bottisham Church.**

All screens wide and digital
All scenes near and yon
All screens bright and wonderful
Seen by each and every one.

Each little foul that happens;
Each penalty that’s seen.
TV in glowing colours,
Repeats it on full screen.

The tousle headed striker
Dribbling swiftly by
The goal fluffed and the sequel -
The trainer’s deep and heartfelt cry.

We see the Church doors open wide
To an alternative religion
Is this a one-time happening
Or a poor prelate’s pet pigeon?

All this is fine and wonderful
But can we also see
The racing cars at Silverstone
During this year’s British Grand Prix?

And we must not forget the tennis
At Wimbledon this year;
Nor Snooker in the Autumn
That many folk hold dear.

	ST MARY’S Swaffham Prior July 2010
Sun 4	11:00am Matins
Sun 11	11:00am Holy Communion
Sun 18	11:00am Family Service
Sun 25	10:00am Benefice Communion (Quy)

Ophir

Dates for Your Diary July 2010

Sat	10	Fountain Group Art, 11-6pm, St Cyriacs Open Studios, 24 Lower End & Mill House Village Gardeners Coton Gardens Visit
Sun	11	Fountain Group Art, 11-6pm, St Cyriacs Open Studios, 24 Lower End & Mill House
Thu	15	Mothers' Union, Lode Chapel
Sat	17	Fountain Group Art, 11-6pm, St Cyriacs Open Studios, 24 Lower End & Mill House
Sun	18	Fountain Group Art, 11-6pm, St Cyriacs Open Studios, 24 Lower End & Mill House Crier Copy Deadline
Mon	19	WI Summer Garden Party
Tue	20	Mobile Library, Cage Hill 3:15-3:50pm Chapel 3:55-4:15
Sat	24	Cantilena Singers, St Mary's Chruuch, Quay, 7.30pm

Club	Contact	Tel.	Date	Time	Place
FOSPS	Clare Freeman	741316	2 nd Mon of Term	8pm	Village School
Baby & Toddlers	Jessica Shakeshaft	744266	Fri	9:30-11:30am	Village Hall
Jamsing	Jo Pumfrey	741376	Tues (term)	9.20-12	Village Hall
Cubs	Tim Doe	743656	Weds (term)	6:00-7:30pm	Village School
Reading Group	Brenda Wilson	743937	1 st Weds of month	8:00pm	(See Crier)
Scouts	Tim Doe	743656	Weds (term)	6:15-7:45pm	Village School
Village Gardeners	Margaret Joyce	744390	3 rd Tues of month	8:00pm	Village Hall
WI	Pat Cook	742224	3 rd Mon of month	7.30 pm	Village Hall
Youth Club	Alan Badcock	742228	Tues	7-8:30pm	Youth Club Hut
			Thurs	7-10:00pm	

**Village
Clubs
&
Societies**